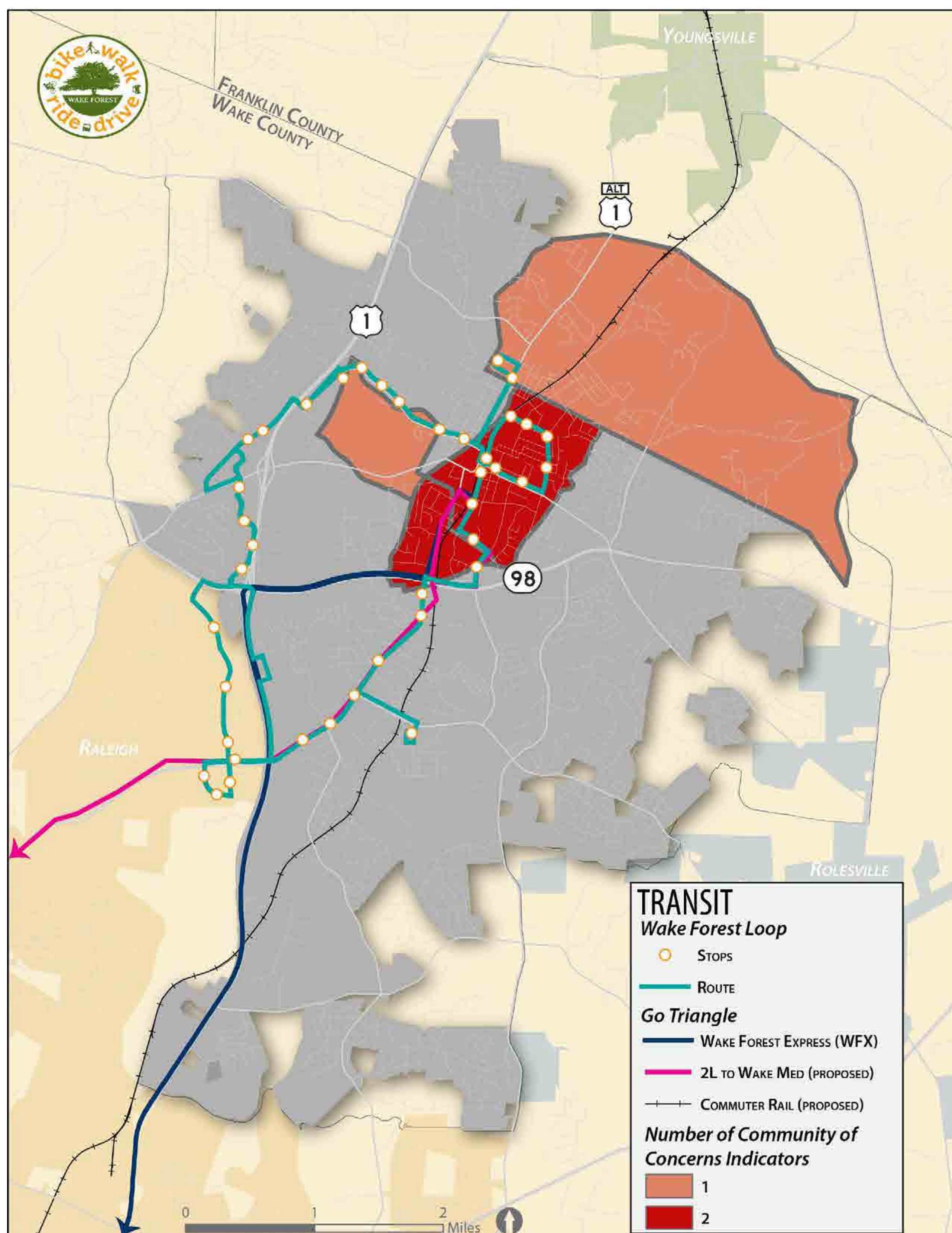




Transit | Commuter Rail, Bus Loop and Underserved communities



Existing Conditions

- The adjoining map shows the existing **Wake Forest Loop** bus route superimposed on a map indicating the existence of Communities of Concern.
- Communities of Concern include underserved sections of the community including older adults, low income households, minority households, households without adequate number of cars etc.
- Communities of concern have a higher propensity to use public transportation.
- Town of Wake Forest is planning to implement a **reverse loop** bus service to complement the existing loop route.

Recommendations

Bus

- The reverse loop bus route should be extended to serve the communities of concern.
- On-Demand service to and from nearby towns of Youngsville and Rolesville need to be studied.

Rail

- Commuter rail service between Raleigh and Wake Forest is in the early stages of planning.
- Two stations are proposed within Wake Forest as shown in the map below.
 - Downtown station - Near S White Ave close to E Jones Ave
 - NC-98 Station - Intersection of NC-98 and S Main St
- NC-98 Station has a higher probability to be planned as a Park and Ride Station. The streets and neighborhood around this station should be planned accordingly.

