

Workshop Summary Sussex County Discovery Workshop Sussex County Vocational School, Sparta NJ Monday, May 13, 2013

BACKGROUND

During the months of February through May 2013, **Together North Jersey (TNJ)** and the **North Jersey Transportation Planning Authority (NJTPA)** jointly convened a series of 14 public outreach workshops. The purpose of the workshops was to gather input from local officials, residents and businesses about what it is like to live, work, and get around northern New Jersey and how we can work together to ensure a prosperous future for the northern part of the state. The workshops were convened in support of two concurrent planning processes that are described in more detail below.

About Together North Jersey

Together North Jersey is a voluntary partnership of jurisdictions, organizations, businesses, educational institutions, and agencies in the 13-county NJTPA planning region (See Figure 1) that have agreed to work together to develop a long-range action plan to address the challenges facing the region. In November 2011, the U.S. Department of Housing and Urban Development awarded **Together North**

Jersey a \$5 million Sustainable Communities Regional Planning Grant. The grant is matched with an additional \$5 million in leveraged funds from project partners. Grant funds will be used to: 1) develop a Regional Plan for Sustainable Development (RPSD) for the 13-county planning region; 2) implement up to 18 local demonstration projects; and 3) provide technical assistance and offer capacity-building opportunities that include: a program of educational conference, workshops and webinars as well as to two capacity-building grant programs – one for counties and cities participating on the steering committee and a second for non-governmental organizations (NGOs) to become involved in the regional planning process.

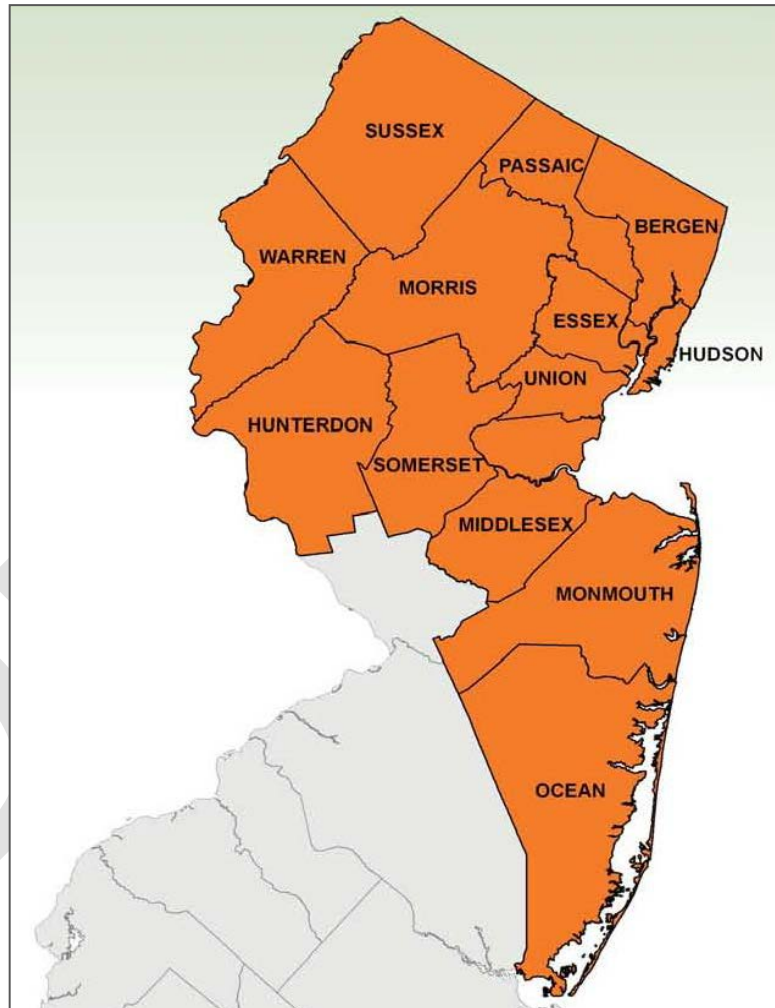


Figure 1: The NJTPA and Together North Jersey Planning Region



The Together North Jersey RPSD Planning Process

The **Together North Jersey** RPSD planning process will engage officials at multiple levels of government, businesses, non-governmental organizations, other stakeholders and the general public in a strategic planning process designed to address the challenges facing the region. The planning process is divided into three phases designed to explore existing conditions and trends, consider different scenarios for future growth and development, and develop a detailed action plan for achieving the region’s vision and goals (See Figure 2).



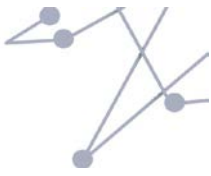
Figure 2: Together North Jersey RPSD Planning Process

About the NJTPA

The NJTPA is the federally authorized Metropolitan Planning Organization (MPO) for 6.6 million people in the 13-county northern New Jersey region. Each year, the NJTPA oversees more than \$2 billion in transportation improvement projects and provides a forum for interagency cooperation and public input into funding decisions. It also sponsors and conducts studies, assists county planning agencies, and monitors compliance with national air quality goals.

NJTPA’s Regional Transportation Plan

NJTPA’s current Regional Transportation Plan (RTP), **Plan 2035**, was adopted in 2009. Under federal law, MPOs like the NJTPA are required to update their long range plans every four years as a condition for the receipt of federal transportation funding. NJTPA is currently in the process of updating **Plan 2035**. The updated plan (**Plan 2040**) is scheduled for adoption by fall 2013. It will lay out the vision for development of the transportation system through 2040 and serve as a transportation investment guide for the region. Preparation of **Plan 2040** is being closely coordinated with the Together North Jersey RPSD planning process.



“DISCOVERY” WORKSHOP PURPOSE, OBJECTIVES AND AGENDA

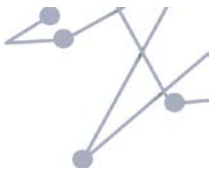
As stated above, the purpose of the Discovery workshops was to gather input from local officials, residents and businesses about what it is like to live, work and get around northern New Jersey and how we can work together to ensure prosperous future for the northern part of the state. The more specific objectives of the workshops were to:

1. Introduce Together North Jersey to local government (county and municipal) officials, stakeholders and the general public throughout the region.
2. Provide meeting participants with information about the RPSD and RTP planning processes.
3. Provide meeting participants with information about current conditions and trends related to the topic areas to be addressed in the planning process.
4. Solicit and obtain input related to the following:
 - What do people like most about their communities/region?
 - What might people like to change if they could?
 - What aspects of personal growth and well-being, family, community, nature, education, safety and security are most important to people in the region?
 - Which community planning goals and objectives are most important?
 - What are the region’s biggest strengths?
 - What are the biggest challenges facing the region?
 - What transportation challenges and priorities are most important?
 - How should we prioritize transportation investments?

The following brief agenda outlines how the workshops were organized and conducted:

- I. Self-Discovery Open House**
 - a. Sign-in and Refreshments
 - b. Where are you from? Where do you work? Map
 - c. Engage North Jersey website demonstrations
- II. Welcoming Remarks**
 - a. Local elected official
- III. Agenda Overview and Ground Rules**
- IV. Introducing Together North Jersey Presentation**
- V. “Listen & Learn” Activity Stations**
 - a. Together North Jersey Q&A (optional)
 - b. NJTPA Regional Transportation Plan
 - c. Live
 - d. Work
 - e. Getting Around
- VI. What’s Important to You Polling Exercise**
- VII. Wrap Up, Report Back and Closing Remarks**

The sections that follow summarize the input received at the workshop.



OVERVIEW

The meeting hosted jointly by Together North Jersey (TNJ) and the North Jersey Transportation Planning Authority (NJTPA) scheduled for approximately two-and-a-half hours began at 7:00 PM with participants arriving to explore the Open House portion of the workshop. A total of 69 participants attended the meeting, which included a program of the following:

1. Welcoming remarks given by Sussex County Planning Director, Eric Snyder;
2. Overviews of the Together North Jersey (TNJ) effort and the NJTPA's Regional Transportation Plan update were presented by Jon Carnegie, Project Director of TNJ and Executive Director of the Alan M. Voorhees Transportation Center at the Bloustein School of Planning and Public Policy, Rutgers University, in plenary;
3. Break-out sessions, rotating through five stations (LIVE, WORK, GETTING AROUND, Together North Jersey and NJTPA/RTP) led by two facilitators from the TNJ project team per station, at the stations participants prioritized goals/objectives and provided input on investment;
4. A regrouped plenary with an interactive polling exercise focusing on important challenges and opportunities facing the region,
5. A wrap-up/report out, given by Jon Carnegie and the station facilitators.

OPEN HOUSE

Self-Discovery

As attendees arrived at the workshop, they were asked to sign-in to receive notification of follow-up events. Attendees were also given a program folder, which contained a workshop agenda, copies of all of the presentations, TNJ and NJTPA publications, a passbook to record stamps denoting visits to each of the stations in order to encourage participation, and a comment form. Until approximately 7:30 PM, at their leisure, participants had the option of enjoying a light meal provided by TNJ, visiting the various stations, and/or becoming acquainted with the "EngageNorthJersey.com" site that replicated most of the in-person activities online.

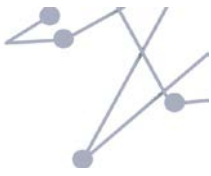
Map Exercise: "Where are you from?"

After receiving their program folders, attendees were asked to place dots on a map indicating where they lived and where they worked in Sussex County and surrounding area. To view the map, see **Appendix A**.

WORKSHOP INTRODUCTION

Welcoming Remarks

An elected official or director of planning of the host jurisdiction of the workshop is invited to provide welcoming remarks. The remarks usually include connection between the Together North Jersey effort and/or the NJTPA work and initiatives of the host jurisdiction. In this workshop, Sussex County Planning Director Eric Snyder's remarks focused on the Sussex County Complete Streets study. Snyder said this project will look at how the county can make its roads safe and accessible for all users, including bicyclists and pedestrians. He said the county will develop appropriate strategies for the largely rural county with the understanding that a "one size fits all" approach simply won't be effective. Also, Snyder pointed out, through Together North Jersey, the county will conduct a "Countywide Market



Analysis, Characterization and Future Growth Analysis.” He said this effort will take a detailed look at the dynamics of the county’s economy, including future development opportunities related to transportation and rail- trail network potential.

Introducing Together North Jersey Presentation

Together North Jersey Project Director, Jon Carnegie, provided an overview presentation on Together North Jersey that included the following information:

- **What is Together North Jersey?** – Together North Jersey is a voluntary partnership of cities, towns, counties, agencies, non-profit organizations and others in northern New Jersey that have agreed to work together with the public to plan for the region’s future. Together North Jersey is funded by a Sustainable Communities Regional Planning Grant from United States Department of Housing and Urban Development (HUD).
- **Why Together North Jersey?** – Together North Jersey was created to provide a way for local officials, businesses, state and regional agencies, non-profit organizations, other stakeholders and the public to work together to develop a regional action plan to address the many challenges facing the region. These challenges include:
 - Declining prosperity
 - Stagnant/uneven job growth
 - High unemployment
 - Increasing debt delinquencies
 - Declining home values & ownership rates
 - High cost of living
 - Housing affordability
 - Transportation costs
 - Fiscal uncertainty
 - High property taxes
 - Government debt burden
 - Looming service cuts
 - Unfunded maintenance
 - Underperforming Cities
 - Concentration of poverty
 - Public safety issues
 - School quality
 - Long commutes & traffic congestion
 - Environmental & public health concerns
 - Increase in chronic disease
 - Air & water pollution
 - Recovering from recent disasters
 - Changing demographics
 - Shifting real estate market demand



- **What will Together North Jersey do?** – Together North Jersey will: 1) undertake an extensive outreach process to figure out what we can do together to address regional challenges; 2) implement up to 40 local planning projects to address local priorities and inform the regional plan; and 3) provide technical assistance and training
- **Public and Stakeholder Engagement** – The purpose of Together North Jersey’s public and stakeholder engagement activities is to listen and learn from local officials, residents, business owners and other stakeholders from around the region. Activities will include: interviews and small group meetings; three Together North Jersey Standing Committees that will meet 3-6 times per year; up to 50 public workshops and meetings over 18 months, and the Engage North Jersey website which will collect input from people on-line. The planning process will include three phases that seek to answer the following three questions: Where are we now and where are we heading? Where do we want to go? and, How do we get there?

LISTEN & LEARN ACTIVITY

During the Listen & Learn Activity there were five stations (NJTPA/RTP, LIVE, WORK, GETTING AROUND and TNJ) to rotate through.

- At the **NJTPA/RTP Station**, participants were asked “How do you want to INVEST?” in terms of transportation funding. This was done by dropping investment beads into jars correlated with particular capital investment categories (i.e. transit expansion, bike/ped, etc.)
- While rotating through the three **Topical Stations (LIVE, WORK, GETTING AROUND)**, participants shared ideas about “What you LIKE or would CHANGE about your community?” Then prioritized goals and objectives through a “Dotmocracy” exercise.
- At the **TNJ Station**, regional coordination goals were discussed and prioritized.



NJTPA/Regional Transportation Plan (RTP) Station: Transportation Investment

At this station, participants heard from NJTPA staff about the current Regional Transportation Plan update, as well as a presentation of the demographic trends by Zenobia Fields of NJTPA.

Current Federal transportation investments are represented by percent in pie chart Figure 3-A. Participants at the workshop were asked to select three top priorities within the current investment categories. A total of 43 people participated in the RTP exercise. Their desired investments are displayed in the pie chart Figure 3-B.

Figure 3-A: Current Federal Transportation Investments

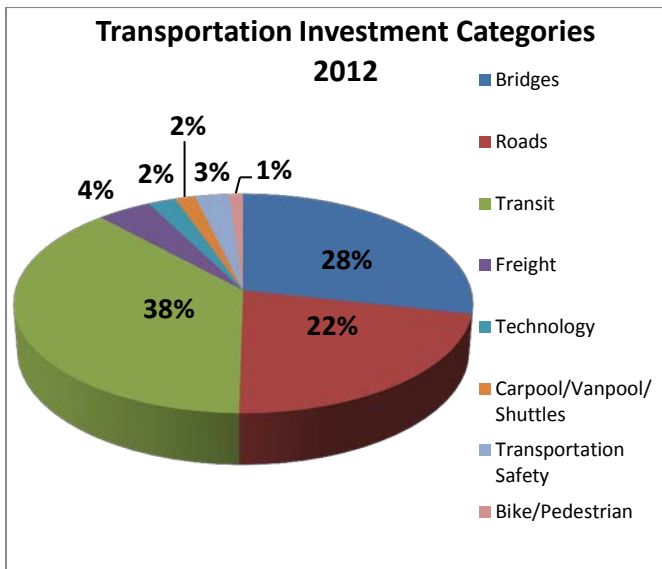
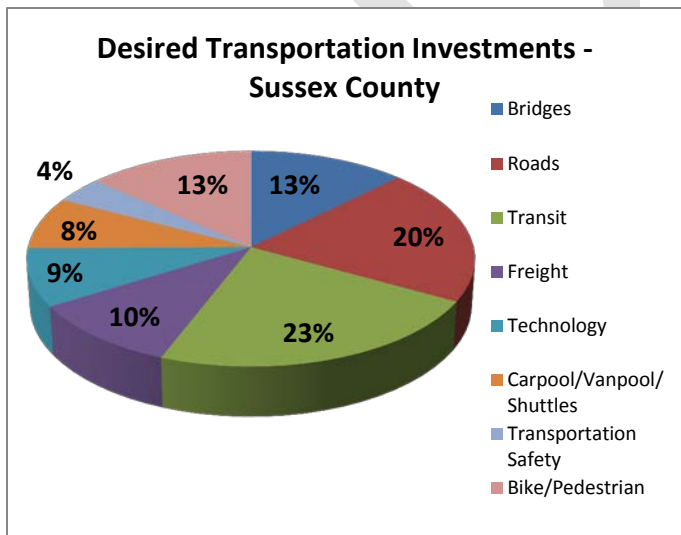


Figure 3-B: Desired Transportation Investments





Topical Station: Summary of Public Input

At the LIVE, WORK and GETTING AROUND station rotations, participants were asked two questions: “What do you like about where you live/work/or about how you get around your community?” And, “What would you like to change about where you live/work/or about how you get around your community?” Participants were asked to share the answers to these questions with someone sitting next to them. Answers were recorded on post-it notes.

At the three stations, after participants shared their “like” and “change,” several attendees reported aloud the responses they heard and discussed. The post-it notes were collected and each response was recorded. Below is a summary of the top ideas that emerged. (See **Appendix B** for a complete list of participants’ answers.)

In the **LIVE** Station, open space, quiet and other aspects of the rural character in Sussex County was the overwhelmingly reported ‘like’ in the LIVE station. It was also noted that there is low crime, quality schools, and an appreciation of local government control, with an emphasis on wanting less government in the local planning process. Common “Like” statements included:

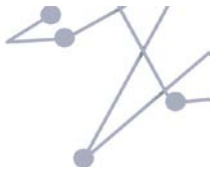
- Clean, quiet, friendly, open space
- Rural environment, low crime, not congested, no traffic
- Good schools
- Beautiful scenery

In the **WORK** Station, many participants noted that they enjoy working at home or their short commute to work. They also appreciate that they can own a business, have opportunities and access to jobs. Many also stated that they like their job or the work environment. Common “Like” statements included:

- Professional, meaningful, local and global
- Working in my house; no commute
- Entrepreneurship – resources to support tech for people that want to start new jobs
- Cheaper to do business in Sussex County; small business-friendly

In the **GETTING AROUND** Station, participants shared that they like the roads in Sussex County - access, character and maintenance. They also like the ability to walk and bike in their communities and enjoy relatively light traffic in the county. Common “Like” statements included:

- Nothing! Roads are jammed, construction, trains take too long – cost and traffic
- Being able to drive around the county during non-rush hour
- Preservation of small county roads wherever possible – and of historic landscape
- Excellent roads and maintenance; walking paths, bike trails, horse riding trails, etc.; low/no traffic; rural



In the **LIVE** Station, participants noted that they would like to change taxes - either reduce or keep them in the county. They also want to see less government and government regulation. Closely following was the desire to see more public transportation and alternatives to driving. Common “Change” statements included:

- Less regulation from state and county government
- More upscale food stores; more diverse restaurants
- Change nothing; perfect as it is
- Public transportation; more housing rentals

In the **WORK** Station, participants shared that they would like to see more jobs and opportunity within the county with higher pay, lower taxes, more transportation options or work that's closer to home, and less government interference in order to allow more business success. Common “Change” statements included:

- Low pay scale; no mix of potential jobs
- Tax burden on small businesses
- Need to attract more business and industry; need to create jobs to decrease out of county commute
- Lower taxes; want more businesses to move to Sussex County

In the **GETTING AROUND** Station, many participants shared that they would like to see more public transportation, whether within their communities or for traveling outside their community. Others want to change the level of government involvement, to leave Sussex County the way it is, and to lower taxes. Common “Change” statements included:

- Need more public transit
- Have a variety of transportation options to choose from (restrict bus)
- Tolls on public highways excessive
- Don't change Sussex County; I live here because I don't want the city life!

Priority Objectives

At the LIVE, WORK and GETTING AROUND stations, participants were asked to review the draft Goals and Objectives for the Regional Plan for Sustainable Development. After reviewing these, participants were asked to identify any missing objectives by writing them on a post-it and adding them to the listed objectives. A list of the missing objectives that participants identified is cataloged in **Appendix C**.

Next, participants were asked to rank the objectives within the goals, including any added objectives from the attendees. Each participant was able to vote for a total of three objectives, prioritizing them as “Most Important,” “Very Important,” and “Important.” The votes were weighted according to priority, and a point system tracked the prioritized objectives accordingly. **Table - 1** displays the Goals and Objectives with the station totals and overall totals. For a complete list of the responses, see **Appendix D**.



Table-1: Priority Goals and Objectives Summary – Sussex County*

Goals and Objectives	LIVE Points	WORK Points	GETTING AROUND Points	Overall Points
Goal 1 - Strengthen the region's economy	0	0	0	0
Keep & create well-paying jobs	14	39	13	66
Ensure infrastructure (transportation, utilities & communications) is in good repair & can support economic development	18	40	13	71
Increase the economy's ability to adapt to change	0	4	6	10
Increase regional self-sufficiency	8	3	1	12
Goal 2 - Ensure communities are safe, healthy & great places to live	0	0	0	0
Create safe, stable neighborhoods with high-quality housing	8	2	4	14
Improve public health	4	8	3	15
Improve access to local parks & recreation	0	2	0	2
Improve access to community resources such as libraries, senior centers, youth activities	7	5	7	19
Preserve & enhance the character of existing downtowns & neighborhoods	4	4	14	22
Improve access to arts & cultural resources	2	4	2	8
Goal 3 - Improve everyone's access to opportunity	0	0	0	0
Connect where people live with where they need to go	13	7	7	27
Maintain & improve the quality of schools	11	9	6	26
Create inclusive, mixed-income neighborhoods	0	4	4	8
Reduce combined transportation & housing costs	1	5	0	6
Goal 4 - Enhance efficiency & conserve land	0	0	0	0
Increase investment near existing housing, jobs & transportation	8	0	0	8
Maintain & expand vibrant downtowns & "main streets"	8	2	9	19
Encourage development of compact neighborhoods with a mix of housing, shopping & services	4	7	3	14
Goal 5 - Protect & enhance environment	0	0	0	0
Preserve open space & natural areas	33	9	44	86
Improve air quality	3	0	1	4
Reduce potential impacts of climate change	3	7	6	16
Increase ability to respond to and recover from extreme weather events	3	0	1	4
Ensure adequate water supply	24	5	18	47
Improve water quality	1	1	0	2
Direct development away from environmentally sensitive areas	9	1	4	14
Preserve wildlife habitat	5	3	2	10
OTHER - Objectives added by participants				
Reduce government	57	82	0	139
Attracting new businesses	0	15	0	15
Lower taxes	0	25	0	
Property tax burden. Individual property rights as an utmost importance. Retention of local control so that individual towns/cities can withdraw and so that the persons making the decisions are elected by the people.	0	0	50	75
Access to public transit	0	0	24	24
Transportation alternatives to driving alone	0	0	15	15

#'s = Indicates top five Objectives selected by participants.

*See Appendix D for missing Objectives that received points.



At the **LIVE** Station, the objective added by participants, “Reduce government” was a top priority (receiving 57 points). The second objective ranked was “Preserve open space and natural areas” (with 33 points). The third objective was: “Ensure adequate water supply” (receiving 24 points).

At the **WORK** Station, the top objective again went to the added objective, “Reduce the size of government” (receiving 82 points). The second objective ranked was “Ensure infrastructure (transportation, utilities and communications) is in good repair and can support economic development” (with 40 points). The third objective was: “Keep and create well-paying jobs” (receiving 39 points).

At the **GETTING AROUND** Station, another added objective was the top priority: “Property tax burden. Individual property rights as an utmost importance. Retention of local control so that individual towns/cities can withdraw and so that the persons making the decisions are elected by the people” (receiving 50 points), followed by a second priority of “Preserve open space and natural areas” (receiving 44 points) and a third priority, “Access to public transit” (receiving 24 points).

TNJ Station: Regional Coordination

At the Together North Jersey Station, 50 attendees participated in a “Dotmocracy” exercise to identify a top regional objective. The Objective with the majority of votes was “Respect property rights during planning and implementation”. For a list of all the regional objectives and results, see **Appendix E**. Participants were also asked if they had any questions or comments about Together North Jersey, which were recorded at the station. A list of the questions and comments suggested by the public can be found in **Appendix F**.

INTERACTIVE POLLING EXERCISE

“Tell us what is important to you.”

Jon Carnegie led the participants in an interactive polling exercise. Each participant held a remote voting pad and was able to register their votes anonymously. A variety of multiple choice polling questions asked participants to consider what aspects of living in their community and the region they found most important. The top answers can be found in Table-2. For a complete listing of the results, as well as additional questions relating to participant demographics, see **Appendix G**.

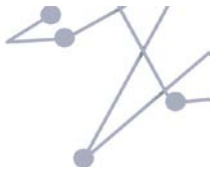


Table-2: Interactive Polling Top Answers

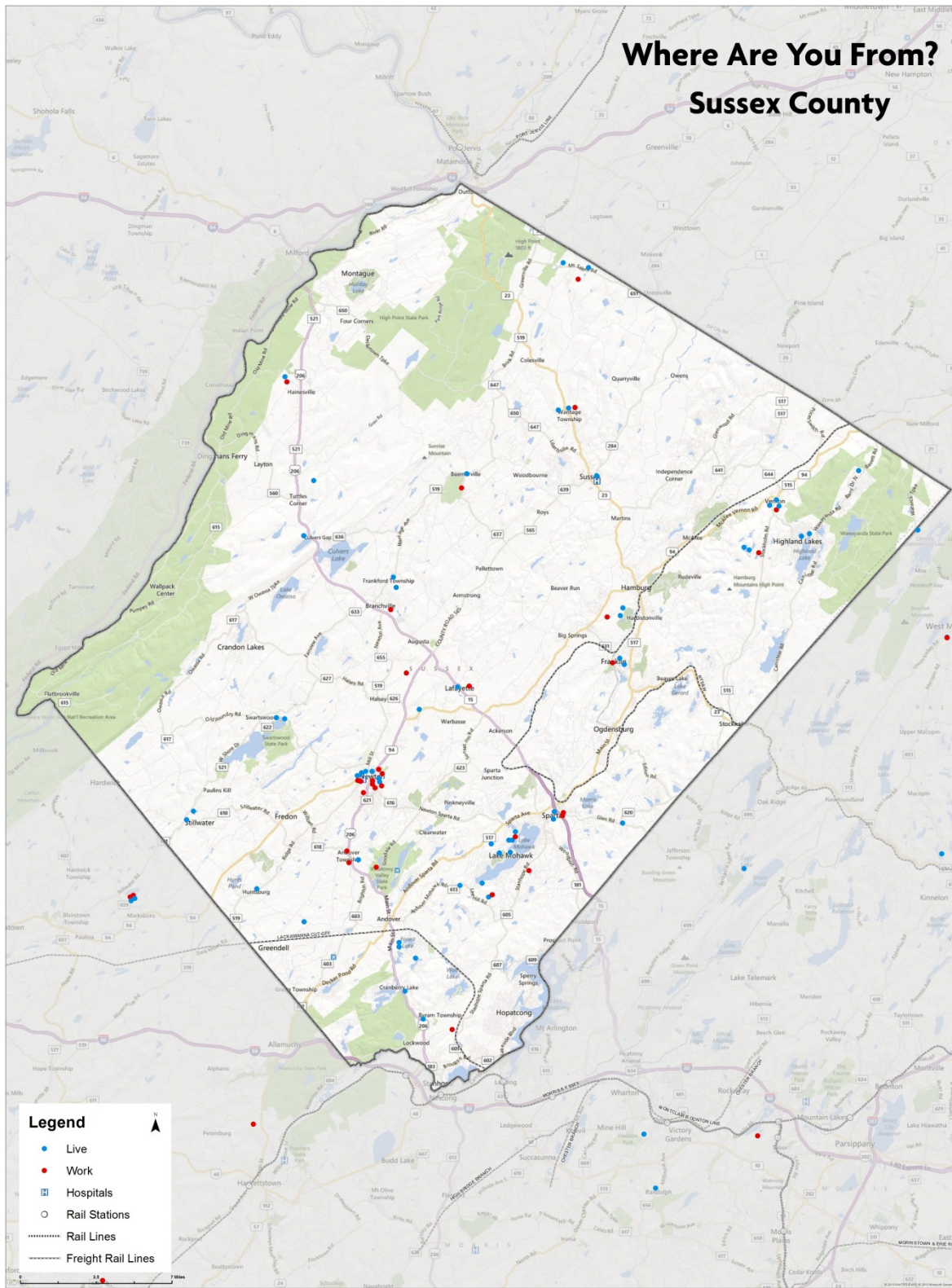
Question	Top Answer	Percent
What aspect of Personal Growth and Well-being is most important to you?	Being healthy and taking care of yourself	32%
What aspect of Family is most important to you?	Having time to spend together	41%
What aspect of Community is most important to you?	Being self-reliant and left alone	28%
What aspect of Education is most important to you?	Having opportunities to keep learning all through life	39%
What aspect of Nature is most important to you?	No choices selected	39%
What aspect of Safety and Security is most important to you?	No choices selected	34%
How should the region spend transportation dollars? (Participants were asked to select 3)	Expanding transit service	20%
	Fixing unsafe bridges	16%
	Making existing highways work better	13%
What sources of funds should be used to support transportation?	No choices selected	42%

WRAP UP, REPORT BACK & CLOSING REMARKS

The meeting concluded with a wrap-up given by Jon Carnegie and a report back from each of the station facilitators. Participants were encouraged to continue contributing to the regional discussion by visiting the “EngageNorthJersey.com” website.



Appendix A: Map

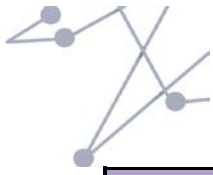




Appendix B: Summary of Public Input – LIVE*

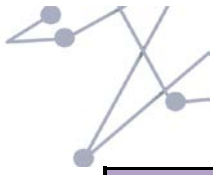
What I <u>like</u> about my community from the LIVE perspective...	
1	No change. Leave property and towns alone. More transport before jobs is nonsensical.
2	Clean. Quiet. Friendly. Open space.
3	Stars at night.
4	Open space and quiet. The stars. No people. Everything.
5	Open space.
6	Sussex County can be quiet, peaceful.
7	Hearing owls at night.
8	Quiet at night. No car horns, radios, lack of people.
9	Rural area. Open space. Good schools.
10	Republican/conservative. Rural environment. Low crime. Not congested. No traffic.
11	Everything.
12	Low crime rates.
13	Good schools. Thor labs. Rural setting.
14	Thor labs.
15	Great lake community. Safety and security.
16	Libraries, but they are underfunded (especially Sparta library).
17	I like the fact that democrats are in the minority here!
18	Access to open space, reduced crime, safe neighborhoods.
19	Like rural character.
20	Access to everything: scenery, farms, ski, water and shopping.
21	Balance of rural and populated; safe; conservative population.
22	I like the rural character of the county.

What I would <u>change</u> about my community from the LIVE perspective...	
1	State government cutting into our business.
2	Reduce taxes.
3	More jobs/opportunity.
4	Less taxes going outside local control. Less government regulation and intrusion. Less social introduction in government schools. School vouchers are good.
5	Less government.
6	Less regulation from state and county government.
7	Nothing. Leave us <u>alone</u> .
8	More upscale food stores. More diverse restaurants.
9	More change. Less government. Less regulation. Less social indoctrination in schools.
10	I would like to create an infrastructure that creates decent living wages.
11	Separation.
12	We need to create more activities for our youth to keep them from getting into criminal activities and to make them happy in their community.
13	Nothing...except keeping our tax money here.
14	Taxes. Redundancy in politics. Not inviting visiting "changers" who have no need to be here.
15	Lower taxes. Public transportation. Better communication. Better working relationship between towns.
16	Keep tax money local.
17	Get rid of Abbott districts. Let us keep our tax dollars.
18	Better water management. Put power lines underground. Better electrical grid.
19	Keep tax money in Sussex County.
20	Keep traffic contained on main roads. Don't let towns, back streets, become a "bypass" for 206, 23, 94.
21	<u>Stop Abbott funding.</u>
22	State government interference.



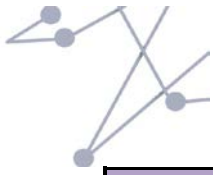
What I <u>like</u> about my community from the LIVE perspective...	
23	Open space. Quiet neighborhood. People who think as I do about freedom and limited government. Outdoor activities.
24	Beautiful scenery. Low crime. Good school systems. Nice sense of community in Sparta.
25	Open space. Safe community. The people. The beauty. Animals, birds, deer.
26	Quiet. Sleep with windows open.
27	Beautiful scenery. Wildlife. Low crime. Good school systems. Sense of community.
28	Open farmland. Safe community. Small towns. Local fuel and "family" fueling.
29	We can go out at night, take a walk. We don't need central planning. Fix the roads.
30	Access to open space and recreation. Scenic.
31	Excellent schools. Farmland. Safe communities. Open spaces. Knowing our neighbors. <u>Very</u> few democrats - even fewer liberals.
32	No government (Federal) interference in local planning.
33	Open spaces. Good schools. Great place to raise kids.
34	The freedom from restrictions and the wonderful open space of the natural setting.
35	Clean air and water. Environment: lots of green, animals. Space.
36	I love the beauty of the countryside, farmland. Houses not on top of each other. Peaceful and quiet away from city.
37	Rural character, low population density, forested landscape, great cycling on county roads.
38	Recreation very good. Great school. Great health services. Open space.

What I would <u>change</u> about my community from the LIVE perspective...	
23	Keep tax dollars in county. Return our school system to a county control.
24	Spend Sussex taxes equally throughout the county.
25	Keep planning on local level. Keep Together North Jersey out of Sussex County.
26	Limit outsiders from influencing our communities.
27	I would change nothing - it's perfect as it is.
28	Too much taxes. Too much government regulation. Lack of good technical college.
29	Taxes too high, need reduced. Over regulation. Building codes too onerous and Draconian. Lack of citizen approval for public land usage.
30	Improve and interconnect trail system. Rail. Range of housing.
31	Public transportation. More housing rentals.
32	Improve trails to alternative transportation. Active commuter rail service. Alternative house options (mid-range is missing).
33	Taxes, regulation. Regional organizations which are <u>not</u> in the Federal or State Constitutions run by bureaucrats that are not elected.
34	Town of Newton needs more shops, businesses, cultural center, but no fast foods. More artists and crafts. Need bike routes and wider road shoulders.
35	I would change nothing - at this point. When I was working, it was the drive, <u>but I still would not</u> change where I live.
36	Taxes.
37	Taxes. Fare share of Trenton money.
38	We need less government - the taxes are too high.



What I <u>like</u> about my community from the LIVE perspective...	
39	Lake Mohawk, housing options, the Plaza, Boardwalk, boating, sailing, low/no crime, existing infrastructure, access to open space and recreation.
40	Rural area, hunting, fishing and shooting opportunities. Farms, livestock. Freedom to do things in your backyard that would be banned in cities and towns.
41	A beautiful area. Rural feel. Air quality. Lake community. Hunting, fishing.
42	Lakes. Open space. Trees.
43	Open surrounding. Fresh air. Not congested or overcrowded. Spacious. Good roads. Easy to get around.
44	Open space, parks, rail trails.
45	Open space, rural living, strong local government, resident input in local planning.
46	Less government!
47	Open space activities.
48	No traffic. Open space. Clean air. Independence.
49	County living. Affordable housing. Less traffic.
50	Quality of life. Open spaces. Clean water. Distance between neighbors.
51	Country living. Farmland. Less traffic. Independent.
52	Open space.
53	I like the clean air, the open space, and enjoy watching wildlife. It is a great place to raise a family.
54	Diverse community.
55	Local control of government.
56	Country setting.

What I would <u>change</u> about my community from the LIVE perspective...	
39	Lack of biking/walkable neighborhoods - too car oriented.
40	More public transportation and more bikeways.
41	I wish there was more public transportation.
42	Lack of preservation of historic structures.
43	Public transportation 24/7.
44	I wish a train stop would come to Sussex County <u>faster</u> .
45	Lack of industry; high taxes; education dollars getting taken away.
46	High property taxes.
47	I wish we could keep taxpayer dollars in Sussex County.
48	Infrastructure like small water companies could be taken over by municipalities.
49	High property taxes are driving me out. We need property tax reform.
50	Government regulations too many rules which invade my privacy. Keep Sussex County money in Sussex County. Tax Money. Sch. taxes not going to cities.
51	Big government - want small government. High taxes. The growing size of government.
52	Taxes way to high. Drugs. Lack of shopping. Lack of mass transit. Lack of school choices.
53	Stop funding the non-performers, illegals, inner cities, etc. Stop outsiders deciding our future.
54	School funding - vouchers are a good solution.
55	Traffic going out of county. Low paying jobs. Parents commute an hour away. Need transportation/need economic development.
56	Less state planning. Bring back the rail service. Local job creation for better jobs.



What I <u>like</u> about my community from the LIVE perspective...	
57	Develop a feasible transportation system that creates less traffic. I like living here because I don't have to spend the whole day at Motor Vehicle in a long line.
58	No traffic. No pollution. Better schools. More independent. Less yuppies. You can see the stars. Quality of life is good.
59	The observatory.

An effort was made to record participants responses verbatim. Some notes were unreadable, and a scanned copy can be found in **Appendix H.*

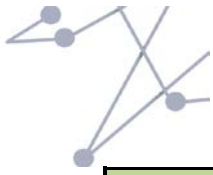
Draft



Appendix B: Summary of Public Input – WORK*

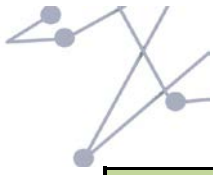
What I <u>like</u> about my community from the WORK perspective...	
1	Work from home. Do my own thing.
2	Rewarding. Free-time from work. Good conditions. Easy commute, cheap. Fellow edu. Background.
3	Walk to work. Work environment.
4	Work from home.
5	I work from home and I love working at home here in Sussex county because of the peaceful atmosphere here.
6	More clean paying jobs.
7	Work from home.
8	Agriculture - more family farms. Business farms - sheep, alpaca.
9	Short commute. Work environment.
10	Eight minutes from home.
11	It took one hour to drive to work and I never minded it because it was so nice to come home.
12	Can own the business and property.
13	Working in an engineering field.
14	I prefer to be self-employed and get paid what I'm worth.
15	Customer base. Owner of business.
16	I can own the real estate where I own my business.
17	I have to travel to work because it gave my children a better place to live.
18	I am retired but I was able to walk to my last job. My husband works close to home, too, but we are unique. I don't want industry moving up here.
19	I like living in the country. Working where a lot of wildlife. Freedom of setting my own schedule.
20	Close proximity to jobs.
21	Close to home.

What I would <u>change</u> about my community from the WORK perspective...	
1	Wider range of jobs.
2	More flexible hours. Ability to ride bike all the way (no shoulders, blind curves).
3	Better options for transportation. Good infrastructure.
4	Would like to work close to home. Clean paying jobs close to home.
5	Change house (where I work).
6	Lower taxes.
7	Better options for transportation.
8	Support of small farms and agricultural businesses. Lower taxes/less regulation.
9	Wider range of jobs. More opportunities.
10	We need more family farms, artisan cheese farms, alpaca farms.
11	Big bureaucracy. Change career - government regulation prevents change; high taxes.
12	Red tape. Politics.
13	Less government intervention.
14	Increase alternative transportation.
15	Increase opportunities.
16	Less "hopeless change."
17	Government intrusion.
18	Higher pay.
19	Prejudice towards position by public.
20	Mass transit. Location isn't safe to live/work. Congestion.
21	Not making enough money. Paying too much taxes. Too much government regulation and interference.



What I <u>like</u> about my community from the WORK perspective...	
22	Likes working with students and watching their growth.
23	Work location.
24	Entrepreneurship - resources to support Tech for people that want to start new jobs.
25	Freedom to do what I like.
26	Close proximity to jobs.
27	Retired.
28	Close to home - commute.
29	I like my job, the people I work with, my environment.
30	How close it was to home.
31	I like being able to telecommute/work from home business.
32	Well paying job.
33	Close to home. Considers outside interests and family time. Encourages fitness. "Young" company.
34	Like working in a park: open space, healthy lifestyle, promotion.
35	Like things just as they are.
36	Working in my house. No commuting.
37	Working in a small office 5 minutes from home for a modest but acceptable wage and good benefits.
38	Professional, meaningful, local and global.
39	I was the boss in charge. I could make a difference in people's lives.
40	Entrepreneurship opportunities. Short drive to work. Scenic commute to work.
41	Opportunity - working in county reduces commute, allows quality time with family.
42	Cheaper to do business in Sussex County; small business-friendly.
43	Open space. Clean air.
44	I want to retire and be able to afford it.

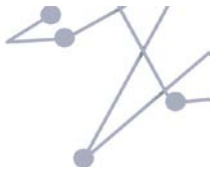
What I would <u>change</u> about my community from the WORK perspective...	
22	Not making enough money. Paying too much taxes. Too much government regulation and interference.
23	Nothing.
24	Lack of public transportation.
25	More transportation options. More jobs in Sussex County.
26	Nothing.
27	Regulation from township on small business.
28	The incumbent Congressman, Governor, President.
29	Lack of manufacturing jobs.
30	Nothing. Keep the industries out of here.
31	The widening of Route 23 to go 1/2 mile - for what???
32	Low pay scale. No mix of potential jobs.
33	Dislike: Not working!
34	Tax burden on small businesses.
35	Stop urban development in Sussex County
36	Work should exist in Sussex County.
37	Need more mom and pop business to support the local economy.
38	Keep industry out. Encourage small business. Keep government regulations (i.e. Obamacare) out of our county business.
39	Create more transit system - no more roads.
40	Taxes not used locally. Too far to travel for work. No public transportation.
41	Bigger pension.
42	Want to be older so I can retire.
43	Who pays for work training? Get rid of Obamacare now. Fracking will create jobs.
44	Too much government regulation. Taxes are too high. Business is discouraged.



What I <u>like</u> about my community from the WORK perspective...	
45	I have a job that I'm the boss.

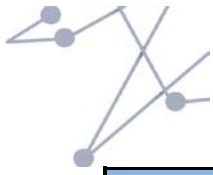
What I would <u>change</u> about my community from the WORK perspective...	
45	Reduce government planning/interference.
46	Low enough taxes to afford retirement.
47	Federal and State should remove regulations, repeal Obamacare, allow natural resource development.
48	The cost of doing business. Government needs to get out of business.
49	I would like to see more local jobs with good pay.
50	Lower payroll taxes for business owners.
51	Lower taxes.
52	Lack of advancement and job opportunities within my profession in this region.
53	I'd like to be able to bicycle to work and to go out at lunch to a village-like area with small, independent shops.
54	Increase opportunity for small businesses to incubate, share resources, reduce government bureaucracy.
55	Must increase minimum wage, must increase retirement funds - employer contribution must encourage retirement thru helping employees fund their retirement.
56	Need to attract more business and industry, need to create jobs to decrease out of county commute.
57	Lower taxes. Want more businesses to move to Sussex County.
58	Want to reduce government regulations. Get government out of way so business can be successful! Lower business taxes.
59	Being on call.

An effort was made to record participants responses verbatim. Some notes were unreadable, and a scanned copy can be found in **Appendix H.*



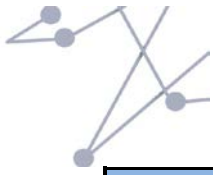
Appendix B: Summary of Public Input – GETTING AROUND*

What I like about my community from the perspective of GETTING AROUND....		What I would change about my community from the perspective of GETTING AROUND...	
1	Lakeland bus provides good transportation - private company.	1	Too much government regulation of environment. Government involvement in health plans. No central planning, only local works.
2	Nothing! Roads are jammed, construction, trains take too long, buses - cost and traffic.	2	Have a variety of options to choose from. (Restrict buses)
3	Quiet roads. Well maintained in winter.	3	I would like a link-up with Wayne light rail.
4	Getting around with no traffic.	4	Newton Sparta Road. Traffic/access. Worthless government.
5	Major highways close but not too close - mobility.	5	If there is a need for transportation there will be a private enterprise to provide it.
6	Being able to drive around the county during non-rush hour.	6	Less government intervention. Agenda 21.
7	Good roads. Relatively congestion-free travel.	7	Need more public transit.
8	Preservation of small county roads wherever possible - and of historic landscape.	8	Better public transit access for public, special needs, seniors.
9	I like the open space and green undeveloped areas with trails/biking.	9	Access to public transit.
10	Rural look and feel of county.	10	Tolls on public highways excessive.
11	Open space. Clean air.	11	I would like to change the way towns are restricted to create a transportation system that could get me around in town as well as out of the county.
12	Excellent roads and maintenance. Walking paths, bike trails, horse riding trails, etc. Low/no traffic. Rural.	12	Public transit.
13	I like driving around in my car.	13	I don't like having to pay to leave the state. No tolls!
14	Rural character of roads. Country roads, winding roads. Make roads better - slower traffic, speed safer. Use of liquid salt before storm.	14	Government regulation on the environment. Gov't staying out of our health care. No central planning - only local.
15	Driving in the county - beautiful and relaxing. Recreation in this area.	15	Transportation 206. No buses or trains.
16	Small airports.	16	Use more sidewalks. Need more bikeable/walkable routes between living and shopping and working.
17	Have mall. Newton for shopping. Short drive - very convenient.	17	More free market transportation (less government ownership).
18	Trail system. Walkable communities. Relatively little traffic.	18	No more big box stores. No eminent domain to make room for them.
19	Driving my own car.	19	Ability to use public transportation within the region.
20	Roads - good roads.	20	There's no alternative to taking a car.



What I like about my community from the perspective of GETTING AROUND....	
21	Light traffic. Maintenance. Rural character.
22	Driving my own car.
23	Country roads.
24	Excellent for biking.
25	Freedom of getting around because the roads are very good. Snow removal and emergency services are excellent.
26	Sussex County is great just the way it is.
27	Easy to travel.
28	Safe neighborhood to live in, our schools, having a say in our community.
29	Roads are good but one lane.
30	Safe neighborhood, our schools, having a say in our local government.
31	Scenery - country setting.
32	Preserving and improving downtowns.
33	Access to county roads.
34	I enjoy the diverse options that Sussex County as to offer.
35	Country setting.
36	New trails. Rural roads.
37	Walking is safe in my town.
38	I like living in Sussex County because it is a safe area.
39	I love my neighborhood.
40	I <u>love</u> Sussex County just the way it is. Can bike/hike anywhere.
41	We like Wantage the way it is, we want to be left alone, same with Sussex County.
42	The solitude of Wantage.
43	Sussex County is quiet, relaxing on weekends. Rural setting.

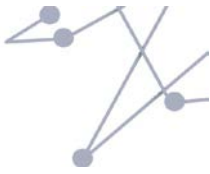
What I would change about my community from the perspective of GETTING AROUND...	
21	I want a train to NY.
22	Want a train to come sooner! Would like more public transportation.
23	I want less government. Less regulation.
24	Preservation of historic structures.
25	I would change by adding more public transport options and fewer bigger roads.
26	No Change. No added buses, trains widened roads bring in outsiders and added problems. I live here for a reason.
27	Need 24-7 public transport.
28	Don't change Sussex County. I live here because I don't want the city life!
29	Paint bike lanes on all major county roads or create separate bike lanes.
30	We need a county-wide fleet of small buses to get people to/from bus stops and to main streets to shop and linger.
31	Train to Netcong on weekends.
32	Need for another hospital.
33	More cameras for speeding, running red lights and stop signs. Enforce yielding to pedestrians.
34	Leave Sussex County alone.
35	Government trying to move in.
36	No new people in Wantage.
37	Government interference. No growth.
38	Jobs.
39	No change. Leave the people and property alone. Concentrate on bringing jobs to NJ and let transportation follow. No crony payments to crony companies - engineering firms.
40	Taxes.
41	Some of the sidewalks are in need of repair.
42	Maintenance of roadside vegetation and street lighting.
43	Reduce taxes.



What I like about my community from the perspective of GETTING AROUND....	
44	I love where I live and I hope to live there for the rest of my life.
45	Wayne - nothing.
46	No traffic. Open space.
47	State parks, farmland.
48	Our community is quiet and safe. A lake community where our children can walk to activities in safety.
49	Everything
50	Cliffside Park - Like: not much. Incomplete town center.

What I would change about my community from the perspective of GETTING AROUND...	
44	Tax burden reduction!
45	Freeholders.
46	Bike paths, walkways, sidewalks. North/South transit system.
47	Nothing!!!!
48	I would like to change the State and Federal governments' intrusion into local government.
49	That outsiders would consider changing our community.
50	Reduce taxes. Too much spend on public works.
51	Train line!!! More public transit.
52	Wetlands too strict.
53	Institute intelligent rail transit.
54	Expand rail.
55	More public transportation. More bike paths.
56	Reduce taxes.
57	Commuter rail service to the adjoining counties and business centers. Improved intersections on our roads.
58	Taxes to be lower and dollars to stay in Sussex County.
59	Lower gas prices. Build pipeline - don't let it go to China.
60	We want the Lackawanna cut-off completed.
61	Lower taxes.
62	Improved commuter service - bus, rail, light rail. Bike and Ped lanes. Trails connecting towns. Easier traffic at congestion (choke) points. Calming.

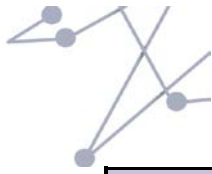
An effort was made to record participants responses verbatim. Some notes were unreadable, and a scanned copy can be found in **Appendix H.*



Appendix C: Priority Objectives – Missing

The following table is a list of ideas that participants felt were missing from the Goals and Objectives presented at the workshop.

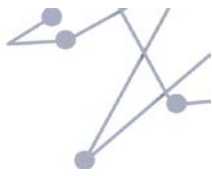
LIVE		WORK		GETTING AROUND	
1	Fair share of Trenton money.	1	Lower taxes.	1	No buses.
2	No box stores - they ruined small business which are the main stay of our economy.	2	De-emphasize chain stores and big boxes, promote small, independent businesses.	2	You have not considered: Property tax burden. Individual property rights as an utmost importance. Retention of local control so that individual towns/cities can withdraw and so that the persons making the decisions are elected by the people.
3	Reduce taxes for the county.	3	Well-paying jobs.	3	Climate change is a "hoax." It's called seasons. Where is global warming?
4	Maintain a healthy spiritual life through many churches and youth activities.	4	Attracting new businesses.	4	Jobs first! Transport later.
5	School choice, no unions. Abbott districts - unfair to the majority.	5	Entrepreneurship.	5	Local control over transportation options.
6	Preservation of historic properties such as Walpack, Waterloo Village, Newton Academy.	6	Make government more efficient.	6	Taxes should be spent in local community where taxes are collected. A small portion should go to state. Increase local control of community.
7	Retired - looking for work in technical field.	7	Reduce the size of government.	7	More churches.
8	Encourage/bring more business to Sussex County.	8	Most important for government to leave me alone.	8	We need to keep our individual property rights.
9	Improve alternatives to transportation: 1. Trails connecting Comm. 2. Improve Ped. Access. 3. Improve traffic calming. 4. Work with volunteer groups to achieve these goals.	9	God created the seasons, the sun, moon, stars, the earth. Man cannot change the climate. (Goal 5-c)	9	Get rid of Wal-Mart type store because you can't revitalize the towns without the mom and pop stores.



LIVE	
10	Power and water management.
11	Reduce property taxes.
12	Reduce government. Lower taxes, less regulation, get power out of hands of politicians and bureaucrats and return it to the people.
13	Build churches and religious institutions.
14	Take the money you are wasting on this and pay down Public Debt - 17 Trillion.
15	Taxes are causing many to move out of state. We need to find ways of reorganizing the tax rate.
16	This is a waste of my time. Don't tell me "you" chose these things - For \$110,000.00

WORK	
10	Do not turn downtown Newton into downtown Newark. (Goal 4-b)
11	Freedom to choose what I want to do.
12	Keep government regs out of small businesses. (Obamacare putting mom and pops out of business, etc.)
13	Create more Work/Play/Live environments.
14	Need to have religious churches - etc.
15	We don't need stack and pack housing in Sussex County.

GETTING AROUND	
10	Taxes collected should be spent in communities where they are collected with a small portion for government operations.
11	Trail network. Walk to school/work/entertain.
12	God created the seasons, the earth, sun, moon and stars. Man cannot change weather or climate.
13	No change.
14	Get government out of the public transportation business (it is a private sector responsibility, not government.)
15	Access to public transit.
16	Connecting transportation, housing and jobs.
17	Transportation alternatives to driving alone.
18	Electric cars.
19	How much is this program costing the American public? We are in 17 trillion debt.
20	Need for quicker bus links for internal area and for out of county.
21	Less government. Less regulation.

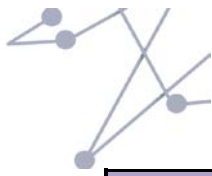


Appendix D: Priority Objectives

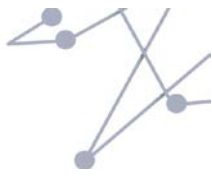
At each station, participants were asked to rank the Objectives within the Goals, including any added Objectives from the attendees. Each participant was able to vote for a total of three objectives, prioritizing them as “Most Important” (represented with a green dot), “Very Important” (blue dot), and “Important” (yellow dot). The votes were weighted according to the following system: Most Important received 3 points, Very Important 2 points, Important 1 point. Then, each Objective received a total score. Total = (Most Important x3) + (Very Important x 2) + (Important)

Appendix D: Priority Objectives – LIVE

LIVE				
Goals	Most Important by weight	Very Important by weight	Important by weight	Total
Goal 1 - Strengthen the region's economy	0	0	0	0
Keep and create well-paying jobs	6	4	4	14
Ensure infrastructure (transportation, utilities and communications) is in good repair and can support economic development	12	4	2	18
Increase the economy's ability to adapt to change	0	0	0	0
Increase regional self-sufficiency	3	4	1	8
Goal 2 - Ensure communities are safe, healthy & great places to live	0	0	0	0
Create safe, stable neighborhoods with high-quality housing	6	2	0	8
Improve public health	3	0	1	4
Improve access to local parks and recreation	0	0	0	0
Improve access to community resources such as libraries, senior centers, youth activities	0	2	5	7
Preserve and enhance the character of existing downtowns and neighborhoods	3	0	1	4
Improve access to arts and cultural resources	0	2	0	2
Goal 3 - Improve everyone's access to opportunity	0	0	0	0
Connect where people live with where they need to go	6	6	1	13
Maintain and improve the quality of schools	0	6	5	11
Create inclusive, mixed-income neighborhoods	0	0	0	0
Reduce combined transportation and housing costs	0	0	1	1

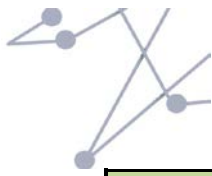


LIVE				
Goals	Most Important by weight	Very Important by weight	Important by weight	Total
Goal 4 - Enhance efficiency & conserve land	0	0	0	0
Increase investment near existing housing, jobs & transportation	3	4	1	8
Maintain & expand vibrant downtowns and "main streets"	0	6	2	8
Encourage development of compact neighborhoods with a mix of housing, shopping and services	3	0	1	4
Goal 5 - Protect & enhance environment	0	0	0	0
Preserve open space and natural areas	27	6	0	33
Improve air quality	0	2	1	3
Reduce potential impacts of climate change	3	0	0	3
Increase ability to respond to and recover from extreme weather events	3	0	0	3
Ensure adequate water supply	3	18	3	24
Improve water quality	0	0	1	1
Direct development away from environmentally sensitive areas	6	2	1	9
Preserve wildlife habitat	0	2	3	5
OTHER				
Fair share of Trenton money	3	0	0	3
Reduce taxes for the county	9	2	1	12
No box stores	3	0	0	3
Maintain a healthy spiritual life through many churches and youth activities	0	2	0	2
Preservation of historic properties	6	4	2	12
Encourage/bring more business to Sussex County	3	0	0	3
Improve alternatives to transportation	0	0	1	1
This is a waste of my time. Don't tell me "you" chose these things - For \$110,000.00	0	0	2	2
Take the money you are wasting on this and pay down Public Debt - 17 Trillion	3	0	0	3
Power and water management	3	0	0	3
Reduce property taxes	9	0	0	9
Build churches and religious institutions	3	4	0	7
Reduce government	27	20	10	57

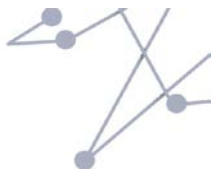


Appendix D: Priority Objectives – WORK

WORK				
Goals	Most Important by weight	Very Important by weight	Important by weight	Total
Goal 1 - Strengthen the region's economy	0	0	0	0
Keep and create well-paying jobs	30	6	3	39
Ensure infrastructure (transportation, utilities and communications) is in good repair and can support economic development	27	12	1	40
Increase the economy's ability to adapt to change	3	0	1	4
Increase regional self-sufficiency	0	0	3	3
Goal 2 - Ensure communities are safe, healthy & great places to live	0	0	0	0
Create safe, stable neighborhoods with high-quality housing	0	2	0	2
Improve public health	3	4	1	8
Improve access to local parks and recreation	0	2	0	2
Improve access to community resources such as libraries, senior centers, youth activities	0	4	1	5
Preserve and enhance the character of existing downtowns and neighborhoods	0	2	2	4
Improve access to arts and cultural resources	3	0	1	4
Goal 3 - Improve everyone's access to opportunity	0	0	0	0
Connect where people live with where they need to go	0	6	1	7
Maintain and improve the quality of schools	3	0	6	9
Create inclusive, mixed-income neighborhoods	3	0	1	4
Reduce combined transportation and housing costs	0	4	1	5
Goal 4 - Enhance efficiency & conserve land	0	0	0	0
Increase investment near existing housing, jobs & transportation	0	0	0	0
Maintain & expand vibrant downtowns and "main streets"	0	2	0	2
Encourage development of compact neighborhoods with a mix of housing, shopping and services	6	0	1	7

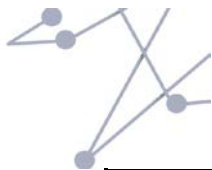


WORK				
Goals	Most Important by weight	Very Important by weight	Important by weight	Total
Goal 5 - Protect & enhance environment	0	0	0	0
Preserve open space and natural areas	6	2	1	9
Improve air quality	0	0	0	0
Reduce potential impacts of climate change	3	0	4	7
Increase ability to respond to and recover from extreme weather events	0	0	0	0
Ensure adequate water supply	3	2	0	5
Improve water quality	0	0	1	1
Direct development away from environmentally sensitive areas	0	0	1	1
Preserve wildlife habitat	0	2	1	3
OTHER				
Reduce the size of government.	54	20	8	82
Most important for government to leave me alone.	3	2	0	5
Freedom to choose what I want to do.	0	2	0	2
Do not turn downtown Newton into downtown Newark. (Goal 4-b)	0	0	1	1
Keep government regs out of small businesses. (Obamacare putting mom and pops out of business, etc.)	0	6	1	7
Need to have religious churches - etc.	0	2		2
We don't need stack and pack housing in Sussex County.	3	0	2	5
Well-paying jobs	3	4	2	9
Attracting new businesses	6	6	3	15
Entrepreneurship	3	2	2	7
Lower taxes	9	14	2	25



Appendix D: Priority Objectives – GETTING AROUND

GETTING AROUND				
Goals	Most Important by weight	Very Important by weight	Important by weight	Total
Goal 1 - Strengthen the region's economy	0	0	0	0
Keep and create well-paying jobs	9	2	2	13
Ensure infrastructure (transportation, utilities and communications) is in good repair and can support economic development	12	0	1	13
Increase the economy's ability to adapt to change	6	0	0	6
Increase regional self-sufficiency	0	0	1	1
Goal 2 - Ensure communities are safe, healthy & great places to live	0	0	0	0
Create safe, stable neighborhoods with high-quality housing	0	4	0	4
Improve public health	3	0	0	3
Improve access to local parks and recreation	0	0	0	0
Improve access to community resources such as libraries, senior centers, youth activities	0	6	1	7
Preserve and enhance the character of existing downtowns and neighborhoods	9	2	3	14
Improve access to arts and cultural resources	0	0	2	2
Goal 3 - Improve everyone's access to opportunity	0	0	0	0
Connect where people live with where they need to go	0	4	3	7
Maintain and improve the quality of schools	0	0	6	6
Create inclusive, mixed-income neighborhoods	0	2	2	4
Reduce combined transportation and housing costs	0	0	0	0
Goal 4 - Enhance efficiency & conserve land	0	0	0	0
Increase investment near existing housing, jobs & transportation	0	0	0	0
Maintain & expand vibrant downtowns and "main streets"	3	4	2	9
Encourage development of compact neighborhoods with a mix of housing, shopping and services	0	2	1	3

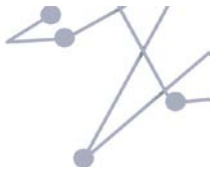


GETTING AROUND				
Goals	Most Important by weight	Very Important by weight	Important by weight	Total
Goal 5 - Protect & enhance environment	0	0	0	0
Preserve open space and natural areas	27	14	3	44
Improve air quality	0	0	1	1
Reduce potential impacts of climate change	3	2	1	6
Increase ability to respond to and recover from extreme weather events	0	0	1	1
Ensure adequate water supply	6	10	2	18
Improve water quality	0	0	0	0
Direct development away from environmentally sensitive areas	3	0	1	4
Preserve wildlife habitat	0	0	2	2
OTHER				
No buses	3	0	0	3
Property tax burden. Individual property rights as an upmost importance. Retention of local control so that individual towns/cities can withdraw and so that the persons making the decisions are elected by the people.	18	24	8	50
Climate change is a "hoax." It's called seasons. Where is global warming?	0	0	1	1
Jobs first! Transport later.	0	2		2
Local control over transportation options.	0	2	1	3
Get rid of Wal-Mart type store because you can't revitalize the towns without the mom and pop stores.	3	2	1	6
Taxes collected should be spent in communities where they are collected with a small portion for government operations.	9	2	0	11
Get government <u>out</u> of the public transportation business (it is a private sector responsibility, not government.)	3	0	0	3
Access to public transit.	15	6	3	24
Connecting transportation, housing and jobs.	6	4	1	11
Transportation alternatives to driving alone.	9	6	0	15
How much is this program costing the American public? We are in 17 trillion debt.	3	0	1	4
Less government. Less regulation	3	2	1	6



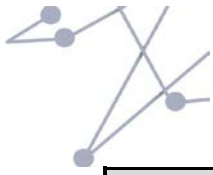
Appendix E: Together North Jersey Station

COORDINATE	
Goal 6 - Address regional growth issues	Totals
Align existing plans, programs and regulations at all levels of government	0
Foster collaboration between federal, state, county and local governments to address regional growth issues	4
Maintain up-to-date, coordinated local, regional and State functional plans that reflect these goals	0
Provide a regional framework for making decisions about capital investments, programs, regulations and major development applications	5
Ensure a broad cross-section of residents, businesses and government are engaged in planning efforts, including those traditionally under-represented in regional planning processes	6
Respect property rights during planning and implementation	16
OTHER	
How can a town not participate?	4
None of the above.	15
Total:	50



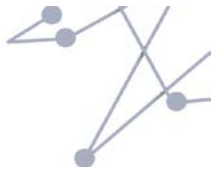
Appendix F: Together North Jersey Station – Suggestions from the Public

What's Missing?
Issues and Challenges:
1. Safety and security. Right to carry.
2. Tax break on businesses that are recreational. High taxes.
3. Lack of volunteers for volunteer fire and rescue.
4. Redundant use of planners and use of tax monies
5. Cost of growth: Never pays for itself, common problem, relationship between growth and taxes.
6. We need our share of money up here, esp. transportation/access to jobs.
7. We don't need change here.
Opportunities and Suggestions:
1. Please leave Sussex County alone.
2. Repair existing roads.
3. Instead of big business bailouts, how about funneling funds for the small business owner?
4. I would like a category added "Less government/No new taxes."
5. This is predetermined by Clinton presidential policies. Reverse flow back to cities.
6. Jobs for retirees.
7. This sounds like Agenda 21 and we don't want it.
8. More time at each station.
9. It seemed some participants hand an "agenda" i.e. not good listeners. The TNJ people struggled to answer legit questions being overwhelmed with "agenda" participants.
Questions*:
1. How is this related to Agenda 21?
2. Who is making the decisions? What are the enforcement mechanisms?
3. How do we protect Sussex County from being outvoted?
4. How does someone become part of Together North Jersey?
5. Feasibility of LRT link from Wayne to Franklin Lakes?
6. Electric grid?
7. Workforce sustainability?
8. Why is change so important?
9. How can we opt out?
10. Are you going to violate our property rights?
11. Please comment on how many planners exist and receive duplicate pay, if any.
12. Where do town planners, whose salaries we pay with our taxes, fit in with this?
13. How much of the study has been produced before or taken from the World Economic Towns?



14. Why don't we tax payers have a vote to approve these plans? We should have a say in how our money is used.
15. How not to participate?
16. Why are we only involved in one project? What are the other 39 projects?
17. Is this related to the \$2B HUD offering?
18. Is there any legislation tied to this plan?
19. Who is paying for this?
20. How much money did Sussex County get?
21. My town already started a sustainable project. Will you be doing something similar?
22. Our taxes are already too high. Who is going to pay for this?
23. Sustainability of jobs? Economic development opportunities?
24. How do others know about the challenges we face in Sussex County?
25. How does a citizen become part of the project team?
26. Will there be a regional council?
27. Who are doing the planning?
28. Why do cities get a vote? Counties with a city get two votes?
29. How can we exempt ourselves from any of this?
30. Is this occurring in other states?
31. How many stakeholders were in this meeting that would benefit from the outcome that were not identified at meeting start?
32. What about our Agri-tourism?

* Together North Jersey will post responses to the questions raised on the Together North Jersey website



Appendix G: Interactive Polling

Session Name: SUSSEX Session 5-13-2013 9:36 PM

Date Created: 5/13/2013 6:09:22 PM **Active Participants:** 73 of 73

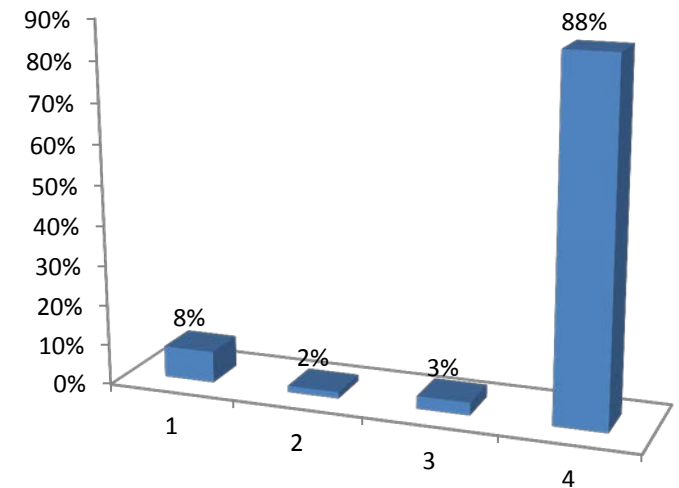
Average Score: 0.00% **Questions:** 22

Results By Question

PRACTICE QUESTION

1.) "Jersey Shore" is must-see TV. (Multiple Choice)

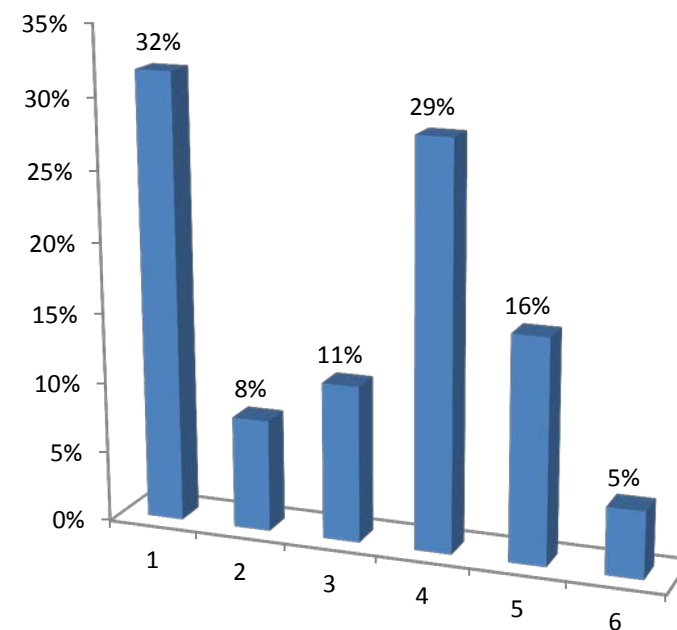
	Responses	
	Percent	Count
Strongly Agree	8%	5
Somewhat Agree	2%	1
Somewhat Disagree	3%	2
Strongly Disagree	88%	56
Totals	100%	64

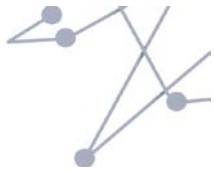




2.) What aspect of Personal Growth and Well-Being is most important to you? (Multiple Choice)

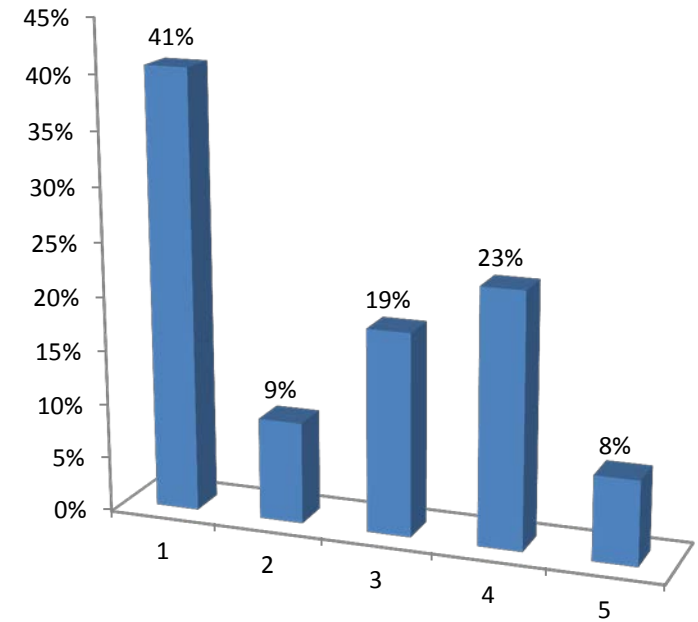
	Responses	
	Percent	Count
Being healthy and taking care of yourself	32%	20
Being close to nature	8%	5
Volunteering and giving back to your community	11%	7
Spirituality and religion	29%	18
None of the above	16%	10
Prefer not to answer	5%	3
Totals	100%	63

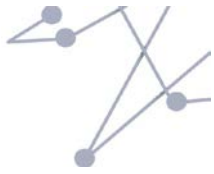




3.) What aspect of Family is most important to you? (Multiple Choice)

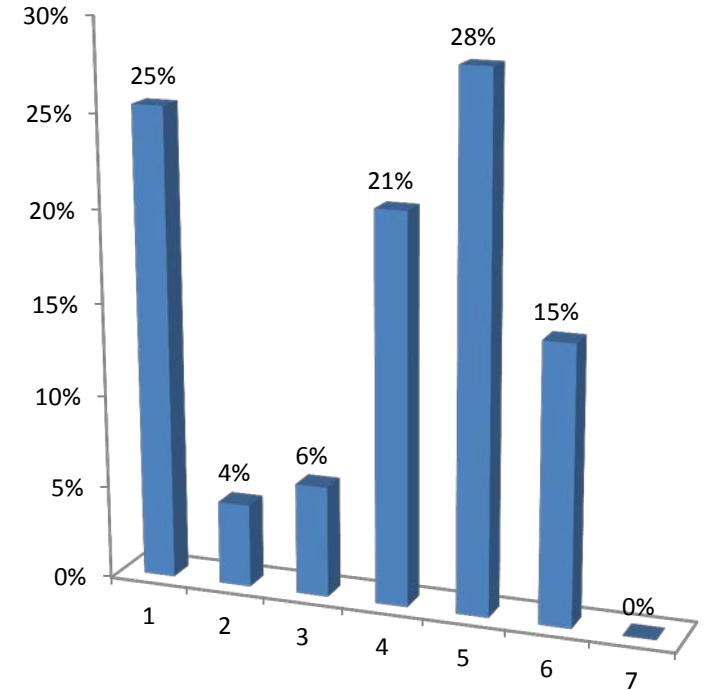
	Responses	
	Percent	Count
Having time to spend together	41%	26
Having extended family nearby	9%	6
Making time for recreational and cultural activities together	19%	12
None of the above	23%	15
Prefer not to answer	8%	5
Totals	100%	64

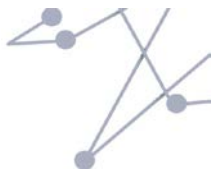




4.) What aspect of Community is most important to you? (Multiple Choice)

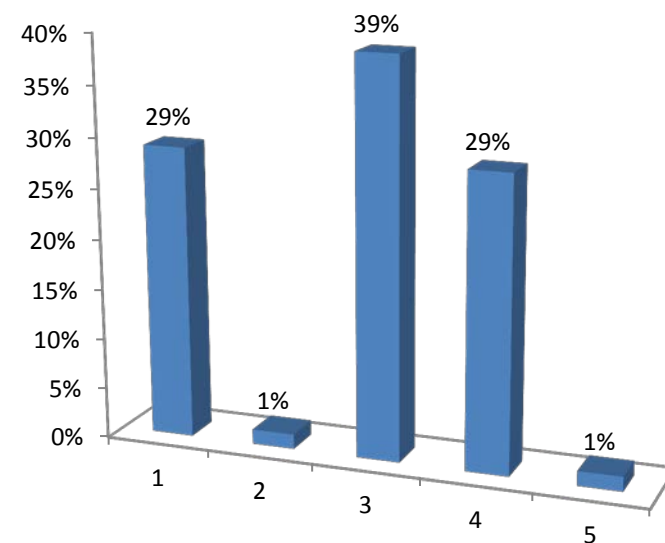
	Responses	
	Percent	Count
Feeling a sense of community	25%	17
Having community-sponsored activities to go to	4%	3
Living in a diverse community	6%	4
Having good neighbors and being a good neighbor	21%	14
Being self-reliant and left alone	28%	19
None of the above	15%	10
Prefer not to answer	0%	0
Totals	100%	67





5.) What aspect of Education is most important to you? (Multiple Choice)

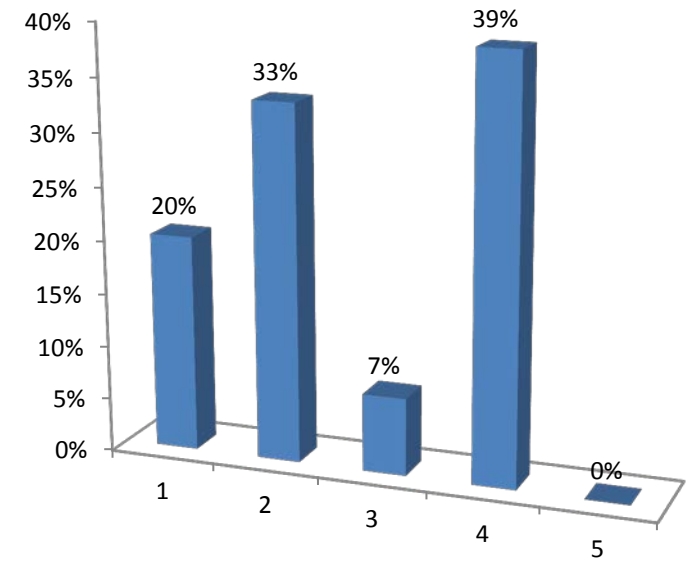
	Responses	
	Percent	Count
Having quality neighborhood schools	29%	20
Being able to go to college or a trade school	1%	1
Having opportunities to keep learning all through life	39%	27
None of the above	29%	20
Prefer not to answer	1%	1
Totals	100%	69





6.) What aspect of Nature is most important to you? (Multiple Choice)

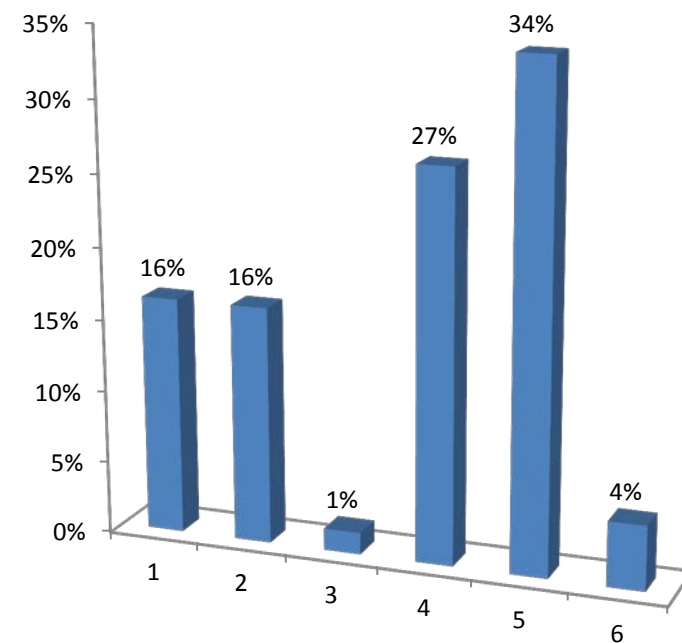
	Responses	
	Percent	Count
Having green space nearby	20%	14
Taking good care of our air, water and natural lands	33%	23
Protecting wildlife habitat	7%	5
None of the above	39%	27
Prefer not to answer	0%	0
Totals	100%	69





7.) What aspect of Safety and Security is most important to you? (Multiple Choice)

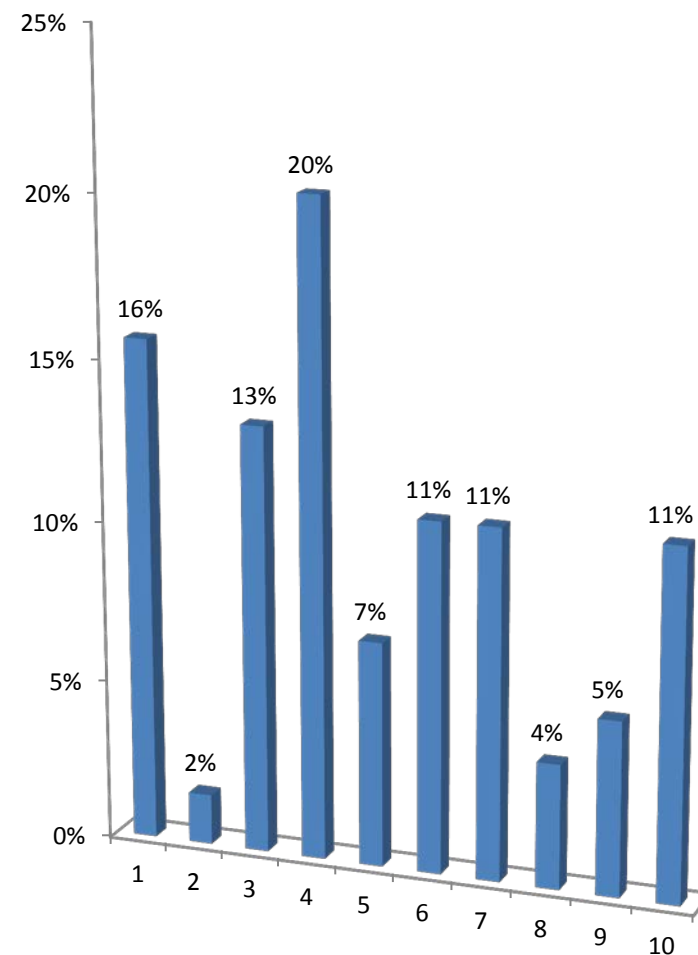
	Responses	
	Percent	Count
Having a good paying job	16%	11
Having Safe neighborhoods	16%	11
Fewer traffic-related accidents	1%	1
Peace of mind about the future	27%	18
None of the above	34%	23
Prefer not to answer	4%	3
Totals	100%	67

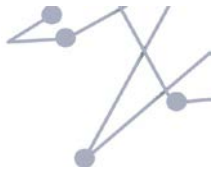




8.) How should the region spend transportation dollars? (select three) (Multiple Choice - Multiple Response)

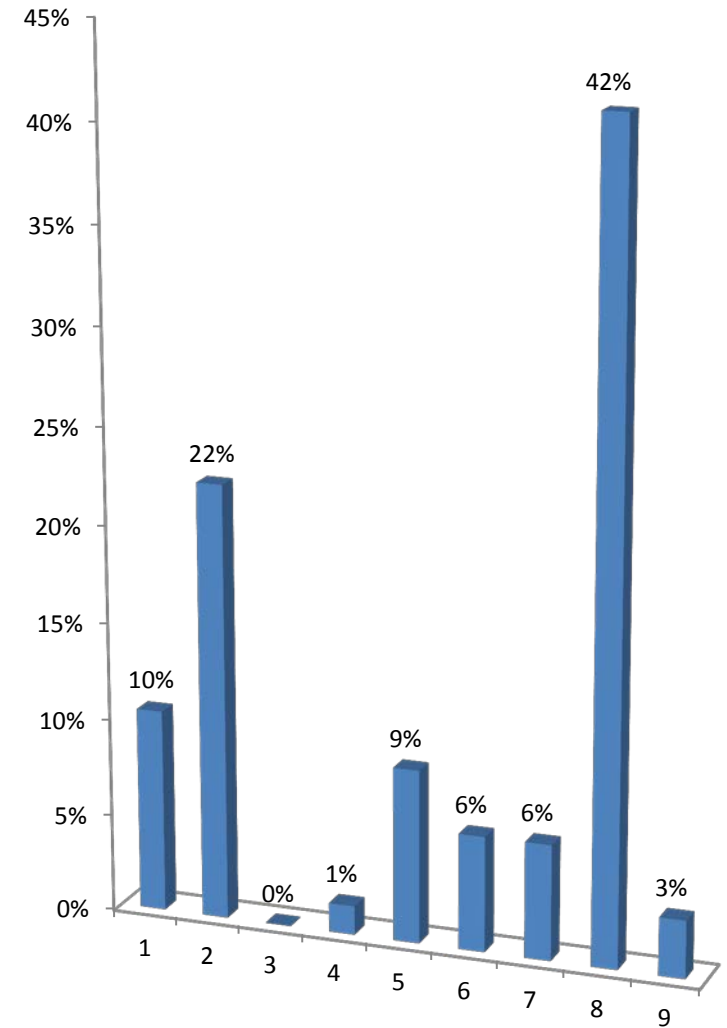
	Responses	
	Percent	Count
Fixing unsafe bridges	16%	20
Building more highways	2%	2
Making existing highways work better	13%	17
Expanding transit service	20%	26
Making existing transit work better	7%	9
Making it easier to transport goods and materials around the region	11%	14
Using technology to improve transportation	11%	14
Supporting more carpooling and shuttles	4%	5
Making our roads safer	5%	7
Making it easier to walk and bike where we need to go	11%	14
Totals	100%	128

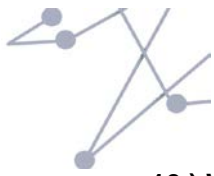




9.) What sources of funds should be used to support transportation? (Multiple Choice)

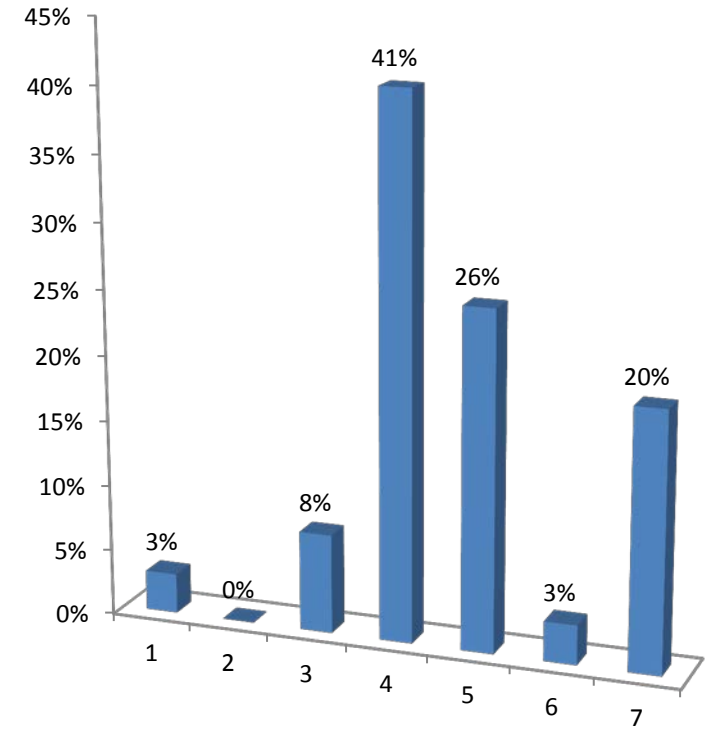
	Responses	
	Percent	Count
Transit fares and tolls	10%	7
Gas taxes	22%	15
General taxes like income tax or sales tax	0%	0
Borrowing more money and paying it off over time	1%	1
Selling “naming” rights to bridges, highways and train stations like we do with stadiums and arenas	9%	6
Working with banks and businesses to share costs and revenue from tolls and fares	6%	4
All of the above	6%	4
None of the above	42%	28
Prefer not to answer	3%	2
Totals	100%	67

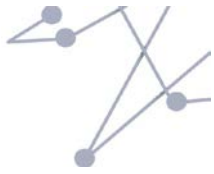




10.) Which group best describes your age? (Multiple Choice)

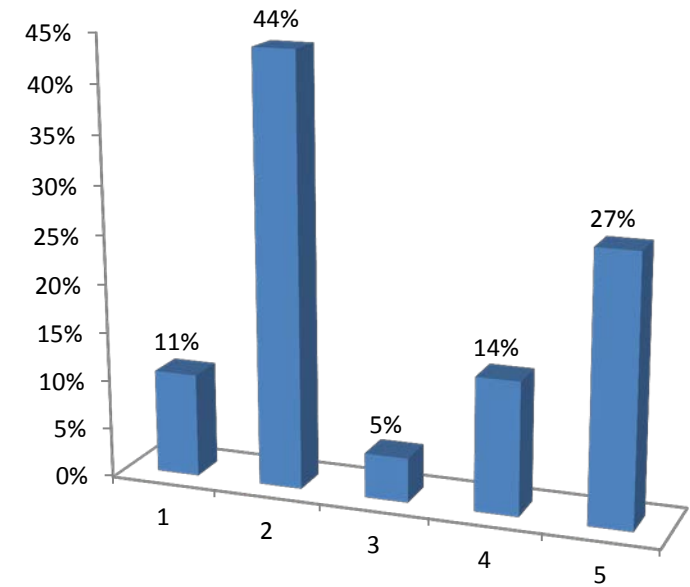
	Responses	
	Percent	Count
Under 25	3%	2
25-34	0%	0
35-44	8%	5
45-64	41%	27
65-74	26%	17
75 years and older	3%	2
Prefer not to answer	20%	13
Totals	100%	66

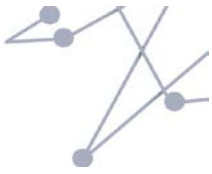




11.) What is your household size? (include yourself) (Multiple Choice)

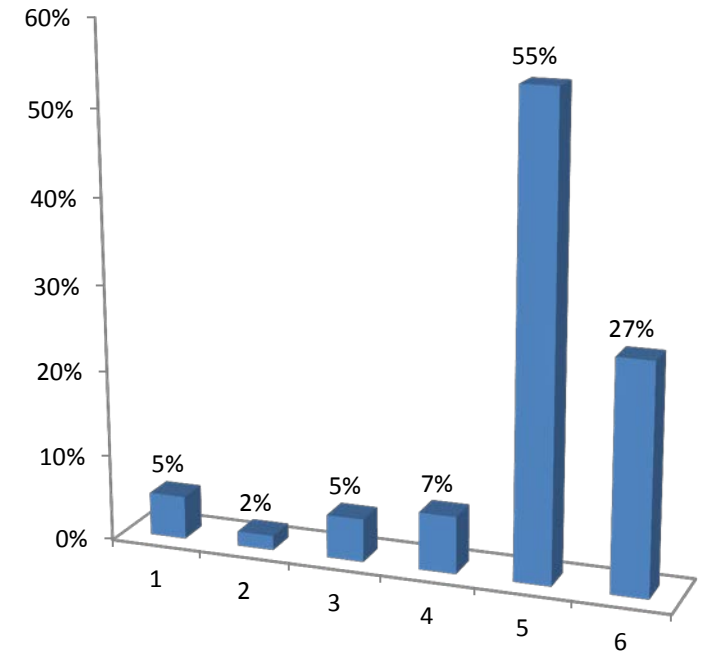
	Responses	
	Percent	Count
1 person household	11%	7
2 person household	44%	29
3 person household	5%	3
4 or more person households	14%	9
Prefer not to answer	27%	18
Totals	100%	66

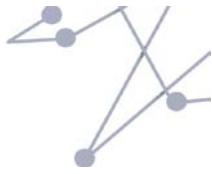




12.) How many persons in your household are under the age of 18? (Multiple Choice)

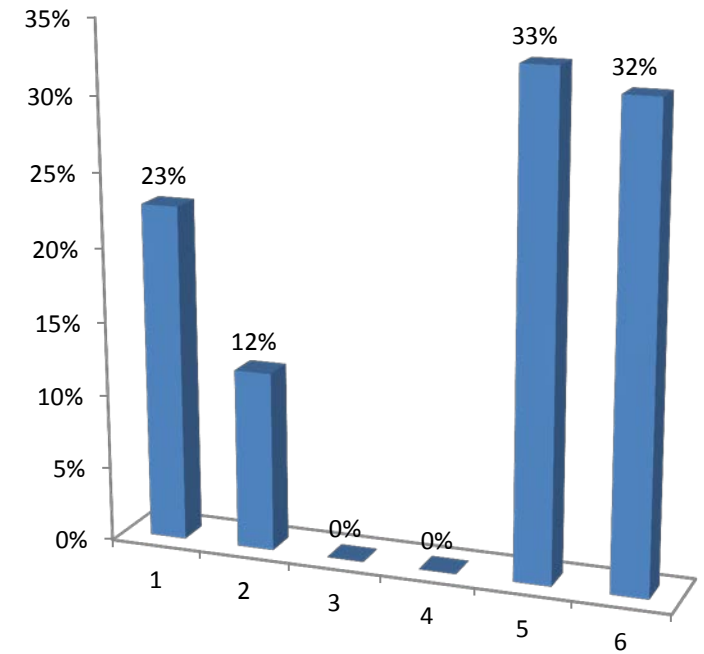
	Responses	
	Percent	Count
One (1)	5%	3
Two (2)	2%	1
Three (3)	5%	3
Four or more (4+)	7%	4
None	55%	33
Prefer not to answer	27%	16
Totals	100%	60

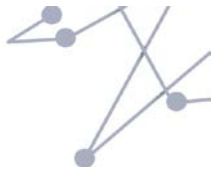




13.) How many persons in your household are over the age of 65? (Multiple Choice)

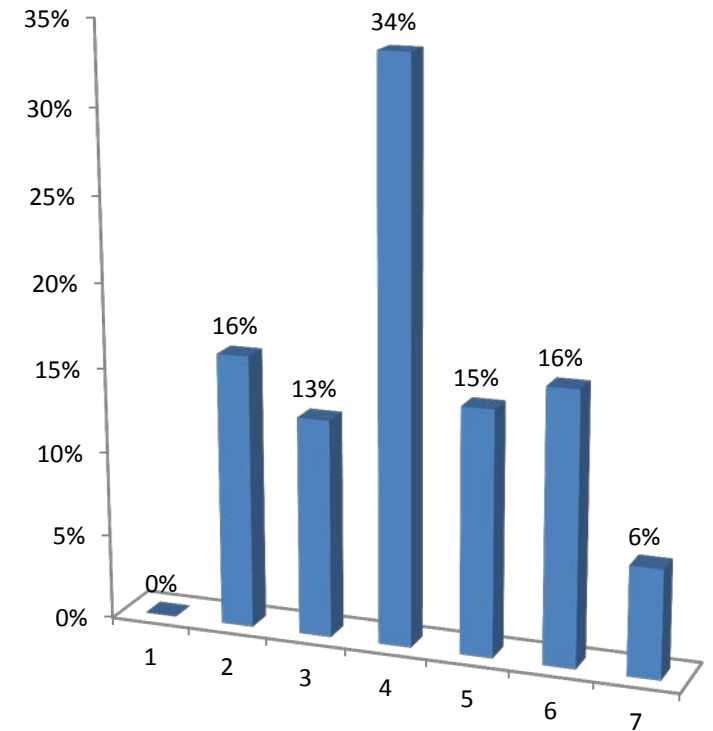
	Responses	
	Percent	Count
One (1)	23%	15
Two (2)	12%	8
Three (3)	0%	0
Four or more (4+)	0%	0
None	33%	22
Prefer not to answer	32%	21
Totals	100%	66





14.) How would you describe the community in which you live? (Multiple Choice)

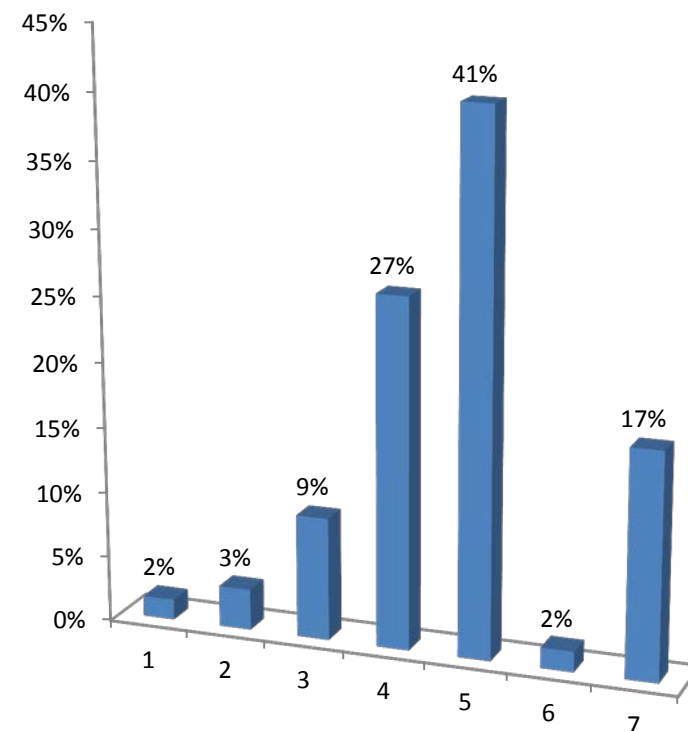
	Responses	
	Percent	Count
City	0%	0
Small town	16%	10
Suburban township	13%	8
Rural township	34%	21
Vacation/Resort community	15%	9
None of the above	16%	10
Prefer not to answer	6%	4
Totals	100%	62

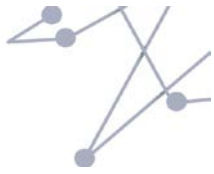




15.) How long have you lived in your current neighborhood? (Multiple Choice)

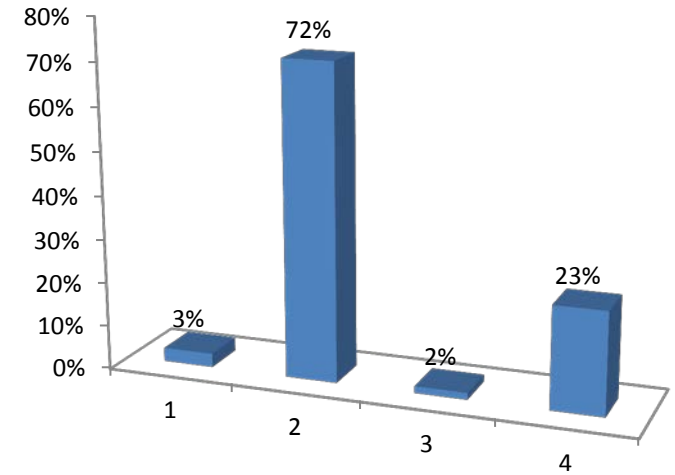
	Responses	
	Percent	Count
Less than a year	2%	1
1-3 years	3%	2
4-10 years	9%	6
11-20 years	27%	17
20+ years	41%	26
I do not live in Northern NJ	2%	1
Prefer not to answer	17%	11
Totals	100%	64





16.) Do you rent or own your home? (Multiple Choice)

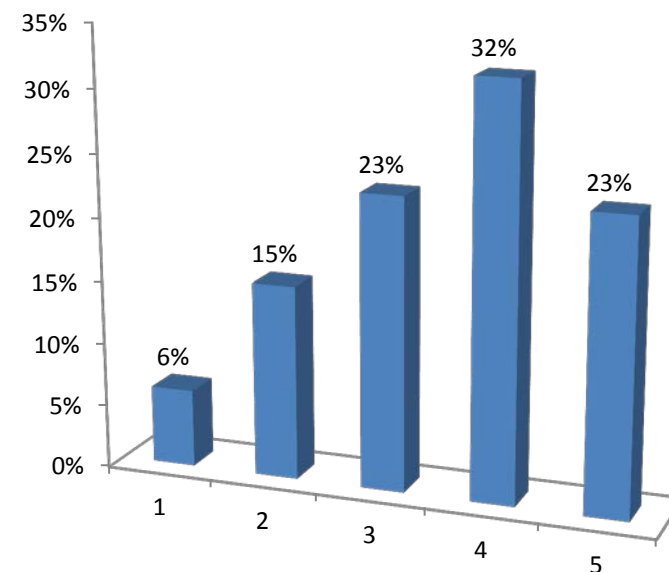
	Responses	
	Percent	Count
Rent	3%	2
Own	72%	46
Residence is provided by others	2%	1
Prefer not to answer	23%	15
Totals	100%	64





17.) How many vehicles are kept at your home for your household's use? (Multiple Choice)

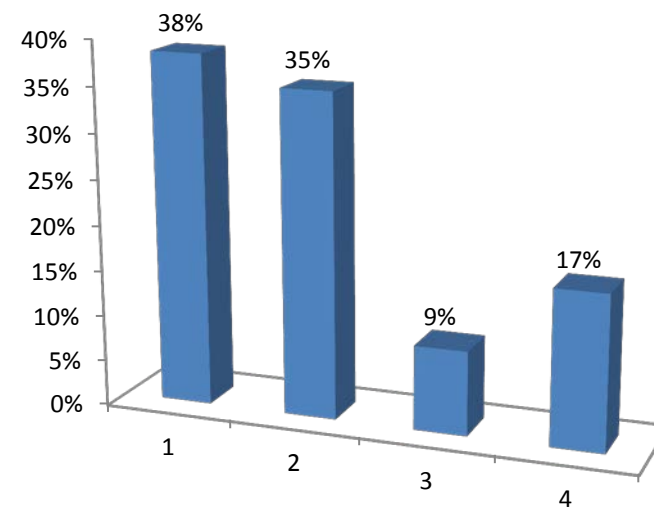
	Responses	
	Percent	Count
No vehicles	6%	4
1 vehicle	15%	10
2 vehicles	23%	15
3+ vehicles	32%	21
Prefer not to answer	23%	15
Totals	100%	65

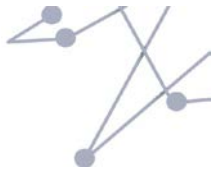




18.) Are you....? (Multiple Choice)

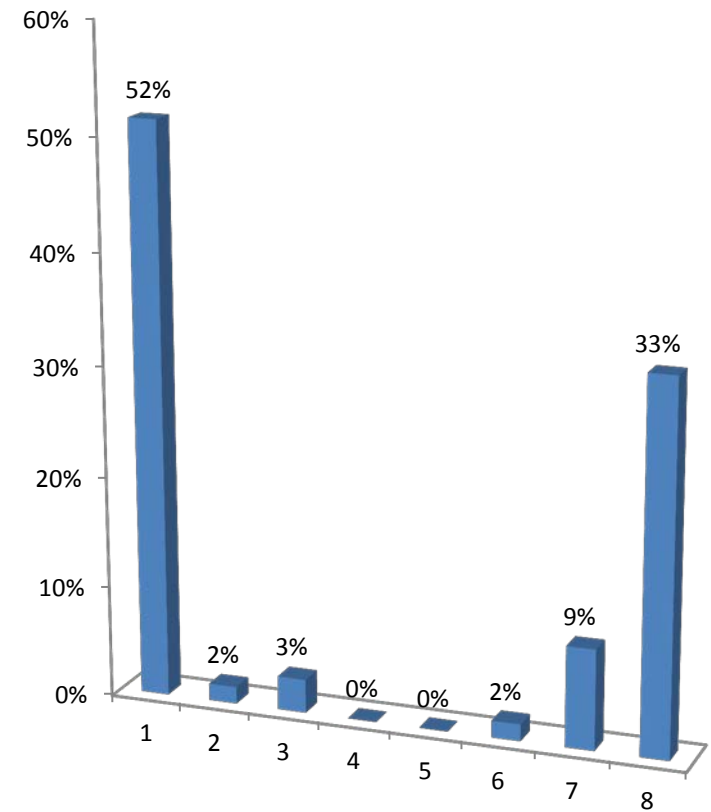
	Responses	
	Percent	Count
Male	38%	25
Female	35%	23
Other	9%	6
Prefer not to answer	17%	11
Totals	100%	65

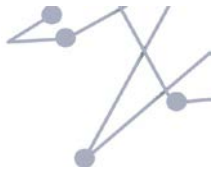




19.) What race or ethnicity best describes you? (Multiple Choice)

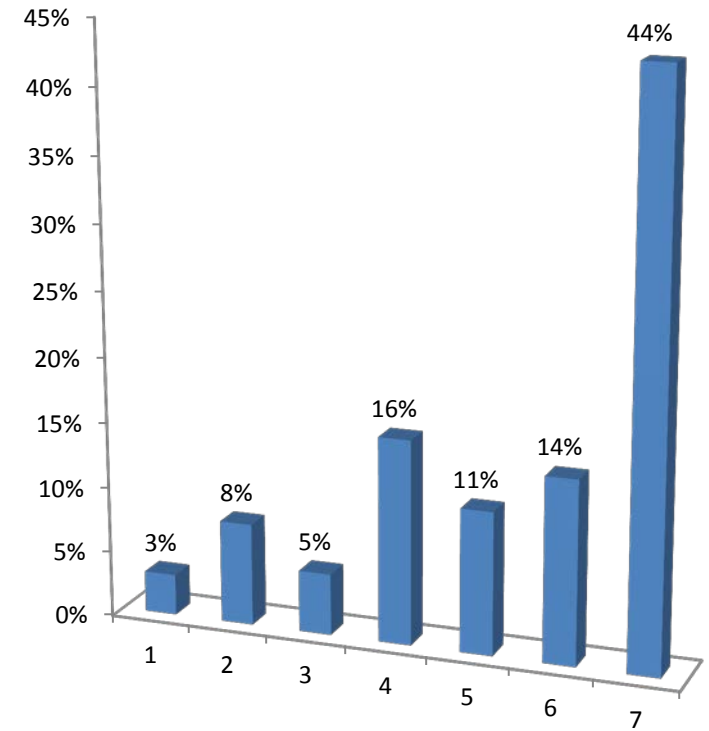
	Responses	
	Percent	Count
White, Not Hispanic	52%	34
Black, Not Hispanic	2%	1
White, Hispanic	3%	2
Black, Hispanic	0%	0
Asian American	0%	0
Native American	2%	1
More than One Race	9%	6
Prefer not to answer	33%	22
Totals	100%	66





20.) What is your household income? (Multiple Choice)

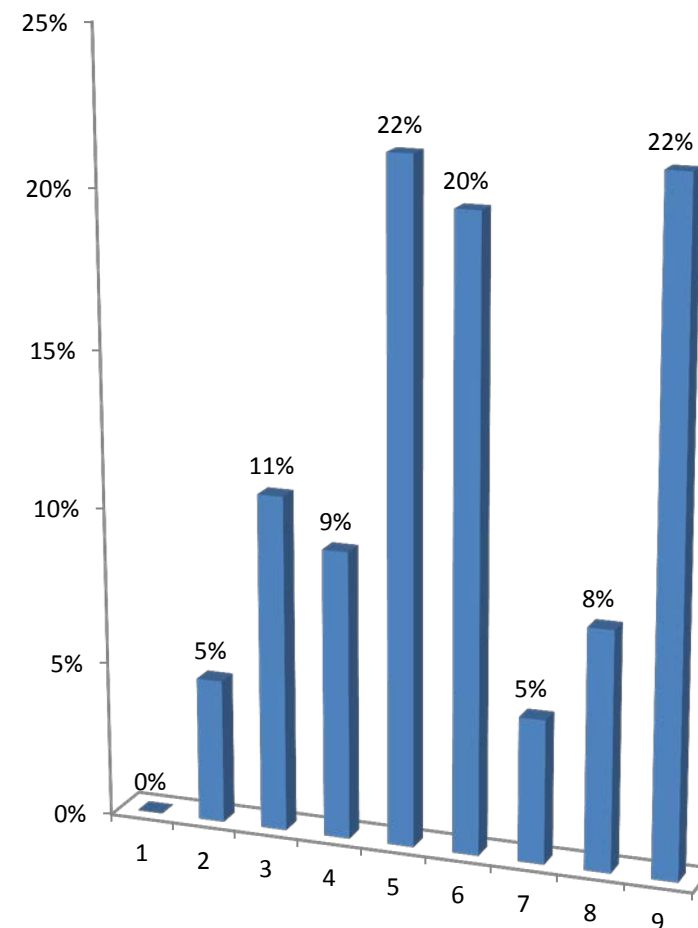
	Responses	
	Percent	Count
\$0 - \$24,999	3%	2
\$25,000 - \$49,999	8%	5
\$50,000 - \$74,999	5%	3
\$75,000 - \$100,000	16%	10
\$101,000 - \$150,000	11%	7
More than \$150,000	14%	9
Prefer not to answer	44%	28
Totals	100%	64





21.) What is the highest degree or level of school completed? (Multiple Choice)

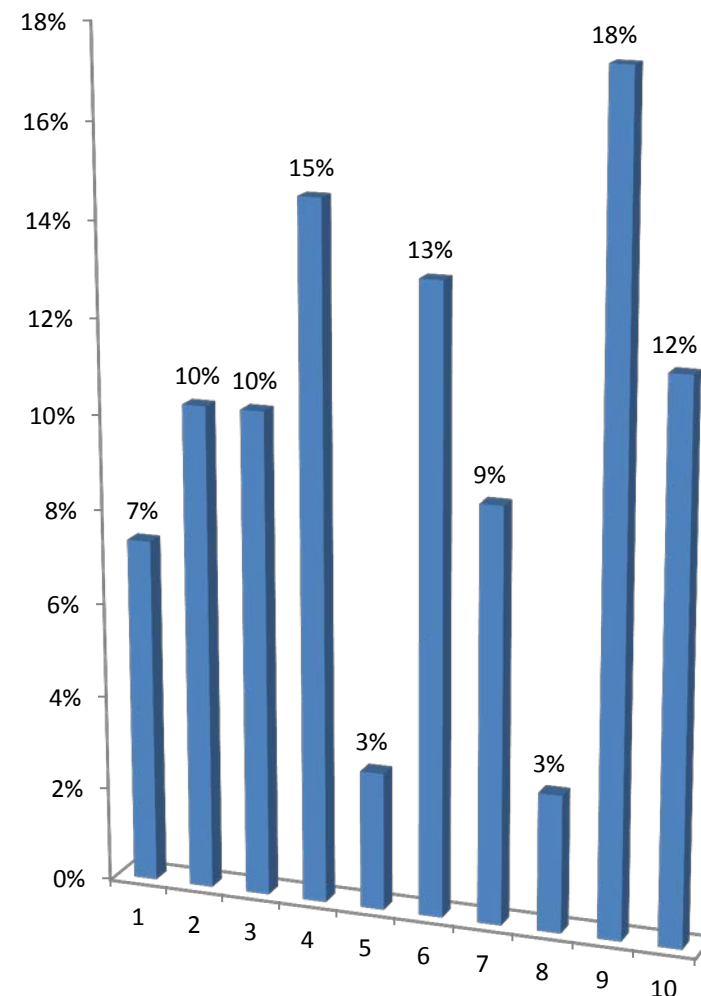
	Responses	
	Percent	Count
Less than High School Diploma or GED	0%	0
High School Graduate	5%	3
Some College	11%	7
Associate's Degree (AA, AS)	9%	6
Bachelor's Degree (BA, BS)	22%	14
Master's Degree	20%	13
Professional Degree beyond Bachelor's Degree (MD, DDS, DVM, LLB, JD)	5%	3
Doctorate Degree (PhD or EdD)	8%	5
Prefer not to answer	22%	14
Totals	100%	65





22.) How did you hear about tonight’s meeting? (Multiple Choice - Multiple Response)

	Responses	
	Percent	Count
Together North Jersey email/website	7%	5
NJTPA email/website	10%	7
County/city email/website	10%	7
Print newspaper	15%	10
Online newspaper	3%	2
Community group or organization	13%	9
Family, friend, or associate	9%	6
Flyer posted at library, senior center or government building	3%	2
Other	18%	12
Prefer not to answer	12%	8
Totals	100%	68





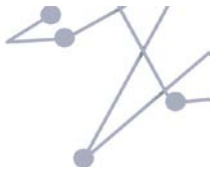
Appendix H: Unreadable Public Input Responses

Session Name: Sussex County, 5/13/13

LIVE: Like

Orientation of people & business
to agriculture
Like town
Beautiful to ride through

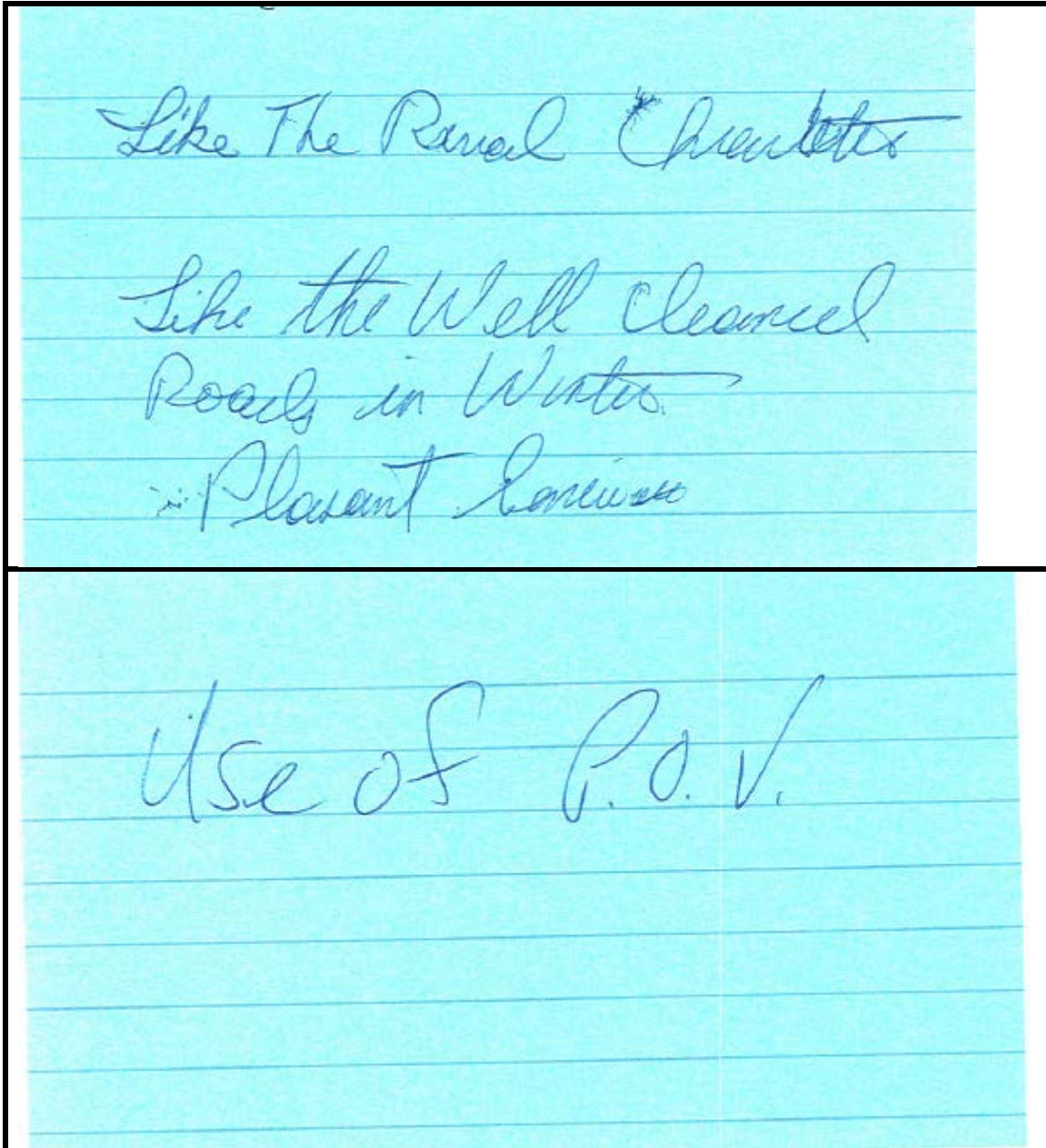
Like openness
friendliness
interesting people
good schools
great houses of worship in
so many denominations
Landscapes spiritually
uplifting



Appendix H: Unreadable Public Input Responses

Session Name: Sussex County, 5/13/13

GETTING AROUND: Like

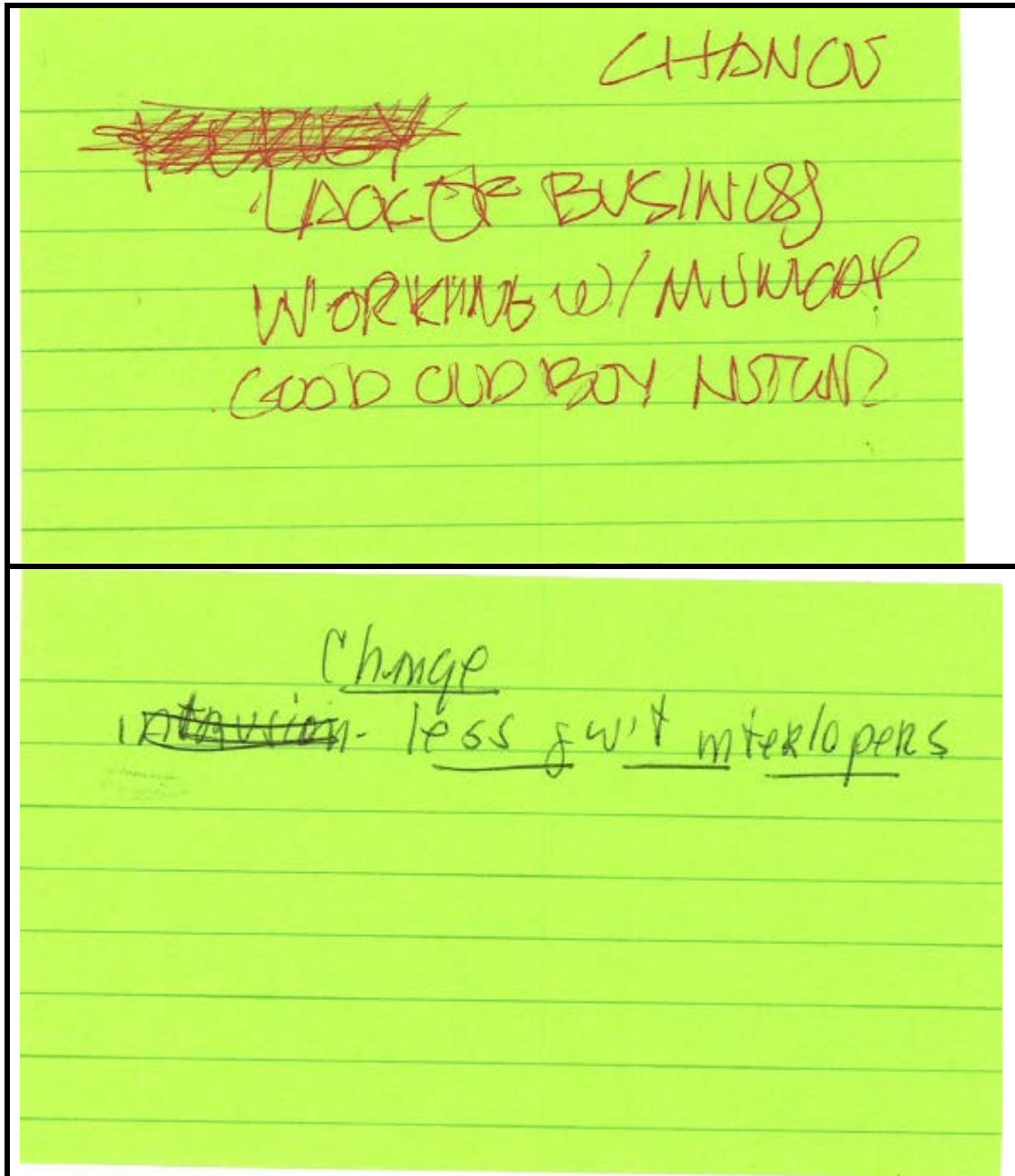


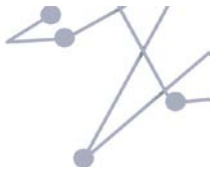


Appendix H: Unreadable Public Input Responses

Session Name: Sussex County, 5/13/13

WORK: CHANGE





Appendix H: Unreadable Public Input Responses

Session Name: Sussex County, 5/13/13

GETTING AROUND: Change

DIS LKO
TRADITIONAL LIBRARY
LESS GOVERNMENT

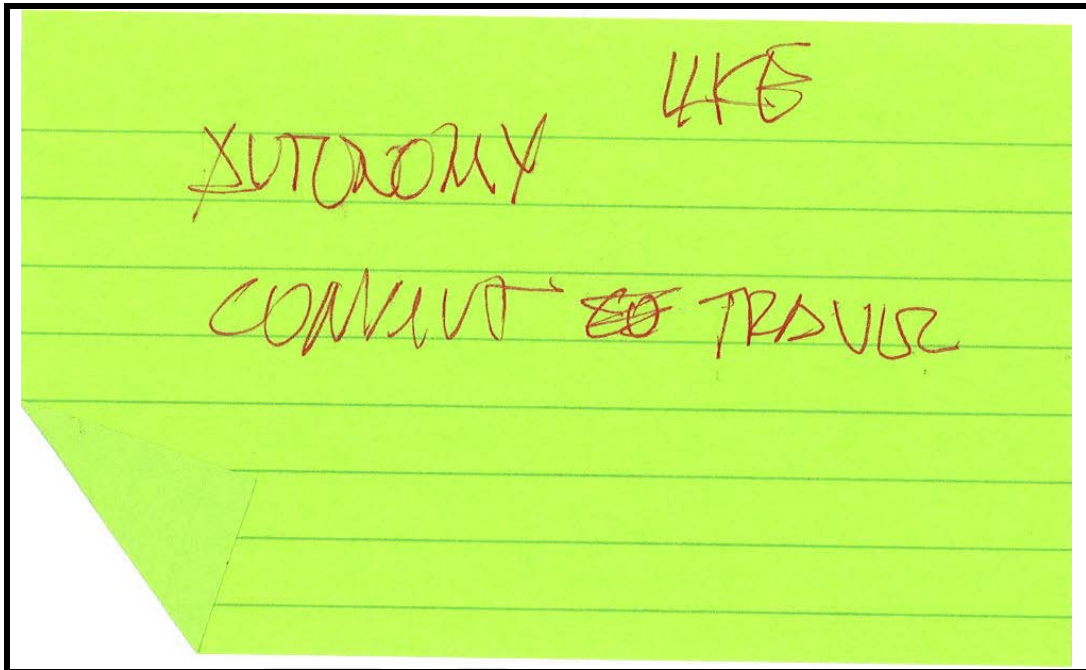
DIS
NO TRAFFIC
INDIVIDUAL



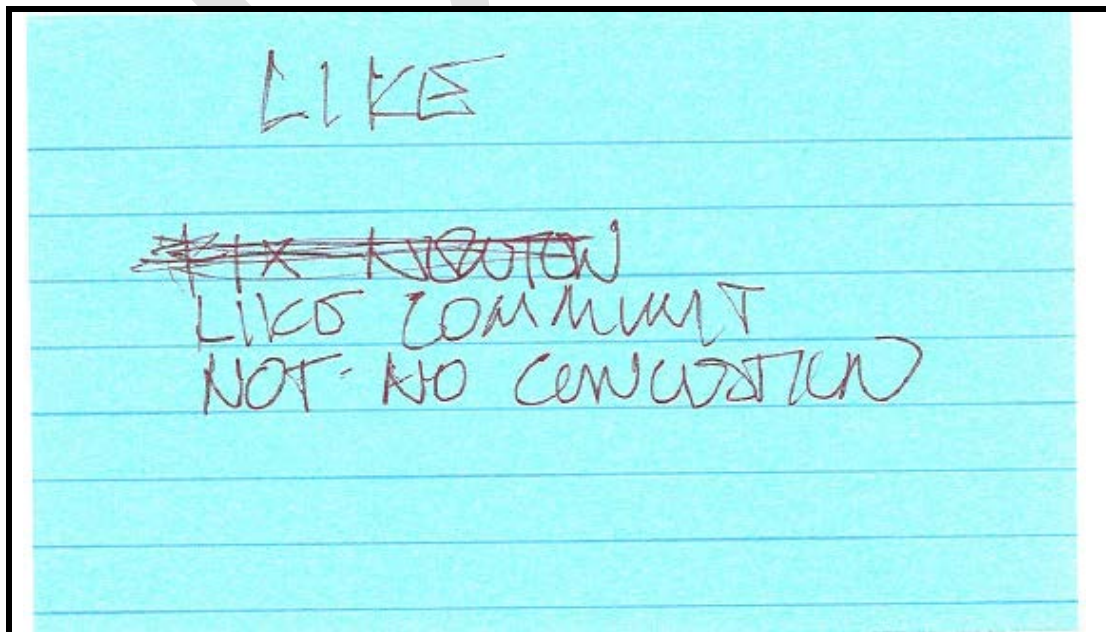
Appendix H: Unreadable Public Input Responses

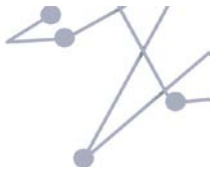
Session Name: Sussex County, 5/13/13

WORK: Like



GETTING AROUND: Like





Appendix H: Unreadable Public Input Responses

Session Name: Sussex County, 5/13/13

LIVE: Change

Town should never
had become involved
in "Sustainable". In
2006 that was eminent
domain business/homes
& by undeveloped pit in
road for 7 years = Lost jobs
& more hopes

- High level death held in
planning - water in
- Water resources taken without
compensation
- STATE GOVT = strong hold on
development



Appendix H: Unreadable Public Input Responses

Session Name: Sussex County, 5/13/13

LIVE: Change

