



## Workshop Summary

### Somerset County Discovery Workshop

#### Somerset County Vocational & Technical Institute – Bridgewater

Tuesday, March 12, 2013

#### BACKGROUND

During the months of February through May 2013, **Together North Jersey (TNJ)** and the **North Jersey Transportation Planning Authority (NJTPA)** jointly convened a series of 14 public outreach workshops. The purpose of the workshops was to gather input from local officials, residents and businesses about what it is like to live, work and get around northern New Jersey and how we can work together to ensure prosperous future for the northern part of the state. The workshops were convened in support of two concurrent planning processes that are described in more detail below.

#### About Together North Jersey

Together North Jersey is a voluntary partnership of jurisdictions, organizations, businesses, educational institutions, and agencies in the 13-county NJTPA planning region (See Figure 1) that have agreed to work together to develop a long-range action plan to address the challenges facing the region. In November 2011, the U.S. Department of Housing and Urban Development awarded **Together North**

**Jersey a \$5 million Sustainable Communities Regional Planning Grant.** The grant is matched with an additional \$5 million in leveraged funds from project partners. Grant funds will be used to: 1) develop a Regional Plan for Sustainable Development (RPSD) for the 13-county planning region; 2) implement up to 18 local demonstration projects; and 3) provide technical assistance and offer capacity-building opportunities that include: a program of educational conference, workshops and webinars as well as to two capacity-building grant programs – one for counties and cities participating on the steering committee and a second for non-governmental organizations (NGOs) to become involved in the regional planning process.

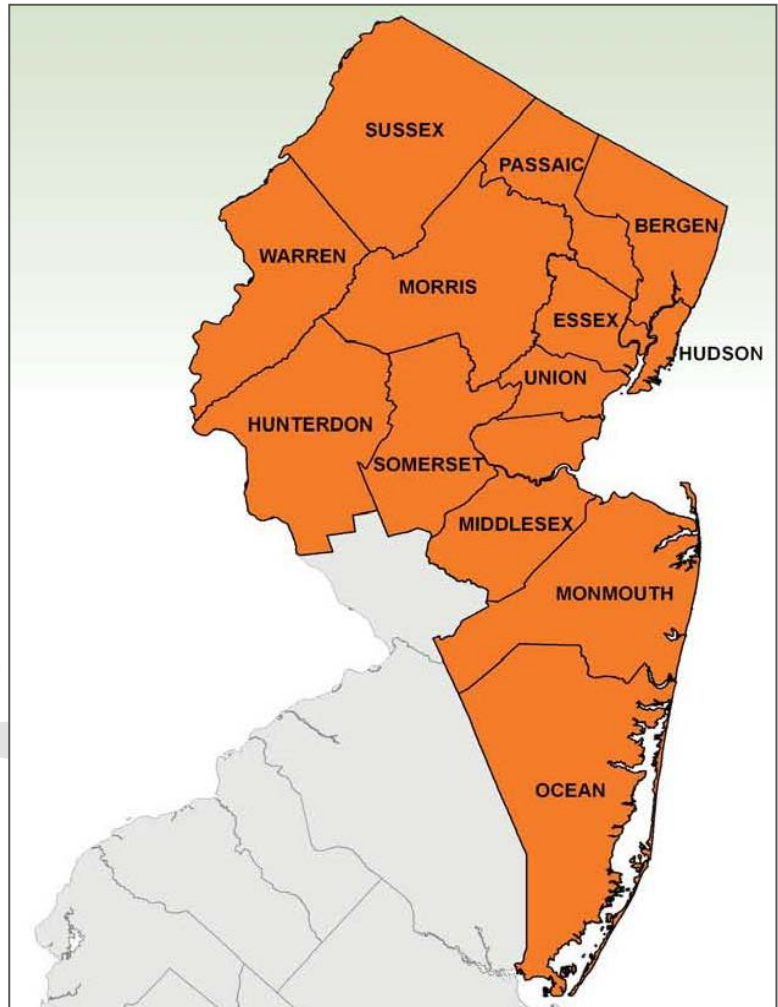


Figure 1: The NJTPA and Together North Jersey Planning Region



### The Together North Jersey RPSD Planning Process

The **Together North Jersey** RPSD planning process will engage officials at multiple levels of government, businesses, non-governmental organizations, other stakeholders and the general public in a strategic planning process designed to address the challenges facing the region. The planning process is divided into three phases designed to explore existing conditions and trends, consider different scenarios for future growth and development and develop a detailed action plan for achieving the region's vision and goals (See Figure 2).

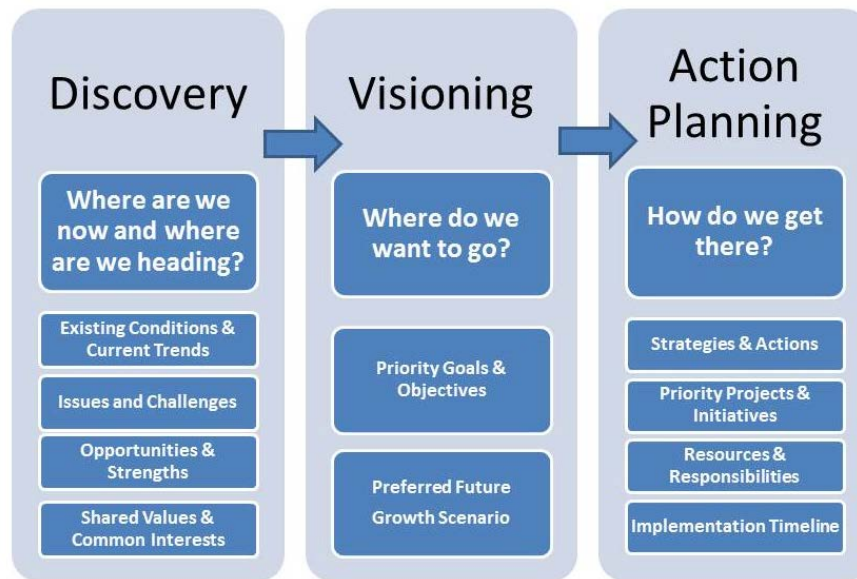


Figure 2: Together North Jersey RPSD Planning Process

### About the NJTPA

The NJTPA is the federally authorized Metropolitan Planning Organization (MPO) for 6.6 million people in the 13-county northern New Jersey region. Each year, the NJTPA oversees more than \$2 billion in transportation improvement projects and provides a forum for interagency cooperation and public input into funding decisions. It also sponsors and conducts studies, assists county planning agencies and monitors compliance with national air quality goals.

### NJTPA's Regional Transportation Plan

NJTPA's current Regional Transportation Plan (RTP), **Plan 2035**, was adopted in 2009. Under federal law, MPOs like the NJTPA are required to update their long range plans every four years as a condition for the receipt of federal transportation funding. NJTPA is currently in the process of updating **Plan 2035**. The updated plan (**Plan 2040**) is scheduled for adoption by fall 2013. It will lay out the vision for development of the transportation system through 2040 and serve as a transportation investment guide for the region. Preparation of **Plan 2040** is being closely coordinated with the Together North Jersey RPSD planning process.



## **“DISCOVERY” WORKSHOP PURPOSE, OBJECTIVES AND AGENDA**

As stated above, the purpose of the Discovery workshops was to gather input from local officials, residents and businesses about what it is like to live, work and get around northern New Jersey and how we can work together to ensure prosperous future for the northern part of the state. The more specific objectives of the workshops were to:

1. Introduce Together North Jersey to local government (county and municipal) officials, stakeholders and the general public throughout the region.
2. Provide meeting participants with information about the RPSD and RTP planning processes.
3. Provide meeting participants with information about current conditions and trends related to the topic areas to be addressed in the planning process.
4. Solicit and obtain input related to the following:
  - What do people like most about their communities/region?
  - What might people like to change if they could?
  - What aspects of personal growth and well-being, family, community, nature, education, safety and security are most important to people in the region?
  - Which community planning goals and objectives are most important?
  - What are the region’s biggest strengths?
  - What are the biggest challenges facing the region?
  - What transportation challenges and priorities are most important?
  - How should we prioritize transportation investments?

The following brief agenda outlines how the workshops were organized and conducted:

- I. Self-Discovery Open House**
  - a. Sign-in and Refreshments
  - b. Where are you from? Where do you work? Map
  - c. Engage North Jersey website demonstrations
- II. Welcoming Remarks**
  - a. Local elected official
- III. Agenda Overview and Ground Rules**
- IV. Introducing Together North Jersey Presentation**
- V. What’s Important to You Polling Exercise**
- VI. “Listen & Learn” Activity Stations**
  - a. Together North Jersey Q&A (optional)
  - b. NJTPA Regional Transportation Plan
  - c. LIVE
  - d. WORK
  - e. GETTING AROUND
- VII. Wrap Up, Report Back and Closing Remarks**

The sections that follow summarize the input received at the workshop.



## OVERVIEW

The meeting hosted jointly by Together North Jersey and the North Jersey Transportation Planning Authority (NJTPA) scheduled for approximately two-and-a-half hours began at 6:00 p.m. with participants arriving to explore the Open House portion of the workshop. A total of 84 participants attended the meeting, which included a program of the following:

1. Welcoming remarks given by Somerset County Planning Director Bob Bzik;
2. Overviews of the Together North Jersey (TNJ) effort and the NJTPA's Regional Transportation Plan update were presented by Jon Carnegie, Project Director of TNJ and Executive Director of the Alan M. Voorhees Transportation Center at the Bloustein School of Planning and Public Policy, Rutgers University, in plenary;
3. An interactive polling exercise focusing on important challenges and opportunities facing the region,
4. Break-out sessions, rotating through five stations (LIVE, WORK, GETTING AROUND, Together North Jersey and NJTPA/RTP) led by two facilitators from the TNJ project team per station, at the stations participants prioritized goals/objectives and provided input on investment;
5. A wrap-up/report out, given by Jon Carnegie and the station facilitators.

## OPEN HOUSE

### Self-Discovery

As attendees arrived at the workshop, they were asked to sign-in to receive notification of follow-up events. Attendees were also given a program folder, which contained a workshop agenda, copies of all of the presentations, TNJ and NJTPA publications, a passbook to record stamps denoting visits to each of the stations in order to encourage participation and a comment form. Until approximately 6:30 p.m., at their leisure, participants had the option of enjoying a light meal provided by TNJ, visiting the various stations, and/or becoming acquainted with the "EngageNorthJersey.com" site that replicated most of the in-person activities online.

### Map Exercise: "Where are you from?"

After receiving their program folders, attendees were asked to place dots on a map indicating where they lived and where they worked in Somerset County. To view the map, see **Appendix A**.

## WORKSHOP INTRODUCTION

### Welcoming Remarks

An elected official or director of planning of the host jurisdiction of the workshop is invited to provide welcoming remarks. The remarks usually include connection between the Together North Jersey effort and/or the NJTPA work and initiatives of the host jurisdiction. In this workshop, Planning Director Bob Bzik gave welcoming remarks and thanked county staff and the NJTPA for planning and coordinating the workshop. He also recognized other county officials present and encouraged residents to take advantage of the opportunity to share their ideas about the future of the county and the region.



### **Introducing Together North Jersey Presentation**

Together North Jersey Project Director, Jon Carnegie, provided an overview presentation on Together North Jersey that included the following information:

- ***What is Together North Jersey?*** – Together North Jersey is a voluntary partnership of cities, towns, counties, agencies, non-profit organizations and others in northern New Jersey that have agreed to work together with the public to plan for the region's future. Together North Jersey is funded by a Sustainable Communities Regional Planning Grant from U.S. Dept. of Housing and Urban Development.
- ***Why Together North Jersey?*** – Together North Jersey was created to provide a way for local officials, businesses, state and regional agencies, non-profit organizations, other stakeholders and the public to work together to develop a regional action plan to address the many challenges facing the region. These challenges include:
  - Declining prosperity
    - Stagnant/uneven job growth
    - High unemployment
    - Increasing debt delinquencies
    - Declining home values & ownership rates
  - High cost of living
    - Housing affordability
    - Transportation costs
  - Fiscal uncertainty
    - High property taxes
    - Government debt burden
    - Looming service cuts
    - Unfunded maintenance
  - Underperforming Cities
    - Concentration of poverty
    - Public safety issues
    - School quality
  - Long commutes & traffic congestion
  - Environmental & public health concerns
    - Increase in chronic disease
    - Air & water pollution
  - Recovering from recent disasters
  - Changing demographics
  - Shifting real estate market demand





- ***What will Together North Jersey do?*** – Together North Jersey will: 1) undertake an extensive outreach process to figure out what we can do together to address regional challenges; 2) implement up to 40 local planning projects to address local priorities and inform the regional plan; and 3) provide technical assistance and training
- ***Public and Stakeholder Engagement*** – The purpose of Together North Jersey’s public and stakeholder engagement activities is to listen and learn from local officials, residents, business owners and other stakeholders from around the region. Activities will include: interviews and small group meetings; three Together North Jersey Standing Committees that will meet 3-6 times per year; up to 50 public workshops and meetings over 18 months, and the Engage North Jersey website which will collect input from people on-line. The planning process will include three phases that seek to answer the following three questions: Where are we now and where are we heading? Where do we want to go? and, How do we get there?
- ***Regional Trends*** – Zenobia Fields of the NJTPA gave a presentation of demographic trends for Somerset County as well as the region.

DRAFT



## INTERACTIVE POLLING EXERCISE

### “Tell us what is important to you.”

Jon Carnegie led the participants in an interactive polling exercise. Each participant held a remote voting pad and was able to register their votes anonymously. A variety of multiple choice polling questions asked participants to consider what aspects of living in their community and the region they found most important. The top answers can be found in Table-1. For a complete listing of the results, as well as additional questions relating to participant demographics, see **Appendix B**.

**Table-1: Interactive Polling Top Answers**

Question	Top Answer	Percent
Which Personal Growth and Well-Being value is most important to you?	Being healthy and taking care of yourself	49%
Which Family value is most important to you?	Having time to spend together	58%
Which Community value is most important to you?	Being self-reliant and left alone	34%
Which Education value is most important to you?	Having opportunities to keep learning all through life	50%
Which Nature value is most important to you?	Taking good care of our air, water and natural lands	78%
Which Safety and Security value is most important to you?	Having safe neighborhoods	44%
How should the region spend transportation dollars? (Participants were asked to select 3)	Making existing highways work better	17%
	Expanding transit service	17%
	Fixing unsafe bridges	14%
What sources of funds should be used to support transportation?	All of the above	35%

## LISTEN & LEARN ACTIVITY

During the Listen & Learn Activity there were five stations (NJTPA/RTP, LIVE, WORK, GETTING AROUND and TNJ) to rotate through.

- At the **NJTPA/RTP Station**, participants were asked “How do you want to INVEST?,” in terms of transportation funding. This was done by dropping investment beads into jars correlated with particular capital investment categories (i.e. transit expansion, bike/ped, etc.)
- While rotating through the three **Topical Stations (LIVE, WORK, GETTING AROUND)**, participants shared ideas about “What you LIKE or would CHANGE about your community?” Then prioritized goals and objectives through a “Dotmocracy” exercise.
- At the **TNJ Station**, regional coordination goals were discussed and prioritized.



### NJTPA/Regional Transportation Plan (RTP) Station: Transportation Investment

At this station, participants heard from NJTPA staff about the current Regional Transportation Plan update. Current Federal transportation investments are represented by percent in pie chart Figure 3-A. Participants at the Somerset County workshop were asked to select three top priorities within the current investment categories. A total of 51 people participated in the RTP exercise. Their desired investments are displayed in the pie chart Figure 3-B.

Figure 3-A: Current Federal Transportation Investments

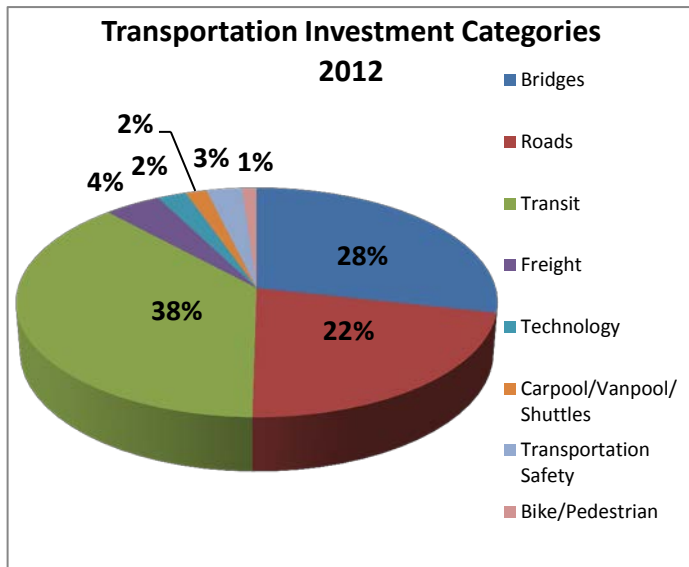
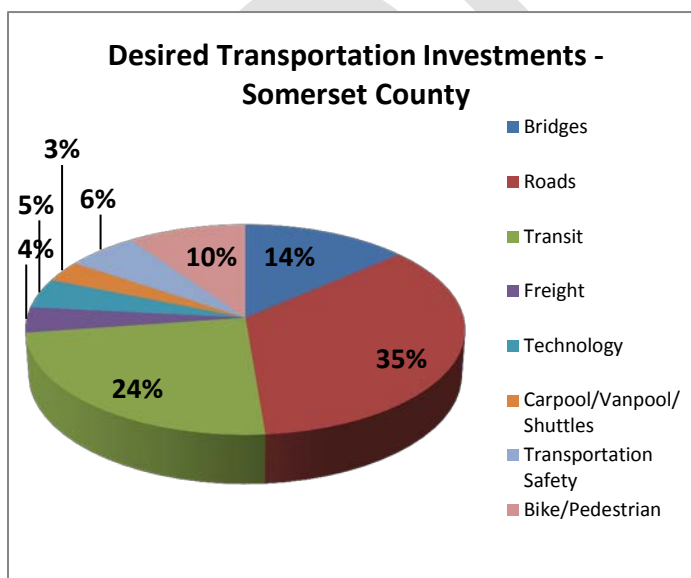
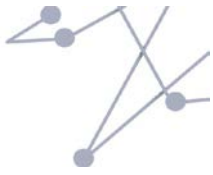


Figure 3-B: Desired Transportation Investments







### **Topical Station: Summary of Public Input**

At the LIVE, WORK and GETTING AROUND station rotations, participants were asked two questions: “What do you like about where you live/work/or about how you get around your community?” And, “What would you like to change about where you live/work/or about how you get around your community?” Participants were asked to share the answers to these questions with someone sitting next to them. Answers were recorded on post-it notes.

At the three stations, after participants shared their “like” and “change,” several attendees reported aloud the responses they heard and discussed. The post-it notes were collected and each response was recorded. Below is a summary of the top ideas that emerged. (See **Appendix C** for a complete list of participants’ answers.)

In the **LIVE** station, people expressed appreciation of the small community, quiet neighborhoods, and access to open space. “Like” statements included:

- Rural environment
- Access to preserved open space
- Beauty of the neighborhood
- Suburban feel - private houses, a little bit of land, quiet street

In the **WORK** station, people shared that they like their ease of travel to and from work and the availability of local work opportunities. “Like” statements included:

- Close - short commute
- Able to live close to where I work
- Presence of quality firms with good jobs
- Sense of community within local small business

In the **Getting Around** station, attendees like having the ability to drive a car easily around the area, while also appreciating the transit options and having access to New York City. “Like” statements included:

- Freedom of mobility
- Independent driving
- Good/accessible road system
- Mass transit available. Many major highways.

In the **LIVE** station, many participants expressed the desire to change taxes, while also mentioning improving housing affordability and choice, and having more walkable main street areas. “Change” statements included:

- Taxes too high
- Affordable homes and housing
- Better tax structure
- More walkable communities (i.e. work, shopping, recreation)



In the **WORK** station, participants expressed a need to attract more businesses to the county, both to provide more jobs and to help share the tax burden. At the same time, making sure businesses are not overtaxed. In addition, participants expressed a need for more job training and transit options to work. “Change” statements included:

- Need more opportunities for new businesses to move into NJ
- More vocational training
- Government involvement in the marketplace
- Need to attract more business to help lower real estate taxes

In the **Getting Around** station, attendees expressed a need to prioritize pedestrian and transit options, and for better maintenance of roadways in the county. “Change” statements included:

- More public transit and more pedestrian access
- Better road maintenance needed
- Better transportation for more rural communities
- Access to public transit, connecting transportation to housing and jobs

### **Priority Objectives**

At the LIVE, WORK and GETTING AROUND stations, participants were asked to review the draft Goals and Objectives for the Regional Plan for Sustainable Development. After reviewing these, participants were asked to identify any missing objectives by writing them on a post-it and adding them to the listed objectives. A list of the missing objectives that participants identified is cataloged in **Appendix D**.

Next, participants were asked to rank the objectives within the goals, including any added objectives from the attendees. Each participant was able to vote for a total of three objectives, prioritizing them as “Most Important,” “Very Important,” and “Important.” The votes were weighted according to priority, and a point system tracked the prioritized objectives accordingly. **Table - 2** displays the Goals and Objectives with the station totals and overall totals. For a complete list of the responses, see **Appendix E**.

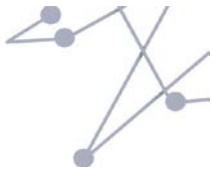


**Table-2: Priority Goals and Objectives Summary – Somerset County\***

Goals and Objectives	LIVE Points	WORK Points	GETTING AROUND Points	Overall Points
<b>Goal 1 - Strengthen the region's economy</b>	0	0	0	0
Keep & create well-paying jobs	24	19	6	49
Ensure infrastructure (transportation, utilities & communications) is in good repair & can support economic development	7	22	23	52
Increase the economy's ability to adapt to change	0	5	18	23
Increase regional self-sufficiency	3	4	0	7
<b>Goal 2 - Ensure communities are safe, healthy &amp; great places to live</b>	0	0	0	0
Create safe, stable neighborhoods with high-quality housing	4	4	0	8
Improve public health	1	6	2	9
Improve access to local parks & recreation	2	6	4	12
Improve access to community resources such as libraries, senior centers, youth activities	3	2	5	10
Preserve & enhance the character of existing downtowns & neighborhoods	23	17	6	46
Improve access to arts & cultural resources	5	10	0	15
<b>Goal 3 - Improve everyone's access to opportunity</b>	0	0	0	0
Connect where people live with where they need to go	5	4	14	23
Maintain & improve the quality of schools	5	3	0	8
Create inclusive, mixed-income neighborhoods	3	0	3	6
Reduce combined transportation & housing costs	2	2	4	8
<b>Goal 4 - Enhance efficiency &amp; conserve land</b>	1	0	0	1
Increase investment near existing housing, jobs & transportation	2	3	4	9
Maintain & expand vibrant downtowns & "main streets"	7	13	3	23
Encourage development of compact neighborhoods with a mix of housing, shopping & services	9	12	8	29
<b>Goal 5 - Protect &amp; enhance environment</b>	0	0	0	0
Preserve open space & natural areas	8	8	10	26
Improve air quality	0	0	5	5
Reduce potential impacts of climate change	12	7	3	22
Increase ability to respond to and recover from extreme weather	14	6	3	23
Ensure adequate water supply	10	2	1	13
Improve water quality	1	0	4	5
Direct development away from environmentally sensitive areas	11	6	1	18
Preserve wildlife habitat	2	0	0	2
<b>OTHER - Objectives added by participants</b>				0
Entrepreneurship	0	15	0	15
Lower taxes for businesses	0	13	0	13
Expanding and maintaining roads into suburban communities.	0	0	17	17
Connecting transportation, housing and jobs	0	0	14	14

#'s = Indicates top five Objectives selected by participants.

\*See Appendix D for missing Objectives that received points.



At the **LIVE** station, the objective: “Keep and create well-paying jobs” was the top objective (receiving 24 points). Closely following as the second priority was the objective “Preserve and enhance the character of existing downtowns and neighborhoods” (with 23 points), and the third priority was the objective “Increase ability to respond to and recover from extreme weather events” (receiving 14 points).

At the **WORK** station, the top objective was “Ensure infrastructure (transportation, utilities and communications) is in good repair and can support economic development” (receiving 22 points), followed by the second objective “Keep and create well-paying jobs” (with 19 votes), and the third priority was the objective “Preserve and enhance the character of existing downtowns and neighborhoods” (with 17 points).

At the **Getting Around** station, the top objective was “Ensure infrastructure (transportation, utilities and communications) is in good repair and can support economic development” (with a total of 23 points). The second objective was “Increase the economy’s ability to adapt to change” (receiving 18 points), and the third prioritized objective was an added objective from an attendee “Expanding and maintaining roads into suburban communities” (with 17 points).

#### **TNJ Station: Regional Coordination**

At the Together North Jersey Station, 62 attendees participated in a “Dotmocracy” exercise to identify a top regional objective. The Objective with the majority of votes was, “Respect property rights during planning and implementation.” For a list of all the regional objectives and results, see **Appendix F**.

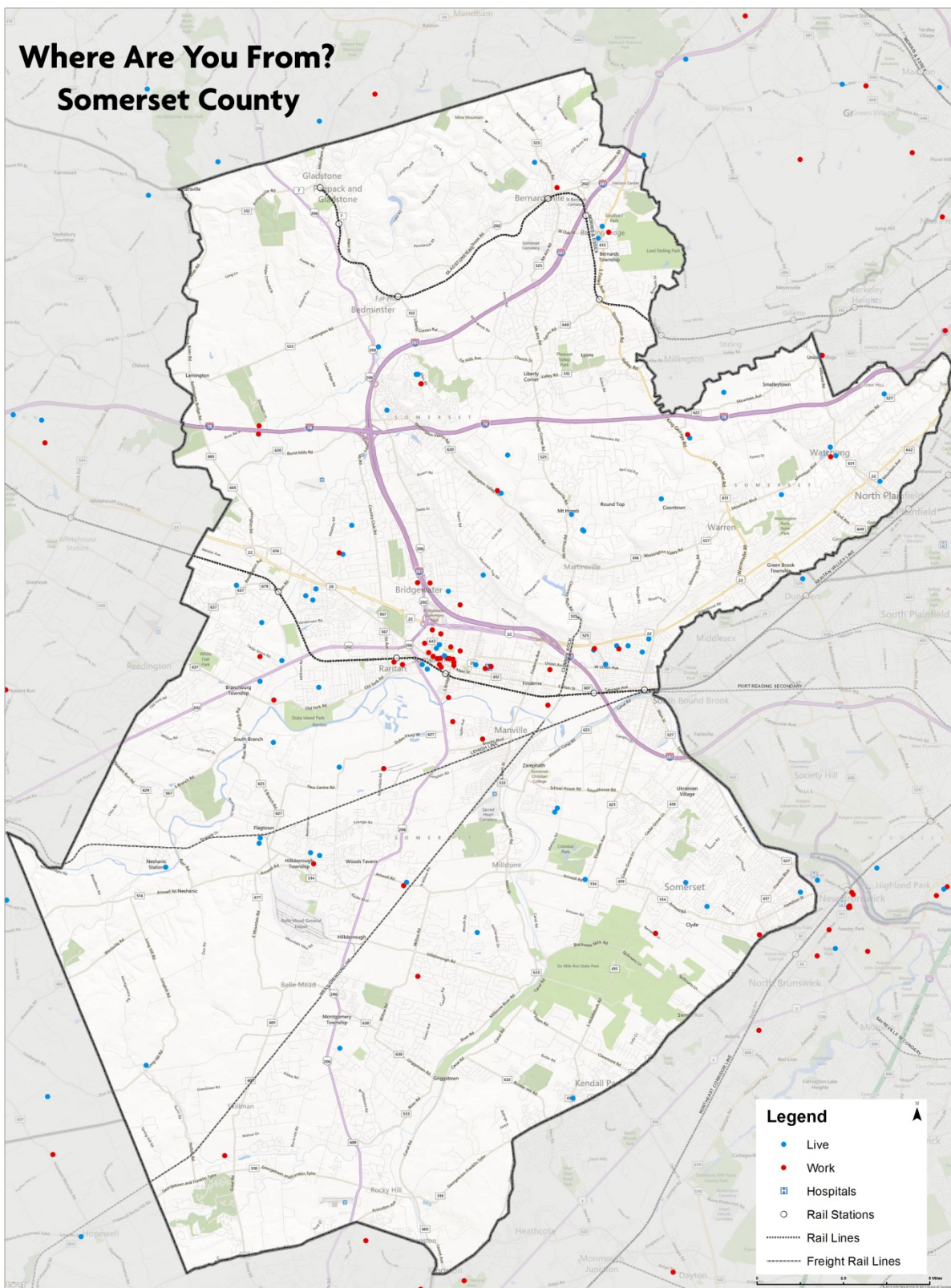
#### **WRAP UP, REPORT BACK & CLOSING REMARKS**

The meeting concluded with a wrap-up given by Jon Carnegie and a report back from each of the station facilitators. Participants were encouraged to continue contributing to the regional discussion by visiting the “EngageNorthJersey.com” website.





## Appendix A: Map





## Appendix B: Interactive Polling

**Session Name:** Somerset County 3-12-2013 10:04 PM

**Date Created:** 3/12/2013 5:30:32 PM

**Active Participants:** 75 of 75

**Average Score:** 0.00%

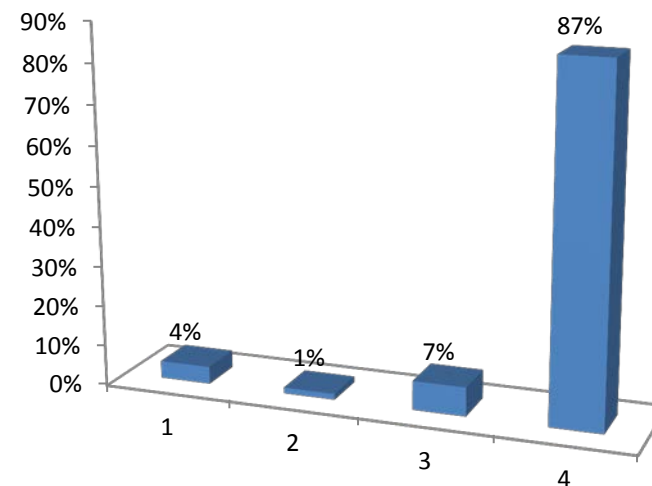
**Questions:** 20

## Results By Question

### **PRACTICE QUESTION**

1.) "Jersey Shore" is must-see TV. (Multiple Choice)

	Responses	
	Percent	Count
Strongly Agree	4%	3
Somewhat Agree	1%	1
Somewhat Disagree	7%	5
Strongly Disagree	87%	60
<b>Totals</b>	<b>100%</b>	<b>69</b>

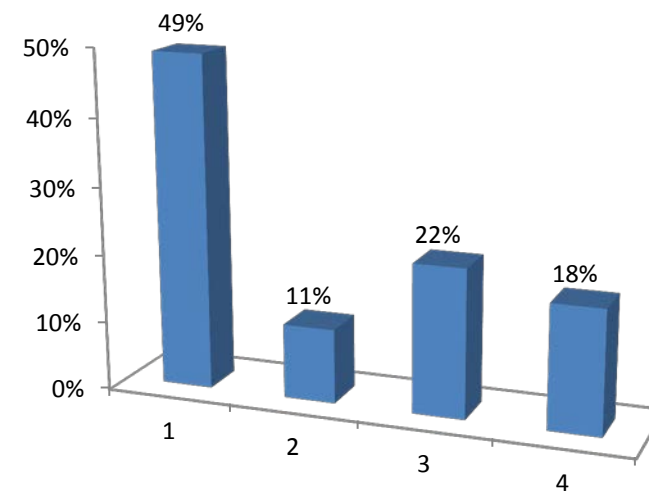


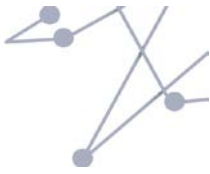




2.) Which Personal Growth and Well-Being value is most important to you? (Multiple Choice)

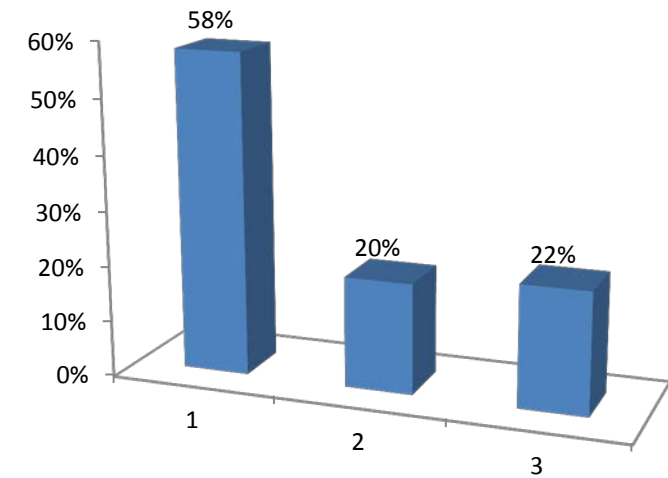
	Responses	
	Percent	Count
Being healthy and taking care of yourself	49%	27
Being close to nature	11%	6
Volunteering and giving back to your community	22%	12
Spirituality and religion	18%	10
<b>Totals</b>	<b>100%</b>	<b>55</b>

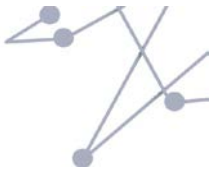




### 3.) Which Family value is most important to you? (Multiple Choice)

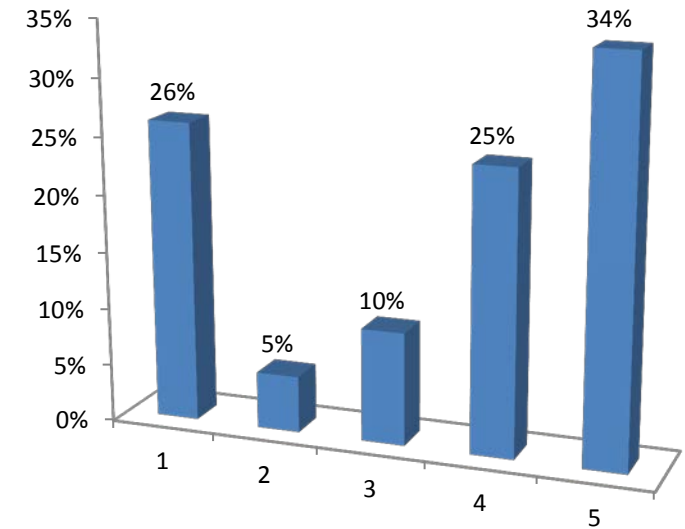
	Responses	
	Percent	Count
Having time to spend together	58%	29
Having extended family nearby	20%	10
Making time for recreational and cultural activities together	22%	11
<b>Totals</b>	<b>100%</b>	<b>50</b>

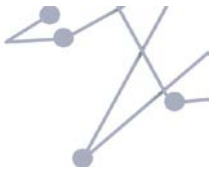




#### 4.) Which Community value is most important to you? (Multiple Choice)

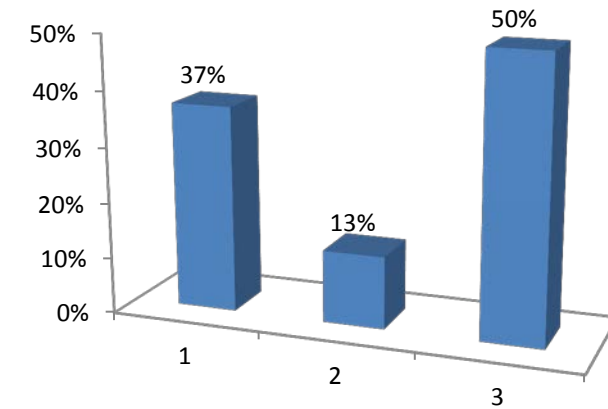
	Responses	
	Percent	Count
Feeling a sense of community	26%	16
Having community-sponsored activities to go to	5%	3
Living in a diverse community	10%	6
Having good neighbors and being a good neighbor	25%	15
Being self-reliant and left alone	34%	21
<b>Totals</b>	<b>100%</b>	<b>61</b>





5.) Which Education value is most important to you? (Multiple Choice)

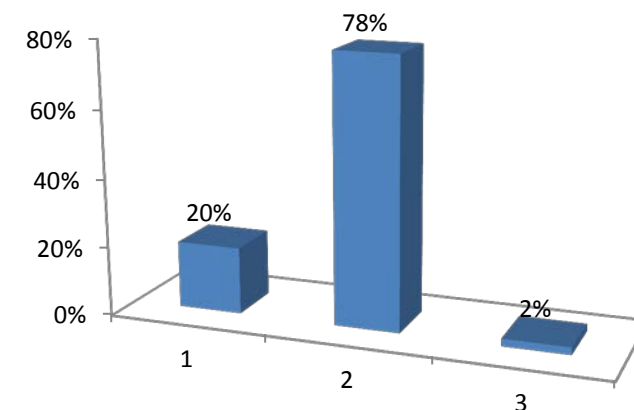
	Responses	
	Percent	Count
Having quality neighborhood schools	37%	20
Being able to go to college or a trade school	13%	7
Having opportunities to keep learning all through life	50%	27
<b>Totals</b>	<b>100%</b>	<b>54</b>





6.) Which Nature value is most important to you? (Multiple Choice)

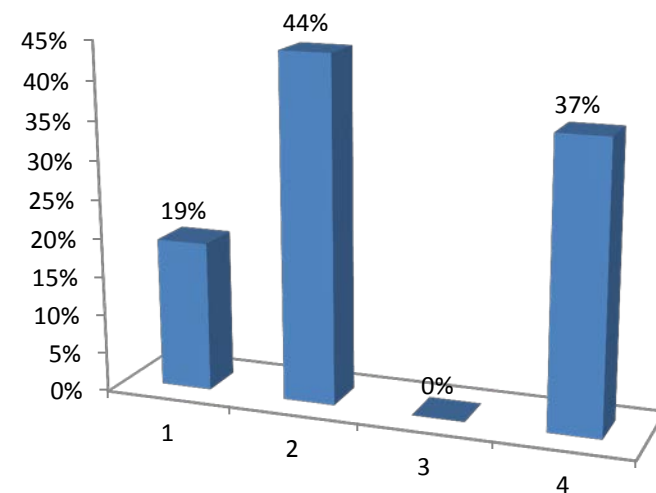
	Responses	
	Percent	Count
Having green space nearby	20%	9
Taking good care of our air, water and natural lands	78%	36
Protecting wildlife habitat	2%	1
<b>Totals</b>	<b>100%</b>	<b>46</b>





**7.) Which Safety and Security value is most important to you? (Multiple Choice)**

	Responses	
	Percent	Count
Having a good paying job	19%	10
Having Safe neighborhoods	44%	23
Fewer traffic-related accidents	0%	0
Peace of mind about the future	37%	19
<b>Totals</b>	<b>100%</b>	<b>52</b>

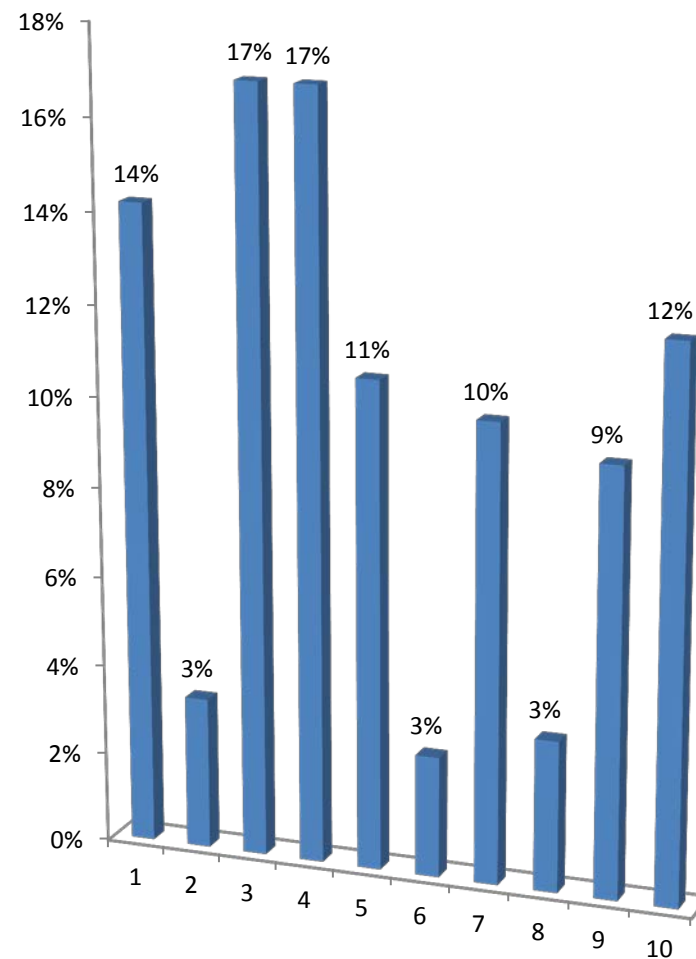


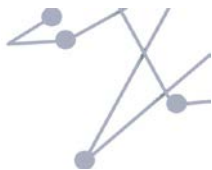




**8.) How should the region spend transportation dollars? (select three) (Multiple Choice - Multiple Response)**

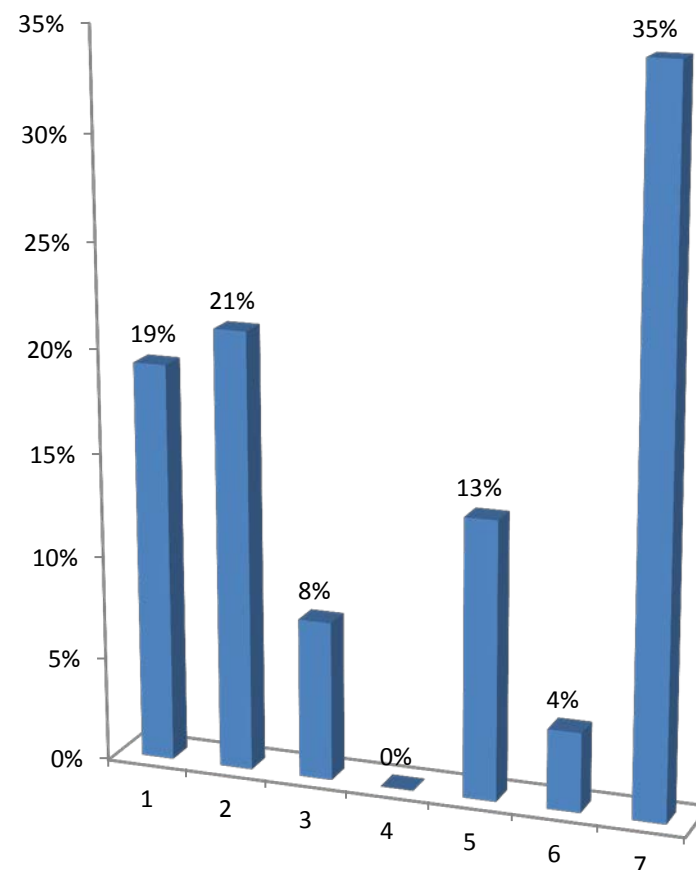
	Responses	
	Percent	Count
Fixing unsafe bridges	14%	21
Building more highways	3%	5
Making existing highways work better	17%	25
Expanding transit service	17%	25
Making existing transit work better	11%	16
Making it easier to transport goods and materials around the region	3%	4
Using technology to improve transportation	10%	15
Supporting more carpooling and shuttles	3%	5
Making our roads safer	9%	14
Making it easier to walk and bike where we need to go	12%	18
<b>Totals</b>	<b>100%</b>	<b>148</b>





9.) What sources of funds should be used to support transportation? (Multiple Choice)

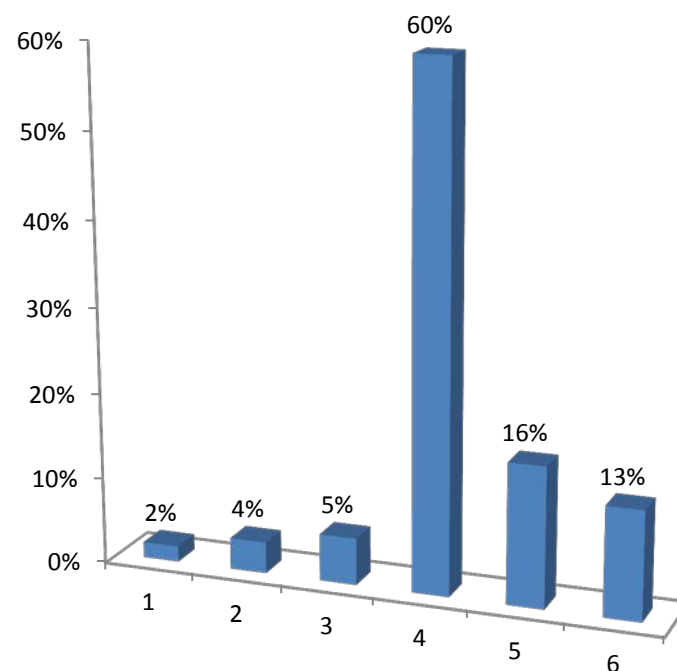
	Responses	
	Percent	Count
Transit fares and tolls	19%	10
Gas taxes	21%	11
General taxes like income tax or sales tax	8%	4
Borrowing more money and paying it off over time	0%	0
Selling “naming” rights to bridges, highways and train stations like we do with stadiums and arenas	13%	7
Working with banks and businesses to share costs and revenue from tolls and fares	4%	2
All of the above	35%	18
<b>Totals</b>	<b>100%</b>	<b>52</b>





10.) Which group best describes your age? (Multiple Choice)

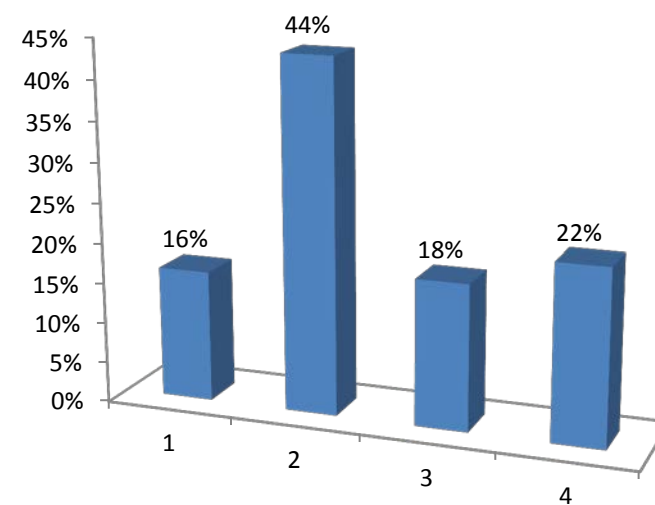
	Responses	
	Percent	Count
Under 25	2%	1
25-34	4%	2
35-44	5%	3
45-64	60%	33
65-74	16%	9
75 years and older	13%	7
<b>Totals</b>	<b>100%</b>	<b>55</b>





**11.) What is your household size? (include yourself) (Multiple Choice)**

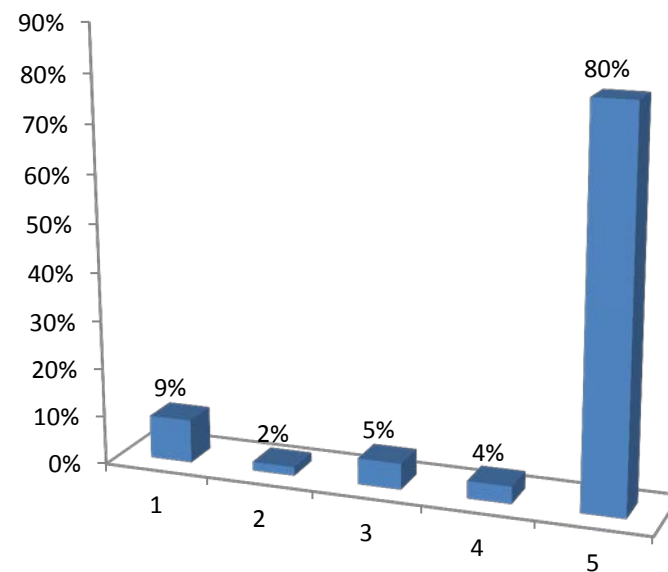
	Responses	
	Percent	Count
1 person household	16%	9
2 person household	44%	24
3 person household	18%	10
4 or more person households	22%	12
<b>Totals</b>	<b>100%</b>	<b>55</b>

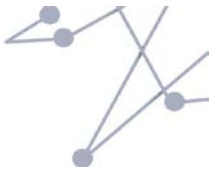




12.) How many persons in your household are under the age of 18? (Multiple Choice)

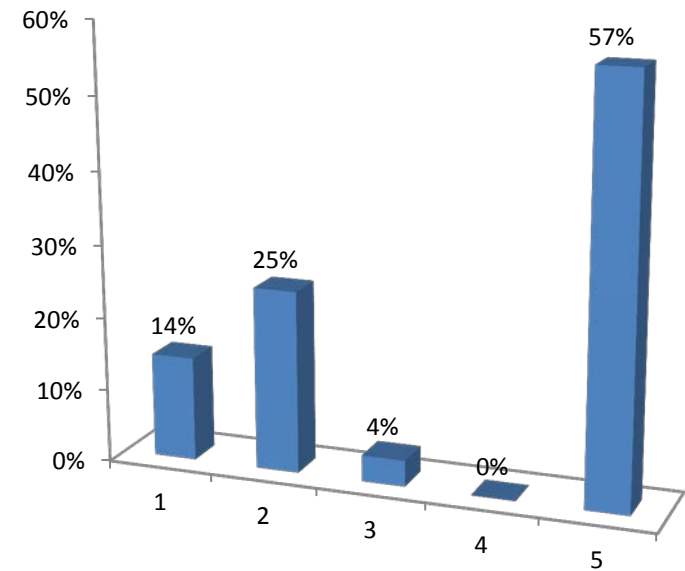
	Responses	
	Percent	Count
One (1)	9%	5
Two (2)	2%	1
Three (3)	5%	3
Four or more (4+)	4%	2
None	80%	45
<b>Totals</b>	<b>100%</b>	<b>56</b>



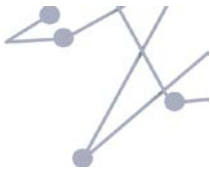


13.) How many persons in your household are over the age of 65? (Multiple Choice)

	Responses	
	Percent	Count
One (1)	14%	8
Two (2)	25%	14
Three (3)	4%	2
Four or more (4+)	0%	0
None	57%	32
<b>Totals</b>	<b>100%</b>	<b>56</b>

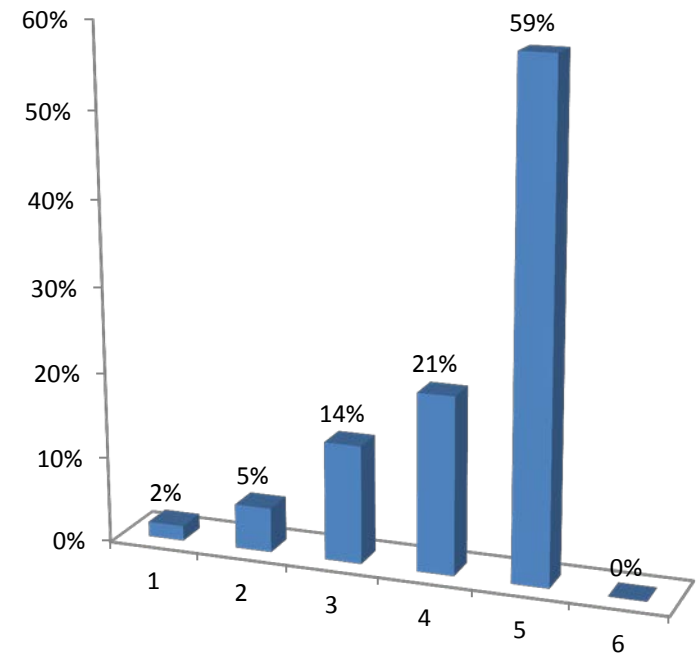


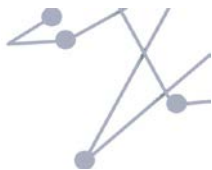




**14.) How long have you lived in your current neighborhood? (Multiple Choice)**

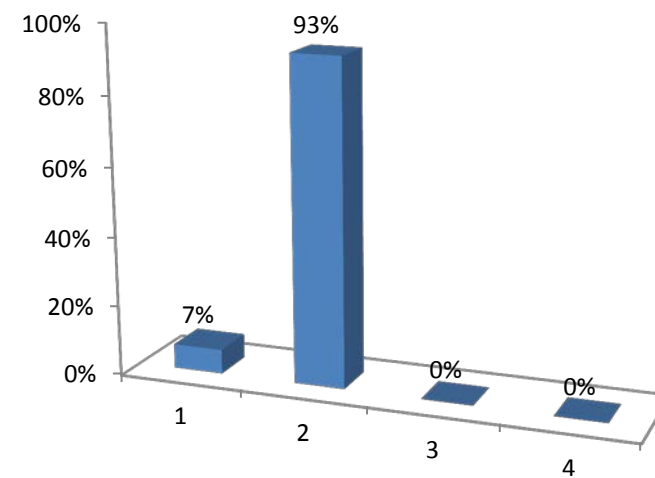
	Responses	
	Percent	Count
Less than a year	2%	1
1-3 years	5%	3
4-10 years	14%	8
11-20 years	21%	12
20+ years	59%	34
I do not live in Northern NJ	0%	0
<b>Totals</b>	<b>100%</b>	<b>58</b>





### 15.) Do you rent or own your home? (Multiple Choice)

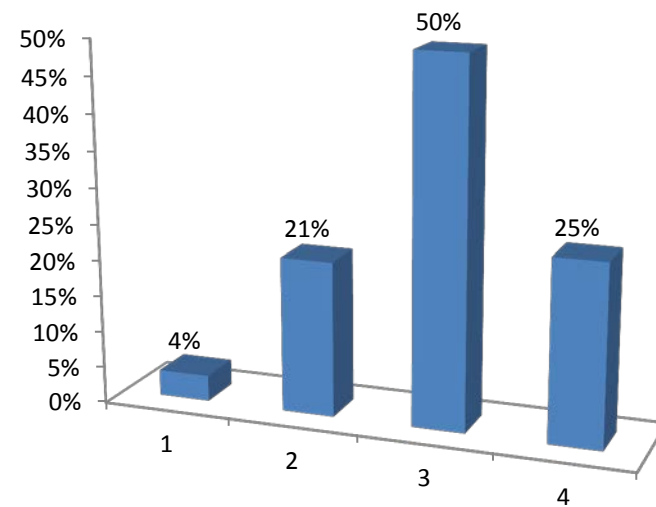
Responses		
	Percent	Count
Rent	7%	4
Own	93%	53
Residence is provided by others	0%	0
Prefer not to answer	0%	0
<b>Totals</b>	<b>100%</b>	<b>57</b>





16.) How many vehicles are kept at your home for your household's use? (Multiple Choice)

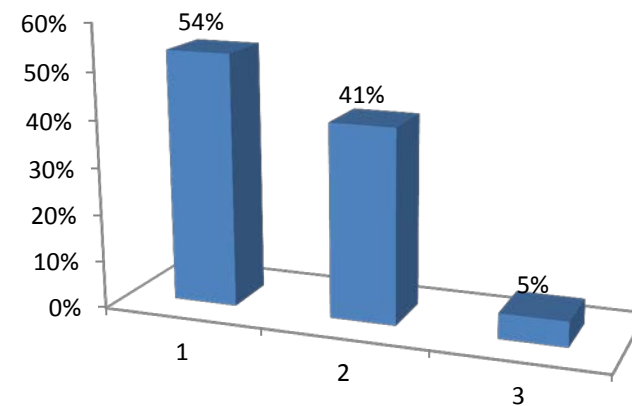
	Responses	
	Percent	Count
No vehicles	4%	2
1 vehicle	21%	12
2 vehicles	50%	28
3+ vehicles	25%	14
Totals	100%	56

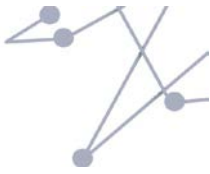




# 17.) Are you....? (Multiple Choice)

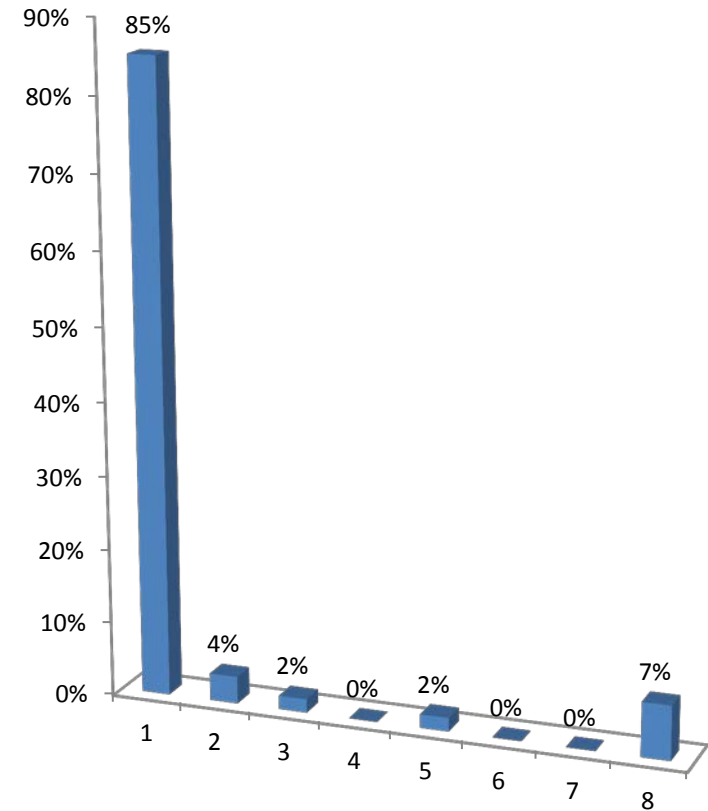
	Responses	
	Percent	Count
Male	54%	30
Female	41%	23
Other	5%	3
<b>Totals</b>	<b>100%</b>	<b>56</b>

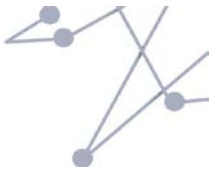




**18.) What race or ethnicity best describes you? (Multiple Choice)**

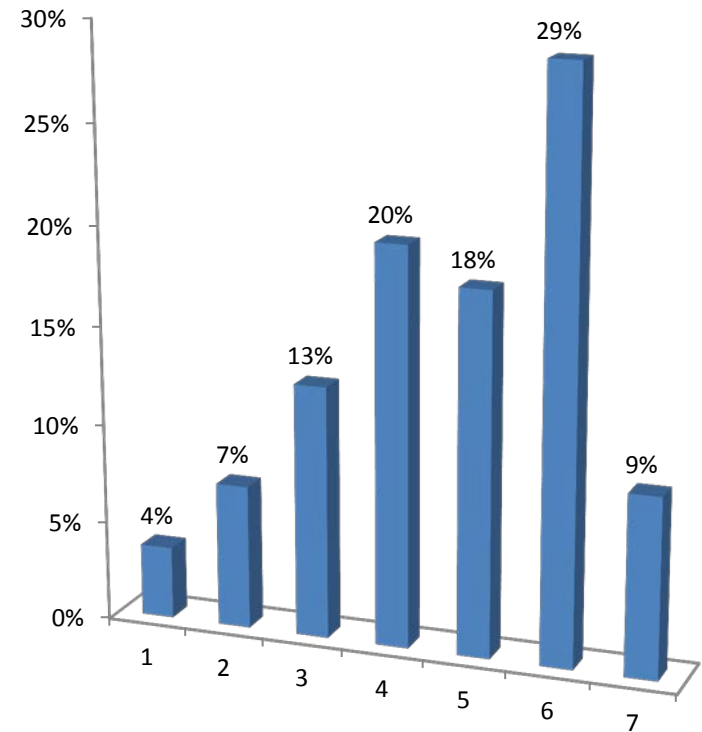
	Responses	
	Percent	Count
White, Not Hispanic	85%	46
Black, Not Hispanic	4%	2
White, Hispanic	2%	1
Black, Hispanic	0%	0
Asian American	2%	1
Native American	0%	0
More than One Race	0%	0
Prefer not to answer	7%	4
<b>Totals</b>	<b>100%</b>	<b>54</b>



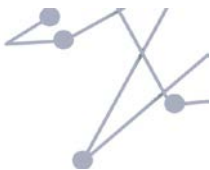


**19.) What is your household income? (Multiple Choice)**

	Responses	
	Percent	Count
\$0 - \$24,999	4%	2
\$25,000 - \$49,999	7%	4
\$50,000 - \$74,999	13%	7
\$75,000 - \$100,000	20%	11
\$101,000 - \$150,000	18%	10
More than \$150,000	29%	16
Prefer not to answer	9%	5
<b>Totals</b>	<b>100%</b>	<b>55</b>

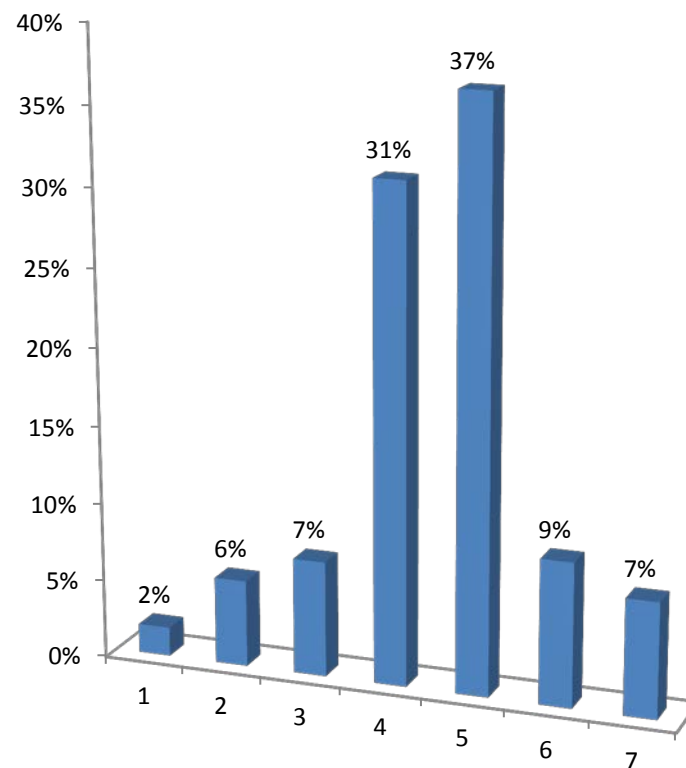






**20.) What is the highest degree or level of school completed? (Multiple Choice)**

	Responses	
	Percent	Count
Less than High School Diploma or GED	2%	1
Some College	6%	3
Associate's Degree (AA, AS)	7%	4
Bachelor's Degree (BA, BS)	31%	17
Master's Degree	37%	20
Professional Degree beyond Bachelor's Degree (MD, DDS, DVM, LLB, JD)	9%	5
Doctorate Degree (PhD or EdD)	7%	4
<b>Totals</b>	<b>100%</b>	<b>54</b>

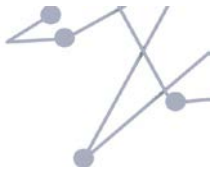




## Appendix C: Summary of Public Input – LIVE\*

What I <u>like</u> about my community from the LIVE perspective...		What I would <u>change</u> about my community from the LIVE perspective...	
1	Bound Brook - Small community. Downtown. Rail service.	1	Direct service to NYC. More downtown businesses.
2	A. Housing is great as is BUT TOO MUCH HIGH DENSITY IS DEVELOPING. B. Crime not a problem. C. Not a time to spend tax money on. D. Street activity fine. E.GREAT	2	Taxes.
3	A. Unhappy with high volume housing. B. Don't have a crime problem. C. Is ok. D. Very nice small town activities. E. Great local areas.	3	Dislike high taxes. No one from government cleans our stream. Less wetlands restrictions. It floods now. They used to take care of it. It is considered wetlands now.
4	Hillsborough - farms, Sourland Mountains and Duke Farms.	4	Improve transportation, especially on major arterial and collector roads.
5	Rural. People.	5	More walkable communities (i.e. work, shopping, recreation).
6	Safety.	6	Closer to shops and services (e.g. library).
7	Cultural activities in communities to bring people together.	7	Hillsborough -Town center. Public transportation.
8	Rural, but centralized.	8	Repair the roads, too many potholes.
9	Suburban feel - private houses, a little bit of land, quiet street.	9	Traffic congestion.
10	Access to preserved open space.	10	Taxes too high.
11	Beauty of the neighborhood.	11	More housing needed. Sewer capacity.
12	Open space and passive recreation. Large percent of town open space.	12	Transportation: better networks throughout.
13	Like: Safety, accessibility, good schools, good government, many non-profit organizations, library, snow removal, open spaces.	13	Improve public transportation and pedestrian.
14	Dislike: Lack of community facilities and activities, Rte 206 - heavy traffic, lack of quality restaurants, limited live theater and movie options, high cost of schools, no train stations, high property taxes, not business-friendly, limited shopping, big box stores/malls, lack of retail diversity.	14	Property taxes.
15	Quiet wooded. Close to town.	15	New sewers.
16	Rural environment. Not packed like sardines. Not parking concerns. Private.	16	No Main St. Change accessibility.
17	Main street activities.	17	Dislike increase congestion.
18	Close to job, proximity.	18	More effective town council.
19	Know everybody. Parks and green space.	19	Less tax.
20	Walk everywhere, Main street. Town is great backyard.	20	Better tax structure.
21	Private space. Upgrading old.	21	Change: increase crime.
22	Nice land. Easy drive. Low taxes. Great schools.	22	Backyards - serenity, peace and quiet. Landscaping noise, esp. on weekends.
23	Likes to walk around neighborhood and the safety for his son. Doesn't like fast traffic through neighborhoods.	23	Affordable homes and housing.
24	Natural surroundings and parks. Community proximity.	24	More single family homes. Less urban sprawl.
25	Mixed use communities, "Downtowns."	25	Property taxes.
26	Accessibility to NY/PA via highway and mass transit.	26	Opportunities to work.
27	Quality downtown areas (esp. Somerville)	27	Decrease taxes.
28	Closer to open land.	28	Taxes need to be lower.
29	Quality neighborhoods. Good blend rural/urban. Like accessibility to NYC/PA/highways.	29	More dense housing and green space.
30	Somerset County supports Ex-urban/rural parts of the area, with large residential plots and personally owned green space.	30	Property taxes.

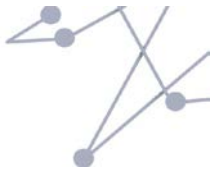
*\*An effort was made to record participants responses verbatim. Some notes were unreadable, and a scanned copy can be found in **Appendix G**.*



## Appendix C: Summary of Public Input – WORK\*

What I <u>like</u> about my community from the WORK perspective...		What I would <u>change</u> about my community from the WORK perspective...	
1	Increased income.	1	Mass transit to work.
2	Retirement - peace and quiet.	2	Sick days credit in teachers union.
3	Living and working in a suburban community.	3	We need lower corporate taxes to attract more business and pharmaceutical companies to NJ.
4	Opportunities for volunteer work. Educational lectures at the library.	4	Change: the fact that everyone has to drive to work.
5	Reaching retirement.	5	Improve workforce training.
6	Able to live close to where I work. Opportunity to be own boss.	6	Pay scale not up to speed.
7	Sense of community within local small business.	7	Find qualified applicants who want to work in area.
8	Work where I live.	8	Increase in high skill jobs.
9	Our ability to attract new business.	9	Lack of sustainable small businesses.
10	Single family home with large yard on a hill. This is my neighborhood. It's close to ferry and bus. I drive by car other places. I LOVE IT.	10	Lower property tax. Lower utility rate.
11	Enjoyed job.	11	High cost of living. Limited mass transit.
12	Many local opportunities.	12	Protect private property rights in all decisions.
13	Nice commute for me, but not others.	13	Let the free market system work.
14	Working at home.	14	Get government out of business.
15	People I work with.	15	Building maintenance facility not up to par.
16	The interesting people.	16	Need to attract more business to help lower real estate taxes.
17	Like Bridgewater as is.	17	Need more opportunities for new businesses to move into NJ.
18	When I worked felt BOUND BROOK a safe community for family. Wouldn't change anything. Easy to drive to work.	18	Need more job opportunities.
19	Close - short commute.	19	Don't like business climate chasing jobs out of NJ, so jobs are hard to get.
20	My job - helping businesses.	20	Lower costs (due to taxes and regulations) of doing business in NJ - to create more jobs and boost the economy.
21	I like that I have a job. I could be happier (I'm a teacher). Comes with the territory.	21	High tax environment.
22	Like the spirit of volunteerism and fundraising.	22	Halt high density housing development in Bridgewater. Regulate deer growth.
23	Close proximity. Easy to get to work.	23	Recent grads don't have as many opportunities.
24	Multi-levels in the area, everything from entry level to corporate positions.	24	More well-paying jobs for my children. Redevelopment and repurposing closed retail and offices.
25	Small town, rural atmosphere.	25	Better access to public transportation. Reduce traffic.
26	Nice commute for here, but not other direction.	26	Would like to see some run down areas in local towns fixed up.
27	Open space and healthy environment are important to the economy.	27	Young people don't have job opportunities.
28	Presence of quality firms with good jobs.	28	My income!
29	Services and infrastructure support business.	29	Attracting new businesses. Be more business friendly.
30	Stable, well-paying job. Learning opportunities.	30	More creative people to the workforce.
31	Somerset County as it is/no changes.	31	Less regulation. More available money. Create jobs. Create taxpayers to create revenue. Buy homes and goods. Incentivize business
32	Environment - like to lunch and shop downtown.	32	Not enough available jobs. Companies are holding back on hiring.
33	Business flexibility. Employment options.	33	Shuttle transportation (Princeton to Somerville)
		34	Affordable housing for employees to live in county.
		35	Eliminate minimum wage.
		36	Dislike high property taxes.
		37	Transportation choices to work - shuttle service.
		38	More vocational training.
		39	Discourage crowding housing in an urban environment and discourage apartment complexes crowding out private housing.
		40	Greater focus on vo-tech/workforce training - trades.
		41	Government involvement in the marketplace. They should reduce regulations and taxes and free the market to work its magic.

\*An effort was made to record participants responses verbatim. Some notes were unreadable, and a scanned copy can be found in **Appendix G**.



## Appendix C: Summary of Public Input – GETTING AROUND\*

What I like about my community from the perspective of GETTING AROUND....		What I would change about my community from the perspective of GETTING AROUND...	
1	Driving.	1	Improve highway transportation system.
2	Freedom of mobility.	2	Ease or improve the regulatory environment relating to job creation, retention and pay scales to create income and property tax revenue to aid transportation.
3	Driving.	3	Would like light rail, non-polluting transportation.
4	Easy access to public transportation.	4	Have motor vehicle fees and gas tax dedicated to road maintenance only.
5	Being able to drive and find gas stations.	5	Prevent deer from crossing roads and causing accidents.
6	I already have access to transit.	6	The trains to Newark and NY make too many stops. (Gladstone) More Newark and local bus.
7	I have enough open space. No more needed.	7	Less resident protected parking at train stations. Eventual support for electric cars.
8	Keep decisions local. Local government needs to be sovereign.	8	Transportation needs improving.
9	Conserving and preserving open space reduces congestion.	9	High prices of gas.
10	Transit options.	10	Congestion on highway.
11	Maintain school quality.	11	More public transportation.
12	SCOOT bus is enough for our community.	12	No public transportation other than train in Northern end of county.
13	Freedom to drive where and when I want.	13	Roads not well maintained - fix roads.
14	Quiet community.	14	Frequency of transportation for reverse commute.
15	Independent driving.	15	Maintain roads better.
16	Great train access.	16	Repair local roads, especially county roads. Climate change is over used and a force used to scare and intimidate.
17	Convenient.	17	More public transit and more pedestrian access.
18	Convenience of privately owned car.	18	Access for pedestrians everywhere.
19	Easy access.	19	Better road maintenance needed.
20	Easy access to NYC.	20	Access to public transit. Connecting transportation housing and jobs. Keep and create well-paying jobs. Reduce school costs. Congestions.
21	Mental health center.	21	Roads, pot holes. Congestion.
22	Good/accessible road system.	22	Need more bike-friendly roads.
23	Larger populated areas are well served.	23	Need more buses/public transportation.
24	Improvement in road construction currently underway.	24	Better roads maintenance.
25	The Somerset County infrastructure - roads.	25	More access to public transit - children, seniors especially.
26	Multiple modes of transportation.	26	Unsafe roads for cycling.
27	Easy access roads.	27	Everything is so far apart. Gasoline.
28	Option to take highway or secondary roads.	28	Better transportation for more rural communities.
29	I like my car.	29	Taxes.
30	Likes his car to get from place to place.	30	Lower taxes. Easier travel by car. Fewer obstructions. Fewer circles or lights time lights better.
31	Car - independence.	31	Reduce bike lanes in areas where no one rides bikes.
32	Getting to shopping with ease.	32	Lower taxes.
33	Chance for some alone time in car.	33	Don't reallocate taxes collected in the suburbs and rural areas into dense urban areas.
34	Ability to walk to shops, movies, etc. safely.	34	Eliminate stop light cameras. Enforce left lane speed limit.
35	Easy transportation.	35	Dislike: limited mass transit schedule. Dislike: Crowded park & ride lots.
36	Abundance of quality highway options.		
37	Mass transit available. Many major highways.		

*\*An effort was made to record participants responses verbatim. Some notes were unreadable, and a scanned copy can be found in **Appendix G**.*



## Appendix D: Priority Objectives – Missing

The following table is a list of ideas that participants felt were missing from the Goals and Objectives presented at the workshop.

LIVE		WORK		GETTING AROUND	
1	Reduce regulation nation. The rest will fall into place.	1	Lower taxes on small/mid-size businesses.	1	Remove red light cameras as a revenue sources.
2	Work on bringing more business to share the tax burden.	2	Cut taxes and state debt.	2	Flexibility is non-existent with public transport.
3	We always need a good local government. Home rule is important to the people of a community.	3	Reuse empty office buildings in the area.	3	Perpetual construction on major highways with lower speeds/traffic.
4	Lower taxes.	4	Attract businesses to move to NJ.	4	Easy access to major highways and arteries.
5	Support Goals 1 & 4. Don't support Goals 2 & 3. Too vague.	5	Preserve property rights so entrepreneurs can use their land as they see fit.	5	Don't even think about adding more red light cameras.
6	Let the free market system work.	6	Utilize vacant buildings for school overflow.	6	Keep DC out of your life.
7	Ensure people have single family suburban homes without being taxed to death.	7	Employment for people with disabilities.	7	Liberalize gun laws. More carry permits.
8	Make certain we can all live in the type of housing we prefer.	8	Create ability for leaders and experts to have their own business and offer goods/services big companies don't offer. Prevent constriction of competition.	8	Stable neighborhood represented as condos in traditional styling.
9	Expand private ownership of property.	9	Keep Washington and protocol healthcare out of our lives! They are detrimental to public health.	9	Incorporate shuttle service (Princeton to Somerville, for example).
10	Create a downtown.	10	Adequate parking is needed at some cultural venues to people can enjoy offerings and activities.	10	Recreational activities - indoor.
11	No more high density housing for our area. Get rid of deer.	11	"Improve access to arts and cultural resources" This does not happen at WORK!	11	Bring in more business to share the tax burden.
12	Don't just preserve the character of downtown but reinvent creatively to make each downtown unique and attractive to drive more people to stimulate economy and encourage	12	Lower taxes for businesses.	12	Preserve property rights
13	Home gardening, food production.	13	Lower taxes. Protect private property. Serene environment accessible by car.	13	Expanding and maintaining roads into suburban communities.
14	Mitigate climate change. Reduce CO2 greenhouse gases.	14	Public transportation to Manhattan.	14	Lower my taxes
15	Reduce deer population.	15	Stop using taxpayer money for open space. Enough space has been saved.	15	Diversity of environments gives citizens a choice. Somerset County should not become Jersey City.
16	No mention of agriculture for living and enjoying.	16	Lower taxes so businesses and people can afford to stay in NJ.	16	One seat ride Raritan Valley line to Manhattan.
17	Diverting tax dollars to centralize planning schemes.			17	More shuttle buses connecting places.
18	Leave well enough alone. None of these are necessary.			18	Respect property rights.
19	Contrive of deer population.			19	Better services for the disabled.
20	Protect private property rights.			20	What will this cost me in property taxes? This is a regional plan and others like Newark, etc. will have more input.
21	Climate change is a force to tax and change. Stop spread of high density housing.				
22	Add: while respecting individual property rights.				
23	Allow people to choose their own living environment.				



## Appendix E: Priority Objectives

At each station, participants were asked to rank the Objectives within the Goals, including any added Objectives from the attendees. Each participant was able to vote for a total of three objectives, prioritizing them as “Most Important” (represented with a green dot), “Very Important” (blue dot), and “Important” (yellow dot). The votes were weighted according to the following system: Most Important received 3 points, Very Important 2 points, Important 1 point. Then, each Objective received a total score. Total = (Most Important x3) + (Very Important x 2) + (Important)

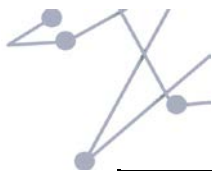
### Appendix E: Priority Objectives – LIVE

LIVE					
Goals	Most Important by weight	Very Important by weight	Important by weight	Total	Red Dot*
<b>Goal 1 - Strengthen the region's economy</b>	0	0	0	0	
Keep and create well-paying jobs	18	4	2	24	
Ensure infrastructure (transportation, utilities and communications) is in good repair and can support economic development	0	6	1	7	
Increase the economy's ability to adapt to change	0	0	0	0	
Increase regional self-sufficiency	0	2	1	3	
<b>Goal 2 - Ensure communities are safe, healthy &amp; great places to live</b>	0	0	0	0	
Create safe, stable neighborhoods with high-quality housing	3	0	1	4	
Improve public health	0	0	1	1	
Improve access to local parks and recreation	0	2	0	2	
Improve access to community resources such as libraries, senior centers, youth activities	3	0	0	3	
Preserve and enhance the character of existing downtowns and neighborhoods	15	8	0	23	
Improve access to arts and cultural resources	3	2	0	5	



LIVE					
	Most Important by weight	Very Important by weight	Important by weight	Total	Red Dot*
<b>Goal 3 - Improve everyone's access to opportunity</b>	0	0	0	0	
Connect where people live with where they need to go	0	4	1	5	
Maintain and improve the quality of schools	3	2	0	5	
Create inclusive, mixed-income neighborhoods	3	0	0	3	
Reduce combined transportation and housing costs	0	2	0	2	
<b>Goal 4 - Enhance efficiency &amp; conserve land</b>	0	0	1	1	
Increase investment near existing housing, jobs & transportation	0	0	2	2	
Maintain & expand vibrant downtowns and "main streets"	0	4	3	7	
Encourage development of compact neighborhoods with a mix of housing, shopping and services	0	4	3	9	2





LIVE					
	Most Important by weight	Very Important by weight	Important by weight	Total	Red Dot*
<b>Goal 5 - Protect &amp; enhance environment</b>	0	0	0	0	
Preserve open space and natural areas	6	0	2	8	
Improve air quality	0	0	0	0	
Reduce potential impacts of climate change	9	0	3	12	
Increase ability to respond to and recover from extreme weather events	12	0	2	14	
Ensure adequate water supply	9	0	1	10	
Improve water quality	0	0	1	1	
Direct development away from environmentally sensitive areas	3	8	0	11	
Preserve wildlife habitat	0	2	0	2	
<b>OTHER</b>					
Mitigate climate change. Reduce CO2 greenhouse gases.	3	0	0	3	
We always need a good local government. Home rule is important to the people of a community.	3	0	1	4	
Lower taxes	3	2	2	7	
Let the free market system work.	0	0	1	1	
Housing Options. Make certain we can all live in the type of housing we prefer.	6	2	0	8	
Expand private ownership of property.	3	2	0	5	
No more high density housing for our area. Get rid of deer.	0	4	1	5	
Contrive of deer population.	0	4	1	6	1
Add: while respecting individual property rights.	3	0	0	3	
Allow people to choose their own living environment.	0	2	0	2	
Existing infrastructure	3	0	1	4	
Main street activities	0	4	1	5	
Access to open space and rec.	0	4	2	6	

\*Red colored dots were distributed at the stations, but participants were asked to use these at the Together North Jersey Station only. A few participants did not realize this, so they may have placed a total of four dots at this station. The red dots were tallied as one point.



## Appendix E: Priority Objectives – WORK

WORK					
Goals	Most Important by weight	Very Important by weight	Important by weight	Total	Red Dot*
<b>Goal 1 - Strengthen the region's economy</b>	0	0	0	0	
Keep and create well-paying jobs	9	6	4	19	
Ensure infrastructure (transportation, utilities and communications) is in good repair and can support economic development	12	6	3	22	1
Increase the economy's ability to adapt to change	3	2	0	5	
Increase regional self-sufficiency	3	0	1	4	
<b>Goal 2 - Ensure communities are safe, healthy &amp; great places to live</b>	0	0	0	0	
Create safe, stable neighborhoods with high-quality housing	0	4	0	4	
Improve public health	3	0	3	6	
Improve access to local parks and recreation	6	0	0	6	
Improve access to community resources such as libraries, senior centers, youth activities	0	2	0	2	
Preserve and enhance the character of existing downtowns and neighborhoods	9	6	2	17	
Improve access to arts and cultural resources	6	4	0	10	
<b>Goal 3 - Improve everyone's access to opportunity</b>	0	0	0	0	
Connect where people live with where they need to go	3	0	1	4	
Maintain and improve the quality of schools	3	0	0	3	
Create inclusive, mixed-income neighborhoods	0	0	0	0	
Reduce combined transportation and housing costs	0	0	1	2	1



WORK					
	Most Important by weight	Very Important by weight	Important by weight	Total	Red Dot*
<b>Goal 4 - Enhance efficiency &amp; conserve land</b>	0	0	0	0	
Increase investment near existing housing, jobs & transportation	0	2	1	3	
Maintain & expand vibrant downtowns and "main streets"	6	6	1	13	
Encourage development of compact neighborhoods with a mix of housing, shopping and services	3	4	3	12	2
<b>Goal 5 - Protect &amp; enhance environment</b>	0	0	0	0	
Preserve open space and natural areas	3	4	1	8	
Improve air quality	0	0	0	0	
Reduce potential impacts of climate change	0	4	2	7	1
Increase ability to respond to and recover from extreme weather events	0	6	0	6	
Ensure adequate water supply	0	2	0	2	
Improve water quality	0	0	0	0	
Direct development away from environmentally sensitive areas	3	2	1	6	
Preserve wildlife habitat	0	0	0	0	
<b>OTHER</b>					
Lower taxes for businesses	9	2	2	13	
Cut taxes and state debt	0	2	1	3	
Reuse empty office buildings in the area.	3	0	0	3	
Preserve property rights so entrepreneurs can use their land as they see fit.	6	2	1	9	
Utilize vacant buildings for school overflow.	3	0	0	3	
Entrepreneurship	9	4	2	15	
Single family home with large yard on a hill. This is my neighborhood. It's close to ferry and bus. I drive by car other places. I LOVE IT.	3	0	0	3	
Let the free market system work.	0	0	0	1	1
Halt high density housing development in Bridgewater	3	0	0	3	

\*Red colored dots were distributed at the stations, but participants were asked to use these at the Together North Jersey Station only. A few participants did not realize this, so they may have placed a total of four dots at this station. The red dots were tallied as one point.



## Appendix E: Priority Objectives – GETTING AROUND

GETTING AROUND					
Goals	Most Important by weight	Very Important by weight	Important by weight	Total	Red Dot*
<b>Goal 1 - Strengthen the region's economy</b>	0	0	0	0	
Keep and create well-paying jobs	3	2	1	6	
Ensure infrastructure (transportation, utilities and communications) is in good repair and can support economic development	15	4	4	23	
Increase the economy's ability to adapt to change	12	6	0	18	
Increase regional self-sufficiency	0	0	0	0	
<b>Goal 2 - Ensure communities are safe, healthy &amp; great places to live</b>	0	0	0	0	
Create safe, stable neighborhoods with high-quality housing	0	0	0	0	
Improve public health	0	2	0	2	
Improve access to local parks and recreation	0	4	0	4	
Improve access to community resources such as libraries, senior centers, youth activities	3	2	0	5	
Preserve and enhance the character of existing downtowns and neighborhoods	0	2	4	6	
Improve access to arts and cultural resources	0	0	0	0	



GETTING AROUND					
	Most Important by weight	Very Important by weight	Important by weight	Total	Red Dot*
<b>Goal 3 - Improve everyone's access to opportunity</b>	0	0	0	0	
Connect where people live with where they need to go	3	6	5	14	
Maintain and improve the quality of schools	0	0	0	0	
Create inclusive, mixed-income neighborhoods	3	0	0	3	
Reduce combined transportation and housing costs	0	4	0	4	
<b>Goal 4 - Enhance efficiency &amp; conserve land</b>	0	0	0	0	
Increase investment near existing housing, jobs & transportation	3	0	1	4	
Maintain & expand vibrant downtowns and "main streets"	0	2	1	3	
Encourage development of compact neighborhoods with a mix of housing, shopping and services	6	0	1	8	1



GETTING AROUND					
	Most Important by weight	Very Important by weight	Important by weight	Total	Red Dot*
<b>Goal 5 - Protect &amp; enhance environment</b>	0	0	0	0	
Preserve open space and natural areas	9	0	1	10	
Improve air quality	3	2	0	5	
Reduce potential impacts of climate change	0	2	0	3	1
Increase ability to respond to and recover from extreme weather events	3	0	0	3	
Ensure adequate water supply	0	0	1	1	
Improve water quality	0	4	0	4	
Direct development away from environmentally sensitive areas	0	0	1	1	
Preserve wildlife habitat	0	0	0	0	
<b>OTHER</b>					
Stable neighborhood represented as condos in traditional styling.	0	0	1	1	
Bring in more business to share the tax burden.	3	0	0	3	
Preserve property rights	3	0	1	4	
Expanding and maintaining roads into suburban communities.	9	6	2	17	
Lower my taxes	3	6	3	12	
Diversity of environments gives citizens a choice.	0	4	3	7	
One seat ride Raritan Valley line to Manhattan.	3	0	0	3	
SCOOT bus is enough for our community.	3	0	0	3	
Freedom to drive where and when I want.	3	0	0	3	
Reduce bike lanes in areas where no one rides bikes.	0	0	0	1	1
Remove red light cameras as a revenue sources.	6	0	0	6	
Access to public transit	12	0	0	12	
Connecting transportation, housing and jobs	6	8	0	14	
Don't even think about adding more red light cameras.	0	2	2	4	
Keep DC out of your life.	0	6	0	6	
Liberalize gun laws. More carry permits.	3	2	0	5	
Incorporate shuttle service (Princeton to Somerville, for example).	3	0	0	3	

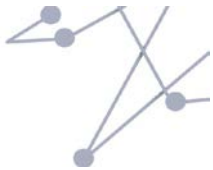
\*Red colored dots were distributed at the stations, but participants were asked to use these at the Together North Jersey Station only. A few participants did not realize this, so they may have placed a total of four dots at this station. The red dots were tallied as one point.



## Appendix F: Together North Jersey Station

COORDINATE	
Goal 6 - Address regional growth issues	Totals
Align existing plans, programs and regulations at all levels of government	13
Foster collaboration between federal, state, county and local governments to address regional growth issues	3
Maintain up-to-date, coordinated local, regional and State functional plans that reflect these goals	7
Provide a regional framework for making decisions about capital investments, programs, regulations and major development applications	2
Ensure a broad cross-section of residents, businesses and government are engaged in planning efforts, including those traditionally under-represented in regional planning processes	5
Respect property rights during planning and implementation	32
Total:	62

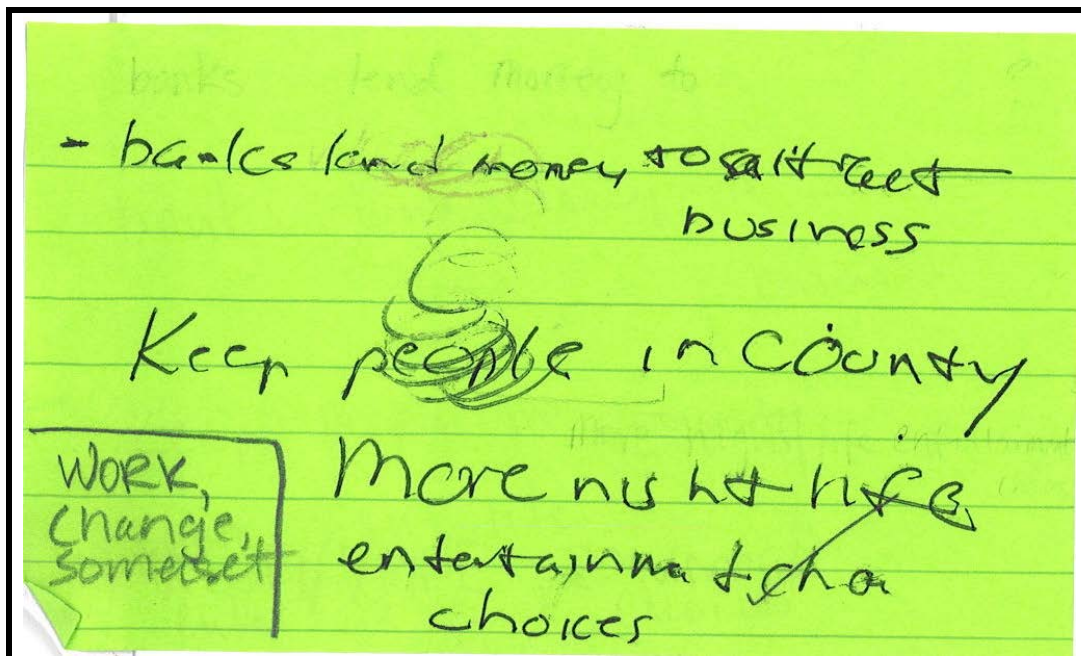




## Appendix G: Unreadable Public Input Responses

Session Name: Somerset County, 3/12/13

### WORK: Change



### LIVE: Change

