

Workshop Summary City of Elizabeth Discovery Workshop Union County College – Elizabeth, NJ Monday, March 4, 2013

BACKGROUND

During the months of February through May 2013, **Together North Jersey** (TNJ) and the **North Jersey Transportation Planning Authority** (NJTPA) jointly convened a series of 14 public outreach workshops. The purpose of the workshops was to gather input from local officials, residents and businesses about what it is like to live, work and get around northern New Jersey and how we can work together to ensure prosperous future for the northern part of the state. The workshops were convened in support of two concurrent planning processes that are described in more detail below.

About Together North Jersey

Together North Jersey is a voluntary partnership of jurisdictions, organizations, businesses, educational institutions, and agencies in the 13-county NJTPA planning region (See Figure 1) that have agreed to work together to develop a long-range action plan to address the challenges facing the region. In November 2011, the U.S. Department of Housing and Urban Development awarded **Together North**

Jersey a \$5 million Sustainable Communities Regional Planning Grant. The grant is matched with an additional \$5 million in leveraged funds from project partners. Grant funds will be used to: 1) develop a Regional Plan for Sustainable Development (RPSD) for the 13-county planning region; 2) implement up to 18 local demonstration projects; and 3) provide technical assistance and offer capacity-building opportunities that include: a program of educational conference, workshops and webinars as well as to two capacity-building grant programs – one for counties and cities participating on the steering committee and a second for non-governmental organizations (NGOs) to become involved in the regional planning process.

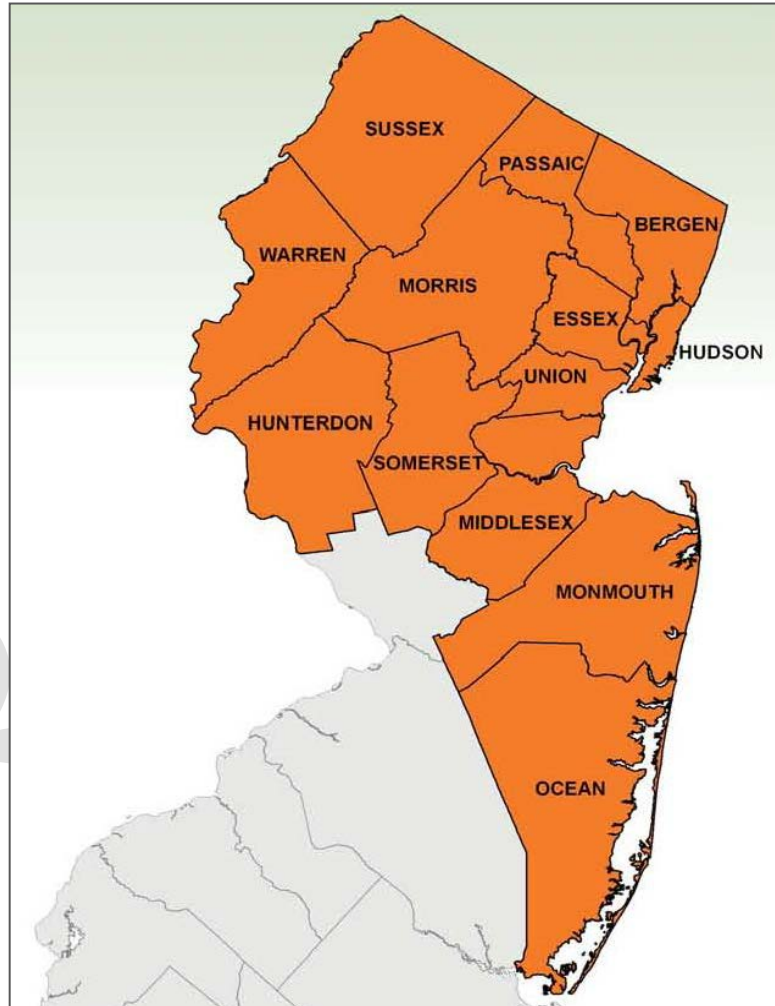


Figure 1: The NJTPA and Together North Jersey Planning Region



The Together North Jersey RPSD Planning Process

The **Together North Jersey** RPSD planning process will engage officials at multiple levels of government, businesses, non-governmental organizations, other stakeholders and the general public in a strategic planning process designed to address the challenges facing the region. The planning process is divided into three phases designed to explore existing conditions and trends, consider different scenarios for future growth and development and develop a detailed action plan for achieving the region’s vision and goals (See Figure 2).



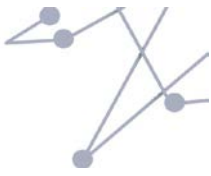
Figure 2: Together North Jersey RPSD Planning Process

About the NJTPA

The NJTPA is the federally authorized Metropolitan Planning Organization (MPO) for 6.6 million people in the 13-county northern New Jersey region. Each year, the NJTPA oversees more than \$2 billion in transportation improvement projects and provides a forum for interagency cooperation and public input into funding decisions. It also sponsors and conducts studies, assists county planning agencies and monitors compliance with national air quality goals.

NJTPA’s Regional Transportation Plan

NJTPA’s current Regional Transportation Plan (RTP), **Plan 2035**, was adopted in 2009. Under federal law, MPOs like the NJTPA are required to update their long range plans every four years as a condition for the receipt of federal transportation funding. NJTPA is currently in the process of updating **Plan 2035**. The updated plan (**Plan 2040**) is scheduled for adoption by fall 2013. It will lay out the vision for development of the transportation system through 2040 and serve as a transportation investment guide for the region. Preparation of **Plan 2040** is being closely coordinated with the Together North Jersey RPSD planning process.



“DISCOVERY” WORKSHOP PURPOSE, OBJECTIVES AND AGENDA

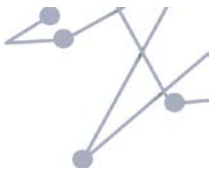
As stated above, the purpose of the Discovery workshops was to gather input from local officials, residents and businesses about what it is like to live, work and get around northern New Jersey and how we can work together to ensure prosperous future for the northern part of the state. The more specific objectives of the workshops were to:

1. Introduce Together North Jersey to local government (county and municipal) officials, stakeholders and the general public throughout the region.
2. Provide meeting participants with information about the RPSD and RTP planning processes.
3. Provide meeting participants with information about current conditions and trends related to the topic areas to be addressed in the planning process.
4. Solicit and obtain input related to the following:
 - What do people like most about their communities/region?
 - What might people like to change if they could?
 - What aspects of personal growth and well-being, family, community, nature, education, safety and security are most important to people in the region?
 - Which community planning goals and objectives are most important?
 - What are the region’s biggest strengths?
 - What are the biggest challenges facing the region?
 - What transportation challenges and priorities are most important?
 - How should we prioritize transportation investments?

The following brief agenda outlines how the workshops were organized and conducted:

- I. Self-Discovery Open House**
 - a. Sign-in and Refreshments
 - b. Where are you from? Where do you work? Map
 - c. Engage North Jersey website demonstrations
- II. Welcoming Remarks**
 - a. Local elected official
- III. Agenda Overview and Ground Rules**
- IV. Introducing Together North Jersey Presentation**
- V. What’s Important to You Polling Exercise**
- VI. “Listen & Learn” Activity Stations**
 - a. Together North Jersey Q&A (optional)
 - b. NJTPA Regional Transportation Plan
 - c. LIVE
 - d. WORK
 - e. GETTING AROUND
- VII. Wrap Up, Report Back and Closing Remarks**

The sections that follow summarize the input received at the workshop.



OVERVIEW

The meeting hosted jointly by Together North Jersey and the North Jersey Transportation Planning Authority (NJTPA) scheduled for approximately two-and-a-half hours began at 6:00 p.m. with participants arriving to explore the Open House portion of the workshop. A total of 28 participants attended the meeting, which included a program of the following:

1. Welcoming remarks given by Mayor Chris Bollwage;
2. Overviews of the Together North Jersey (TNJ) effort and the NJTPA's Regional Transportation Plan update were presented by Jon Carnegie, Project Director of TNJ and Executive Director of the Alan M. Voorhees Transportation Center at the Bloustein School of Planning and Public Policy, Rutgers University, in plenary;
3. An interactive polling exercise focusing on important challenges and opportunities facing the region,
4. Break-out sessions, rotating through five stations (LIVE, WORK, GETTING AROUND, Together North Jersey and NJTPA/RTP) led by two facilitators from the TNJ project team per station, at the stations participants prioritized goals/objectives and provided input on investment;
5. A wrap-up/report out, given by Jon Carnegie and the station facilitators.

OPEN HOUSE

Self-Discovery

As attendees arrived at the workshop, they were asked to sign-in to receive notification of follow-up events. Attendees were also given a program folder, which contained a workshop agenda, copies of all of the presentations, TNJ and NJTPA publications, a passbook to record stamps denoting visits to each of the stations in order to encourage participation and a comment form. Until approximately 6:30 p.m., at their leisure, participants had the option of enjoying a light meal provided by TNJ, visiting the various stations, and/or becoming acquainted with the "EngageNorthJersey.com" site that replicated most of the in-person activities online.

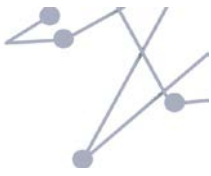
Map Exercise: "Where are you from?"

After receiving their program folders, attendees were asked to place dots on a map indicating where they lived and where they worked around the City of Elizabeth. To view the map, see **Appendix A**.

WORKSHOP INTRODUCTION

Welcoming Remarks

An elected official or director of planning of the host jurisdiction of the workshop is invited to provide welcoming remarks. The remarks usually include connection between the Together North Jersey effort and/or the NJTPA work and initiatives of the host jurisdiction. In this workshop, Mayor Chris Bollwage spoke gave welcoming remarks and noted the importance of the City of Elizabeth as a transit hub. He also emphasized the need for improvements at NJ Transit's Elizabeth train station and highlighted the Groundwork Elizabeth: Safe Routes to School and Walkability in Elizabeth "micro-grant" project, funded through Together North Jersey.



Introducing Together North Jersey Presentation

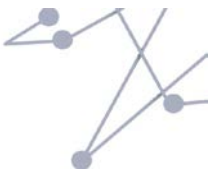
Together North Jersey Project Director, Jon Carnegie, provided an overview presentation on Together North Jersey that included the following information:

- **What is Together North Jersey?** – Together North Jersey is a voluntary partnership of cities, towns, counties, agencies, non-profit organizations and others in northern New Jersey that have agreed to work together with the public to plan for the region’s future. Together North Jersey is funded by a Sustainable Communities Regional Planning Grant from U.S. Dept. of Housing and Urban Development.
- **Why Together North Jersey?** – Together North Jersey was created to provide a way for local officials, businesses, state and regional agencies, non-profit organizations, other stakeholders and the public to work together to develop a regional action plan to address the many challenges facing the region. These challenges include:
 - Declining prosperity
 - Stagnant/uneven job growth
 - High unemployment
 - Increasing debt delinquencies
 - Declining home values & ownership rates
 - High cost of living
 - Housing affordability
 - Transportation costs
 - Fiscal uncertainty
 - High property taxes
 - Government debt burden
 - Looming service cuts
 - Unfunded maintenance
 - Underperforming Cities
 - Concentration of poverty
 - Public safety issues
 - School quality
 - Long commutes & traffic congestion
 - Environmental & public health concerns
 - Increase in chronic disease
 - Air & water pollution
 - Recovering from recent disasters
 - Changing demographics
 - Shifting real estate market demand



- **What will Together North Jersey do?** – Together North Jersey will: 1) undertake an extensive outreach process to figure out what we can do together to address regional challenges; 2) implement up to 40 local planning projects to address local priorities and inform the regional plan; and 3) provide technical assistance and training
- **Public and Stakeholder Engagement** – The purpose of Together North Jersey’s public and stakeholder engagement activities is to listen and learn from local officials, residents, business owners and other stakeholders from around the region. Activities will include: interviews and small group meetings; three Together North Jersey Standing Committees that will meet 3-6 times per year; up to 50 public workshops and meetings over 18 months, and the Engage North Jersey website which will collect input from people on-line. The planning process will include three phases that seek to answer the following three questions: Where are we now and where are we heading? Where do we want to go? and, How do we get there?
- **Regional Trends** – Zenobia Fields of the NJTPA gave a presentation of demographic trends for Union County as well as the region.

DRAFT



INTERACTIVE POLLING EXERCISE

“Tell us what is important to you.”

Jon Carnegie led the participants in an interactive polling exercise. Each participant held a remote voting pad and was able to register their votes anonymously. A variety of multiple choice polling questions asked participants to consider what aspects of living in their community and the region they found most important. The top answers can be found in Table-1. For a complete listing of the results, as well as additional questions relating to participant demographics, see **Appendix B**.

Table-1: Interactive Polling Top Answers

Question	Top Answer	Percent
Which Personal Growth and Well-Being value is most important to you?	Being healthy and taking care of yourself	65%
Which Family value is most important to you?	Having time to spend together	59%
Which Community value is most important to you?	Having good neighbors and being a good neighbor	46%
Which Education value is most important to you?	Having opportunities to keep learning all through life	44%
Which Nature value is most important to you?	Taking good care of our air, water and natural lands	67%
Which Safety and Security value is most important to you?	Having safe neighborhoods	52%
How should the region spend transportation dollars? (Participants were asked to select 3)	Expanding transit service	22%
	Making existing highways work better	21%
	Fixing unsafe bridges	13%
	Making existing transit work better	13%
What sources of funds should be used to support transportation?	Gas taxes	28%

LISTEN & LEARN ACTIVITY

During the Listen & Learn Activity there were five stations (NJTPA/RTP, LIVE, WORK, GETTING AROUND and TNJ) to rotate through.

- At the **NJTPA/RTP Station**, participants were asked “How do you want to INVEST?,” in terms of transportation funding. This was done by dropping investment beads into jars correlated with particular capital investment categories (i.e. transit expansion, bike/ped, etc.)
- While rotating through the three **Topical Stations (LIVE, WORK, GETTING AROUND)**, participants shared ideas about “What you LIKE or would CHANGE about your community?” Then prioritized goals and objectives through a “Dotmocracy” exercise.
- At the **TNJ Station**, regional coordination goals were discussed and prioritized.



NJTPA/Regional Transportation Plan (RTP) Station: Transportation Investment

At this station, participants heard from NJTPA staff about the current Regional Transportation Plan update. Current Federal transportation investments are represented by percent in pie chart Figure 3-A. Participants at the City of Elizabeth workshop were asked to select three top priorities within the current investment categories. A total of 20 people participated in the RTP exercise. Their desired investments are displayed in the pie chart Figure 3-B.

Figure 3-A: Current Federal Transportation Investments

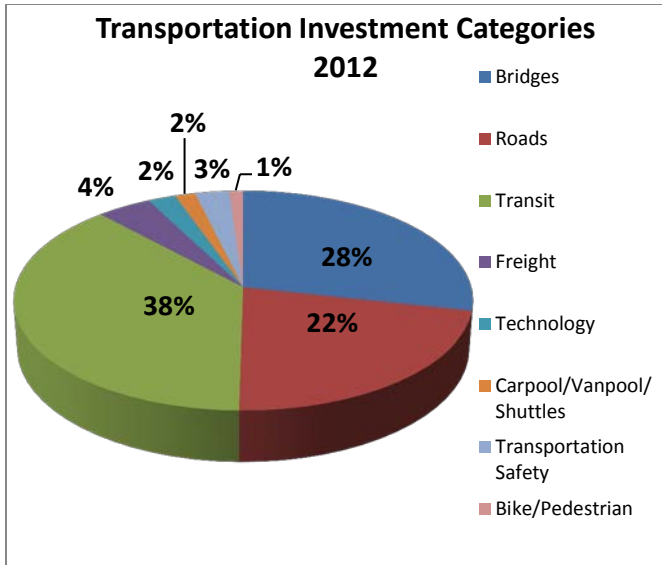
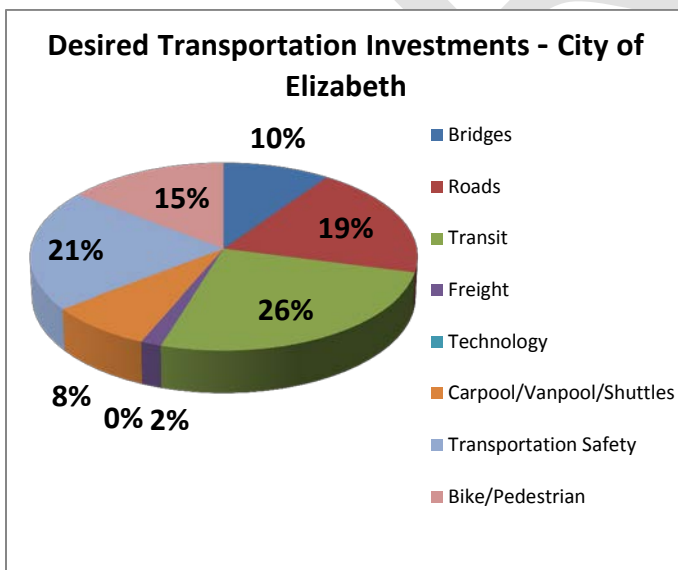
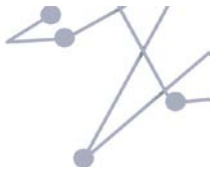


Figure 3-B: Desired Transportation Investments





Topical Station: Summary of Public Input

At the LIVE, WORK and GETTING AROUND station rotations, participants were asked two questions: “What do you like about where you live/work/or about how you get around your community?” And, “What would you like to change about where you live/work/or about how you get around your community?” Participants were asked to share the answers to these questions with someone sitting next to them. Answers were recorded on post-it notes.

At the three stations, after participants shared their “like” and “change,” several attendees reported aloud the responses they heard and discussed. The post-it notes were collected and each response was recorded. Below is a summary of the top ideas that emerged. (See **Appendix C** for a complete list of participants’ answers.)

In the **LIVE** Station, participants shared that they enjoyed their neighbors, the area and its proximity to transit. Common “Like” statements included:

- Good neighbors
- Nice area
- Walking community
- Close to public transit

In the **WORK** Station, participants overwhelmingly liked that there were job opportunities close to where they live, or that work is easily accessible by transit. Common “Like” statements included:

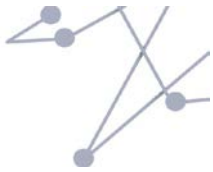
- Like working within the community
- Close proximity to work
- Very convenient to NYC and Newark
- Access to public transportation

In the **GETTING AROUND** Station, attendees liked the walkability of their communities and the convenience of many transit options. Common “Like” statements included:

- Access to transit
- Proximity to services and public transportation
- Good things in walking distance
- Availability of varied transportation

In the **LIVE** Station the change many participants requested was related to reducing crime or better police presence and response. In addition, attendees expressed a desire to see more parks and green space in their communities. Common “Change” statements included:

- More police response
- Reduce crime
- Need more open space
- Not enough trees



In the **WORK** Station, many participants expressed a desire to see more job opportunities, higher paying jobs, and more job training opportunities. Common “Change” statements included:

- Creating job opportunities for community
- Better job training across the board
- Not enough high paying and high quality jobs in the area
- More opportunity for fulfilling employment

In the **GETTING AROUND** Station, the biggest change participants wanted to see related to providing more transit in the form of light rail, more bus service, and more affordable transit options. Common “Change” statements included:

- More and cheaper public transportation
- Low polluting, light rail system
- More bus transportation
- Better public transportation in future

Priority Objectives

At the LIVE, WORK and GETTING AROUND stations, participants were asked to review the draft Goals and Objectives for the Regional Plan for Sustainable Development. After reviewing these, participants were asked to identify any missing objectives by writing them on a post-it and adding them to the listed objectives. A list of the missing objectives that participants identified is cataloged in **Appendix D**.

Next, participants were asked to rank the objectives within the goals, including any added objectives from the attendees. Each participant was able to vote for a total of three objectives, prioritizing them as “Most Important,” “Very Important,” and “Important.” The votes were weighted according to priority, and a point system tracked the prioritized objectives accordingly. **Table - 2** displays the Goals and Objectives with the station totals and overall totals. For a complete list of the responses, see **Appendix E**.

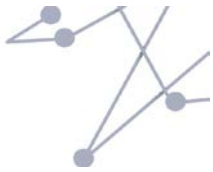


Table-2: Priority Goals and Objectives Summary – City of Elizabeth*

Goals and Objectives	LIVE Points	WORK Points	GETTING AROUND Points	Overall Points
Goal 1 - Strengthen the region's economy	0	0	0	0
Keep & create well-paying jobs	28	32	17	77
Ensure infrastructure (transportation, utilities & communications) is in good repair & can support economic development	9	5	7	21
Increase the economy's ability to adapt to change	6	3	2	11
Increase regional self-sufficiency	1	4	3	8
Goal 2 - Ensure communities are safe, healthy & great places to live	0	0	0	0
Create safe, stable neighborhoods with high-quality housing	18	17	20	55
Improve public health	3	12	2	17
Improve access to local parks & recreation	12	2	12	26
Improve access to community resources such as libraries, senior centers, youth activities	4	6	0	10
Preserve & enhance the character of existing downtowns & neighborhoods	8	14	8	30
Improve access to arts & cultural resources	5	3	9	17
Goal 3 - Improve everyone's access to opportunity	0	0	0	0
Connect where people live with where they need to go	4	9	14	27
Maintain & improve the quality of schools	11	13	11	35
Create inclusive, mixed-income neighborhoods	4	2	1	7
Reduce combined transportation & housing costs	3	5	4	12
Goal 4 - Enhance efficiency & conserve land	0	0	0	0
Increase investment near existing housing, jobs & transportation	6	2	6	14
Maintain & expand vibrant downtowns & "main streets"	5	9	2	16
Encourage development of compact neighborhoods with a mix of housing, shopping & services	3	4	7	14
Goal 5 - Protect & enhance environment	0	0	0	0
Preserve open space & natural areas	1	5	0	6
Improve air quality	3	0	5	8
Reduce potential impacts of climate change	0	0	3	3
Increase ability to respond to and recover from extreme weather events	0	1	0	1
Ensure adequate water supply	2	1	0	3
Improve water quality	0	0	0	0
Direct development away from environmentally sensitive areas	0	0	0	0
Preserve wildlife habitat	0	0	0	0

#'s = Indicates top five Objectives selected by participants.

*See Appendix D for missing Objectives that received points.



At the **LIVE** Station, the objective “Keep and create well-paying jobs” was the top objective (receiving 28 points). The second priority was the objective “Create safe, stable neighborhoods with high-quality housing” (with 18 points), and the third priority was the objective “Improve access to local parks and recreation” (receiving 12 points).

At the **WORK** Station, the top objective was the same as the LIVE station “Keep and create well-paying jobs” (receiving 32 points). The second objective, again, mirrored the LIVE station with the objective “Create safe, stable neighborhoods with high-quality housing” (with 17 votes). The third priority was the objective “Preserve and enhance the character of existing downtowns and neighborhoods” (with 14 points).

At the **GETTING AROUND** Station, the top two objectives were repeats from both the LIVE and WORK stations. The top priority was “Create safe, stable neighborhoods with high-quality housing” (receiving 20 points), and the next priority objective was “Keep and create well-paying jobs” (with 17 points). The third priority objective was “Connect where people live with where they need to go” (with a total of 14 points).

TNJ Station: Regional Coordination

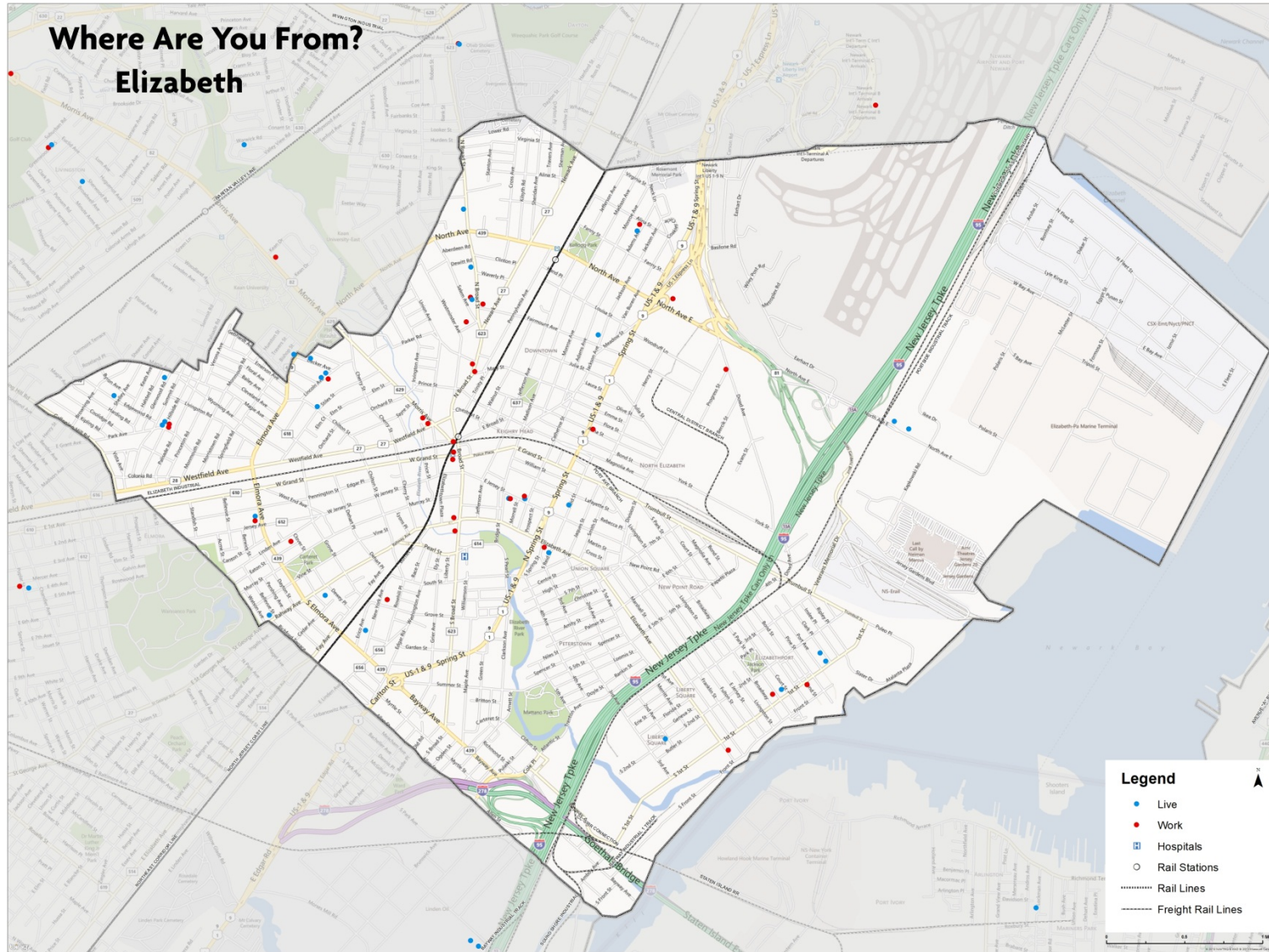
At the Together North Jersey Station, 22 attendees participated in a “Dotmocracy” exercise to identify a top regional objective. The Objective with the majority of votes was, “Ensure a broad cross-section of residents, businesses and government are engaged in planning efforts, including those traditionally under-represented in regional planning processes.” For a list of all the regional objectives and results, see **Appendix F**.

WRAP UP, REPORT BACK & CLOSING REMARKS

The meeting concluded with a wrap-up given by Jon Carnegie and a report back from each of the station facilitators. Participants were encouraged to continue contributing to the regional discussion by visiting the “EngageNorthJersey.com” website.



Appendix A: Map





Appendix B: Interactive Polling

Session Name: Elizabeth 3-4-2013 7:46 PM

Date Created: 3/4/2013 5:30:32 PM

Active Participants: 27 of 27

Average Score: 0.00%

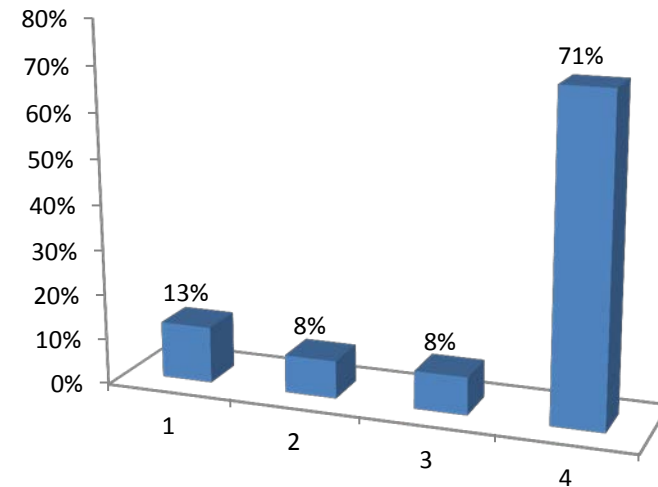
Questions: 20

Results By Question

PRACTICE QUESTION

1.) "Jersey Shore" is must-see TV. (Multiple Choice)

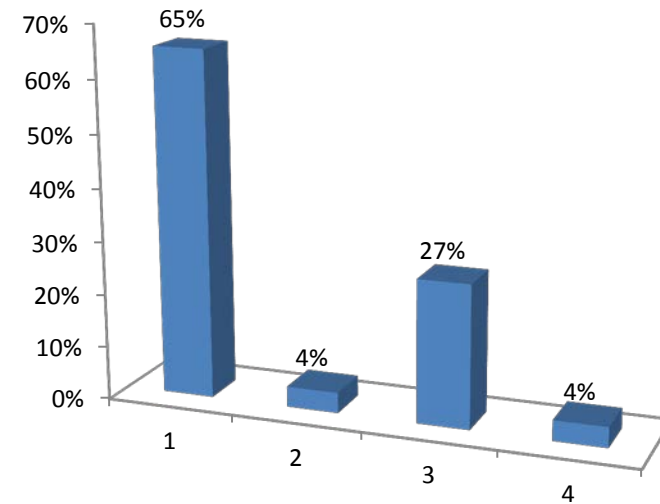
	Responses	
	Percent	Count
Strongly Agree	13%	3
Somewhat Agree	8%	2
Somewhat Disagree	8%	2
Strongly Disagree	71%	17
Totals	100%	24

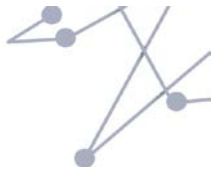




2.) Which Personal Growth and Well-Being value is most important to you? (Multiple Choice)

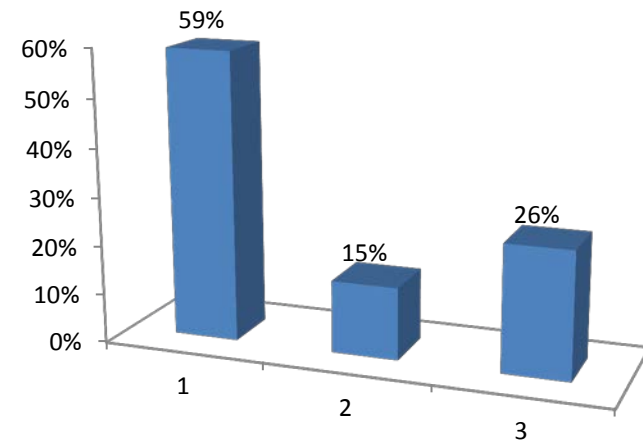
	Responses	
	Percent	Count
Being healthy and taking care of yourself	65%	17
Being close to nature	4%	1
Volunteering and giving back to your community	27%	7
Spirituality and religion	4%	1
Totals	100%	26

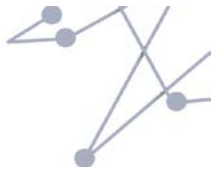




3.) Which Family value is most important to you? (Multiple Choice)

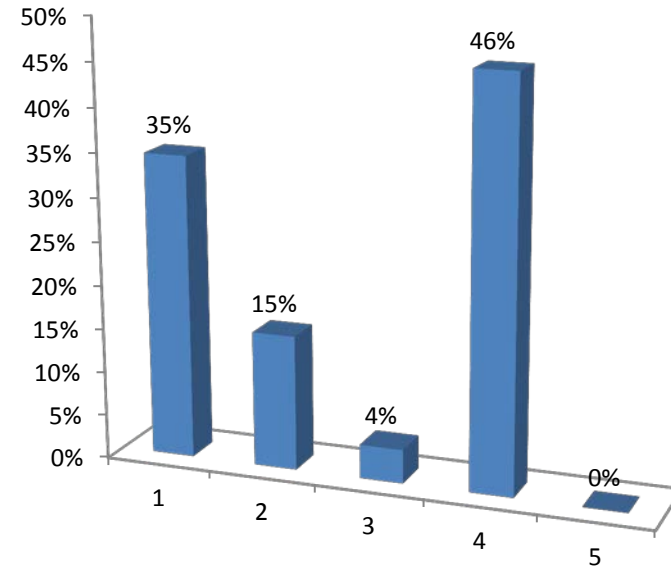
	Responses	
	Percent	Count
Having time to spend together	59%	16
Having extended family nearby	15%	4
Making time for recreational and cultural activities together	26%	7
Totals	100%	27





4.) Which Community value is most important to you? (Multiple Choice)

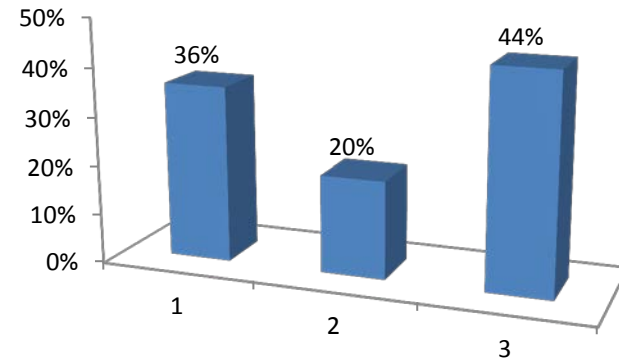
	Responses	
	Percent	Count
Feeling a sense of community	35%	9
Having community-sponsored activities to go to	15%	4
Living in a diverse community	4%	1
Having good neighbors and being a good neighbor	46%	12
Being self-reliant and left alone	0%	0
Totals	100%	26





5.) Which Education value is most important to you? (Multiple Choice)

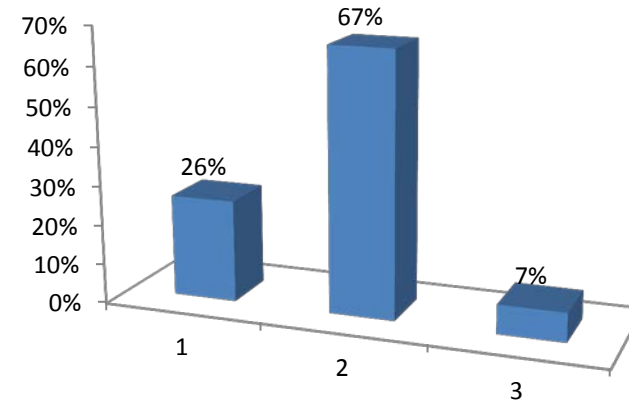
	Responses	
	Percent	Count
Having quality neighborhood schools	36%	9
Being able to go to college or a trade school	20%	5
Having opportunities to keep learning all through life	44%	11
Totals	100%	25





6.) Which Nature value is most important to you? (Multiple Choice)

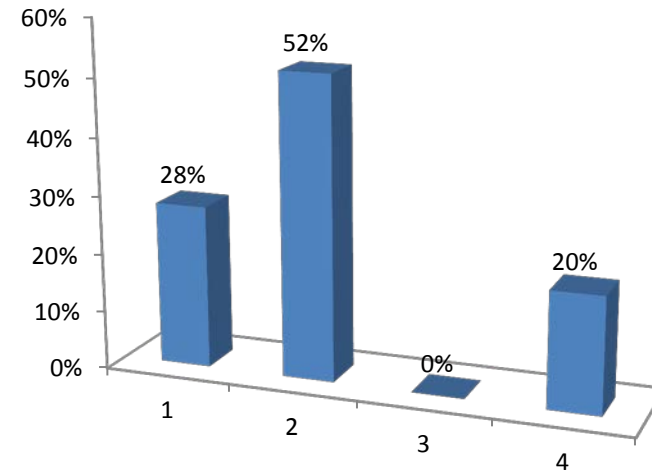
	Responses	
	Percent	Count
Having green space nearby	26%	7
Taking good care of our air, water and natural lands	67%	18
Protecting wildlife habitat	7%	2
Totals	100%	27

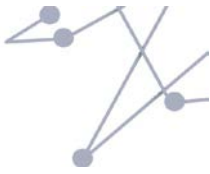




7.) Which Safety and Security value is most important to you? (Multiple Choice)

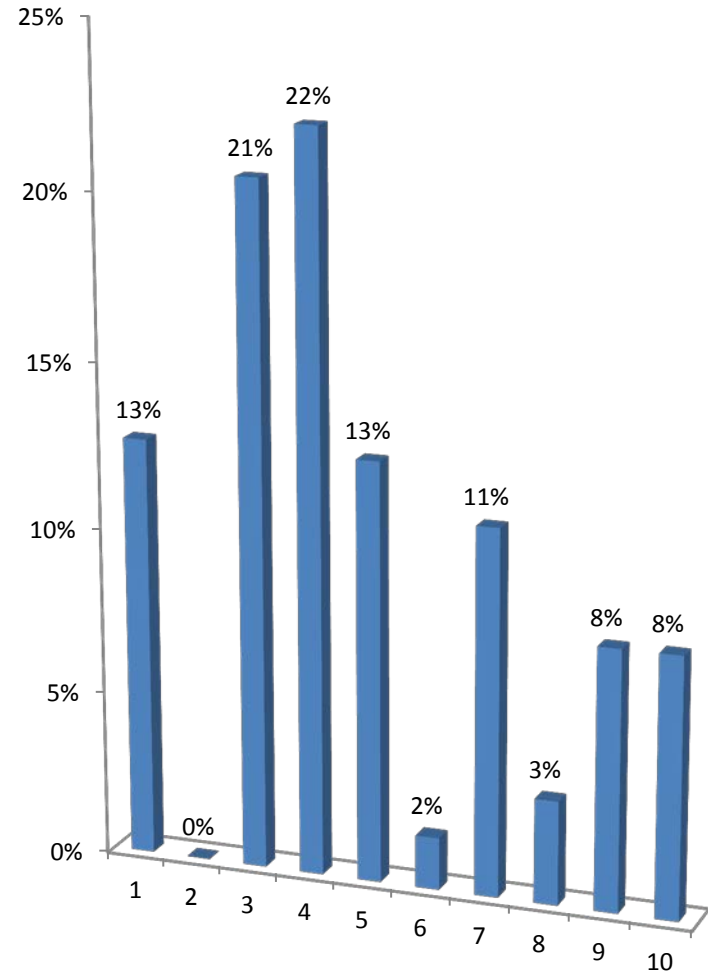
	Responses	
	Percent	Count
Having a good paying job	28%	7
Having Safe neighborhoods	52%	13
Fewer traffic-related accidents	0%	0
Peace of mind about the future	20%	5
Totals	100%	25

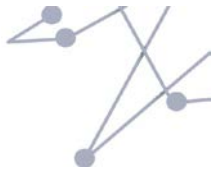




8.) How should the region spend transportation dollars? (select three) (Multiple Choice - Multiple Response)

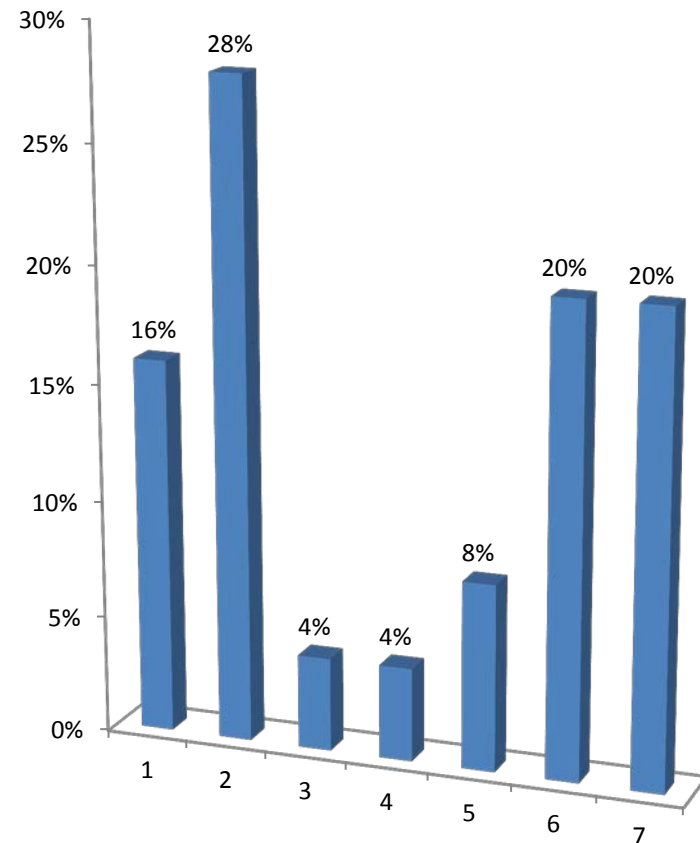
	Responses	
	Percent	Count
Fixing unsafe bridges	13%	8
Building more highways	0%	0
Making existing highways work better	21%	13
Expanding transit service	22%	14
Making existing transit work better	13%	8
Making it easier to transport goods and materials around the region	2%	1
Using technology to improve transportation	11%	7
Supporting more carpooling and shuttles	3%	2
Making our roads safer	8%	5
Making it easier to walk and bike where we need to go	8%	5
Totals	100%	63

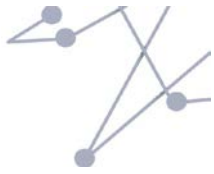




9.) What sources of funds should be used to support transportation? (Multiple Choice)

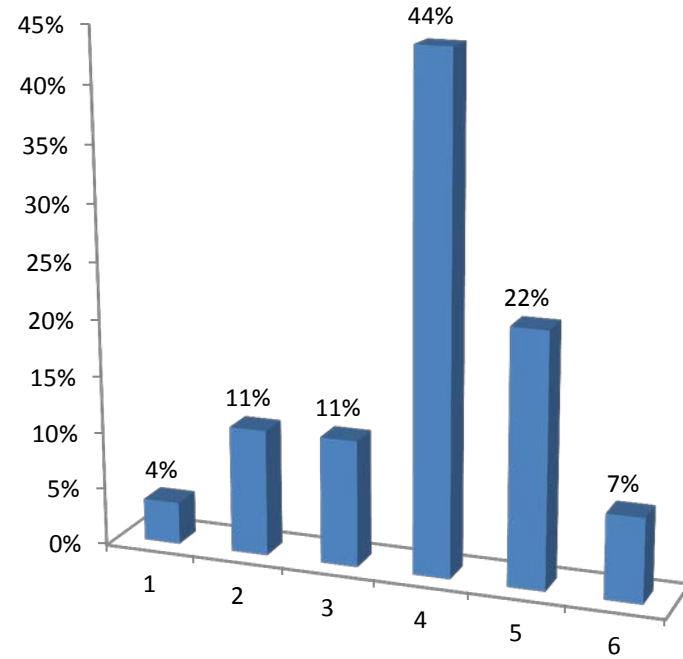
	Responses	
	Percent	Count
Transit fares and tolls	16%	4
Gas taxes	28%	7
General taxes like income tax or sales tax	4%	1
Borrowing more money and paying it off over time	4%	1
Selling "naming" rights to bridges, highways and train stations like we do with stadiums and arenas	8%	2
Working with banks and businesses to share costs and revenue from tolls and fares	20%	5
All of the above	20%	5
Totals	100%	25





10.) Which group best describes your age? (Multiple Choice)

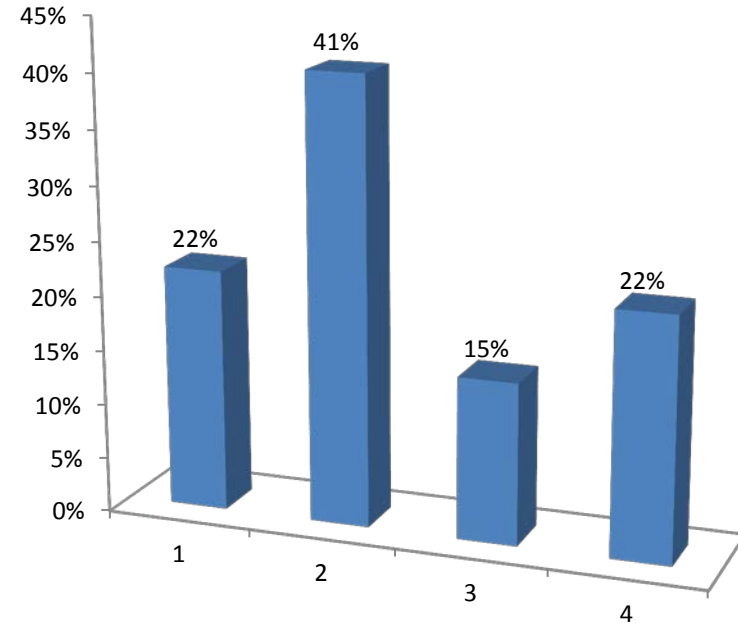
	Responses	
	Percent	Count
Under 25	4%	1
25-34	11%	3
35-44	11%	3
45-64	44%	12
65-74	22%	6
75 years and older	7%	2
Totals	100%	27

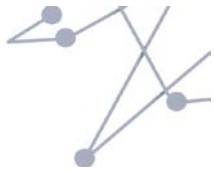




11.) What is your household size? (include yourself) (Multiple Choice)

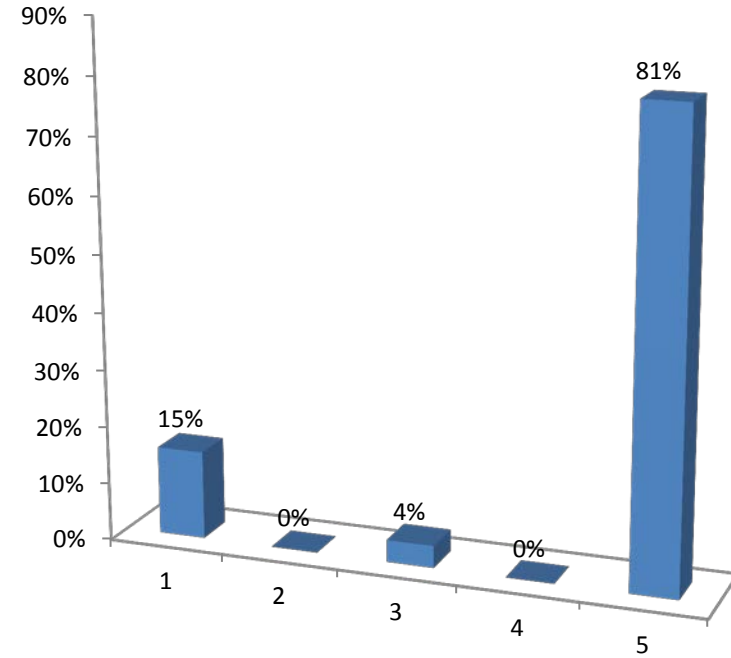
	Responses	
	Percent	Count
1 person household	22%	6
2 person household	41%	11
3 person household	15%	4
4 or more person households	22%	6
Totals	100%	27

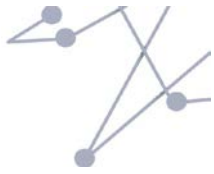




12.) How many persons in your household are under the age of 18? (Multiple Choice)

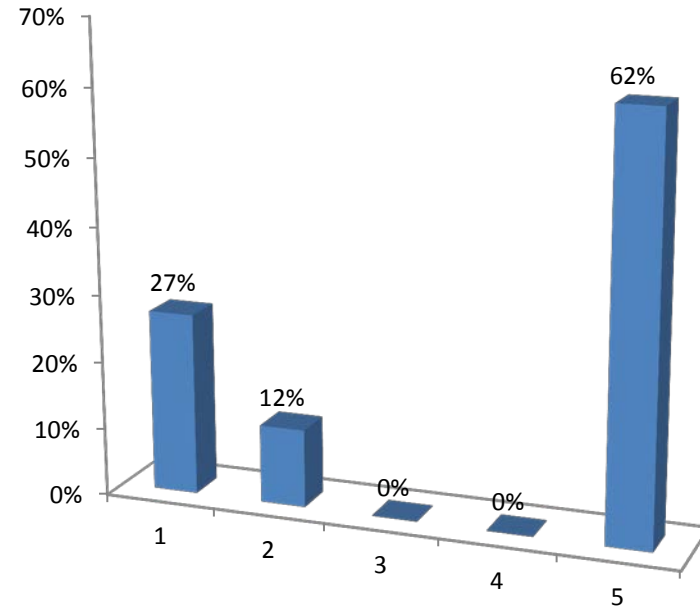
	Responses	
	Percent	Count
One (1)	15%	4
Two (2)	0%	0
Three (3)	4%	1
Four or more (4+)	0%	0
None	81%	21
Totals	100%	26

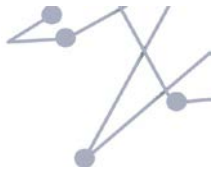




13.) How many persons in your household are over the age of 65? (Multiple Choice)

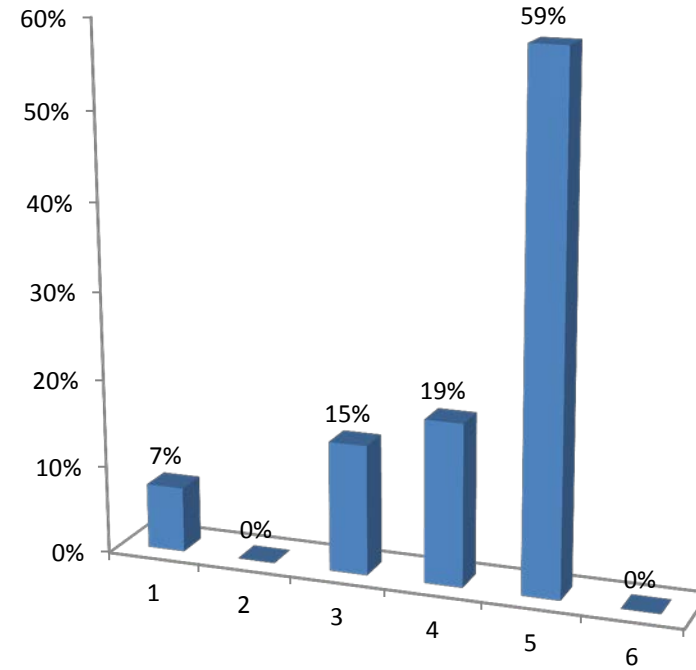
	Responses	
	Percent	Count
One (1)	27%	7
Two (2)	12%	3
Three (3)	0%	0
Four or more (4+)	0%	0
None	62%	16
Totals	100%	26

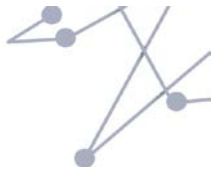




14.) How long have you lived in your current neighborhood? (Multiple Choice)

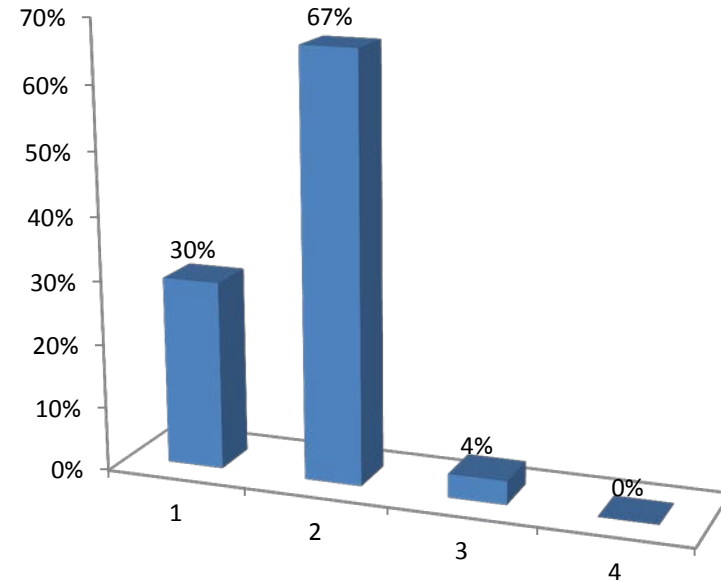
	Responses	
	Percent	Count
Less than a year	7%	2
1-3 years	0%	0
4-10 years	15%	4
11-20 years	19%	5
20+ years	59%	16
I do not live in Northern NJ	0%	0
Totals	100%	27

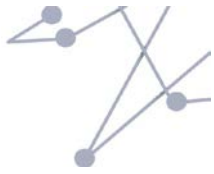




15.) Do you rent or own your home? (Multiple Choice)

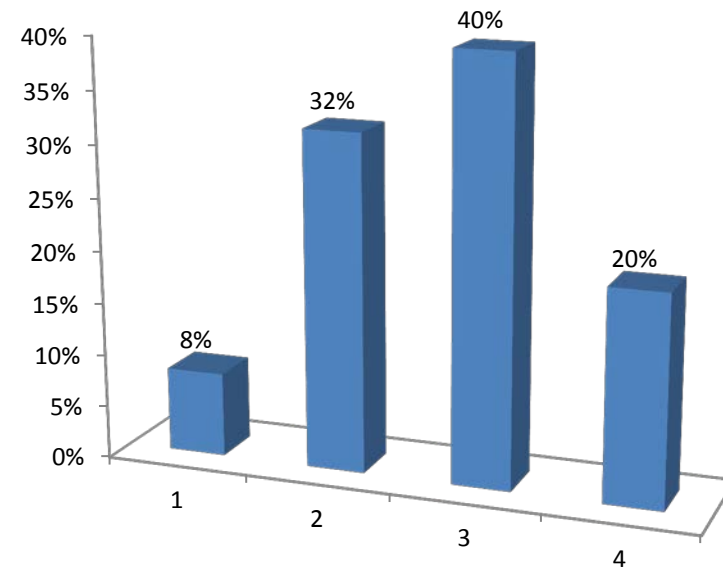
	Responses	
	Percent	Count
Rent	30%	8
Own	67%	18
Residence is provided by others	4%	1
Prefer not to answer	0%	0
Totals	100%	27





16.) How many vehicles are kept at your home for your household's use? (Multiple Choice)

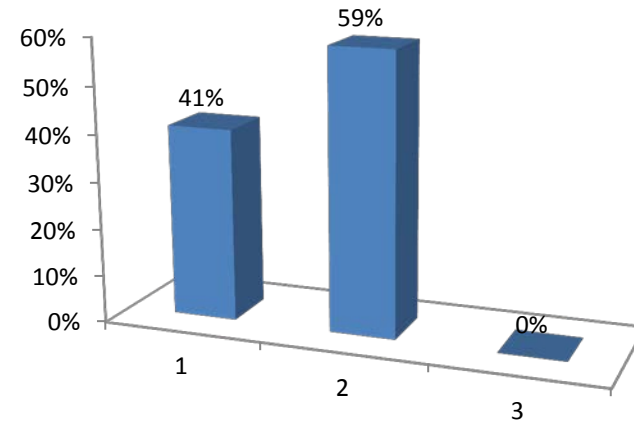
	Responses	
	Percent	Count
No vehicles	8%	2
1 vehicle	32%	8
2 vehicles	40%	10
3+ vehicles	20%	5
Totals	100%	25



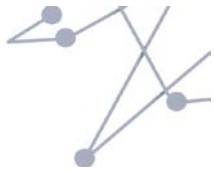


17.) Are you....? (Multiple Choice)

	Responses	
	Percent	Count
Male	41%	11
Female	59%	16
Other	0%	0
Totals	100%	27

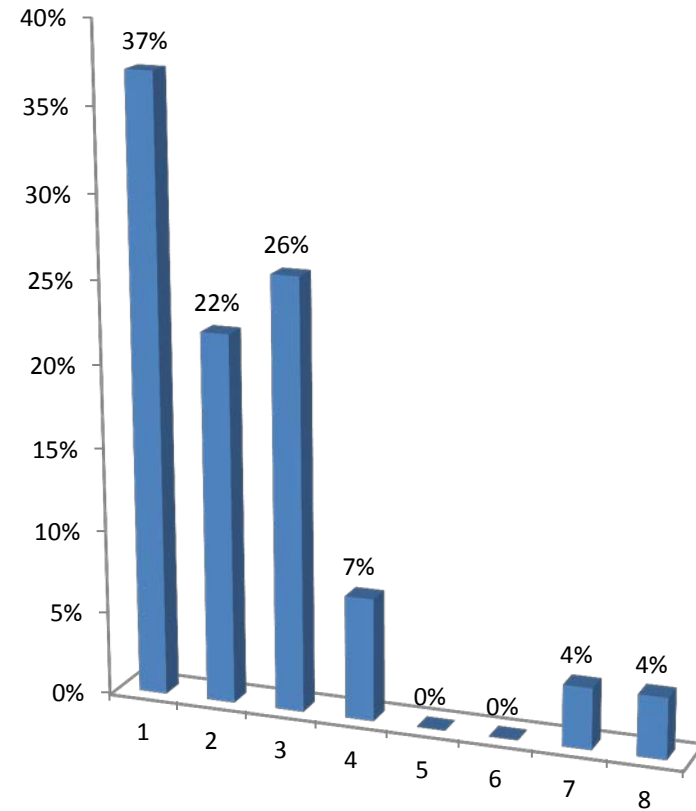


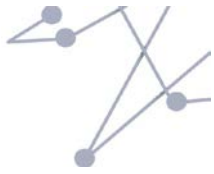
DR



18.) What race or ethnicity best describes you? (Multiple Choice)

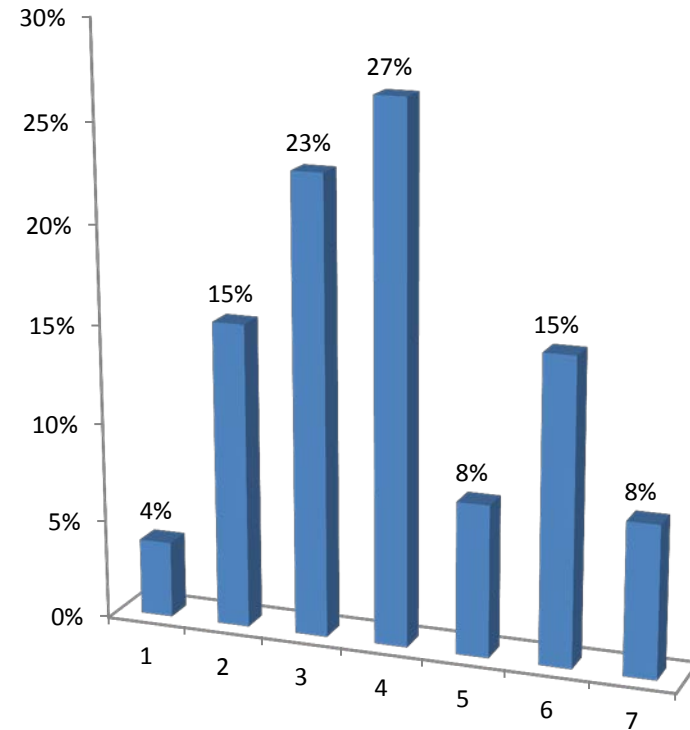
	Responses	
	Percent	Count
White, Not Hispanic	37%	10
Black, Not Hispanic	22%	6
White, Hispanic	26%	7
Black, Hispanic	7%	2
Asian American	0%	0
Native American	0%	0
More than One Race	4%	1
Prefer not to answer	4%	1
Totals	100%	27

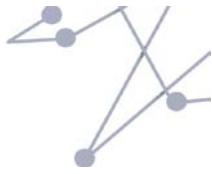




19.) What is your household income? (Multiple Choice)

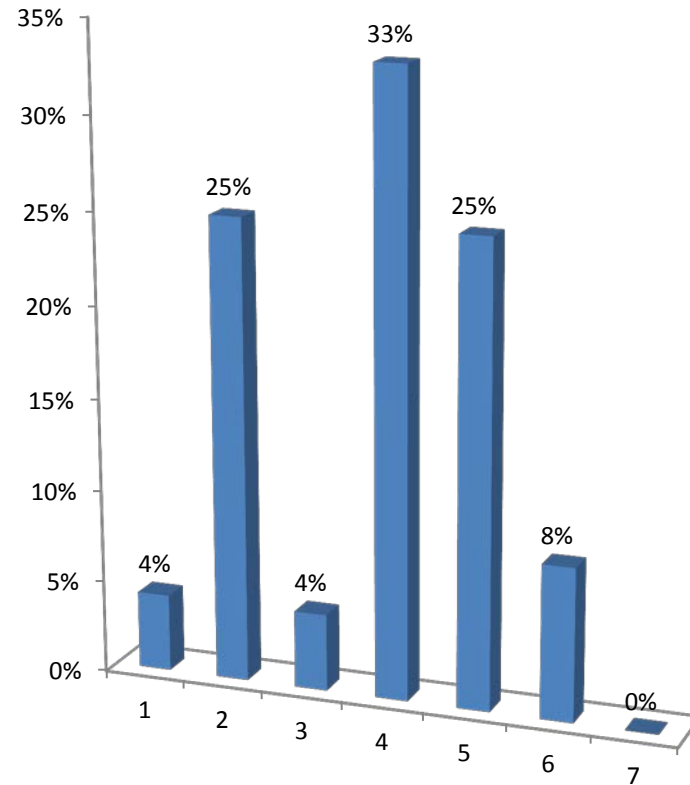
	Responses	
	Percent	Count
\$0 - \$24,999	4%	1
\$25,000 - \$49,999	15%	4
\$50,000 - \$74,999	23%	6
\$75,000 - \$100,000	27%	7
\$101,000 - \$150,000	8%	2
More than \$150,000	15%	4
Prefer not to answer	8%	2
Totals	100%	26





20.) What is the highest degree or level of school completed? (Multiple Choice)

	Responses	
	Percent	Count
Less than High School Diploma or GED	4%	1
Some College	25%	6
Associate's Degree (AA, AS)	4%	1
Bachelor's Degree (BA, BS)	33%	8
Master's Degree	25%	6
Professional Degree beyond Bachelor's Degree (MD, DDS, DVM, LLB, JD)	8%	2
Doctorate Degree (PhD or EdD)	0%	0
Totals	100%	24





Appendix C: Summary of Public Input – LIVE*

What I <u>like</u> about my community from the LIVE perspective...		What I would <u>change</u> about my community from the LIVE perspective...	
1	Like small community familiar with the neighbors, block association to help look out for each other.	1	Too many layers of government.
2	Cultural diversity.	2	Not enough trees.
3	Like access. Neighbors are nice.	3	More affordable housing. Traffic congestion.
4	Good Schools. Good Neighbors.	4	Need more open space.
5	Main Street activities.	5	Bike areas. Enhance parks.
6	Nice area.	6	Schools - need better pre-college. Guidance - more expectation that it is a possibility.
7	Close to work. Nice area.	7	More activities on Main St.
8	Quality of life. Economic development. More recreational programs.	8	Image is poor.
9	Easy to walk to shopping and recreation.	9	Traffic not pedestrian friendly - moves too quickly.
10	Walking community. Proximity to services.	10	Repair the streets. Create bike lanes.
11	Close to public transit.	11	Left turns impede traffic - should be new choice of straight or left.
12	"Easy City" - not too frantic or self-absorbed.	12	Some of neighbors - for better neighborhood watch.
13	Quite area/neighborhood. Close to train station. Safe.	13	Police presence (must increase).
14	Housing options.	14	Lower crime stats.
15	Close to transportation.	15	More parks. After school programs.
16	Convenient location.	16	No changes necessary at this time.
17	Main street (businesses and shops). Diversity.	17	More community police. More programs for kids needing special education.
18	Open space and recreation access.	18	Increase in the number of people caring for their neighborhood.
19	Housing options.	19	Housing options. Not family friendly.
20	I would like to add new things.	20	More police response (less stolen cars).
21	Calm neighborhoods.	21	Reduce crime. Reduce police response time - this could improve crime rate.
22	I would like to have a street instead of an avenue. Fewer taxes.	22	Velocity in my area. Valencos rest street. Parking.
		23	It is very difficult to find a home to live in with more things.
		24	Doesn't like open space for waiting.
		25	Change so that there are more accessible stops in the buildings and that there is shelter for sitting.
		26	Car thefts.

An effort was made to record participants responses verbatim. Some notes were unreadable, and a scanned copy can be found in **Appendix G.*



Appendix C: Summary of Public Input – WORK*

What I <u>like</u> about my community from the WORK perspective...		What I would <u>change</u> about my community from the WORK perspective...	
1	Cultural diversity. Interaction with clients.	1	More business diversity.
2	I don't like the diversity of the work.	2	Improve communications.
3	Opportunity to socialize different cultures. Attend social events. Make decent money.	3	Zoning laws.
4	Attracting new business. Looking for new business development, marketing.	4	Creating job opportunities for community.
5	Neighborhood where I work.	5	Change the way and the rules that I have to follow.
6	Retired. Dealing with children.	6	Regulations - overregulated industry
7	Live in WBR. Student- urban planning. Public transportation. Work in NJ making more safety.	7	Transportation laws -- trucking laws.
8	Like to work with the community. Like art. Explore different possibilities.	8	Change 12-hour shifts to 8-hour.
9	Community service senior aid. Recreation. Short commute. Good hours. Not stressful.	9	None.
10	Close proximity to work. Access to public transportation.	10	Better transportation to get seniors around.
11	Live close to work.	11	Better job training across the board.
12	Very Convenient to NYC and Newark.	12	Not enough high paying and high quality jobs in the area.
13	Being retired.	13	More art galleries in the area. There are none.
14	I live one mile away from work site.	14	Preserve more open space.
15	Opportunity for entrepreneurs.	15	More opportunity for fulfilling employment. Respect for workers.
16	Close proximity to work.	16	More trades training.
17	Elizabeth is traditionally an immigrant community that can get a foothold and achieve success.	17	Too far from Paris.
18	Ability to work with public/private sector and government.	18	Would like to have more funds to be able to employ more able.
19	Get to work from home.	19	Would like to work in more social workplace.
20	My job working with seniors. Developed skills.	20	Better salaries (increased). More clean manufactories for better environment.
21	Attractiveness of well paying jobs in the region.	21	More/stronger effort to attract more manufacturing and white collar jobs (need specific office).
22	Workforce training @ UCC and the ability to expand education.	22	Increase opportunities for non-college type jobs.
23	I don't like anything.	23	I would like more jobs.
		24	I would like to see the school more vigilant and comprehensive with students who are poorly misunderstood.
		25	At work I would like an increase in salary, improved transportation and that they are paid for in the form of benefits.
		26	I'd like more jobs.
		27	Diversity of jobs.

An effort was made to record participants responses verbatim. Some notes were unreadable, and a scanned copy can be found in **Appendix G.*



Appendix C: Summary of Public Input – GETTING AROUND*

What I <u>like</u> about my community from the perspective of GETTING AROUND....		What I would <u>change</u> about my community from the perspective of GETTING AROUND...	
1	Access to bus. Easily walkable.	1	Air quality.
2	Nothing.	2	Better public transportation in future.
3	Nothing.	3	Quality roads - potholes. Parking shortage. (Need more.) Use vacant land.
4	Walk in the area is good exercise.	4	Light-rail. Parking. Rapid Bus.
5	Everything close to home and work	5	No changes.
6	The ability to access transportation. Can walk to bus easily.	6	More bus service on weekends and holidays.
7	Quiet. Close to job. Close to transportation. Close to major highway	7	Children center not accessible.
8	Access to transit. Things within walking/biking distance.	8	Too much traffic. Too much noise, horns. Less traffic. Intersections no crosswalk.
9	5 min to NJ Transit. Good things in walking distance. Near highway. Near many stores, transit.	9	Create a ferry system to NYC.
10	Proximity to services and public transportation.	10	Control traffic patterns.
11	Convenience. Safe.	11	Have more security.
12	Small city and can bike and walk.	12	Road conditions - repairs needed.
13	Availability of public transit.	13	Tolls to NY high.
14	Safe areas and neighborhood.	14	Improve public safety.
15	Easy access to public transit and highways	15	Bike lanes.
16	Availability of varied transportation.	16	Address congestion and traffic on roads by building a light rail system.
17	Get around easily.	17	Not enough arts and culture.
18	You can get anywhere by public transportation.	18	More and cheaper public transportation.
19	Availability of bus, train and other modes of transportation.	19	Need light rail to new ferry service to NY.
20	Many options to get around. Recreation, entertainment, getting to NY bus, train, drive.	20	Low polluting, light rail system. Ferry system.
21	Support Coop. Talk with co-passengers.	21	Frequency of transportation (times, days, etc.) More incentives to use mass transit.
22	Proximity of the bus.	22	More bus transportation.
23	I take the bus and I am close to the stop.	24	Broader/more frequent bus/train schedules.
24	I like connecting to my job.	25	Transit on time.
		26	I don't like how long the bus takes (riding).

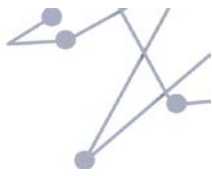
An effort was made to record participants responses verbatim. Some notes were unreadable, and a scanned copy can be found in **Appendix G.*



Appendix D: Priority Objectives – Missing

The following table is a list of ideas that participants felt were missing from the Goals and Objectives presented at the workshop.

LIVE		WORK		GETTING AROUND	
1	Create more jobs that are available to people who don't have college education and create integrated training opportunities for those jobs. (eg infrastructure improvements that are "green")	1	Health Insurance	1	More transportation by water.
2	Improved public education system.	2	Trades Training	2	Car sharing and bike sharing.
3	More access to vocational training.	3	Apprenticeships and vocational training. Connecting students to opportunities to learn trade and craft skills.	3	Bicycle and pedestrian safety education for cyclists, drivers, and pedestrians.
4	More opportunities for adult education.	4	Create jobs that will improve public green space, like a trail system. These jobs should be white collar (planners) and blue collar (grounds crew and other physical development).	4	The city needs bike lanes. This will increase bike usage, which decreases traffic and pollution and increases public health.
5	More programs for kids with special needs.	5	Regional trail system to link pedestrian and cyclists to get to and from work.		
6	Downtown facades should be maintained.				
7	Arts across cultures should be enabled.				
8	Decrease density of housing to more single family housing to encourage family interaction.				
9	Encourage a mixture of national businesses (eg chain stores and small business)				
10	Regional pedestrian and bike paths.				
11	Reduce layers of government.				

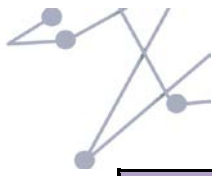


Appendix E: Priority Objectives

At each station, participants were asked to rank the Objectives within the Goals, including any added Objectives from the attendees. Each participant was able to vote for a total of three objectives, prioritizing them as “Most Important” (represented with a green dot), “Very Important” (blue dot), and “Important” (yellow dot). The votes were weighted according to the following system: Most Important received 3 points, Very Important 2 points, Important 1 point. Then, each Objective received a total score. Total = (Most Important x3) + (Very Important x 2) + (Important)

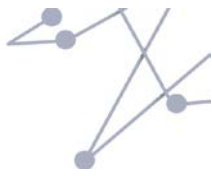
Appendix E: Priority Objectives- LIVE

LIVE					
Goal 1 - Strengthen the region's economy	Most Important by weight	Very Important by weight	Important by weight	Total	Red Dot*
Keep and create well-paying jobs	24	4	0	28	
Ensure infrastructure (transportation, utilities and communications) is in good repair and can support economic development	0	8	1	9	
Increase the economy's ability to adapt to change	0	6	0	6	
Increase regional self-sufficiency	0	0	0	1	1
Goal 2 - Ensure communities are safe, healthy & great places to live					
Create safe, stable neighborhoods with high-quality housing	15	0	3	18	
Improve public health	0	2	1	3	
Improve access to local parks and recreation	3	8	1	12	
Improve access to community resources such as libraries, senior centers, youth activities	0	2	2	4	
Preserve and enhance the character of existing downtowns and neighborhoods	6	0	2	8	
Improve access to arts and cultural resources	3	2	0	5	



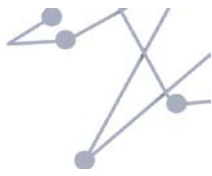
LIVE					
Goal 3 - Improve everyone's access to opportunity	Most Important by weight	Very Important by weight	Important by weight	Total	Red Dot*
Connect where people live with where they need to go	0	2	2	4	
Maintain and improve the quality of schools	6	2	3	11	
Create inclusive, mixed-income neighborhoods	0	2	2	4	
Reduce combined transportation and housing costs	0	2	1	3	
Goal 4 - Enhance efficiency & conserve land					
Increase investment near existing housing, jobs & transportation	6	0	0	6	
Maintain & expand vibrant downtowns and "main streets"	0	4	1	5	
Encourage development of compact neighborhoods with a mix of housing, shopping and services	0	2	1	3	
Goal 5 - Protect & enhance environment					
Preserve open space and natural areas	0	0	1	1	
Improve air quality	3	0	0	3	
Reduce potential impacts of climate change	0	0	0	0	
Increase ability to respond to and recover from extreme weather events	0	0	0	0	
Ensure adequate water supply	0	0	2	2	
Improve water quality	0	0	0	0	
Direct development away from environmentally sensitive areas	0	0	0	0	
Preserve wildlife habitat	0	0	0	0	
OTHER					
Regional Ped/Bike Paths	3	0	0	3	
Goal 5 (in general)	0	2	0	2	
Reducing Crime	0	0	1	1	
Existing infrastructure	3	0	0	3	
Access to open space and recreation	3	0	0	3	

*Red colored dots were distributed at the stations, but participants were asked to use these at the Together North Jersey Station only. One participant did not realize this, so he/she may have placed a total of four dots at this station. The red dots were tallied as one point.



Appendix E: Priority Objectives- WORK

WORK				
Goal 1 - Strengthen the region's economy	Most Important by weight	Very Important by weight	Important by weight	Total
Keep and create well-paying jobs	30	2	0	32
Ensure infrastructure (transportation, utilities and communications) is in good repair and can support economic development	0	0	5	5
Increase the economy's ability to adapt to change	0	2	1	3
Increase regional self-sufficiency	0	4	0	4
Goal 2 - Ensure communities are safe, healthy & great places to live				
Create safe, stable neighborhoods with high-quality housing	3	12	2	17
Improve public health	9	2	1	12
Improve access to local parks and recreation	0	2	0	2
Improve access to community resources such as libraries, senior centers, youth activities	0	4	2	6
Preserve and enhance the character of existing downtowns and neighborhoods	9	2	3	14
Improve access to arts and cultural resources	3	0	0	3
Goal 3 - Improve everyone's access to opportunity				
Connect where people live with where they need to go	3	6	0	9
Maintain and improve the quality of schools	3	4	6	13
Create inclusive, mixed-income neighborhoods	0	2	0	2
Reduce combined transportation and housing costs	3	2	0	5



WORK				
Goal 4 - Enhance efficiency & conserve land	Most Important by weight	Very Important by weight	Important by weight	Total
Increase investment near existing housing, jobs & transportation	0	2	0	2
Maintain & expand vibrant downtowns and "main streets"	9	0	0	9
Encourage development of compact neighborhoods with a mix of housing, shopping and services	3	0	1	4
Goal 5 - Protect & enhance environment				
Preserve open space and natural areas	0	4	1	5
Improve air quality	0	0	0	0
Reduce potential impacts of climate change	0	0	0	0
Increase ability to respond to and recover from extreme weather events	0	0	1	1
Ensure adequate water supply	0	0	1	1
Improve water quality	0	0	0	0
Direct development away from environmentally sensitive areas	0	0	0	0
Preserve wildlife habitat	0	0	0	0
OTHER				
Well-paying jobs	3	0	0	3



Appendix E: Priority Objectives- GETTING AROUND

GETTING AROUND					
Goal 1 - Strengthen the region's economy	Most Important by weight	Very Important by weight	Important by weight	Total	Red Dot*
Keep and create well-paying jobs	12	2	3	17	
Ensure infrastructure (transportation, utilities and communications) is in good repair and can support economic development	3	0	4	7	
Increase the economy's ability to adapt to change	0	2	0	2	
Increase regional self-sufficiency	3	0	0	3	
Goal 2 - Ensure communities are safe, healthy & great places to live					
Create safe, stable neighborhoods with high-quality housing	15	2	3	20	
Improve public health	0	2		2	
Improve access to local parks and recreation	6	4	2	12	
Improve access to community resources such as libraries, senior centers, youth activities	0	0	0	0	
Preserve and enhance the character of existing downtowns and neighborhoods	3	4	1	8	
Improve access to arts and cultural resources	6	2	1	9	
Goal 3 - Improve everyone's access to opportunity					
Connect where people live with where they need to go	6	6	2	14	
Maintain and improve the quality of schools	3	8	0	11	
Create inclusive, mixed-income neighborhoods	0	0	1	1	
Reduce combined transportation and housing costs	0	2	2	4	



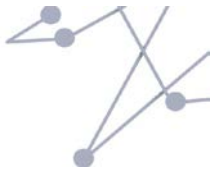
GETTING AROUND					
Goal 4 - Enhance efficiency & conserve land	Most Important by weight	Very Important by weight	Important by weight	Total	Red Dot*
Increase investment near existing housing, jobs & transportation	0	6	0	6	
Maintain & expand vibrant downtowns and "main streets"	0	0	2	2	
Encourage development of compact neighborhoods with a mix of housing, shopping and services	3	2	2	7	
Goal 5 - Protect & enhance environment					
Preserve open space and natural areas	0	0	0	0	
Improve air quality	3	2	0	5	
Reduce potential impacts of climate change	0	2	1	3	
Increase ability to respond to and recover from extreme weather events	0	0	0	0	
Ensure adequate water supply	0	0	0	0	
Improve water quality	0	0	0	0	
Direct development away from environmentally sensitive areas	0	0	0	0	
Preserve wildlife habitat	0	0	0	0	
OTHER					
Connecting transp., housing and jobs	6	0	0	6	
Bike lanes	3	0	0	3	
Reducing traffic congestion	0	0	0	1	1

*Red colored dots were distributed at the stations, but participants were asked to use these at the Together North Jersey Station only. One participant did not realize this, so he/she may have placed a total of four dots at this station. The red dots were tallied as one point.



Appendix F: Together North Jersey Station

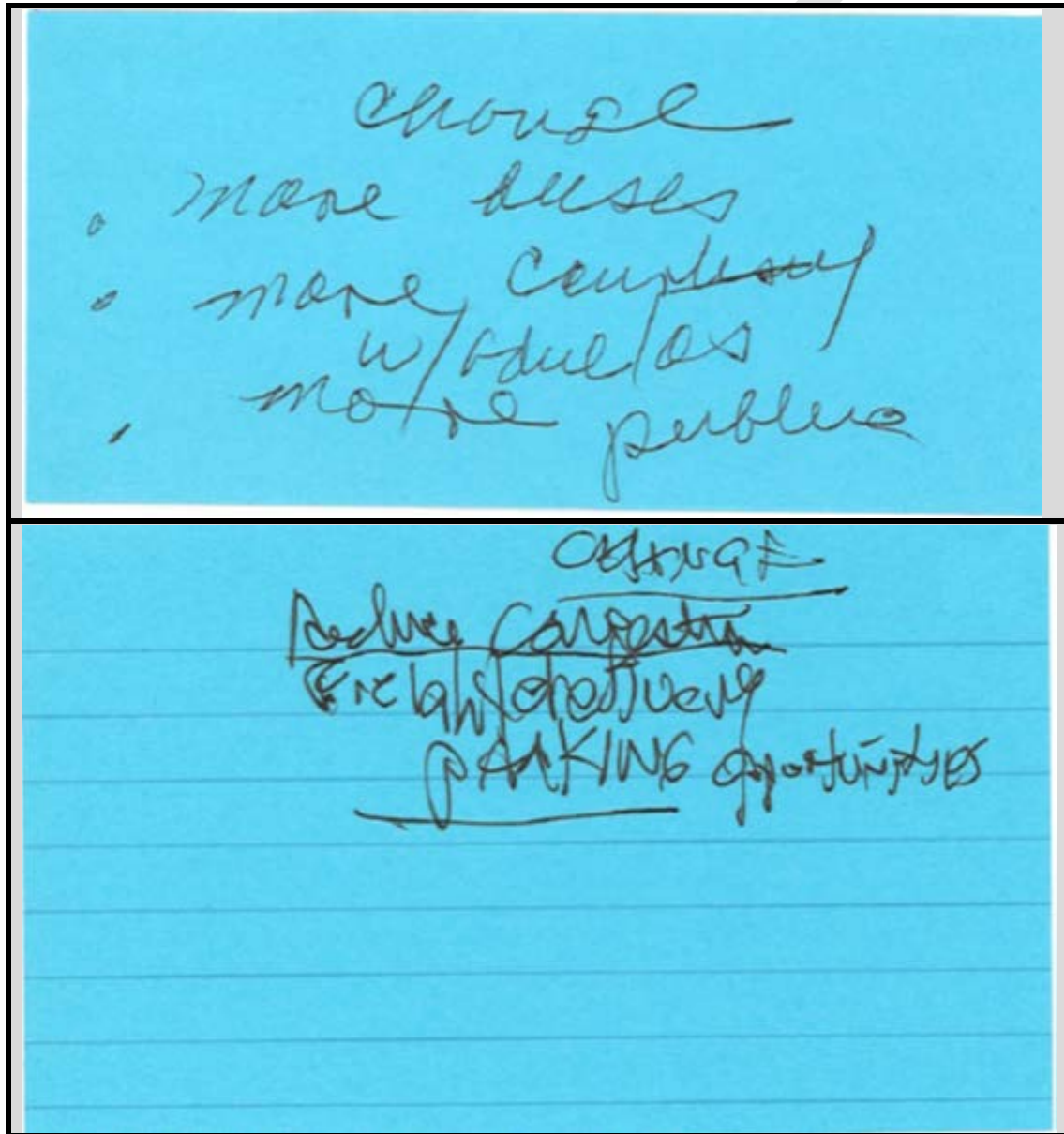
COORDINATE	
Goal 6 - Address regional growth issues	Totals
Align existing plans, programs and regulations at all levels of government	0
Foster collaboration between federal, state, county and local governments to address regional growth issues	2
Maintain up-to-date, coordinated local, regional and State functional plans that reflect these goals	4
Provide a regional framework for making decisions about capital investments, programs, regulations and major development applications	2
Ensure a broad cross-section of residents, businesses and government are engaged in planning efforts, including those traditionally under-represented in regional planning processes	10
Respect property rights during planning and implementation	4
Total:	22

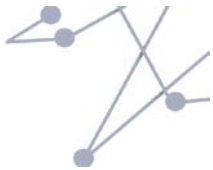


Appendix G: Unreadable Public Input Responses

Session Name: City of Elizabeth, 3/4/13

GETTING AROUND: Change

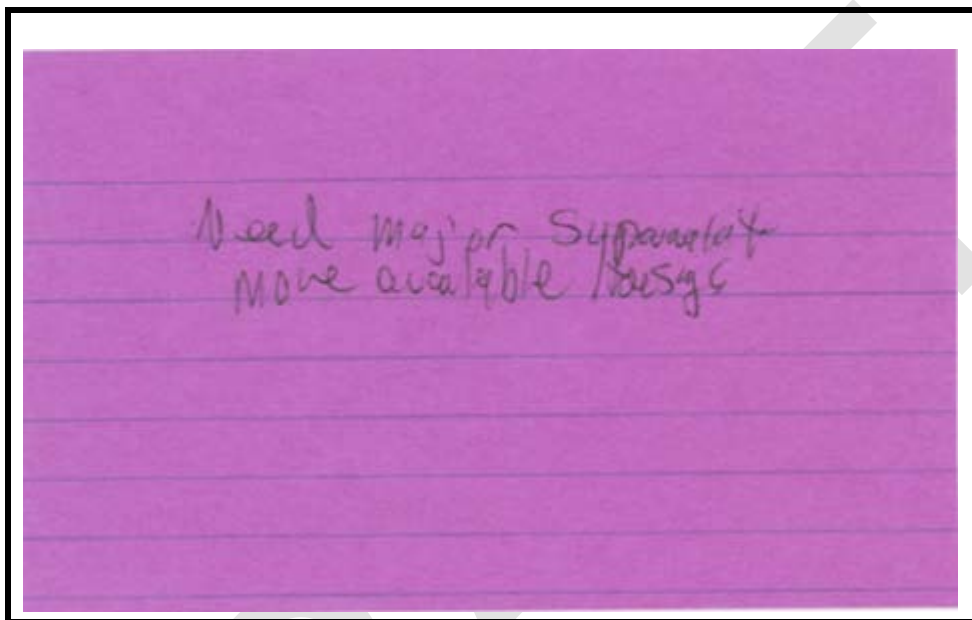




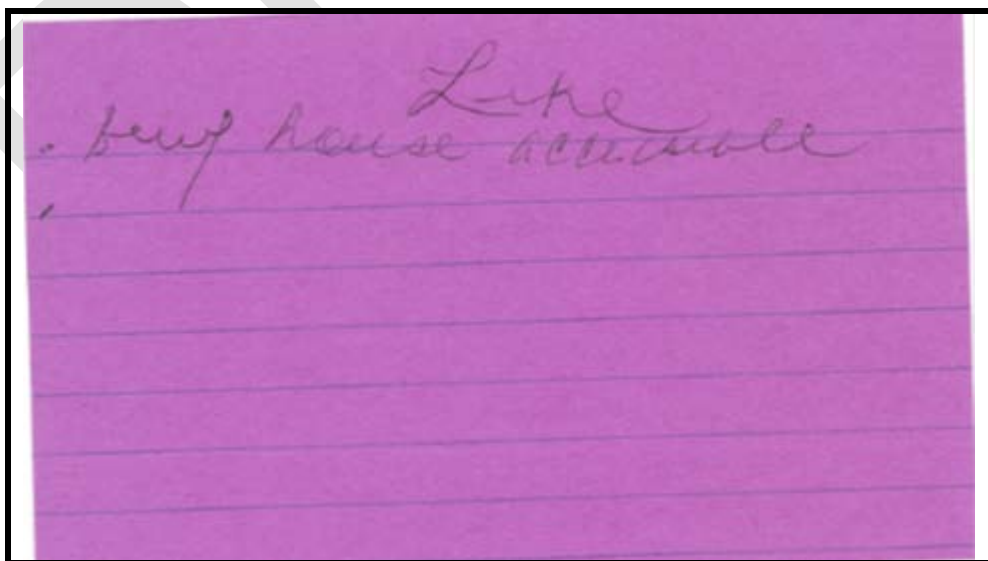
Appendix G: Unreadable Public Input Responses

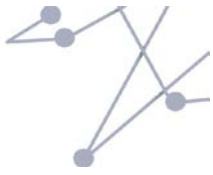
Session Name: City of Elizabeth, 3/4/13

LIVE: Change



LIVE: Like

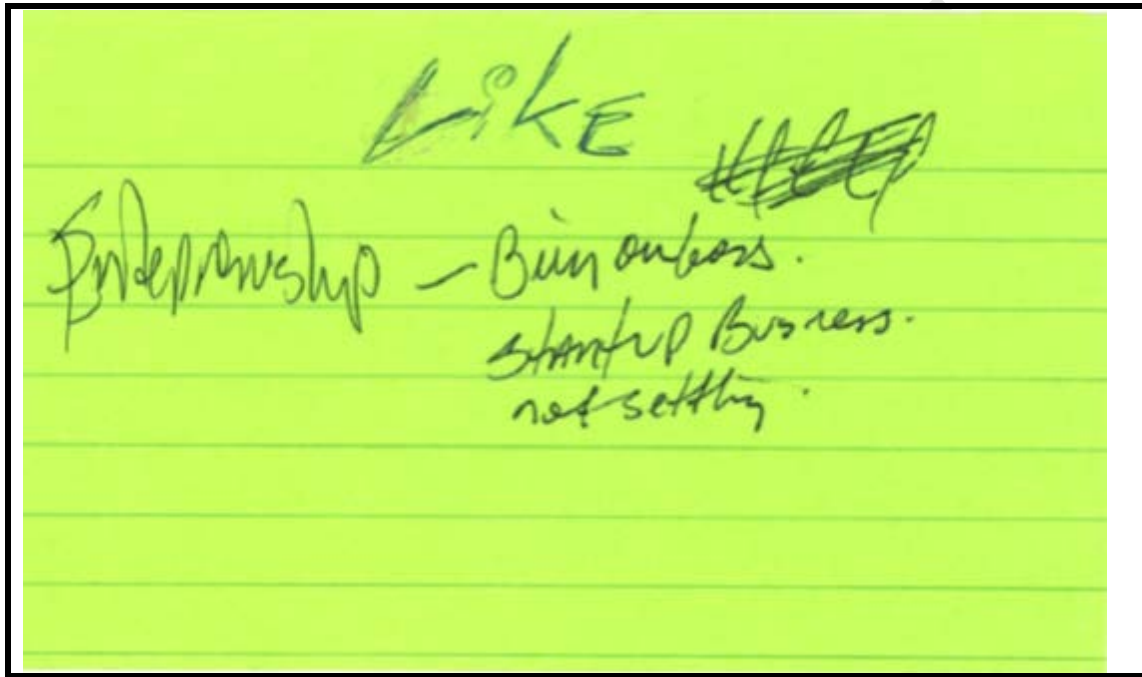




Appendix G: Unreadable Public Input Responses

Session Name: City of Elizabeth, 3/4/13

WORK: Like



DR