

ABOUT THE EDGEWATER BEACH HOUSE:

The Edgewater Beach House shall be the “hub” of activity for the Edgewater Beach portion of Edgewater Park. The project shall incorporate several complimentary uses, including but not limited to restrooms, concessions, food and beverage operations, sundry/retail sales, recreational equipment rental, interpretive space, changing stations, outdoor showers and foot wash stations, entertainment spaces, viewing decks, life guard / employee / service spaces, and other recreational uses. Additionally, hardscape items such as plazas, patios, and spray grounds, and softscape items such as native beach appropriate plantings and sustainable stormwater management practices are being considered for the project.

The project team led by Bialosky + Partners Architects was selected by the Cleveland Metroparks Board for the design of the Project in the summer of 2014. The Bialosky led team includes Environmental Design Group (civil and landscape architecture), Terracon (geotech), Karpinski Engineering (MEP), Barber & Hoffman (structural) and Predictive Service (LEED commissioning).

The design and construction of the Beach House and surrounding site improvements shall incorporate LEED design principles and embrace the Cleveland Metroparks’ Green Infrastructure and Sustainability guiding principles recognized in the Cleveland Metroparks 2020 Emerald Necklace Centennial Plan. The Beach House building is expected to secure LEED Silver designation through an enhanced commissioning process.

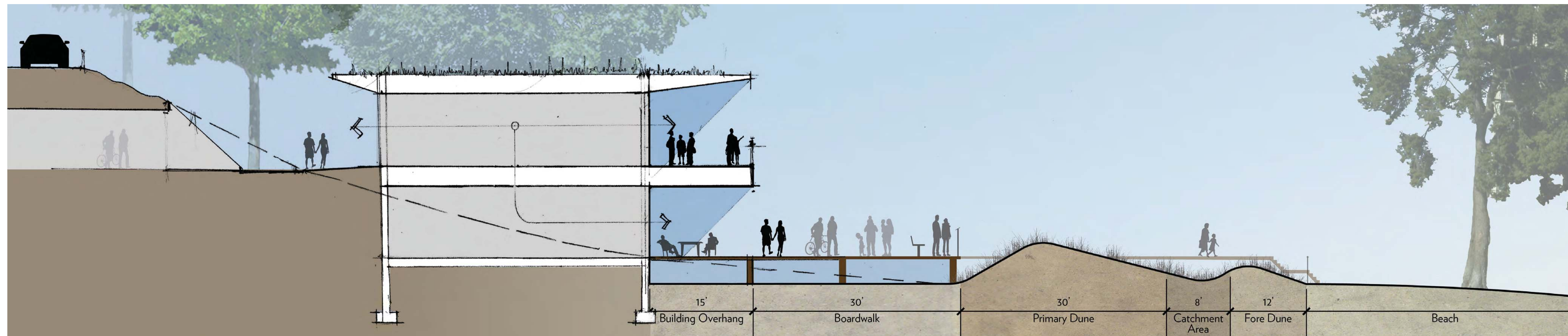
The project is currently in programming and conceptual design, with a construction manager to be selected in early 2015. The project budget is \$3.4 - \$4 million for the initial phase of work. Construction of the new facility is expected to start in late Summer of 2015, with completion set for late Spring of 2016.



EDGEWATER BEACH SITE & CONTEXT



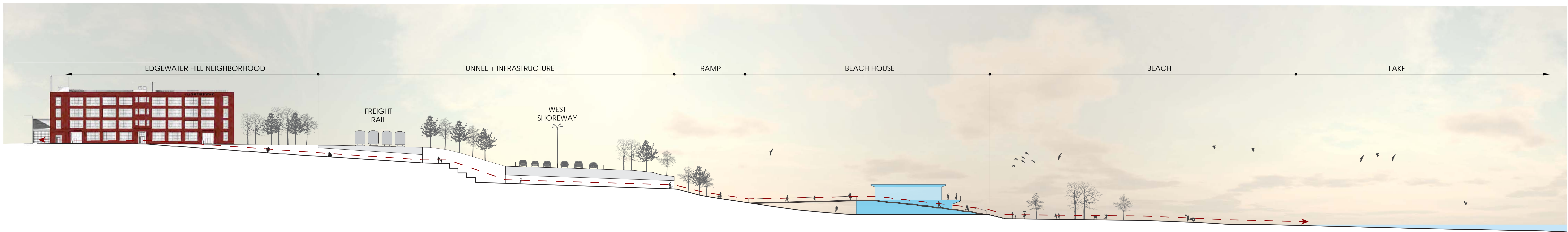
POTENTIAL BEACH HOUSE SITES



INITIAL CONCEPT SKETCHES



SITE CONCEPT SKETCH



PROPOSED SITE CONCEPT SECTION



DRAWING LEGEND

- ① NEW EDGEWATER BEACH HOUSE
2 LEVELS, +/- 9200 SF
- ② ACCESSIBLE PEDESTRIAN
RAMP UP TO SECOND LEVEL
- ③ BRIDGE CONNECTION TO BEACH
HOUSE 2ND LEVEL FROM W. 76TH
ST. PEDESTRIAN TUNNEL
- ④ IMPROVED DIRECT CONNECTION
TO BEACH FROM TUNNEL
- ⑤ FUTURE LAKEFRONT WEST MULTI-
USE PED & BIKE PATH (NOT PART
OF THIS PROJECT)
- ⑥ IMPROVED PARKING LOT
CIRCULATION & DROP-OFF
- ⑦ IMPROVED PEDESTRIAN ENTRY
EXPERIENCE
- ⑧ NEW PUBLIC PLAZA
- ⑨ GATHERING AREA
- ⑩ COMMUNITY PORCH
- ⑪ EVENT PLATFORM / STAGE
- ⑫ SAND MIGRATION CONTROL
- ⑬ GATHERING SPACES + EVENT
VENDOR AREAS
- ⑭ IMPROVED PATH ALONG BEACH
- ⑮ SPRAY WATER FOUNTAIN
FEATURE

CONCEPTUAL SITE PLAN - POTENTIAL BEACH MASTERPLAN

PROGRAM
THE RECIPE: ESSENTIAL INGREDIENTS

PUBLIC SPACES

-  SUNDRY SHOP
-  DINING / MULTI-USE SPACE
-  ROOFTOP PATIO DINING
-  HARDSCAPE
-  LANDSCAPE
-  COMMUNITY PORCH
-  VIEWING DECK

SEASONAL + TEMPORARY

-  SEASONAL POP-UPS

COMFORT STATION

-  WOMEN'S RESTROOM
-  MEN'S RESTROOM
-  STAFF RESTROOM
-  UNISEX RESTROOM
-  FAMILY RESTROOM
-  LOCKER AREA
-  OUTDOOR SHOWERS

STAFF

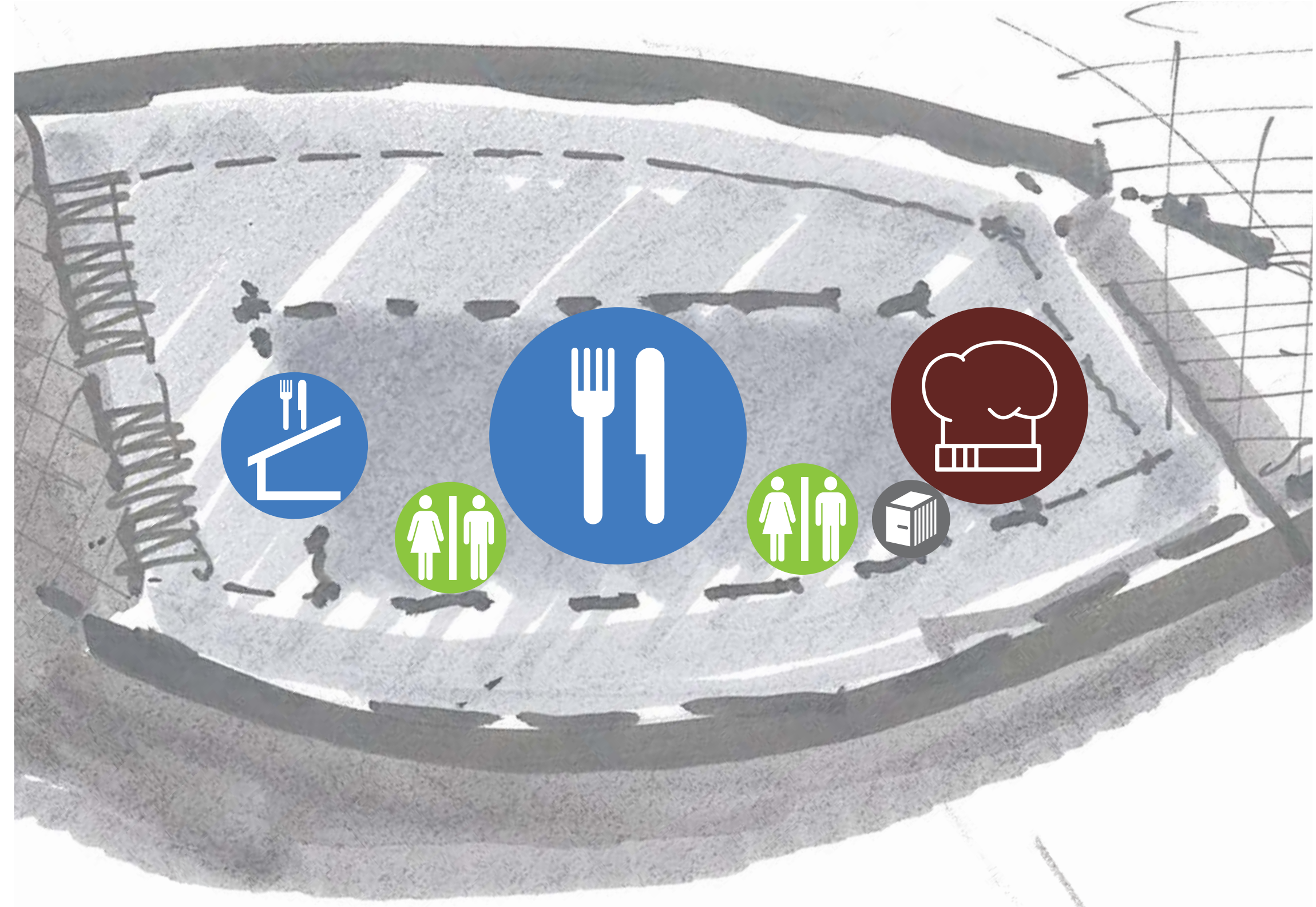
-  STAFF OFFICE
-  STAFF ROOM
-  LIFEGUARD ROOM

KITCHEN & SUPPORT

-  KITCHEN SPACES
-  STORAGE
-  JANITOR CLOSET
-  TRASH & RECYCLING

DRAWING LEGEND

- ① NEW EDGEWATER BEACH HOUSE
2 LEVELS, +/- 9200 SF
- ② ACCESSIBLE PEDESTRIAN
RAMP UP TO SECOND LEVEL
- ③ BRIDGE CONNECTION TO BEACH
HOUSE 2ND LEVEL FROM W. 76TH
ST. PEDESTRIAN TUNNEL
- ④ IMPROVED DIRECT CONNECTION
TO BEACH FROM TUNNEL
- ⑤ FUTURE LAKEFRONT WEST MULTI-
USE PED & BIKE PATH (NOT PART
OF THIS PROJECT)
- ⑥ IMPROVED PARKING LOT
CIRCULATION & DROP-OFF
- ⑦ IMPROVED PEDESTRIAN ENTRY
EXPERIENCE
- ⑧ NEW PUBLIC PLAZA
- ⑨ GATHERING AREA
- ⑩ COMMUNITY PORCH



CONCEPTUAL FLOOR PLAN - SECOND LEVEL



CONCEPTUAL FLOOR PLAN - GROUND LEVEL



CONCEPTUAL SITE PLAN - POTENTIAL PHASE 1



CONCEPTUAL MASSING VIGNETTE - VIEW FROM 76TH ST. TUNNEL



CONCEPTUAL MASSING VIGNETTE - EAST VIEW



CONCEPTUAL MASSING VIGNETTE - WEST VIEW