

Marshall University Campus Master Plan

DRAFT MASTER PLAN

VIRTUAL TOWN HALL SUMMARY | SEPTEMBER 9, 2013

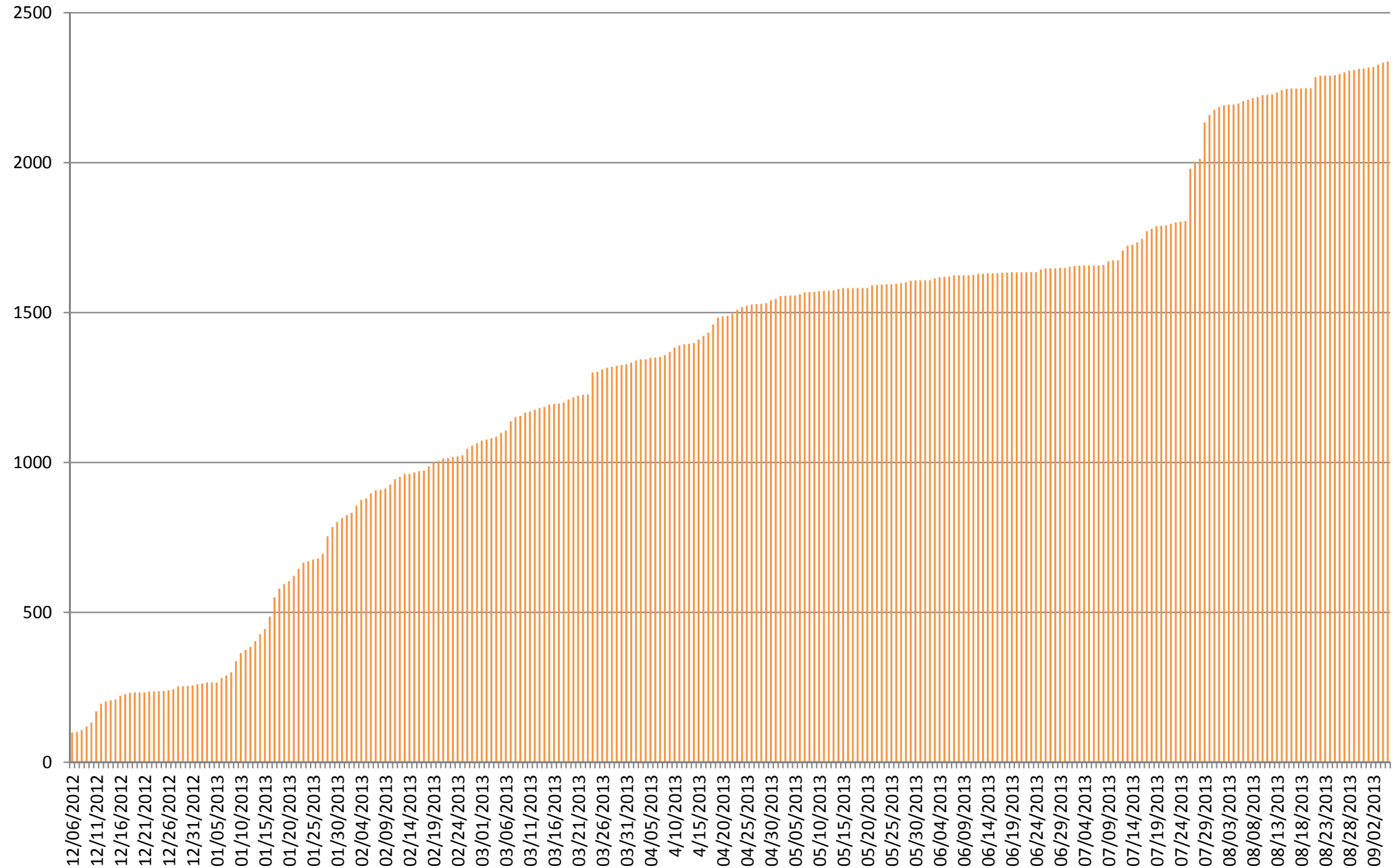
SMITHGROUPJJR | Paulien & Associates | Michael Baker Jr. | The Protection Engineering Group | Corbin Design

Campus and Community Engagement

Virtual Town Hall Overview

- Over 2,300 Unique Visitors have been to MindMixer since launch
- 185 Participants
- 108 Votes on the Preliminary Master Plan Topics and Surveys

Total Users Since Launch



Which buildings are most in need of improvement? What is the best place for learning on campus? What makes it great? Where is your favorite place to study? What is the least successful place for learning on campus? What ideas do you have about facilities for learning on campus? Do you live in on-campus housing? What improvements would you suggest to on-campus housing? Are there improvements you would make to dining facilities on campus? Are there enough dining opportunities on campus? Would you add more dining facilities? What type of dining options would you add? What is the best part of student life at Marshall? What are your thoughts about the Student Center? How do you like the Student Center? What campus place best represents Marshall University? Where is your favorite place on campus? What would you like to see on campus, what would it be? Where is your least favorite place on campus? What recreation activities or facilities do you use? What improvements or additions to recreational activities and facilities would you want to see on campus? Are athletics well-integrated into the campus? Where do you go to hang out with friends, either on or off campus? Why that location? Where is the 'heart' of campus, the place to see and be seen? Would you change it? What are your thoughts about the Student Center? How do you like the Student Center? What campus place best represents Marshall University? Where is your favorite place on campus? What would you like to see on campus, what would it be? Where is your least favorite place on campus? What recreation activities or facilities do you use? What improvements or additions to recreational activities and facilities would you want to see on campus? Are athletics well-integrated into the campus? Where do you go to hang out with friends, either on or off campus? Why that location? Where is the 'heart' of campus, the place to see and be seen? Would you change it?

HAVE IDEAS FOR THE FUTURE OF MARSHALL? BE HEARD.



Master Plan Guiding Principles



Question 1

Which guiding principles resonate the most with you?

Guiding Principle 1 - Adapt fiscal practices to operate in a more resource constrained environment, while fulfilling the Institution's mission.

Guiding Principle 2 - Create campuses of distinction by investing in signature facilities and programs.

Guiding Principle 3 - Improve campus life experience.

Guiding Principle 4 - Embrace a growing diversity.

Guiding Principle 5 - Enhance campus identity.

Guiding Principle 6 - Enrich interactions between our campuses and communities.



Academics / Research

“Prepare students for global competitiveness” -Justin H

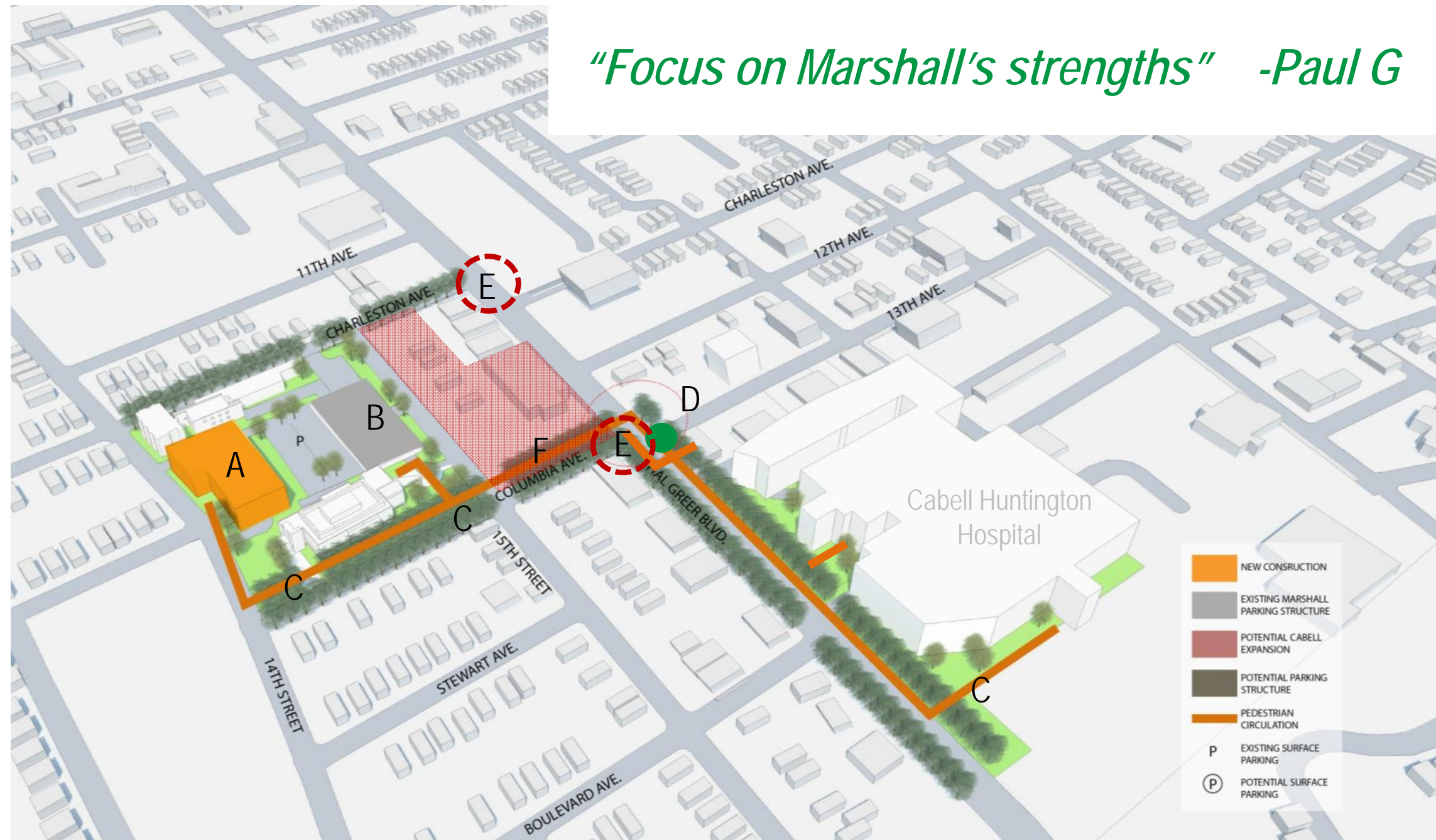
- (A) Jenkins Hall Renovation
- (B) Cam Henderson Center/
Gullickson Hall Renovations
- (C) Science Building Renovation
- (D) Prichard Hall Renovation
- (E) East Hall Expansion
- (F) High Tech Academic Classroom
Building to Complete Academic Core
- (G) Expanding Science/Tech Research Corridor



Medical / Forensics Campus

“Focus on Marshall’s strengths” -Paul G

- (A) Medical Education / Research Building
- (B) Expanded parking structure
- (C) Improved pedestrian connection and crosswalk to C-H Hospital
- (D) Work with City to install traffic signal at Columbia / 13th Ave for pedestrian crossing safety and vehicular sight distance.
- (E) Improved identity signage at Charleston + Columbia on Hal Greer
- (F) Possible Long term opportunity for joint planning and development with C-H Hospital to improve clinical, research and medical education district



Building Renovations

Question 1

Which of the proposed academic buildings, renovations and enhancements shown above will have the most positive effect on campus?

Classroom Technology Upgrades

Jenkins Hall Renovation

Cam Henderson/Gullickson Hall Renovation

Science Building Renovation

Prichard Hall Renovation

East Hall Expansion

New High Tech Academic Classroom Building

Science/Tech Research Corridor

Sports Medicine Translational Center

Medical Education/Research Building

Forensics Laboratory Expansion

South Charleston Expansion

"Give the CAM exterior some love" -Justin H

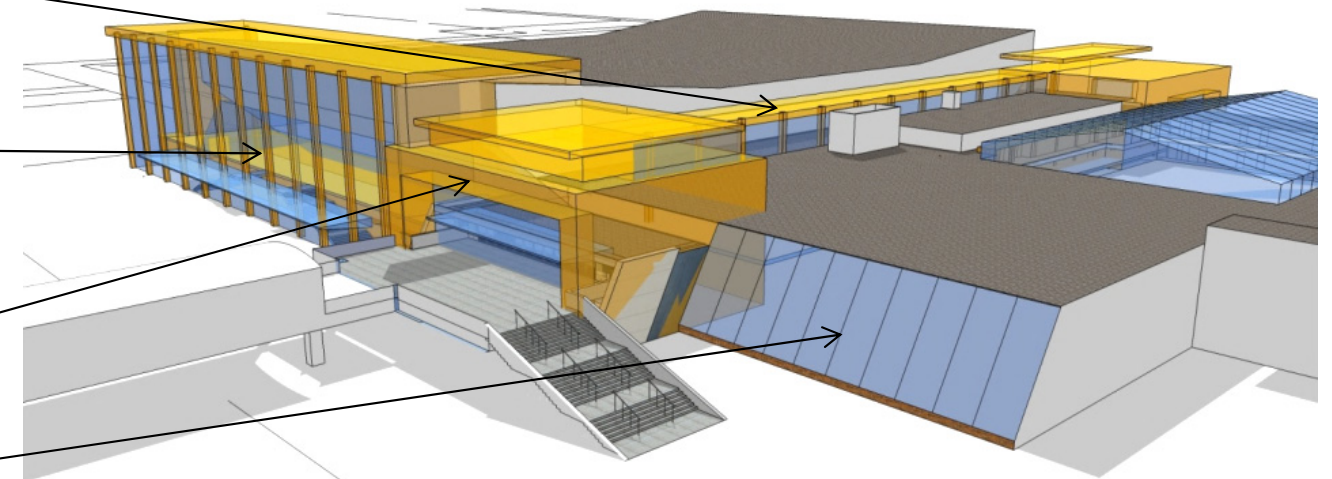
"Morrow Library...open 3rd Avenue entrance and Science too" -Jody P

enhanced
corridor

mezzanine level
expansion

new entry vestibule
ticketing and will call

new transparent
natorium glazing

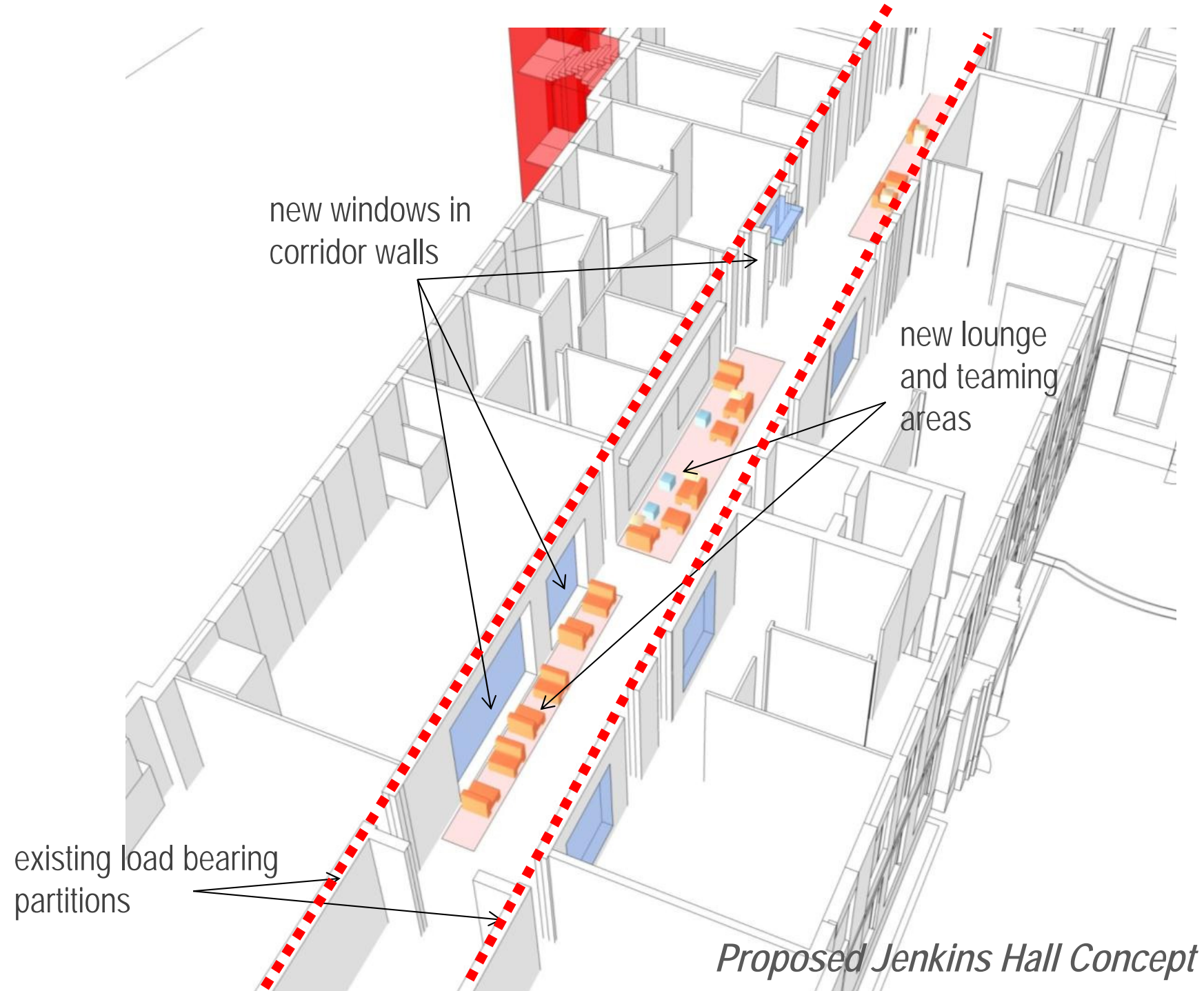


Proposed Cam Henderson Concept



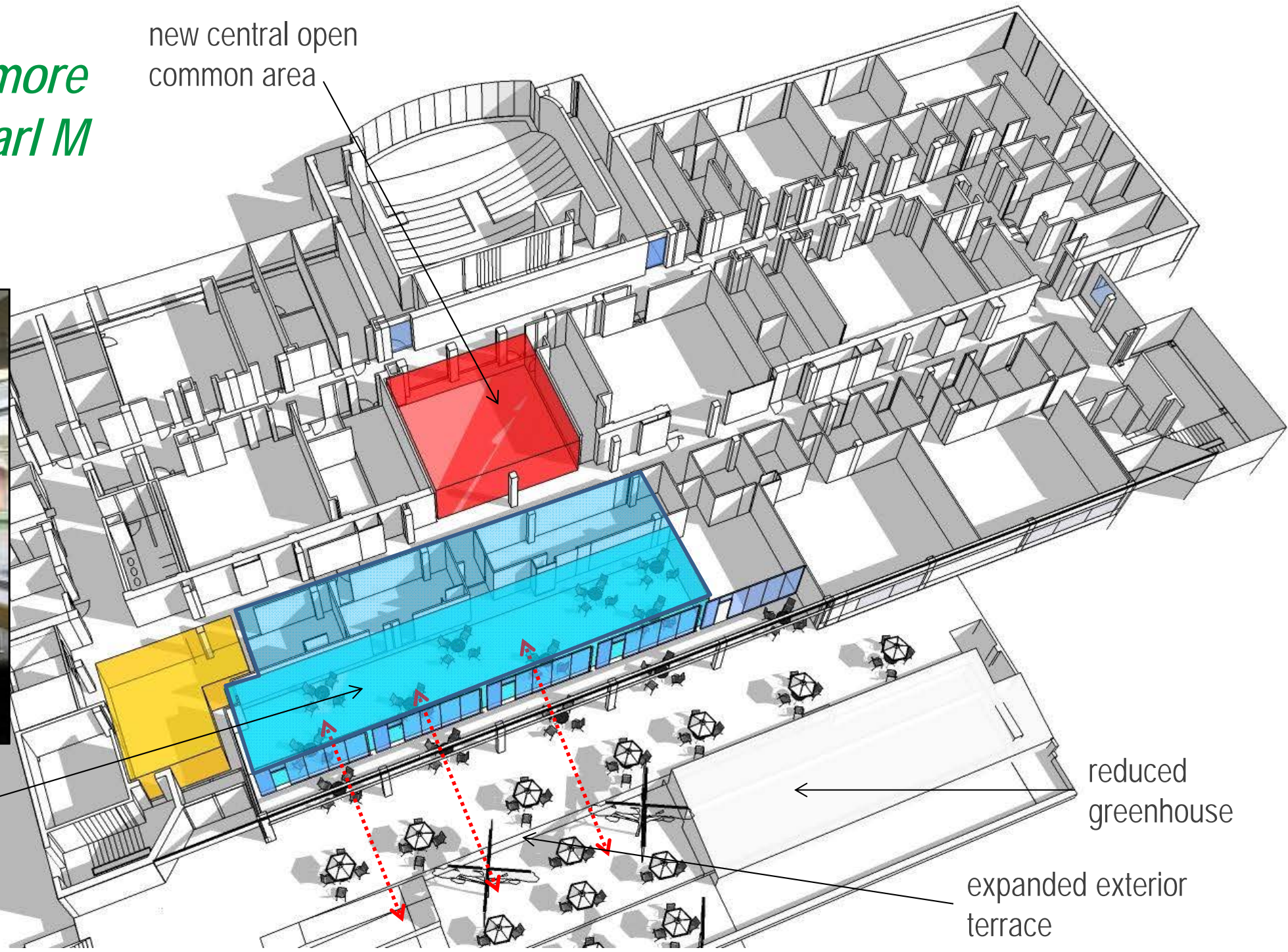
Building Renovations

“Make academic buildings useful with more gathering spaces outside of class” -Carl M



Building Renovations

“Make academic buildings useful with more gathering spaces outside of class” -Carl M



Proposed Science Building Concept



Classroom Upgrades

“We need to make several new technologies available” -Tayler T



Housing & Student Life

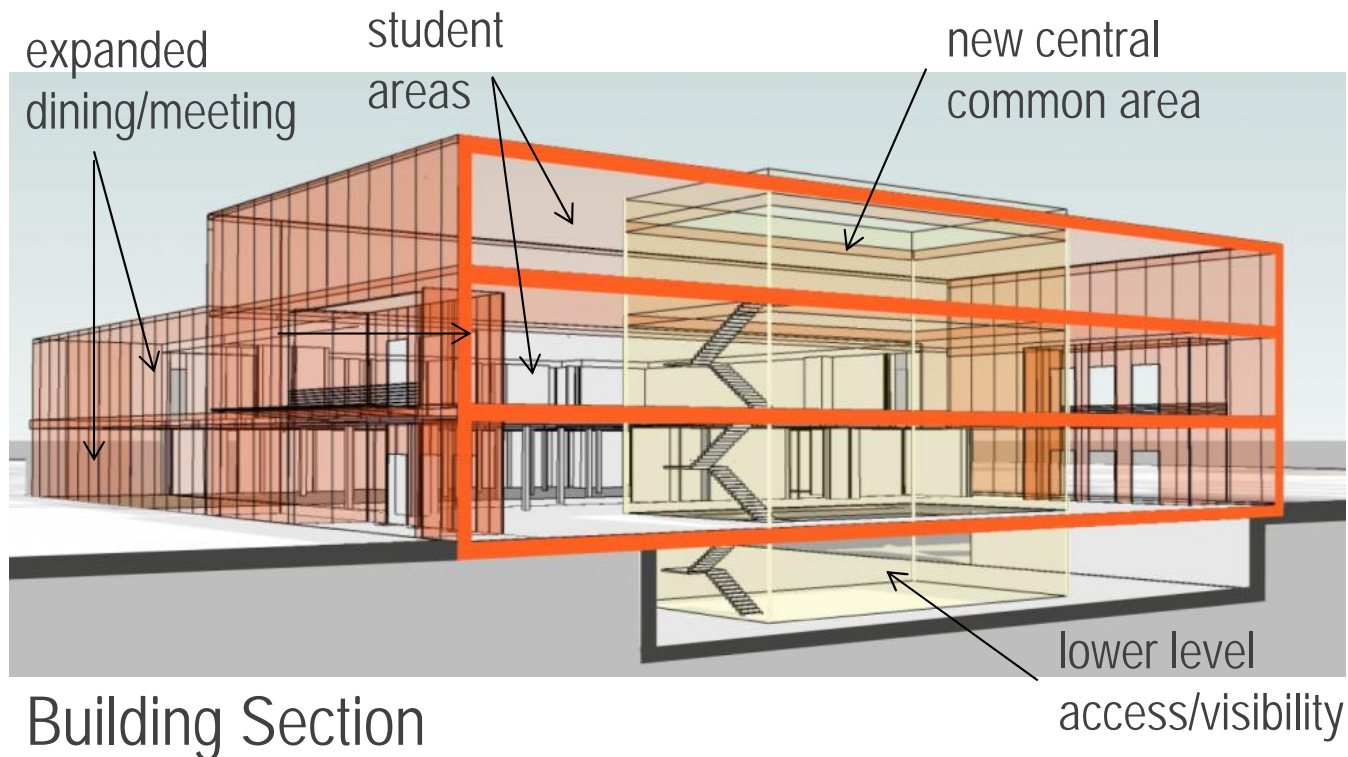
“Overhaul Twin Towers exterior” -Justin H

“Unite off-campus more effectively” -Bravin H

- (A) New Residence Hall
- (B) Residential Quad
- (C) Expanded Recreation
- (D) Twin Towers Renovation
- (E) Mixed Use Housing
- (F) MSC Renovation & Expansion
- (G) Holderby Demolition
(for future academic building)

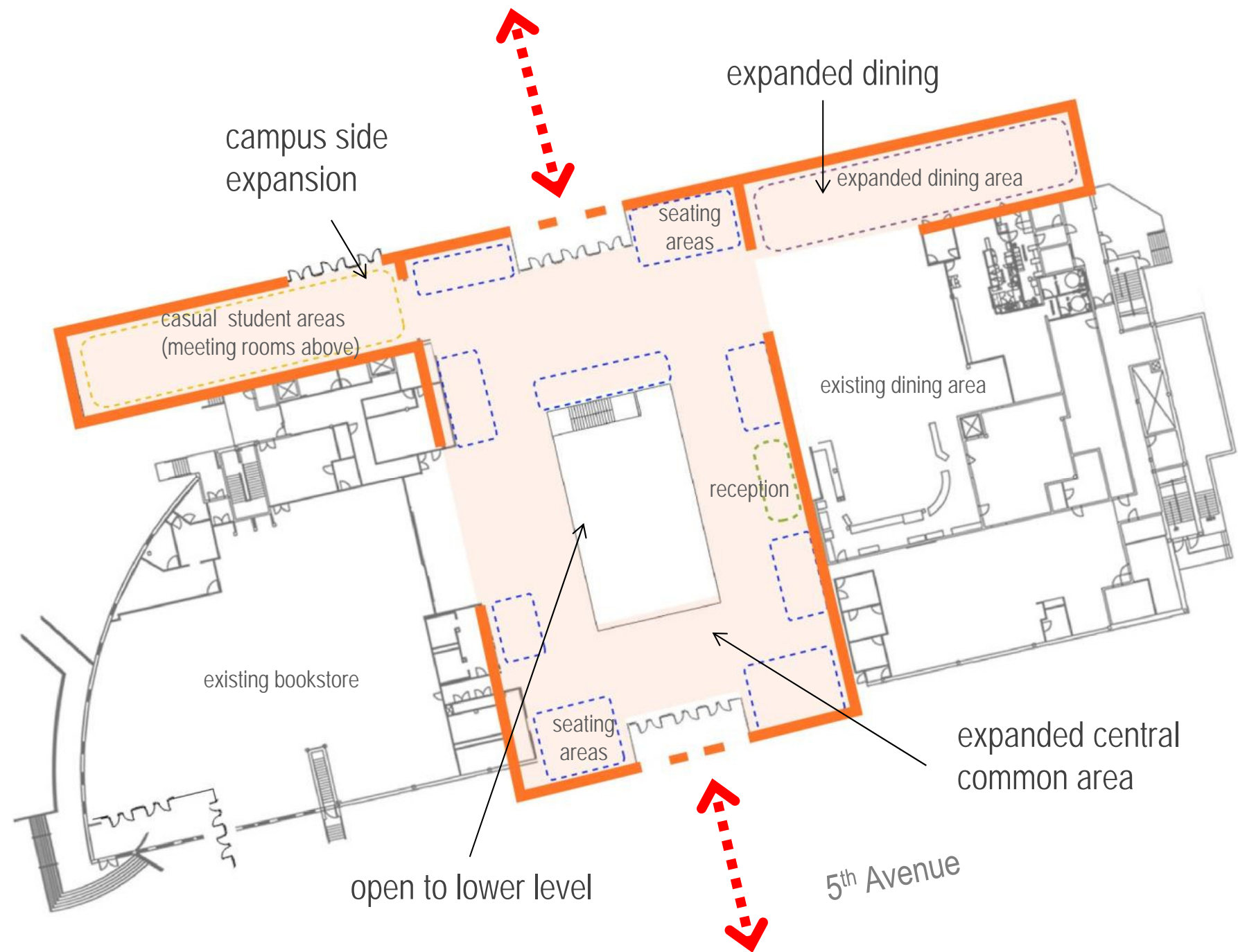


Memorial Student Center



"Create a student center for the future"
-Jonathan S

"Keep the central fireplace"
-Shahed E



Open Space Network



Memorial Walk



"Need more green space to enjoy being outside"
-Travis



Campus Gathering Spaces

“Host more live events...particularly at Buskirk Field” -Don B



Herd Way

Where do you think there is a need for more open space?

More Walkways and Seating Areas

Around the Residence Halls

More Recreation Fields

At Athletic Venues (for example: around the Football Stadium)



Campus Recreation



“Make campus more sustainable and eco-friendly...create community gardens...encourage walking and biking...use less energy...get solar panels and green roofs” -Daniel T



Green Roofs



Rain Gardens



Water Harvesting



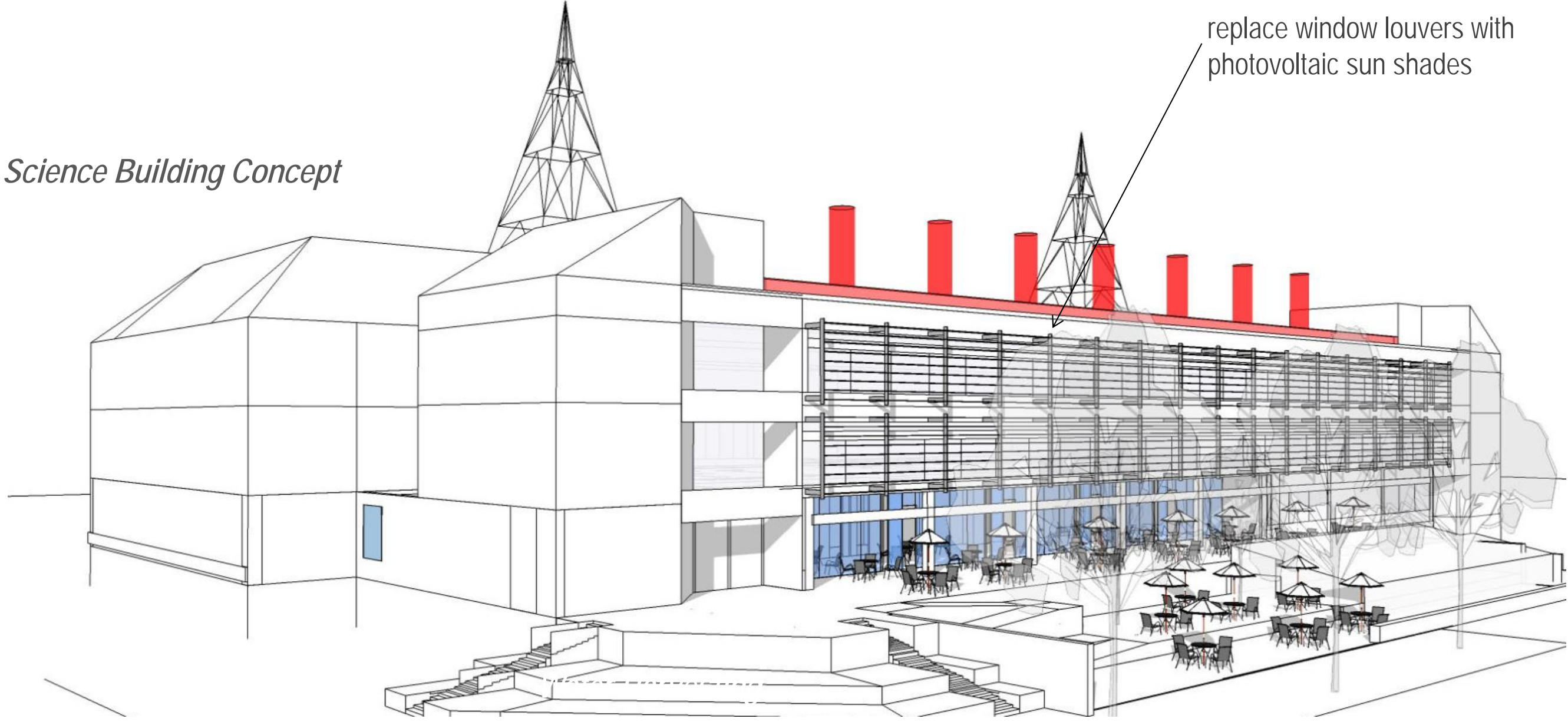
Detention Basins



Infiltration Areas

“Solar panels...are great ways to educate and expose students to current technologies” -Travis B

Proposed Science Building Concept



3rd & 5th Avenue Streetscapes

“While there are a few crosswalks on 3rd Avenue over to campus that are not at an intersection, the University is lacking any on 5th Avenue.”

-Jonathan S

Question 1

Which of the proposed streetscape improvements would enhance your campus experience?

Sidewalk enhancements

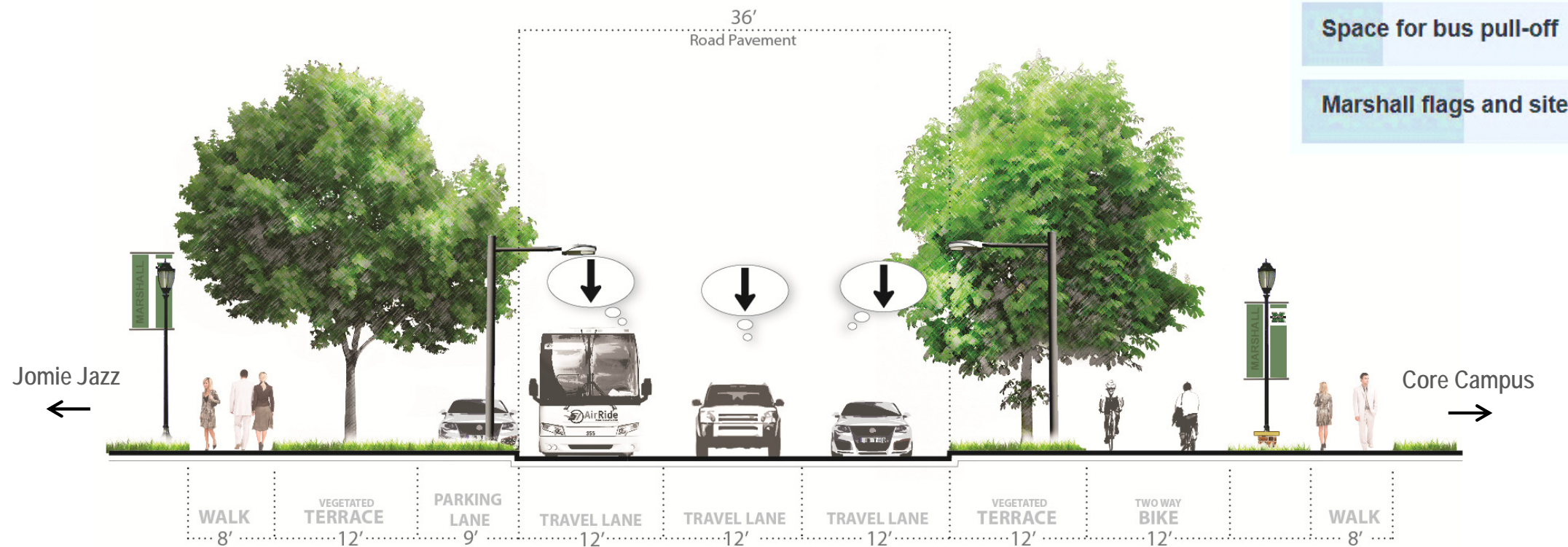
Designated bike lanes

Traffic calming

Landscape and street trees

Space for bus pull-off

Marshall flags and site walls



Proposed 5th Avenue Streetscape



Bicycle Circulation

*"...more covered bike racks would be a plus."
-Daniel H*



Covered Bike Parking



Dedicated Bike Paths



"Sidewalks on campus...are not wide enough to accommodate the pedestrian, bicycle and small utility vehicle traffic." -Eli M

Town-Gown Connections

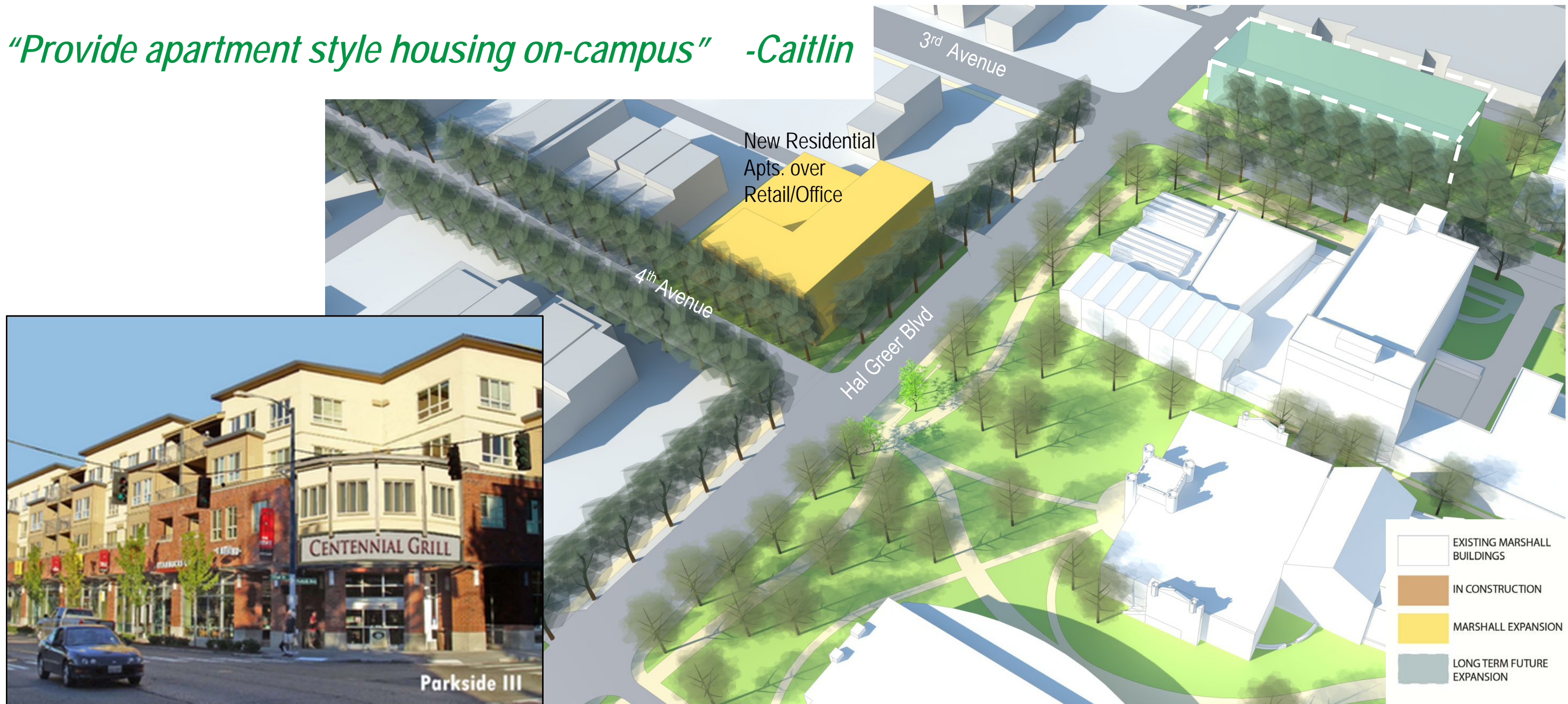


“Better connect Marshall and the Community” -Daniel T



Town-Gown Connections

"Provide apartment style housing on-campus" -Caitlin



Wayfinding

“Improve entrance to University...consider Marshall signage on the viaduct” -Eddie S



Expand Signage at Hal Greer and 5th Avenue



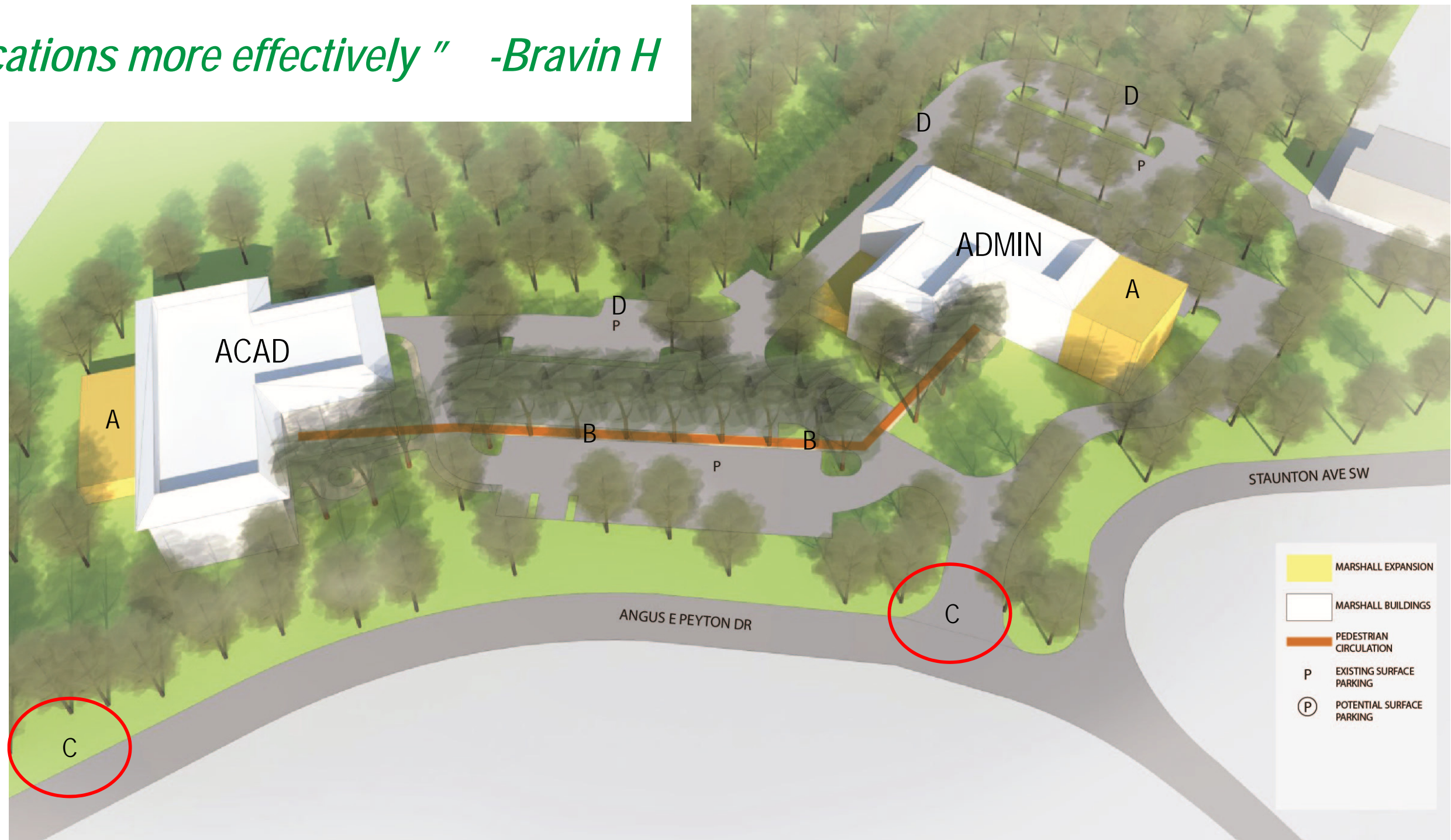
Gateways



South Charleston Graduate Campus

“Utilize off-campus locations more effectively” -Bravin H

- Ⓐ Potential for Expansion within Campus Footprint
- Ⓑ Creation of Walkway to Improve Pedestrian Circulation, Campus Identity and Storm water Management
- Ⓒ Enhanced Gateway/Wayfinding Opportunity
- Ⓓ Potential Parking Replacement for Spaces Lost for Walkway



Mid-Ohio Valley Center

“Utilize off-campus locations more effectively” -Bravin H

- (A) Mid-Ohio Valley Center
- (B) Sidewalk Enhancements
- (C) Improve Parking/ Storm water management opportunity
- (D) Enhanced Gateway Signage

