

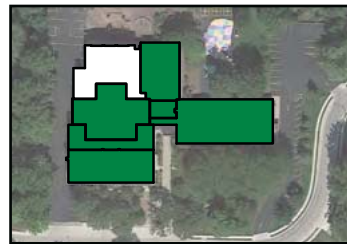
Scenario 3c



Elementary



Borlaug Elementary



Coralville Central Elem.



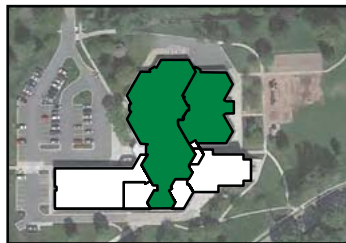
Garner Elementary



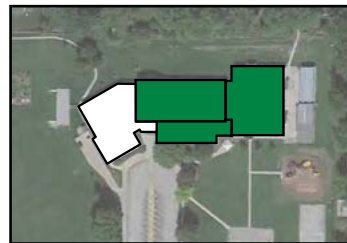
Hills Elementary



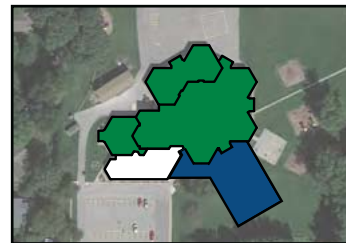
Hoover Elementary



Horn Elementary



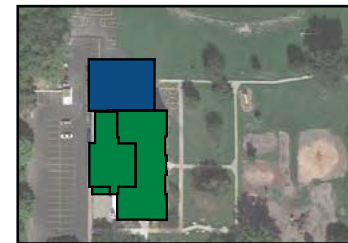
Kirkwood Elementary



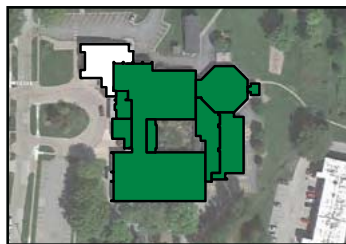
Lemme Elementary



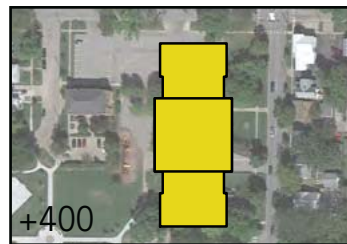
Lincoln Elementary



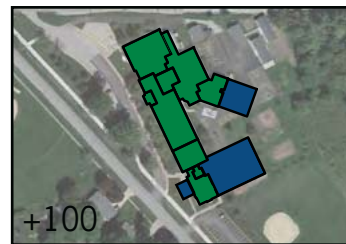
Longfellow Elementary



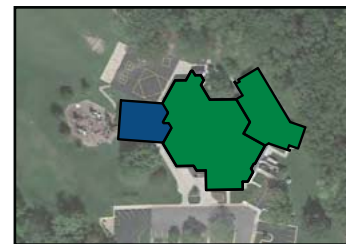
Lucas Elementary



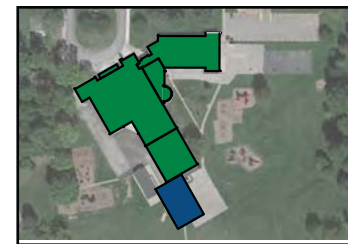
New/Ren. Mann Elem.



Penn Elementary



Shimek Elementary



Twain Elementary



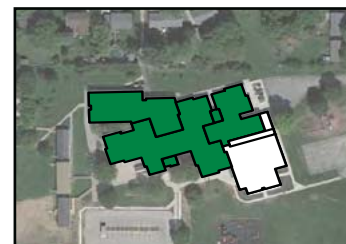
Van Allen Elementary



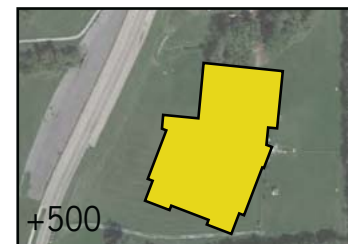
Weber Elementary



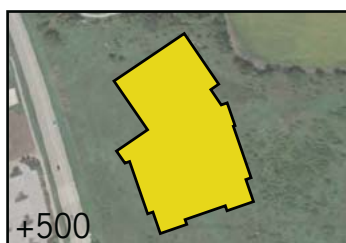
Wickham Elementary



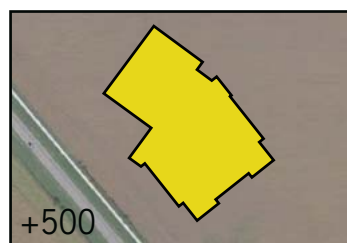
Wood Elementary



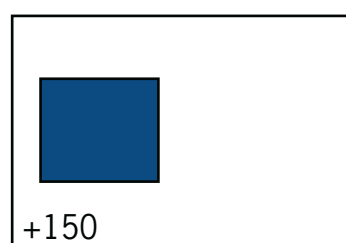
New East Iowa City Elementary



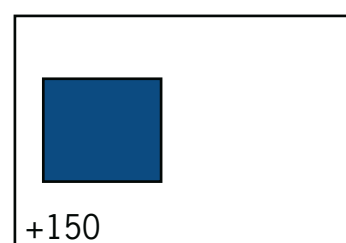
New South Iowa City Elementary



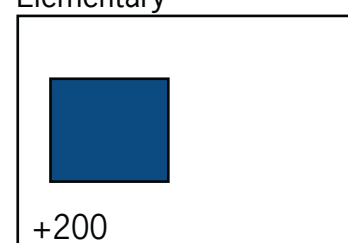
New North Johnson County Elementary



Addition to Existing Elem.

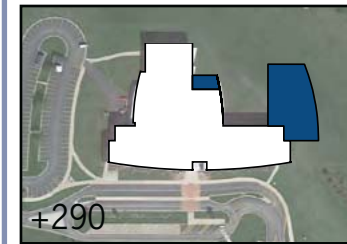


Addition to Existing Elem.

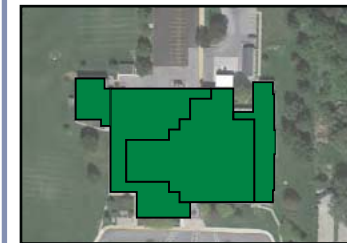


Addition to Existing Elem.

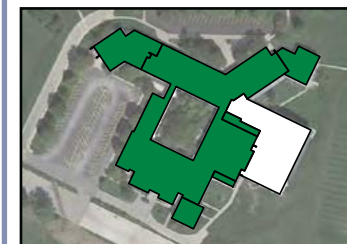
Junior High



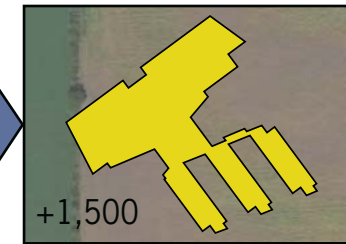
North Central Junior High



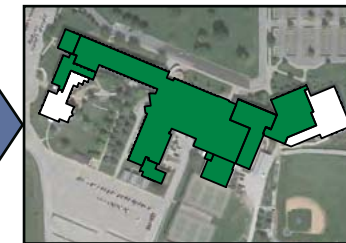
Northwest Junior High



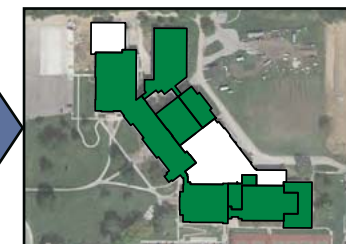
South East Junior High



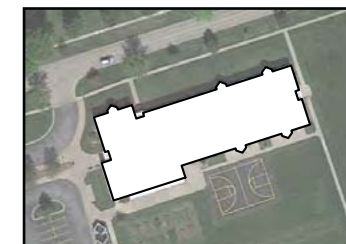
New High School



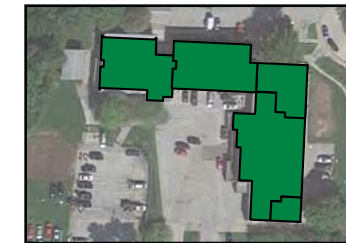
West High School



City High School



Tate High School



TREC

- Renovate
- Addition
- New Construction
- Retire

High School

ELEMENTARY SCHOOLS (K-6)

Four new elementary schools, one on the existing site of Mann Elementary School are proposed in this scenario. Hills and Lincoln Elementary Schools are retired. Three additions, one of 150 and two of 200-student capacity are proposed at two existing elementary schools, while Penn Elementary receives an addition to seat an additional 100 students. Those elementary schools without a second assembly space receive a multipurpose room addition.

JUNIOR HIGH SCHOOLS (7-8)

A large classroom addition is proposed at North Central Junior High School. Northwest and South East Junior High Schools receive renovations.

HIGH SCHOOLS (9-12)

A new third comprehensive high school with a capacity of 1500 students is proposed. City and West High Schools receive renovations.

Projected Enrollment	15,372
Capacity	15,560
First Costs	\$247.8 M
Lifecycle Costs	\$3,130 M
Average Annual Operating & Staff Costs	\$96.1 M
Total Square Footage	2,455,002
Educational Adequacy Score	85.7
Cost Benefit Ratio	201.7

PROS

- Rebuilds or renovates Mann Elementary on current site
- Works towards making all elementary schools similar in size
- Lower annual Operating/Staff Cost
- Clear feeder system

CONS

- Retires Hills and Lincoln Elementary Schools
- City High School cannot accommodate growth

Scenario 3c

	DESCRIPTION OF WORK (See Physical Needs Assessment Report for complete description of renovations)	Renovate	Addition	New Const.	Retire	GRADE ALIGNMENT	CAPACITY	TOTAL COST
								(in millions of dollars)
ELEMENTARY SCHOOL								
BORLAUG ELEM.	Minor repairs.					K-6	451	\$0.008
CORALVILLE CENTRAL ELEM.	Accessibility renovations, masonry tuckpointing, rooftop HVAC replacement.	█				K-6	362	\$4.8
GARNER ELEM.	Playground sod replacement, minor repairs.					K-6	445	\$0.1
HILLS ELEM.	Discontinued use as a school.				█			
HOOVER ELEM.	Multipurpose room addition. Accessibility renovations, water source heat pump HVAC system, window replacement.	█	█			K-6	304	\$5.1
HORN ELEM.	Accessibility renovations, interior lighting upgrade, classroom door replacement.	█				K-6	410	\$1.0
KIRKWOOD ELEM.	Rooftop AHU VAV System and roofing replacement.	█	█			K-6	306	\$3.9
LEMME ELEM.	Multipurpose room addition. Window replacement, IT upgrades.	█	█			K-6	351	\$1.9
LINCOLN ELEM.	Discontinued use as a school.				█			
LONGFELLOW ELEM.	Multipurpose room addition. Accessibility renovations, basement waterproofing, fan coil unit HVAC system with ventilation AHU, ceiling replacement, plaster repair.	█	█			K-6	258	\$5.0
LUCAS ELEM.	Interior lighting upgrades, water source heat pump HVAC system, ceiling replacement, window wall replacement.	█				K-6	381	\$4.1
MANN ELEM.	New 394 student elementary built on site or renovated building with addition.			█		K-6	400	\$12.9
PENN ELEM.	Addition includes 4 classrooms and multipurpose room. Renovations include HVAC system upgrade, carpet replacement, and IT upgrades.	█	█			K-6	487	\$8.1
SHIMEK ELEM.	Multipurpose room addition. Renovations include roof replacement, water source heat pump HVAC system.	█	█			K-6	239	\$3.6
TWAIN ELEM.	Multipurpose room addition. Renovations include accessibility renovations, IT upgrades, and water source heat pump HVAC system.	█	█			K-6	252	\$5.3
VAN ALLEN ELEM.	Clerestory window water infiltration repairs, minor repairs.					K-6	464	\$0.4
WEBER ELEM.	IT upgrades, interior lighting upgrades.					K-6	396	\$0.8
WICKHAM ELEM.	IT upgrades, gym floor repairs.					K-6	428	\$1.2
WOOD ELEM.	Fan coil unit HVAC system, roof replacement.	█				K-6	408	\$3.4
NEW ELEM.	New 500 student elementary.			█		K-6	500	\$14.5
NEW ELEM.	New 500 student elementary.			█		K-6	500	\$14.5
NEW ELEM.	New 500 student elementary.			█		K-6	500	\$14.5
ADDITION TO EXIST. ELEM.	Addition to an existing elementary school providing capacity for an additional 150 students.		█			K-6	150	\$4.7
ADDITION TO EXIST. ELEM.	Addition to an existing elementary school providing capacity for an additional 150 students.		█			K-6	150	\$4.7
ADDITION TO EXIST. ELEM.	Addition to an existing elementary school providing capacity for an additional 200 students.		█			K-6	200	\$6.4
JUNIOR HIGH SCHOOLS								
NORTH CENTRAL JH	Addition includes 12 classrooms and multipurpose room expansion.		█			7-8	926	\$10.6
NORTHWEST JH	Roof replacement, IT upgrades, interior lighting upgrades, VAV air handling unit HVAC system.	█				7-8	806	\$10.2
SOUTH EAST JH	Accessibility renovations, HVAC system renovations, interior lighting upgrades, locker replacement, roof replacement.	█				7-8	764	\$10.1
HIGH SCHOOLS								
CITY HS	Accessibility renovations, IT upgrades, geothermal heat pump system, roof replacement.	█				9-12	1,293	\$11.0
TATE HS	Minor repairs.					9-12	119	\$0.08
TREC	Masonry repair, VAV rooftop HVAC system and water source heat pump, plaster repair.	█				9-12	126	\$3.2
WEST HS	Accessibility renovations, roof replacement, IT upgrades, HVAC system revisions & upgrades, electrical upgrades, window wall system replacement.	█				9-12	1,684	\$16.5
NEW HS	New 1,500 student high school.			█		9-12	1,500	\$65.3
2022-23 Projected K-12 Enrollment = 15372						Total	15,560	\$247.8