

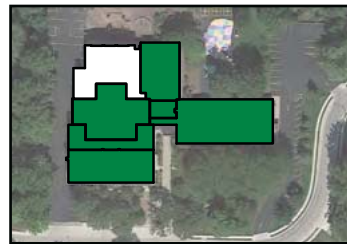
Scenario 2c



Elementary



Borlaug Elementary



Coralville Central Elem.



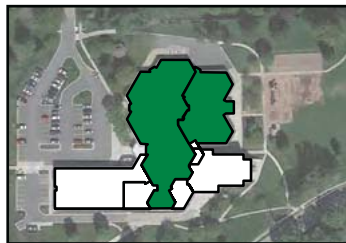
Garner Elementary



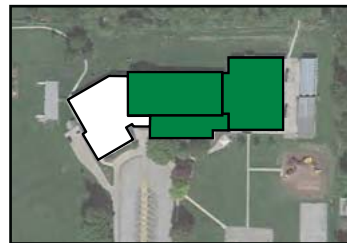
Hills Elementary



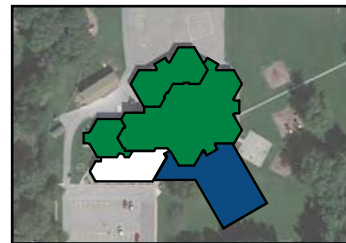
Hoover Elementary



Horn Elementary



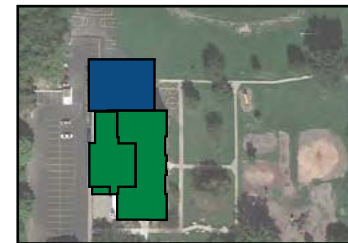
Kirkwood Elementary



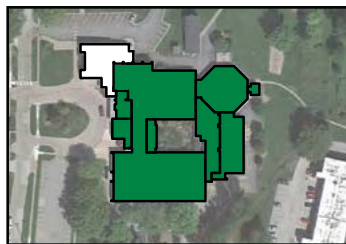
Lemme Elementary



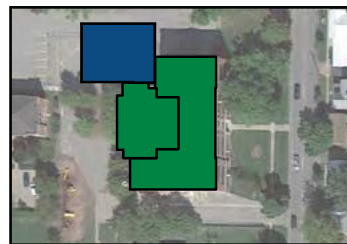
Lincoln Elementary



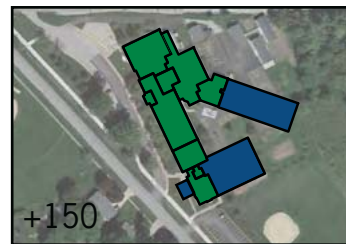
Longfellow Elementary



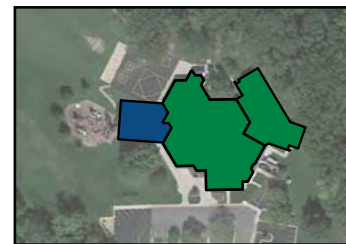
Lucas Elementary



Mann Elementary



Penn Elementary



Shimek Elementary



Twain Elementary



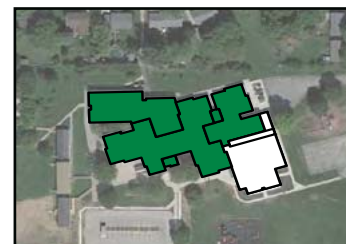
Van Allen Elementary



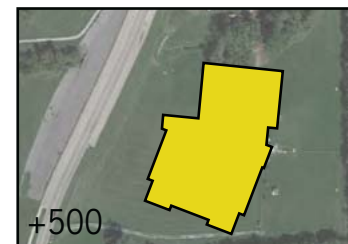
Weber Elementary



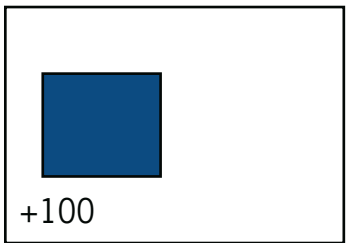
Wickham Elementary



Wood Elementary

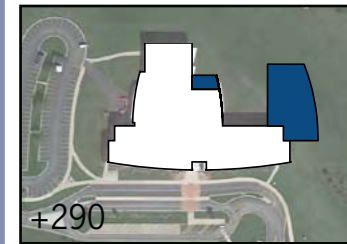


New Elementary (Site Undetermined)

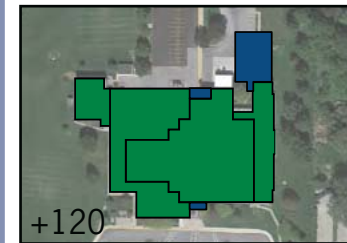


+100
Addition to Existing Elem.

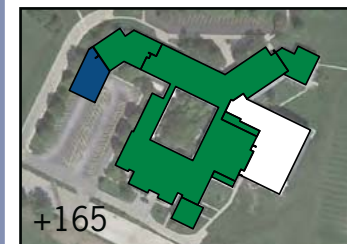
Junior High



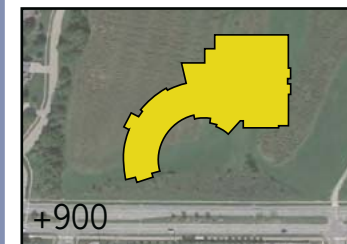
+290
North Central Junior High



+120
Northwest Junior High



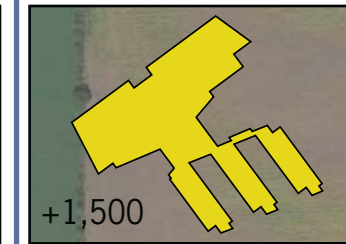
+165
South East Junior High



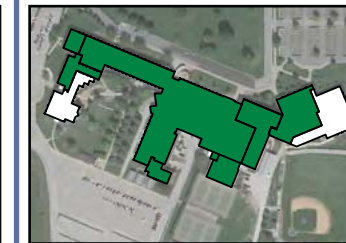
+900
New Junior High

- Renovate
- Addition
- New Construction
- Retire

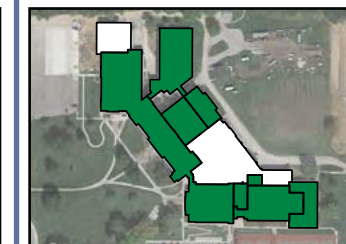
High School



+1,500
New High School



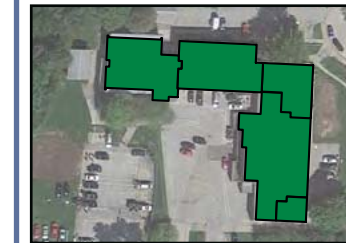
West High School



City High School



Tate High School



TREC

ELEMENTARY SCHOOLS (K-5)

This plan features one new 500-student elementary school, a classroom addition to Penn Elementary School, and a 100-student capacity addition to another existing elementary school. Hills Elementary School is retired. The remaining elementary schools are renovated and multipurpose rooms are built at buildings that lack a second assembly space.

JUNIOR HIGH SCHOOLS (6-8)

A classroom addition is proposed at all three existing junior high schools, as well as a new 900-student junior high school.

HIGH SCHOOLS (9-12)

A new third comprehensive high school with a capacity of 1,500 students is proposed. City and West High Schools receive renovations.

Projected Enrollment	15,372
Capacity	15,419
First Costs	\$238.9 M
Lifecycle Costs	\$3,197 M
Average Annual Operating & Staff Costs	\$98.6 M
Total Square Footage	2,447,892
Educational Adequacy Score	82.9
Cost Benefit Ratio	190.5

PROS

- Reduces construction need at elementary level by going to K-5
- Lowest initial construction cost
- Least amount of new construction
- Can be either Junior High or Middle School

CONS

- Does not give capacity at areas of growth/need - no clear feeder.
- City High School cannot accommodate growth
- Retires Hills Elementary School
- Highest annual operating/staff costs
- Lowest Cost Benefit Ratio

Scenario 2c

	DESCRIPTION OF WORK (See Physical Needs Assessment Report for complete description of renovations)	Renovate	Addition	New Const.	Retire	GRADE ALIGNMENT	CAPACITY	TOTAL COST
								(in millions of dollars)
ELEMENTARY SCHOOLS								
BORLAUG ELEM.	Minor repairs.					K-5	451	\$0.008
CORALVILLE CENTRAL ELEM.	Accessibility renovations, masonry tuckpointing, rooftop HVAC replacement.	█				K-5	362	\$4.8
GARNER ELEM.	Playground sod replacement, minor repairs.					K-5	445	\$0.1
HILLS ELEM.	Discontinued use as a school.				█			
HOOVER ELEM.	Multipurpose room addition. Accessibility renovations, water source heat pump HVAC system, window replacement.	█	█			K-5	304	\$5.1
HORN ELEM.	Accessibility renovations, water source heat pump HVAC system, window replacement.	█				K-5	410	\$1.0
KIRKWOOD ELEM.	Rooftop AHU VAV system, roofing replacement.	█				K-5	306	\$3.9
LEMME ELEM.	Multipurpose room addition. Window replacement, IT upgrades.	█	█			K-5	351	\$1.9
LINCOLN ELEM.	Multipurpose room addition. Accessibility renovations, roof replacement, fan coil unit HVAC system, window replacement.	█	█			K-5	187	\$3.5
LONGFELLOW ELEM.	Multipurpose room addition. Accessibility renovations, basement waterproofing, fan coil unit HVAC system with ventilation AHU, ceiling replacement, plaster repair.	█	█			K-5	258	\$5.0
LUCAS ELEM.	Interior lighting upgrades, water source heat pump HVAC system, ceiling replacement, window wall replacement.	█				K-5	381	\$4.1
MANN ELEM.	Multipurpose room addition. Accessibility renovations, basement waterproofing, fan coil unit HVAC system, plaster repair.	█	█			K-5	237	\$4.8
PENN ELEM.	Addition includes 6 classrooms and multipurpose room. Renovations include HVAC system upgrade, carpet replacement, IT upgrades.	█	█			K-5	537	\$9.6
SHIMEK ELEM.	Multipurpose room addition. Roof replacement, water source heat pump HVAC system, ceiling replacement, interior lighting upgrades.	█	█			K-5	239	\$3.6
TWAIN ELEM.	Multipurpose room addition. Accessibility renovations, IT upgrades, water source heat pump HVAC system, window wall system replacement.	█				K-5	252	\$5.3
VAN ALLEN ELEM.	Clerestory window water infiltration repairs, minor repairs.					K-5	464	\$0.4
WEBER ELEM.	IT upgrades, interior lighting upgrades.					K-5	396	\$0.8
WICKHAM ELEM.	IT upgrades, gym floor repairs.					K-5	428	\$1.2
WOOD ELEM.	Fan coil unit HVAC system, roof replacement.	█				K-5	408	\$3.4
NEW ELEM.	New 500 student elementary.			█		K-5	500	\$14.5
ADDITION TO EXIST. ELEM.	Addition to an existing elementary school providing capacity for an additional 100 students.		█			K-5	100	\$3.4
JUNIOR HIGH SCHOOLS								
NORTH CENTRAL JH	Addition includes 12 classrooms and multipurpose room, library and cafeteria expansions.		█			6-8	926	\$10.6
NORTHWEST JH	Addition includes 5 classrooms and cafeteria expansion. Renovations include roof replacement, IT upgrades, interior lighting upgrades and VAV air handling unit HVAC system.	█	█			6-8	926	\$12.4
SOUTH EAST JH	Addition includes 7 classrooms. Renovations include accessibility renovations, HVAC system renovations, interior lighting upgrades, locker replacement and roof replacement.	█	█			6-8	929	\$13.1
NEW JH	New 900 student junior high.			█		6-8	900	\$30.3
HIGH SCHOOLS								
CITY HS	Accessibility renovations, IT upgrades, geothermal heat pump system, roof replacement.	█				9-12	1,293	\$11.0
TATE HS	Minor repairs.					9-12	119	\$0.08
TREC	Masonry repair, VAV rooftop HVAC system and water source heat pump, plaster repair.	█				9-12	126	\$3.2
WEST HS	Accessibility renovations, roof replacement, IT upgrades, HVAC system revisions & upgrades, electrical upgrades, window wall system replacement.	█				9-12	1,684	\$16.5
NEW HS	New 1,500 student high school.			█		9-12	1,500	\$65.3
	2022-23 Projected K-12 Enrollment = 15372					Total	15,419	\$238.9