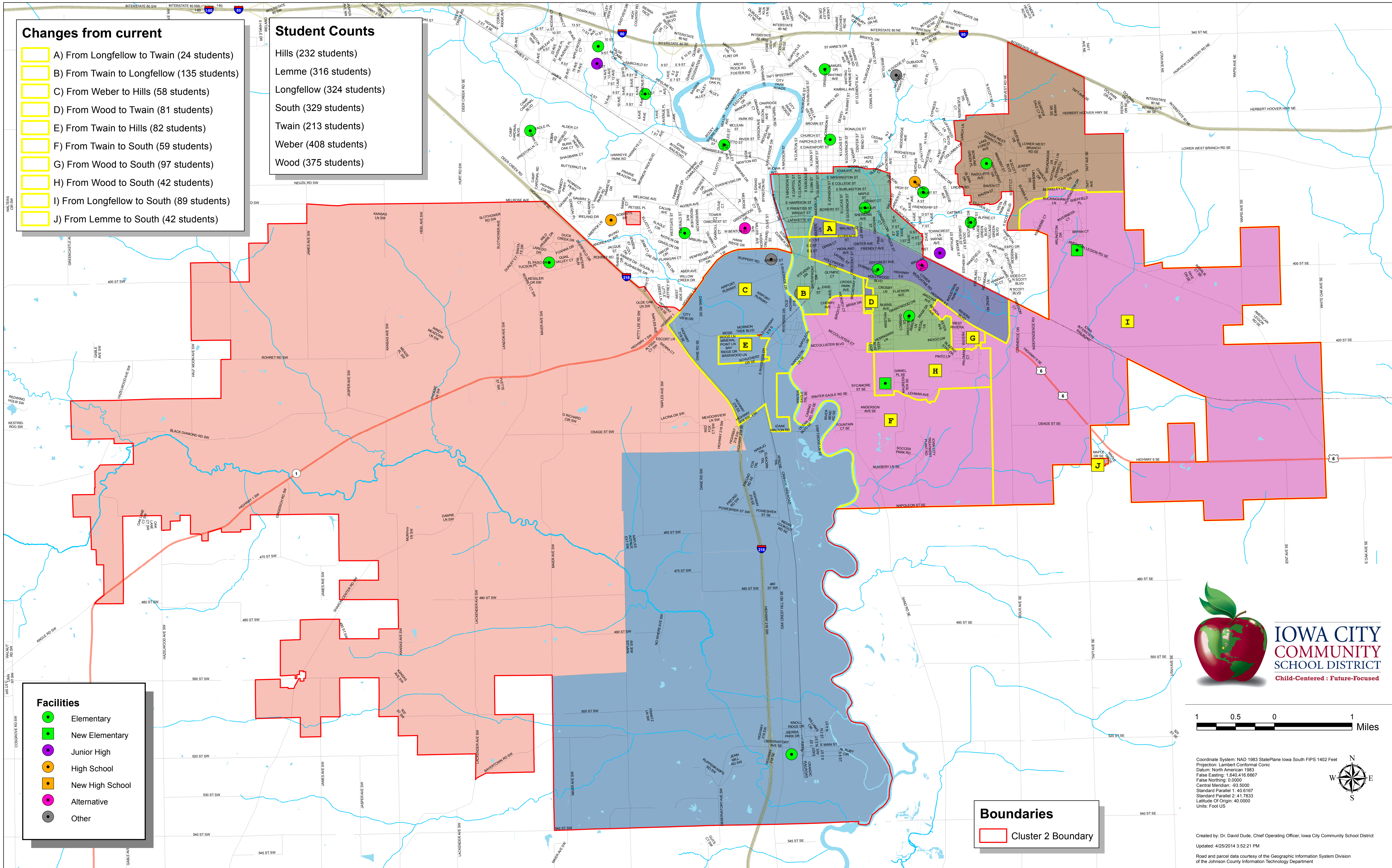


Cluster 2 Boundaries: Round 3

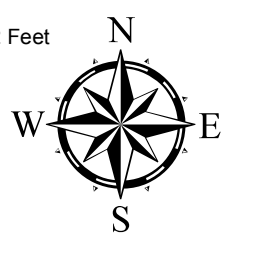
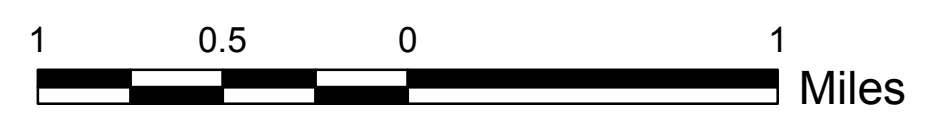


- Changes from current**
- A) From Longfellow to Twain (24 students)
 - B) From Twain to Longfellow (135 students)
 - C) From Weber to Hills (58 students)
 - D) From Wood to Twain (81 students)
 - E) From Twain to Hills (82 students)
 - F) From Twain to South (59 students)
 - G) From Wood to South (97 students)
 - H) From Wood to South (42 students)
 - I) From Longfellow to South (89 students)
 - J) From Lemme to South (42 students)

- Student Counts**
- Hills (232 students)
 - Lemme (316 students)
 - Longfellow (324 students)
 - South (329 students)
 - Twain (213 students)
 - Weber (408 students)
 - Wood (375 students)

- Facilities**
- Elementary
 - New Elementary
 - Junior High
 - High School
 - New High School
 - Alternative
 - Other

Boundaries
 Cluster 2 Boundary



Coordinate System: NAD 1983 StatePlane Iowa South FIPS 1402 Feet
 Projection: Lambert Conformal Conic
 Datum: North American 1983
 False Easting: 1,640,416.6667
 False Northing: 0.0000
 Central Meridian: -93.5000
 Standard Parallel 1: 40.6187
 Standard Parallel 2: 41.7833
 Latitude Of Origin: 40.0000
 Units: Foot US

Created by: Dr. David Dude, Chief Operating Officer, Iowa City Community School District
 Updated: 4/25/2014 3:52:21 PM
 Road and parcel data courtesy of the Geographic Information System Division of the Johnson County Information Technology Department