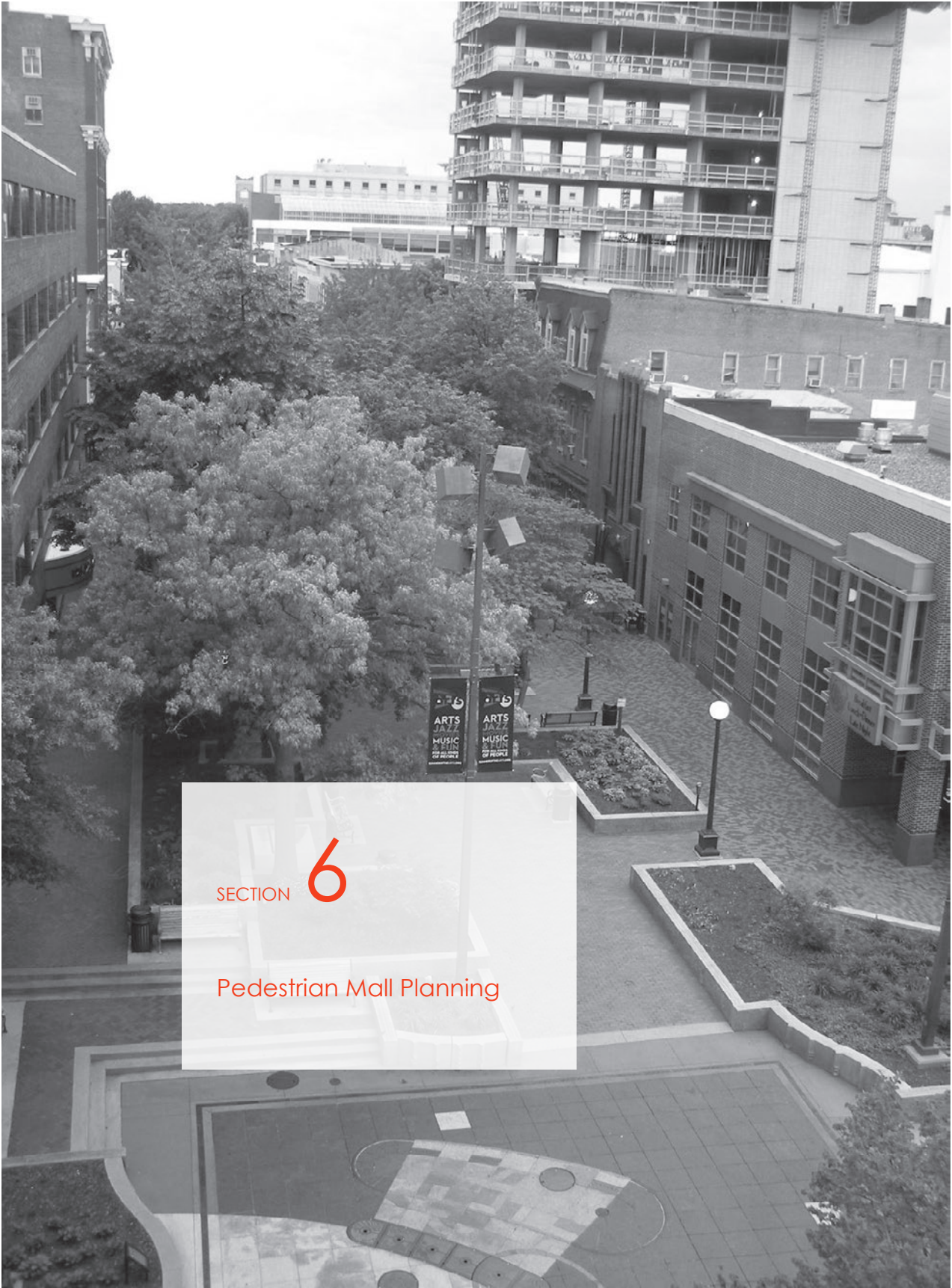




The measure of any great civilization is in its cities, and the measure of a city's greatness is to be found in the quality of its public spaces, its parks and squares.

– John Ruskin



SECTION 6

Pedestrian Mall Planning



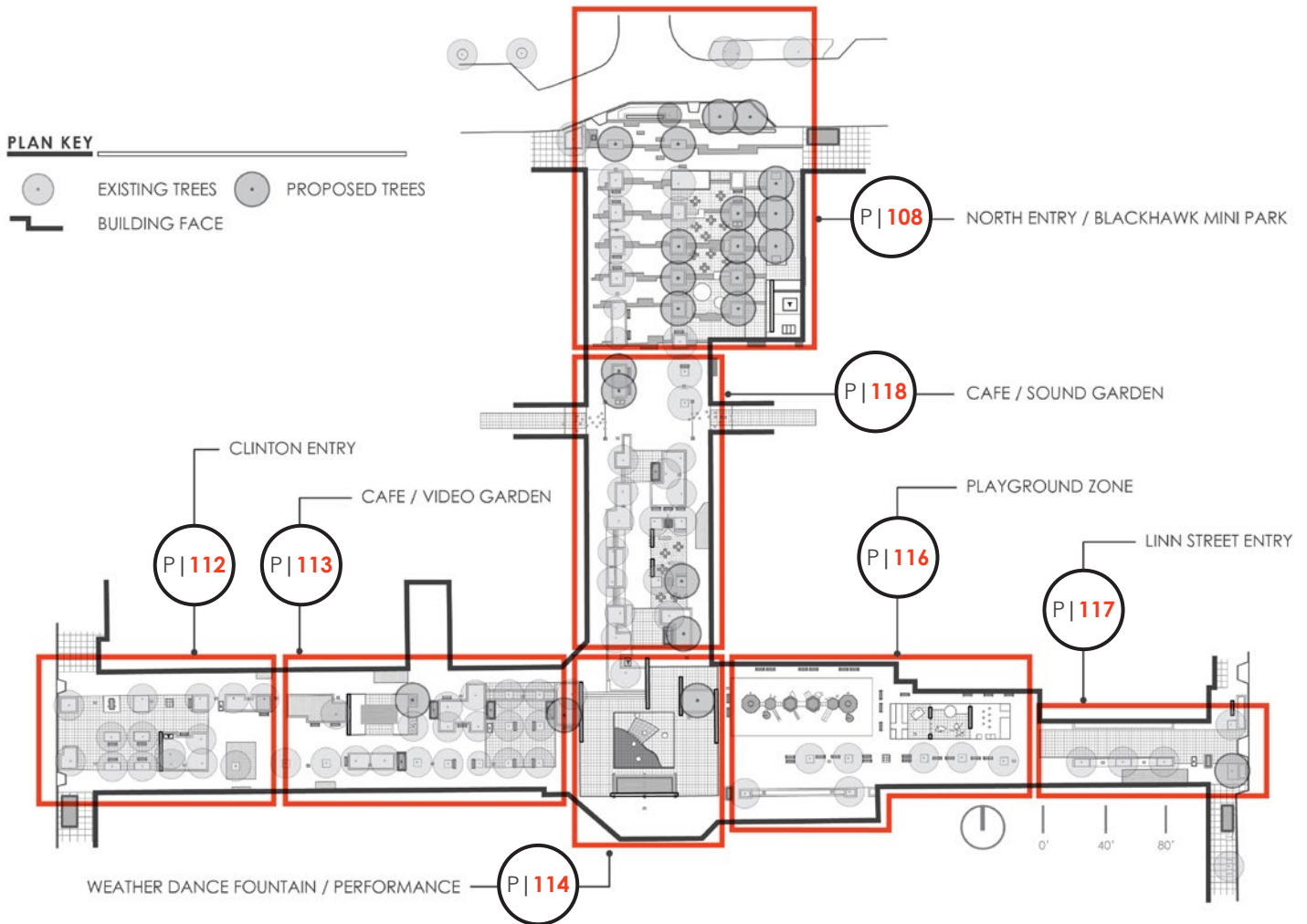
PEDESTRIAN MALL PLANNING INTRODUCTION

The nationally renowned Ped Mall is widely recognized as an iconic destination with a high level of resident, student, and alumni attachment. It has 'good bones' and a solid foundation is already in place. Therefore, the intent of the current planning concept is to 'freshen up' and reinvigorate the Ped Mall while maintaining the original intent of creating a public gathering place for all ages from all walks of life.

To enrich the experience of the Ped Mall, a series of secondary destinations are proposed and include Black Hawk Mini Park, a Sound Garden, and a Video Garden. The children's play zone is expanded with an interactive and educational EcoLAB. The entries become more welcoming and are reimagined with new wayfinding kiosks, lighting, and the introduction of additional sunlight and views through selective tree pruning. The Weather Dance Fountain and performance space is strengthened with a permanent stage canopy and improved seating opportunities. The secondary destinations are meant to be uniquely different from each other and envisioned to engage multiple user groups. Secondary destinations are described in the following sections.

Throughout the master plan process, stakeholder and public feedback consistently indicated a strong interest in improved Ped Mall lighting. Additionally, many of the existing globe lights are reaching the end of their life cycle. For the functional lighting of the Ped Mall, a conversion of the existing system to LED is recommended. A multi-layered lighting framework is also proposed and includes up lighting of trees, architectural lighting of proposed shade canopies, and accent lighting of public artwork. The lighting framework and other component-related recommendations are addressed within the Ped Mall framework section.

Black Hawk Mini Park is currently a construction staging area for Park@201 and once construction is complete, the park can once again become a 'park for all people'. The planning concept calls for a feature public art piece to anchor the park and to create a focal point to the north entry of the Ped Mall. A series of diverse spaces are created within the park to enhance the public realm and to appeal to a wide range of users. More detailed narrative, conceptual plans, and renderings for Black Mini Park follow the Pedestrian Mall Goals + Objectives.



PEDESTRIAN MALL GOALS + OBJECTIVES

Enhance the Public Realm.

- Celebrate the history and culture of Iowa City.
- Create a memorable public space at Black Hawk Mini Park.
- Improve the children’s play area and the ‘Weather Dance’ fountain stage space.
- Create a focal point and Ped Mall gateway at Dubuque and Washington.

Build on Existing Strengths.

- Reinforce the public artwork program.
- Enhance the tree planting program.
- Enhance the opportunities for families including the play area at the Library.

Address the Aging Infrastructure.

- Evaluate the adequacy and condition of existing utilities.
- Make recommendations on utility improvements.
- Improve the special event infrastructure.

Enhance Our Environmental Stewardship and Become a ‘Green’ Downtown.

- Explore and incorporate green infrastructure strategies.
- Promote the use of sustainable and low maintenance materials.
- Improve recycling opportunities.

Develop a Multi-Layered, Flexible Lighting Framework.

- Create a lighting framework that informs use and enhances wayfinding.
- Create opportunities for year-round and seasonal lighting.

Enhance the Wayfinding Network.

- Create a gateway into the Ped Mall at Washington and Dubuque.



PLAN KEY

- | | |
|--|--|
| A THRESHOLD | K SEAT WALL |
| B WAYFINDING KIOSK | L SHELTERED BIKE PARKING |
| C PROPOSED TREE | M EXISTING WALKWAY |
| D EXISTING TREE | N PROPOSED RE-LOCATION SOLAR BALANCE |
| E PROPOSED PAVING BAND | O PROPOSED PUBLIC ART |
| F PROPOSED BENCH (TYPICAL.) | P RECYCLING STATION |
| G PEDESTRIAN SCALE LIGHT (TYPICAL.) | Q MOVEABLE TABLES AND CHAIRS |
| H EXISTING PAVING | R PROPOSED RE-LOCATION BALANCE IN PLACE |
| I RECYCLING STATION | S PLANTING AREA |
| J GRAPEVINE LIGHTING + PERMEABLE PAVING | T PLAY AREA |
| | U STORYWALL WITH UPLIGHTING |
| | V NEW UNIT PAVERS (TYPICAL.) |

NORTH ENTRY AND BLACK HAWK MINI PARK

The planning concept for Black Hawk Mini Park creates a series of diverse experiences that will appeal to multiple user groups. To mark the point of arrival and the transition from streetscape to Ped Mall, a threshold is proposed at the north end of the Ped Mall along Washington Street. The threshold functions as a 'safety buffer,' subtly separating pedestrians from the adjacent traffic. It could be a low wall, a planting area, or public art. It is imagined to be low, not exceeding 36" in height, and to afford views across the entry and viewing south within the Ped Mall.

Moving into Black Hawk Mini Park, a signature public art piece is proposed to anchor the north end. The feature piece may be interactive public artwork, a memorable water feature, or a structure such as an arch or obelisk. It is imagined to be significant enough to be visible as visitors and guests arrive to the downtown along Dubuque. The proposed threshold and the public art piece will work together to create a memorable and identifiable place and experience unique to Iowa City. To accomplish this, the planning team recommends the involvement of a public artist during the next design phase. The artist will be an integral part of the team, fully collaborating with team members and stakeholders.

Black Hawk Mini Park's history as a 'park for all and a celebration of free speech' is shared through a large 'story wall' at the southeasterly corner. The 'story walls' will recognize the people and events that have shaped Black Hawk Mini Park and Iowa City. Up lighting of the story walls lends drama and interest to the space at night.

A range of seating types are offered: benches, seat walls, movable tables and chairs, and limestone planter walls at seat height. The movable tables and chairs will be placed within intimate seating areas offering options to individuals or small groups. Per William H. Whyte, movable tables and chairs "give people a sense of empowerment, allowing them to sit wherever and in whatever orientation they desire." The success associated with movable tables and chairs has been observed in many notable public spaces such as Bryant Park and the new Grand Park in Los Angeles. Relatively affordable, the tables and chairs are offered in a range of easily identifiable, bold colors. Considering this is a new seating type for Iowa City, a trial period with four or five sets is recommended. This would allow an understanding of the labor involved with the placement and securing of the pieces. A trial period also offers the City a chance to measure public response and use prior to a more significant investment.

Canopy trees and colorful ground plane plantings define the seating areas. A small children's' play space is proposed at the south end and offers sculptural mounds for rolling and climbing and interactive artwork such as sound columns, dance chimes, and rain makers.



The "Spirit of Black Hawk"

"A little park with big history"

Black Hawk Mini Park took its name from the Sauk leader Black Hawk, whose image, in the form of a large mural, gave political and social meaning to the site. "The square became the site of demonstrations related to not only urban planning, but also to the Vietnam war and the American Indian movement."

[From "Paint the Town," little village, Nov. 2010]

["Spirit of Black Hawk", Iowa City Public Library]



A significant public art piece anchors the north entry and Black Hawk Mini Park.

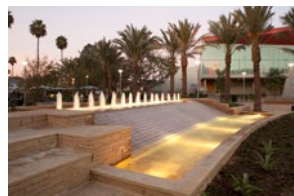
NEW PUBLIC ART PIECE

A feature public art piece stands in the center of the north edge of black hawk mini park. The public art piece will be designed to support secondary performances to recall the history of black hawk mini park as the 'free speech' park. The piece may be interactive public artwork, a memorable water feature, a structure such as an arch or an obelisk, or other to be determined during subsequent design phases.

INTERACTIVE



WATER FEATURE



STRUCTURE



Images offer general representations of what the piece could be, they are not indicative of a site specific installation.



Intimate seating areas have been created to offer seating options to individuals and groups. A small children's play area offers sculptural mounds for climbing and interactive art pieces.



Unique play opportunities

To offer a dynamic destination for children at the north section of the Ped Mall, sculptural mounds or similar are proposed at the new children's play area.



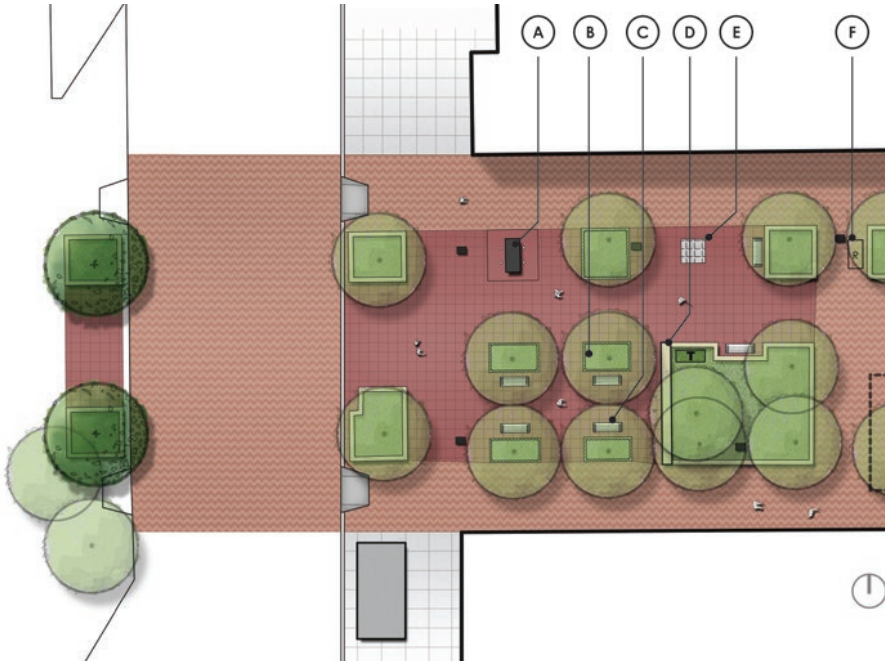
Seating choices

A place to sit is an invitation to stay and movable tables and chairs have proven to be a great option. They give people the chance to sit where they like, in whatever groups they choose, and to face one another or not.



Interactive artwork

Child-themed interactive art pieces can inspire, educate and allow individual expression. They can enlighten and entertain in a setting accessible to all.



CLINTON STREET ENTRY

The Clinton Street Entry becomes more welcoming and is reimagined with a new wayfinding kiosk, reconfigured seating, and a 'story wall'. The internally illuminated kiosk acts as a beacon of light, welcoming and providing a sense of arrival to a special place.

PLAN KEY

- A** Wayfinding kiosk
- B** Uplighting of trees at entry room
- C** Seating
- D** Story wall
- E** Existing public artwork
- F** Recycling station



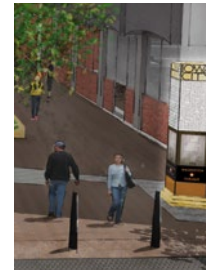
Existing conditions

An enhanced sense of arrival will improve the Clinton Street entry.



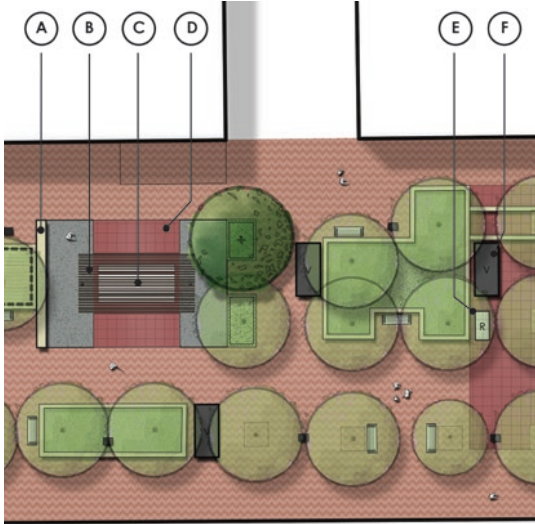
"Jazz" sculpture

Accent lighting at existing artwork will create a series of focal points to enhance the experience through the Ped Mall.



Wayfinding Kiosk

A new wayfinding kiosk is proposed to welcome guests and provide user orientation.



CAFE / VIDEO GARDEN

The proposed Cafe / Video garden includes a community table available to all Ped Mall users. A new structure shades the dining table and is illuminated for night time use. A state-of-the-art video wall adds new public art opportunities to the Ped Mall.

PLAN KEY

- A** Story wall
- B** Proposed shade structure
- C** Community dining table
- D** New pavement
- E** Recycling station
- F** Mobile vendor cart



Existing conditions

The existing fixed seating limits choice and feels undersized for the Ped Mall.



Community table

A community table is offered for patrons of limited service restaurants or just sitting outdoors working, or people watching, or for viewing the video art. An overhead structure is proposed to shade and define the community dining table.



Story wall with LED video

To recognize and celebrate technological advances and to engage a new generation of users, sound and media are introduced as new types of public artwork. A state-of-the-art LED video wall anchors the Video Garden and can be used for both video arts and movies. Its location adjacent to FilmScene reinforces the excitement and energy of film and video as art forms for the Ped Mall.



WEATHER DANCE FOUNTAIN AREA

The Weather Dance Fountain and Performance Space provides an interactive and unique experience for Ped Mall users.

PLAN KEY

- A Reorganized planters
- B Amphitheater seating
- C Story wall
- D Seat wall
- E Expansion of enhanced paving
- F Permanent stage
- G Wayfinding kiosk



Friday night concert

The events held at Weather Dance Fountain performance space are immensely popular and appeal to multiple user groups.



Weather Dance Fountain

Improving the slip resistance quality of the granite paving is recommended and to be explored during subsequent design phases.



Artwork at paving

The existing artwork in the paving and walls inspires the proposed planning concept and should be maintained as part of future enhancement plans.



The reconfiguration and/or elimination of select planters opens up the space and expands the opportunities for informal seating during performances and other events with higher pedestrian volumes.



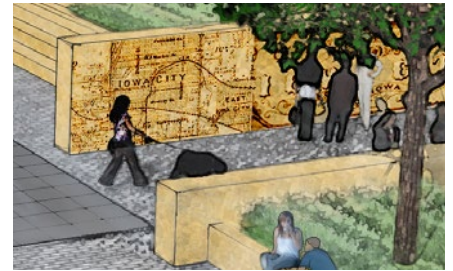
Character image, proposed stage

The stage is repositioned to align with the fountain and to become a focal point and terminus to the north-south view corridor. Envisioned as a light, modern structure with a solid canopy, it provides shelter from rain and offers shade during the summer months. Its exact size, shape, and location will be refined during subsequent design phases



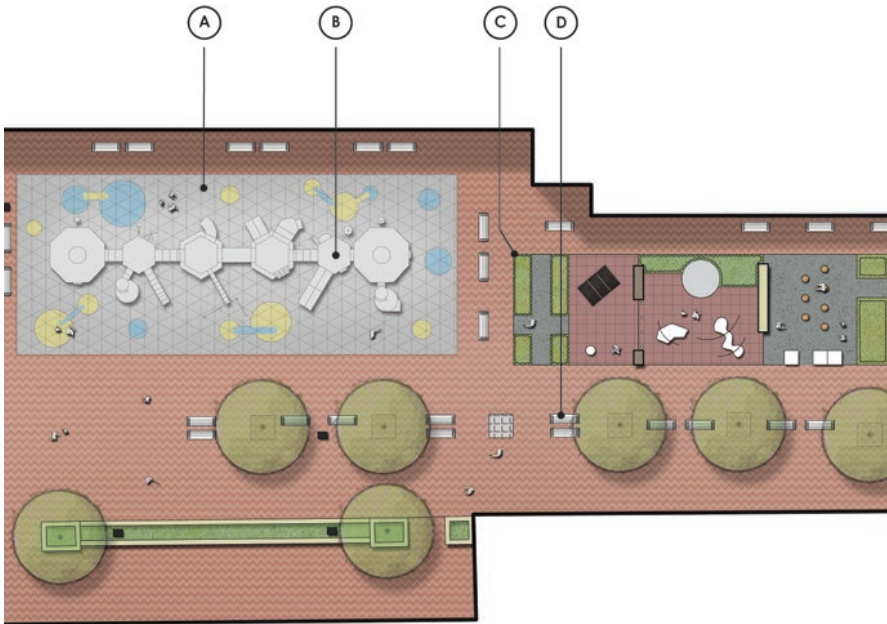
Fountain lighting

Enhanced fountain lighting is proposed to add a new dimension to the highly popular Weather Dance Fountain. The new layer of light adds color and energy and appealing views within the Ped Mall.



'Story wall' detailing example

'Story walls' can be detailed to celebrate the people and events that have shaped Iowa City. The walls help define the secondary destinations and are strategically placed to create an inspirational and experiential journey through the Ped Mall.



CHILDRENS PLAY ZONE

The traditional fixed play structure at the Iowa City Public Library is maintained in place and improved with new resilient rubber surfacing. A new opportunity for play is offered: an interactive EcoLAB is organized around themes of renewable energy, the cycle of water, recycling, and urban gardening and local food. Along the south side of the fixed play structure and EcoLAB, a focused 'gallery' of BenchMark benches are proposed.

PLAN KEY

- A New resilient rubber surfacing
- B Existing play equipment to remain
- C Eco LAB
- D BenchMark Benches



Renewable energy

Child-scaled interactive components teach children about wind and solar energy.



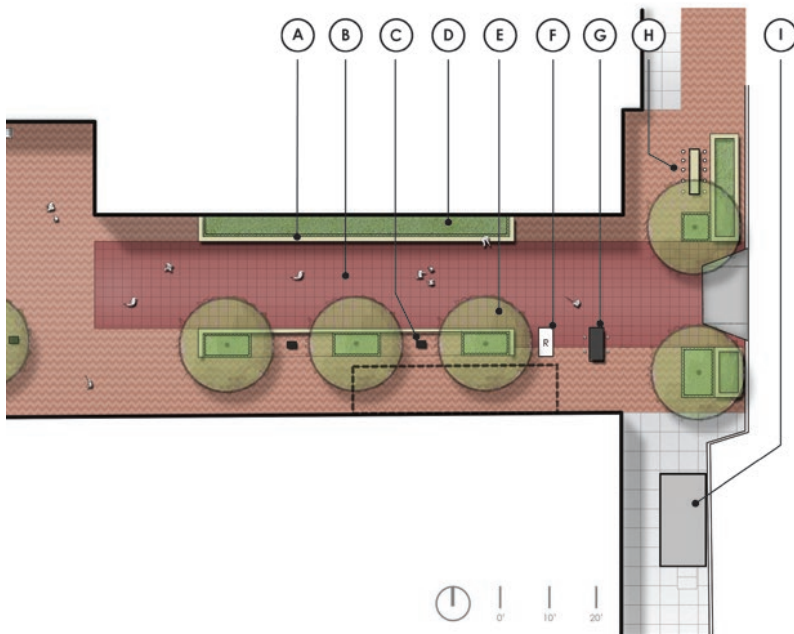
Recycling

Ongoing exhibits celebrate the re-purposing of materials.



Resilient rubber surface

New resilient rubber surfacing, sub-base and edge restraint are proposed at the existing play structure. The existing play surface is in need of an upgrade; the new surface will improve playground safety and extend the life of the play area. The surface can be interactive and include hopscotch and other games.



LINN STREET ENTRY

The proposed wayfinding kiosk, 'story wall,' and new lighting will contribute to an enhanced sense of arrival at the Linn Street Entry. Low walls offer seating along the Linn Street Entry and are introduced to address drainage concerns at the Bread Garden.

PLAN KEY

- A** Seat walls to improve drainage
- B** New unit pavers
- C** New lighting
- D** Shrub and groundcover plantings
- E** Existing tree
- F** Recycling station
- G** Wayfinding kiosk
- H** Story wall
- I** Bike shelter with photovoltaics



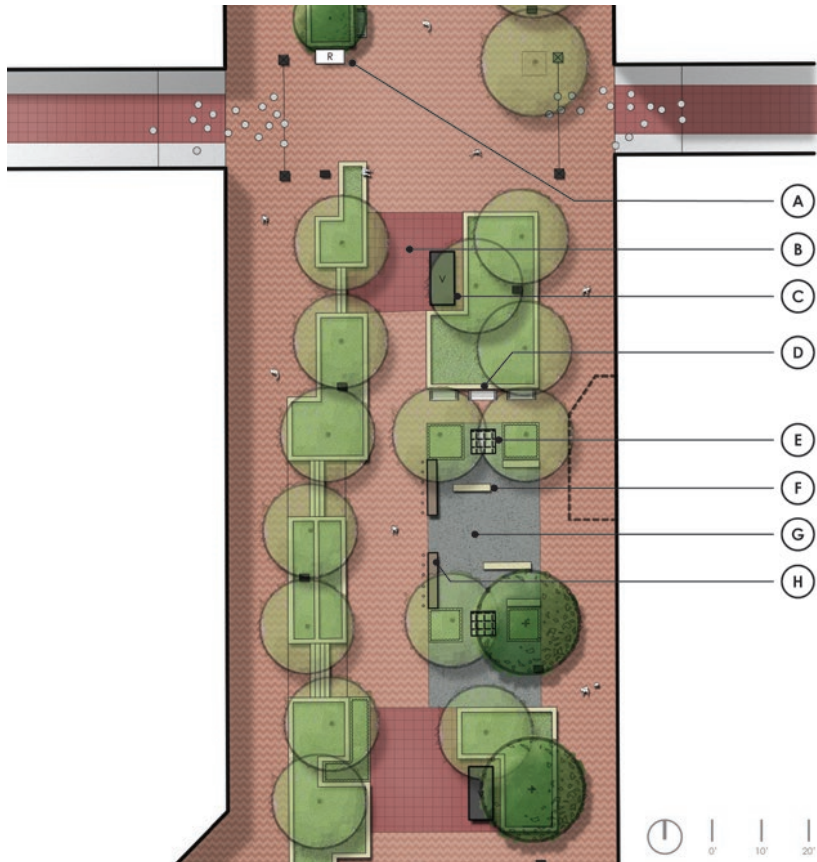
Existing conditions

Vehicular tracking can be seen at the paving at Linn Street entry, likely due to insufficient sub-base.



Limestone seat walls

Limestone seat walls, matching the character of existing limestone walls throughout the Ped Mall, are proposed south of the library to provide additional seating and improve drainage in the area.



CAFE / SOUND GARDEN

At the Sound Garden, benches are equipped with speakers and share spoken word, the works of local authors, and all forms of music and sound art. The Sound Garden is defined by threshold walls along the west edge and by public artwork on the north and south sides. Up lighting of existing trees adds drama and energy at night.

PLAN KEY

- A** Recycling station
- B** New unit pavers
- C** Vendor cart
- D** Seating
- E** Relocated public art
- F** Seat walls
- G** New unit paving
- H** Threshold walls



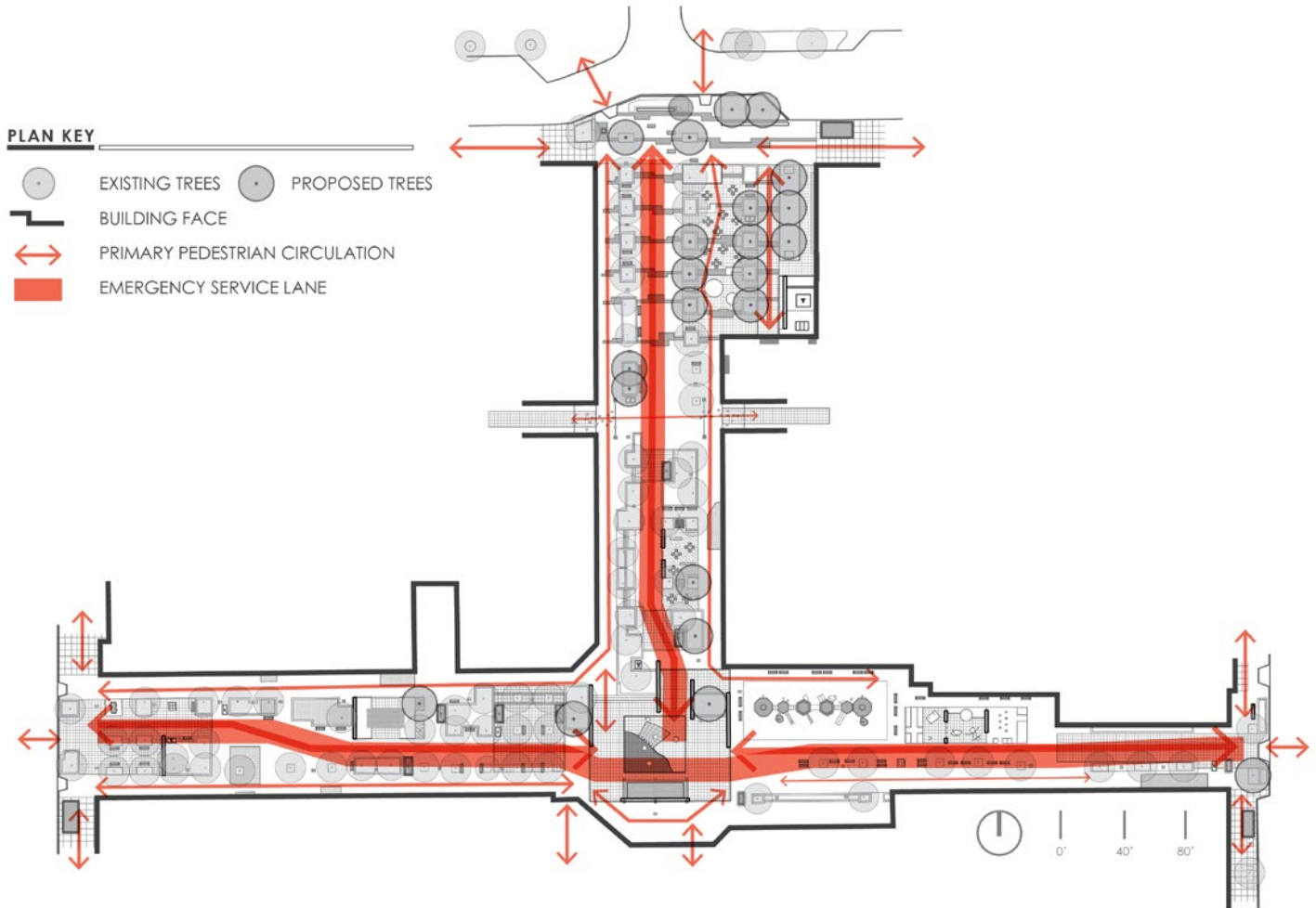
Fixed benches with speakers

A new type of public artwork is proposed: Fixed benches equipped with speakers relay all forms of sound art



"Treasure Island"

The existing "Treasure Island" artwork is relocated to become a feature within the cafe / sound garden.



CIRCULATION

An 'emergency service use only' lane is centrally located along both the north-south and the east-west sections of the Ped Mall. The lane is also used by City maintenance vehicles and by the mobile vendor cart operators for loading and unloading. In its current configuration, it is 14' wide at its most narrow dimension near the north end of the Ped Mall. The lane will be included in future designs for the Ped Mall but may take on a slightly different alignment to accommodate future improvements. The proposed alignment will accommodate the emergency vehicle turning radii requirements.

Primary pedestrian circulation occurs along the existing, centrally located emergency service use lane and along the storefronts. There are a multitude of secondary pathways within the Ped Mall bounds which encourage a sense of individual choice and spontaneity.

- The unobstructed clear zone for emergency service use must be included in all proposed Ped Mall improvement plans.
- Offer options to relieve pedestrian congestion during events at the Weather Dance Fountain performance space.

PLAN KEY

-  EXISTING TREES
-  PROPOSED TREES
-  BUILDING FACE
-  ENHANCED ELECTRICAL CAPACITY



ELECTRICAL ENHANCEMENTS

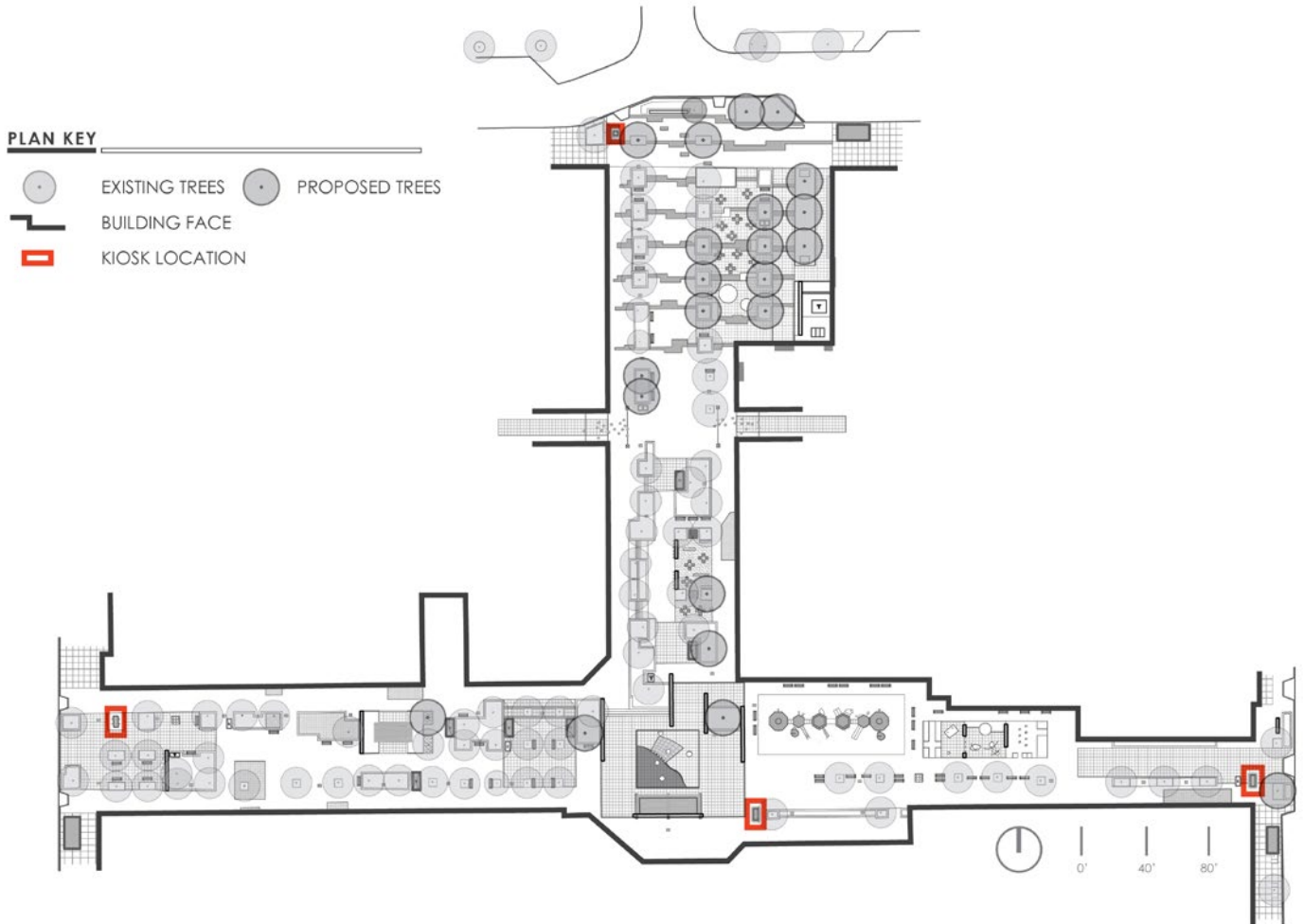
One of the key project goals has been to improve the electrical capacity across the Ped Mall and for the mobile vendors. New capacity will be offered by electrical distribution bollards, standard receptacles, or other means. Further exploration of the existing underground utilities is recommended during subsequent design phases to determine the feasibility of adding more capacity at existing locations and to identify locations for new underground conduit.



Existing electrical outlet in planting area



Example of enhanced electrical capacity bollards as manufactured by Hess. The bollards are approximately 48" in height and are customizable, offering up to 8 circuits per box.



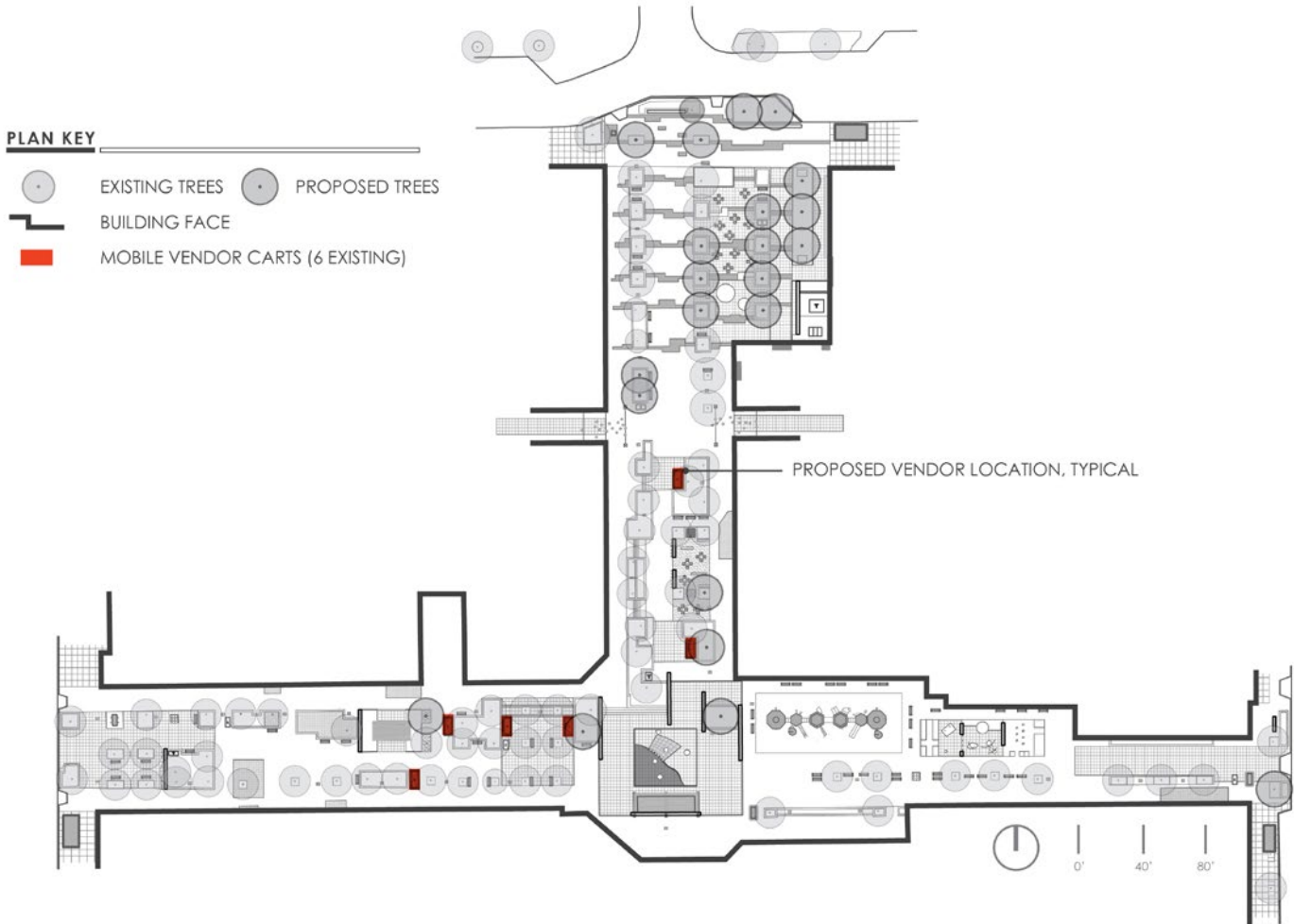
KIOSK LOCATIONS

Wayfinding kiosks are proposed at four locations: at each of the three entries and at the southeast corner of the Weather Dance Fountain performance space. Proposed kiosks are lighter and smaller in scale. The metal screen design concept weaves “Iowa City” into kiosks and gateway elements, reminding the user where they are and what opportunities exist around them.



Wayfinding Kiosk

At night, the wayfinding kiosk would be illuminated and serve as a glowing beacon to people in search of information.



VENDOR LOCATIONS

Mobile vending carts are a significant feature of the Ped Mall and receive great use during the late evening hours. By Code, there are a total of six mobile vending permits issued for the Ped Mall. Their locations are assigned. To better understand the needs and concerns of the vendors, the planning team met with the vendors in August. Their list of requests and concerns follows.

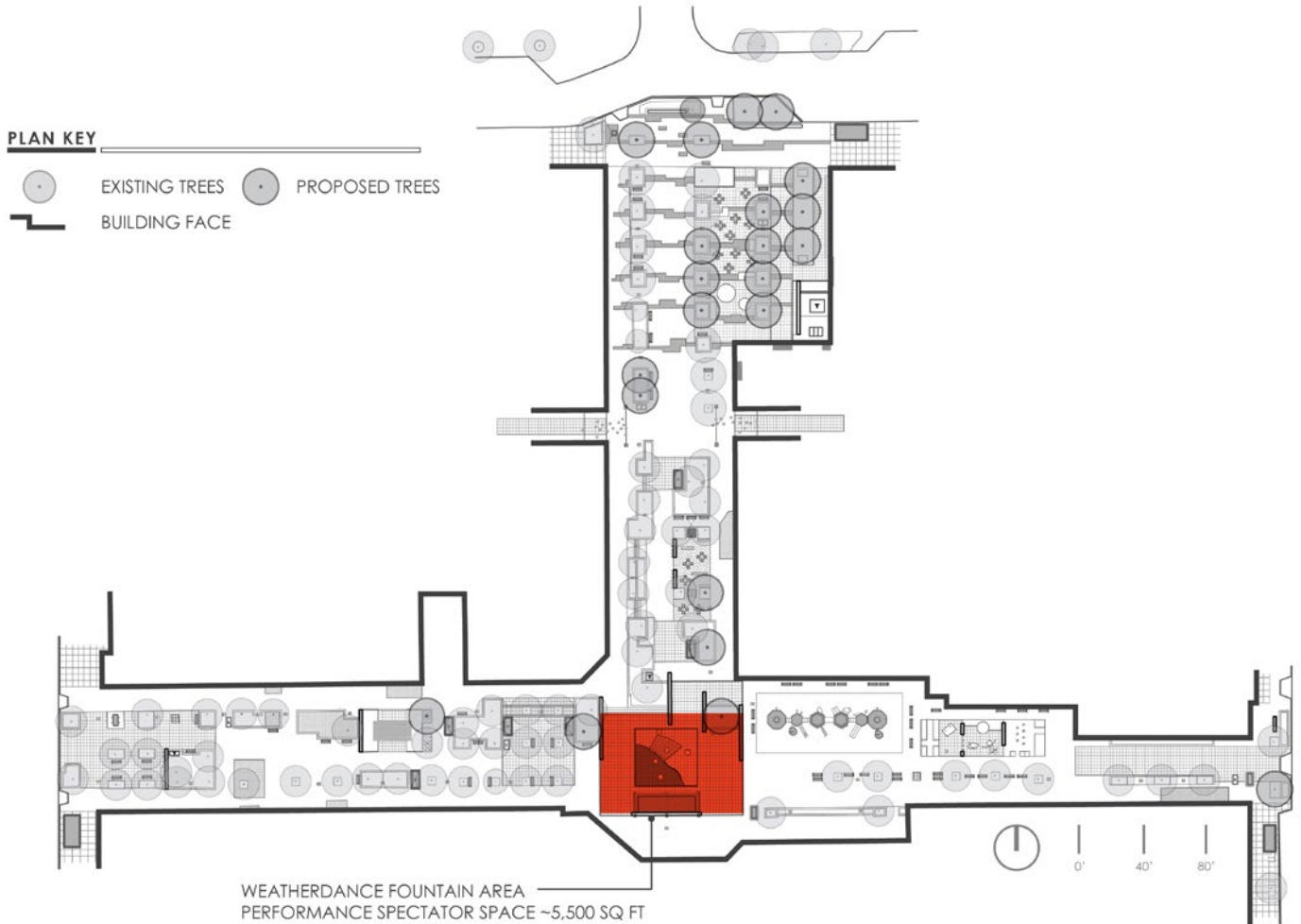
- Vendors stressed the importance of maintaining the assigned locations, 'staying in the same location is very important to us'.
- Vendors would be interested in a day spot, or second assigned location, closer to the north end of Ped Mall.
- 'Having a structure or wall behind us for security purposes is very important'.
- The electrical capacity is inadequate and the outlets are mounted too low.
- The existing Ped Mall lighting is inadequate.

- Vendors would like to be included on downtown business mapping.
- Vendors would like an assigned location during festivals.

Minimal adjustments to the assigned locations were made. Locations were shifted to afford a 'back' to the location and to relieve pedestrian congestion during periods of high pedestrian volumes.



Existing vendor cart

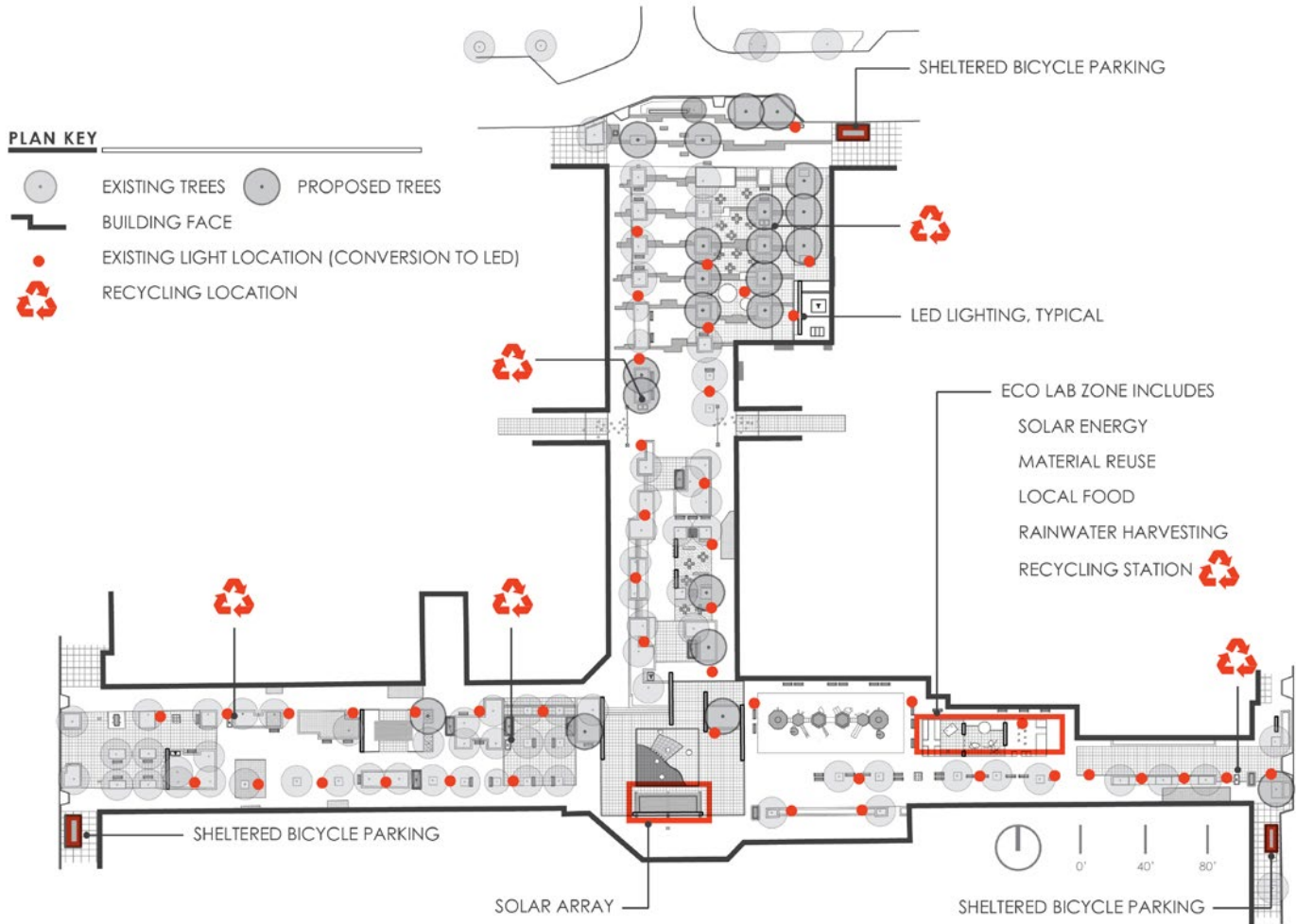


PERFORMANCE AREA

The permanent stage is re-imagined as a focal point and terminus to the north-south view corridor at the Weather Dance Fountain. Envisioned as a light, modern, solid canopy structure, it provides shelter from rain and offers shade during the summer months. The proposed stage is repositioned to align with the fountain. Its exact size, shape, and location will be refined during subsequent design phases. Design considerations should include first floor windows from the Sheraton Hotel, pedestrian circulation during events, emergency service vehicle access and turning radii.



Character imagery for proposed permanent stage at Weather Dance Fountain



SUSTAINABILITY

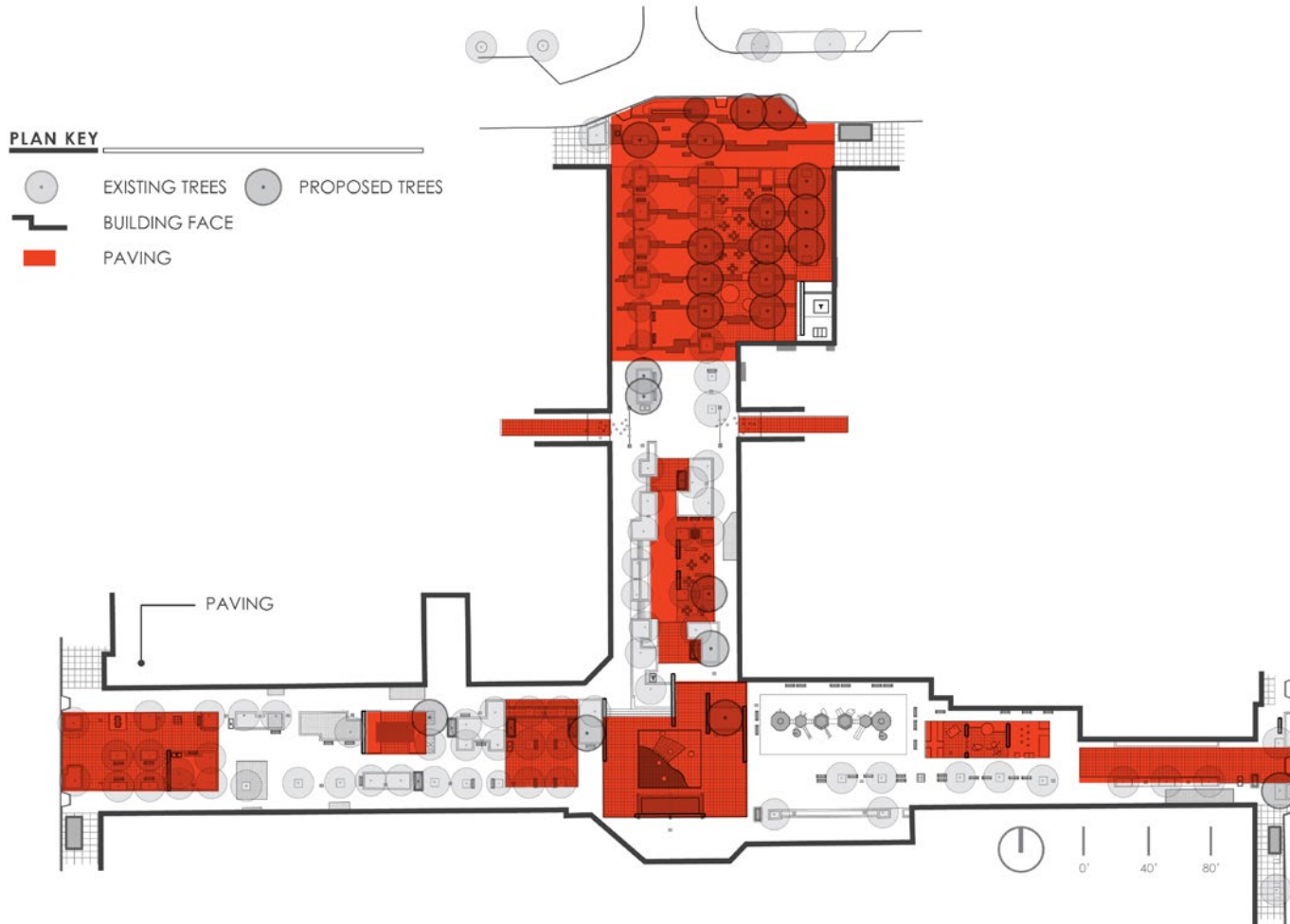
The team identified opportunities for varied sustainable strategies across the Ped Mall. All will require further exploration in subsequent design phases.

- Install 6 recycling stations at select locations across the Ped Mall. Public input consistently indicated a desire for additional recycling containers. They demonstrate Iowa City's concern for the environment and the importance of reprocessing and reuse.
- Convert the existing lighting system to LED. There are many proven advantages and benefits to LED lighting systems: Long life, energy efficiency, ecologically friendly, durable, limited UV emissions, and are considered ideal for operation in Iowa's extreme cold or hot temperatures.
- An interactive EcoLAB is proposed at the children's play zone with themes of recycling, the cycle of water, urban gardening and local food, and renewable energy. The EcoLAB will inspire, entertain, and demonstrate the City's commitment to sustainability. It will offer unique opportunities to teach children and youth about the importance of community and stewardship.

- Sheltered bicycle accommodations are proposed at each of the Ped Mall entries to promote bicycle use and walkability downtown. The shelters will help keep bicycles dry and protected during inclement weather. The shelters can be equipped with photovoltaic for safe illumination during the night time hours.



Big Belly Solar Compactor

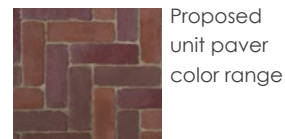
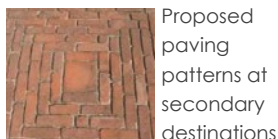
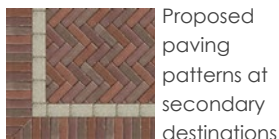
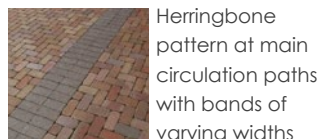


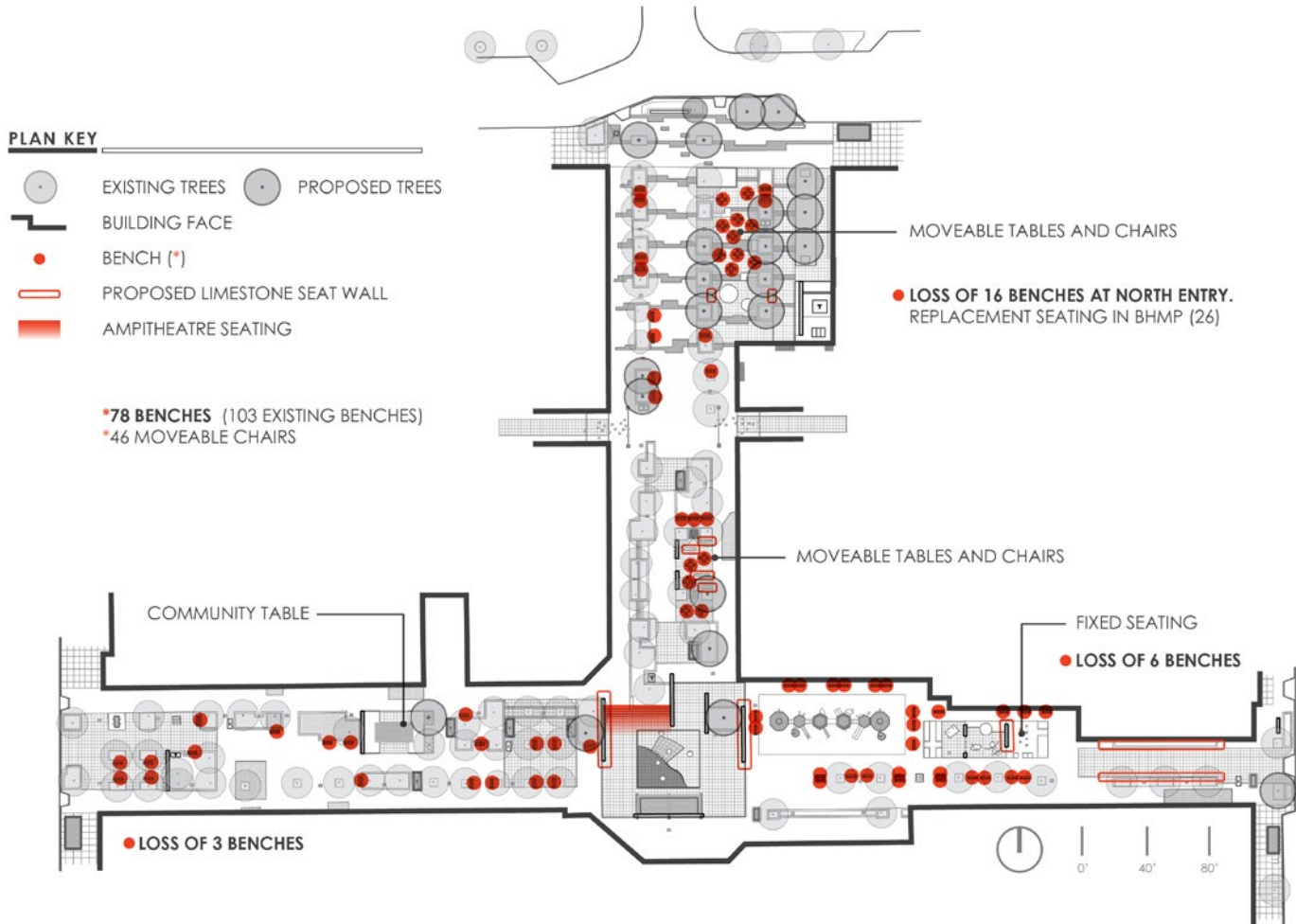
PAVING

The existing pedestrian mall is paved using clay brick with the majority of the bricks laid in a herringbone pattern. Public feedback consistently advocated for improved surfacing at the Ped Mall. The planning team repeatedly heard comments such as ‘the sidewalks and brick pavers need the most attention’ and ‘the brick paving is slick, dangerous, and uneven.’

Full replacement of the existing clay brick paving was determined to be cost prohibitive. Where paving is failing and needs to be replaced, precast concrete pavers of a similar module, 4" x 8", are proposed. The similar module will help integrate the old and the new. The proposed finish, possibly an exposed aggregate and granite chip finish, would offer greater slip resistance during inclement weather.

- Replace paving at areas where the paving is uneven, heaving, deteriorating
- Replace paving at secondary destinations. At the secondary destinations, introduce paving details that recall and complement the patterns and details found on historical buildings
- As feasible, per existing conditions, maintain clay brick, herringbone pattern at main circulation pathways and along emergency service lane. Offer relief to the field of pavers with bands of unit pavers of varying widths and lengths.





SEATING

There was minimal public or stakeholder comment regarding the actual seating types currently available. With approximately one hundred benches located throughout the Pedestrian Mall, seating appears to be widely available. The existing benches are wooden slat with metal frame and individualized through the BenchMarks program (described in the upcoming 'public art' section). Seat-high limestone planter walls also offer seating and are available throughout the Pedestrian Mall.

The plan calls for a comparable quantity of seating but accomplished with a wider range of seating types, including some new fixed benches and some moveable tables and chairs that can accommodate different seating patterns. The intent is that users can make and define their own seating areas, find a solitary spot or form conversation groups.

The plan also reconfigures seating arrangements within each secondary destination. Further review of the existing benches and their mounting condition during subsequent design phases is required to determine the exact quantity of replacement benches

- Existing and proposed seat-high limestone planter walls
- Replace failing benches with new fixed benches with center arm, reconfigured at secondary destinations
- Create a BenchMarks 'gallery' along the south side of the Pedestrian Mall, east section
- Introduce moveable tables and chairs
- Offer stepped, amphitheater-like seating at Weather Dance Fountain performance space
- Include a community dining table at the Video Garden
- Offer benches equipped with speakers at the Sound Garden as a new type of public artwork



Option 1: The design of the Plainwell Bench by Landscape Forms is timeless and durable. It is available in FSC-certified woods or metal to complement the bench used along the downtown streetscapes. A center arm is recommended for benches 72" in length.



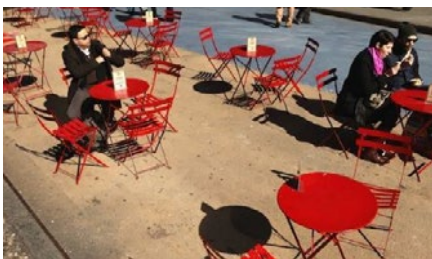
Option 2: For a more simple and modern aesthetic, the Forms + Surfaces Knight Bench is offered as a seating option for the Ped Mall. The bench is made of FSC 100% lpe or reclaimed teak with high recycled content.



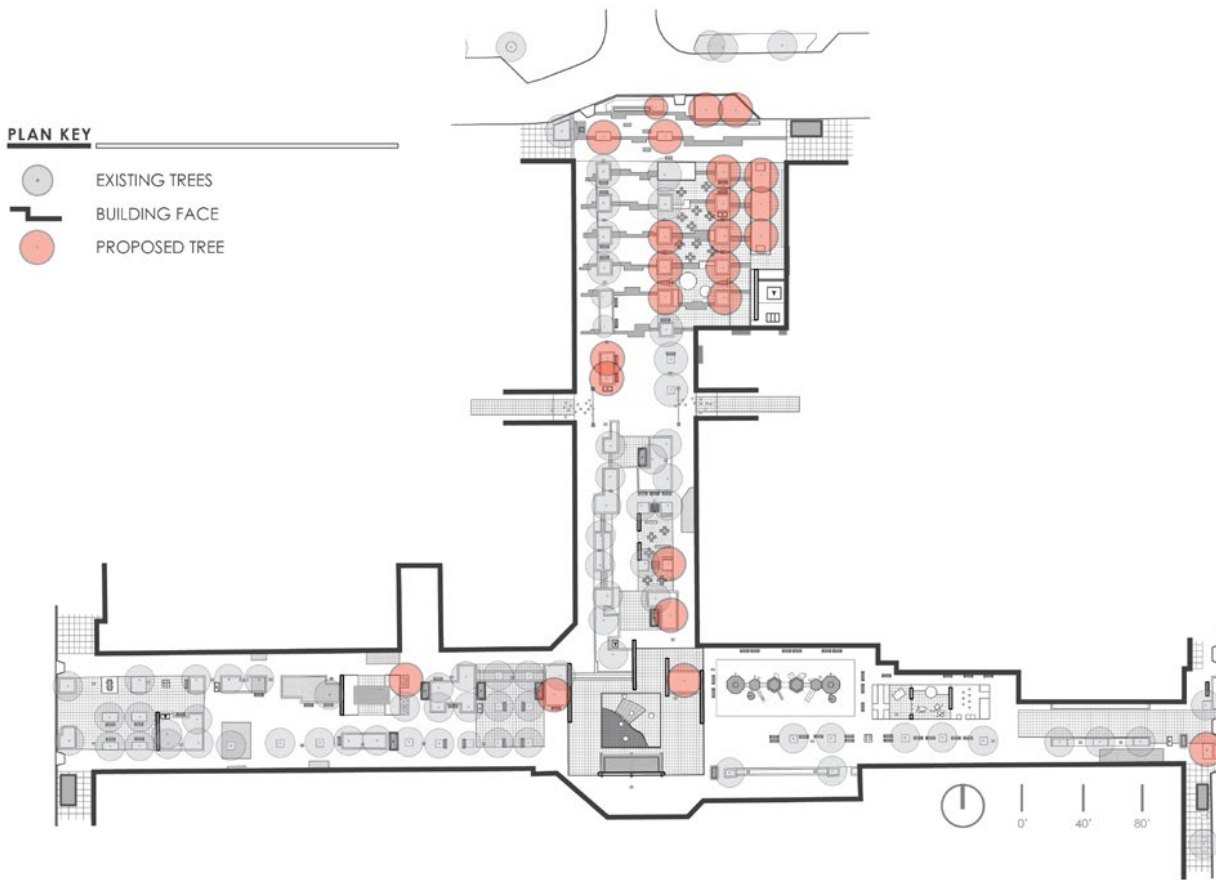
To better focus and feature the ICDD Community Gallery program, a Benchmark 'Gallery' is proposed along the east section of Pedestrian Mall adjacent to the Children's play zone.



The Café / Video Garden includes a community dining table. Here, limited service restaurant patrons will have the chance to eat and mix with all kinds of different people.



Movable tables and chairs are proposed at Black Hawk Mini Park. They offer choice, flexibility, and give people the chance to sit wherever they want. Brightly painted in a bold color (final color to be determined), they will be instantly recognizable.



IOWA CITY DOWNTOWN AND PEDESTRIAN MALL STREETScape PLAN UPDATE | PEDESTRIAN MALL CONCEPT DEVELOPMENT | PROPOSED TREES

GENUS LANDSCAPE ARCHITECTS | studioINSITE | CONSERVATION DESIGN FORUM | MMS CONSULTANTS | KCL ENGINEERING | ARTHOUSE DESIGN | MINDMIXER

FEBRUARY 2013

TREES

The mature tree canopy is a significant asset for the Ped Mall and the preservation of existing trees, to the extent possible, is a project goal. The trees yield a number of benefits: they moderate the scale of the space, enhance pedestrian comfort and usability, provide a 'ceiling' or sense of enclosure to the Ped Mall, and produce shade.

However, in urban conditions and in raised planters such as those seen across the Ped Mall, trees have a limited life span and some of the trees are showing signs of decline. A few of the trees have structural defects such as cracks or overextended canopies. Regarding their placement, a few of the trees obstruct primary circulation routes as well as significant views. In addition, the combination of the closely spaced trees and the dense, mature tree canopies impacts the illumination levels and the Ped Mall can feel dark even during the daytime hours.

- The planning team recommends the City hire a certified arborist to review, inventory, and analyze the existing trees and to identify high value trees
- Consider structural pruning or thinning of the crown on trees identified as high value by the arborist. Thinning of select species will also open up views and afford filtered sunlight into the Ped Mall
- Define an ongoing pruning and thinning maintenance program for the trees
- Consider up-lighting at select trees
- During subsequent design phases, identify a phased tree planting program



Ginkgo biloba 'Princeton Sentry'



Amelanchier laevis 'Cumulus'



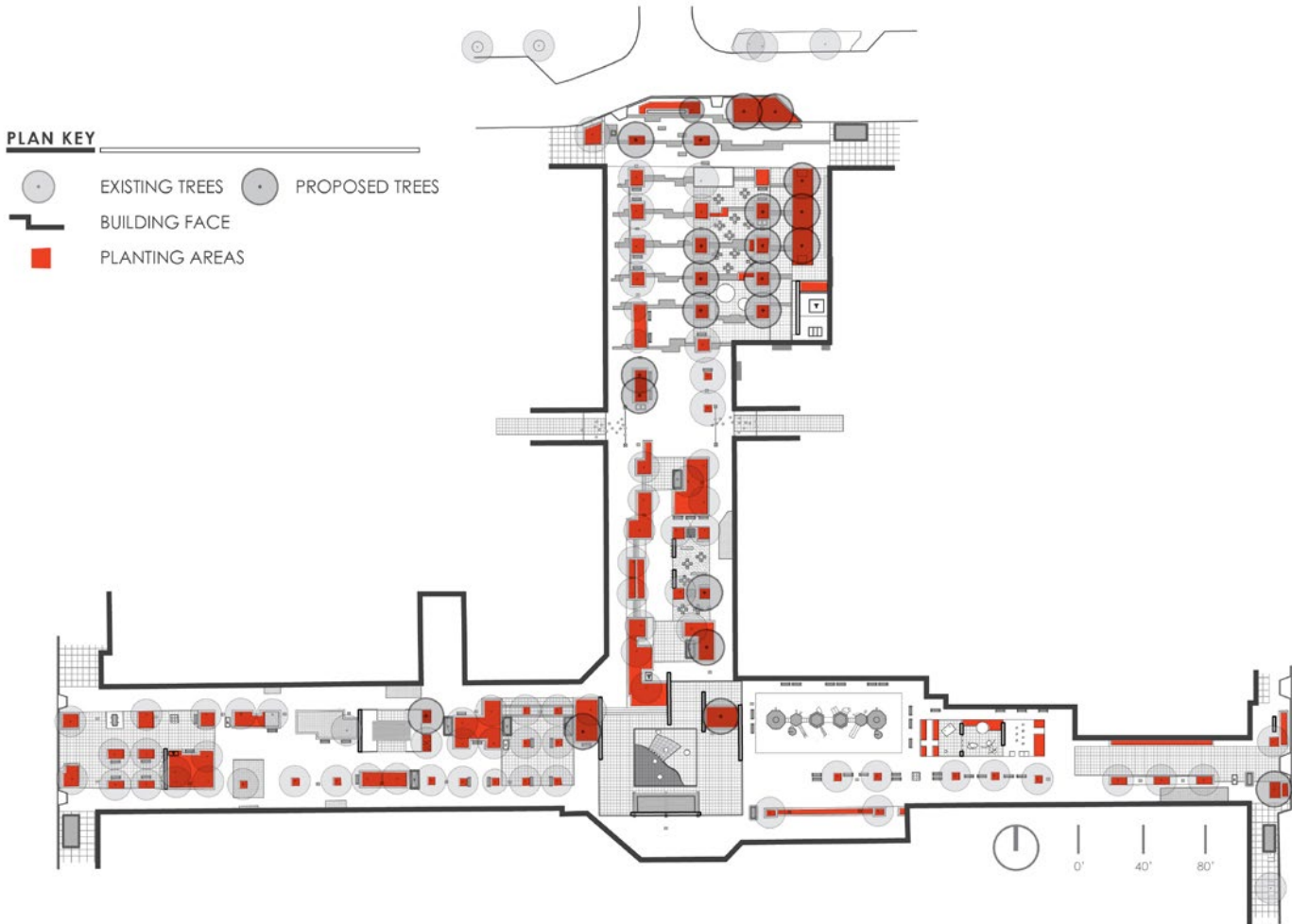
Honey Locust



Acer rubrum 'Karpick'

Other tree options:

- Quercus rubra* 'Regal Prince'
- Quercus rubra* 'Crimson Spire'
- Plantanus occidentalis*
- Populus tremuloides*
- Acer rubrum* 'Bowhall'



PLANTING AREAS

Stakeholder and public input indicated a strong interest in adding seasonal planting displays at select locations. The dynamic color and lush seasonal planting designs will soften the hardscape and unify the Ped Mall planting areas. Other shrub and groundcover planting opportunities are listed to the right.

- Add seasonal planting displays for color and variety at select locations including the entries and at Black Hawk Mini Park
- Introduce a durable, evergreen shrub planting as a background or foundation plant supported by other low maintenance shrub and groundcover plantings in the foreground.
- As feasible, install an irrigation system using 'SMART' irrigation technology including rain sensors.
- Consider stormwater harvesting and re-use for irrigation at the new Black Hawk Mini Park planting areas.
- Include urban garden/local food opportunities at the EcoLAB
- Install decorative planter fencing at improved tree pits to deter pedestrians from walking through planting areas.



Seasonal color displays at select planters with decorative metal fencing



Taxus x media 'Everglow'



Pachysandra terminalis

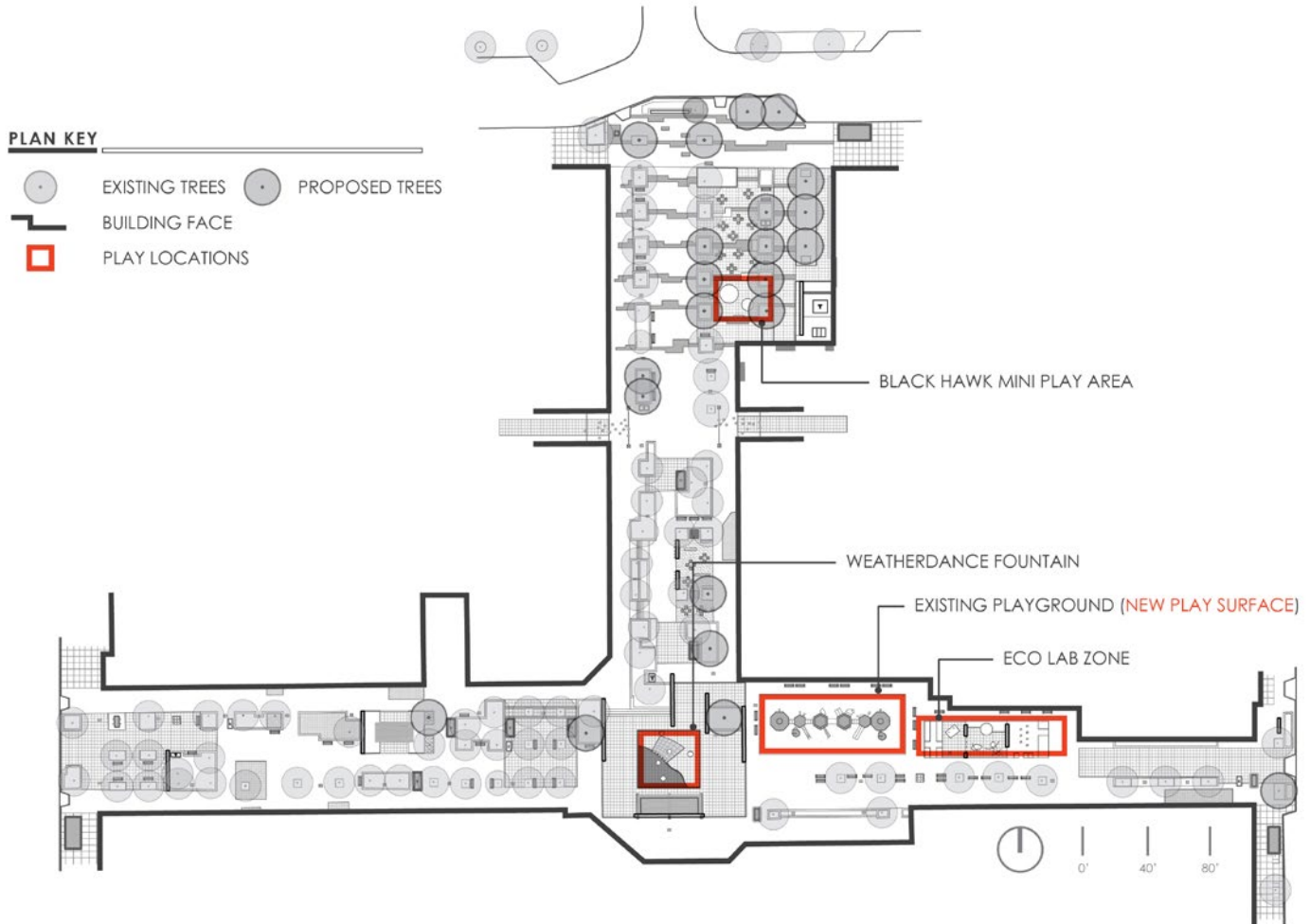


Decorative fencing proposed at enlarged tree pit



Buxus microphylla 'Green Gem'

Other shrub & groundcover options:
Rhus aromatic 'Gro Low'
Ilex verticillata 'Nana'
Ajuga reptans 'Catlin'



PLAY

The provision of space for play attracts families and adds to the vibrancy of the Ped Mall. The existing traditional play structure at ICPL is tremendously popular. The Weather Dance fountain is also a highlight for children and families inviting them to play and interact with the water.

Throughout the public input process, the planning team recognized the importance of maintaining the existing play structure while at the same time, offering additional opportunities for play throughout the Ped Mall. The existing play structure area is improved with new resilient rubber surfacing with a new sub-base and edge restraint. (The current play surface was installed approximately 15 years ago and is showing signs of wear.)

The current plan offers two new opportunities for play. A small play space is proposed at the south end of Black Hawk Mini Park. It may include sculptural mounds for rolling and climbing and interactive child-themed public artwork such as sound columns, dance chimes, and rain makers.

Just east of the existing play structure, the EcoLAB is imagined as an interactive, educational experience. It could be organized around varied themes: urban gardens and local food, renewable energy, the cycle of water, and the re-purposing and re-use of materials. Themes will be developed and refined during subsequent design phases.

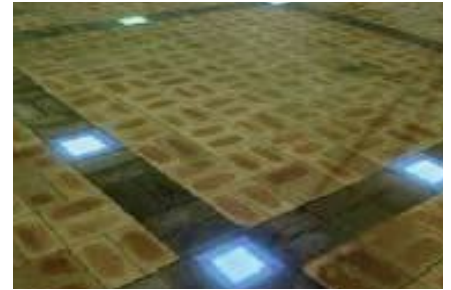
- Improve the play experience at the existing structure with new resilient rubber surfacing
- The proposed EcoLAB offers an interactive, educational component to the children's' play zone at ICPL
- A small play space is proposed at the Black Hawk Mini Park
- Improve the slip resistance quality of the existing granite pavers at Weather Dance Fountain.



Urban gardening and local food



Existing playground



Solar pavers



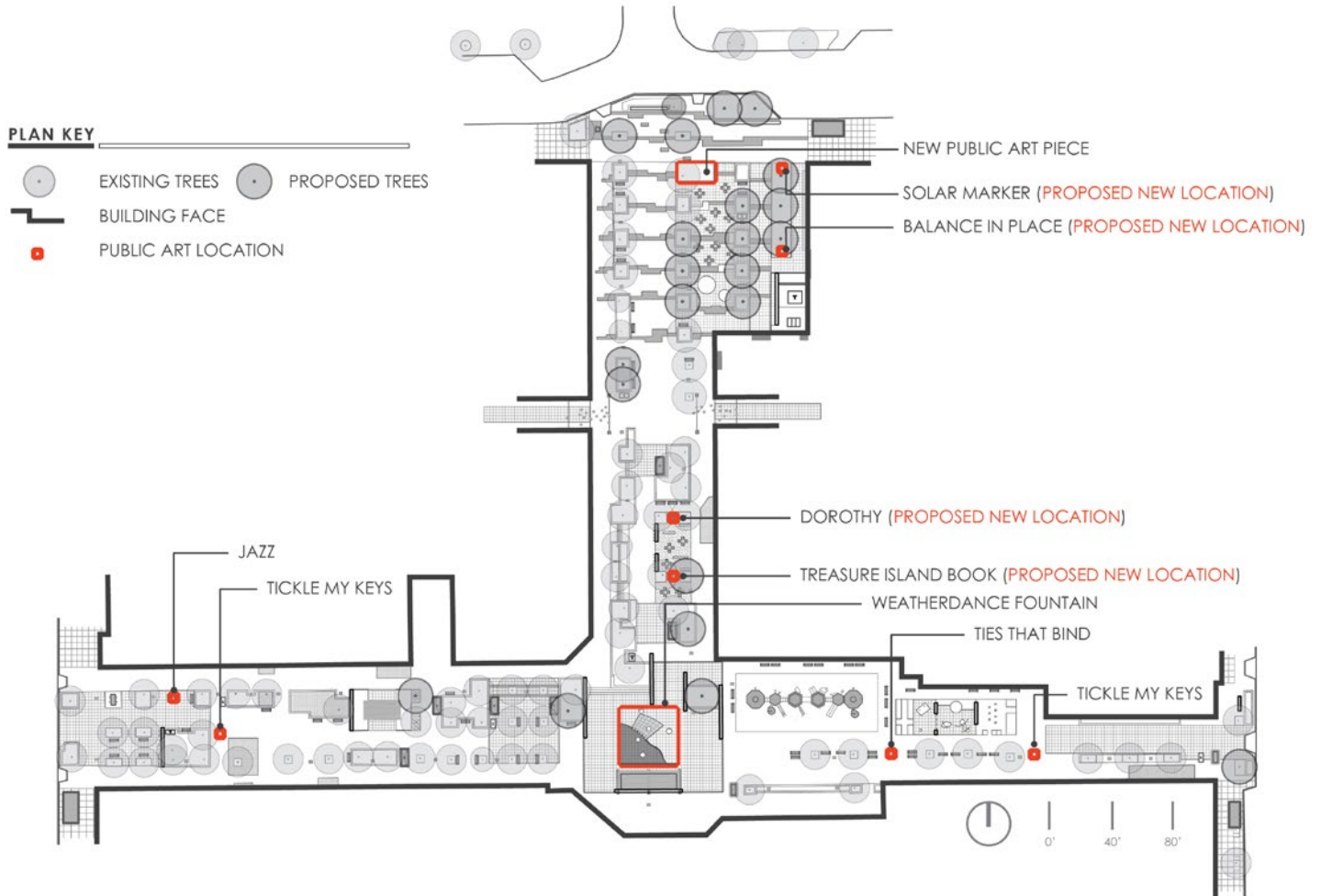
Eco art



Windchimes



New Resilient rubber surfacing at existing play structure



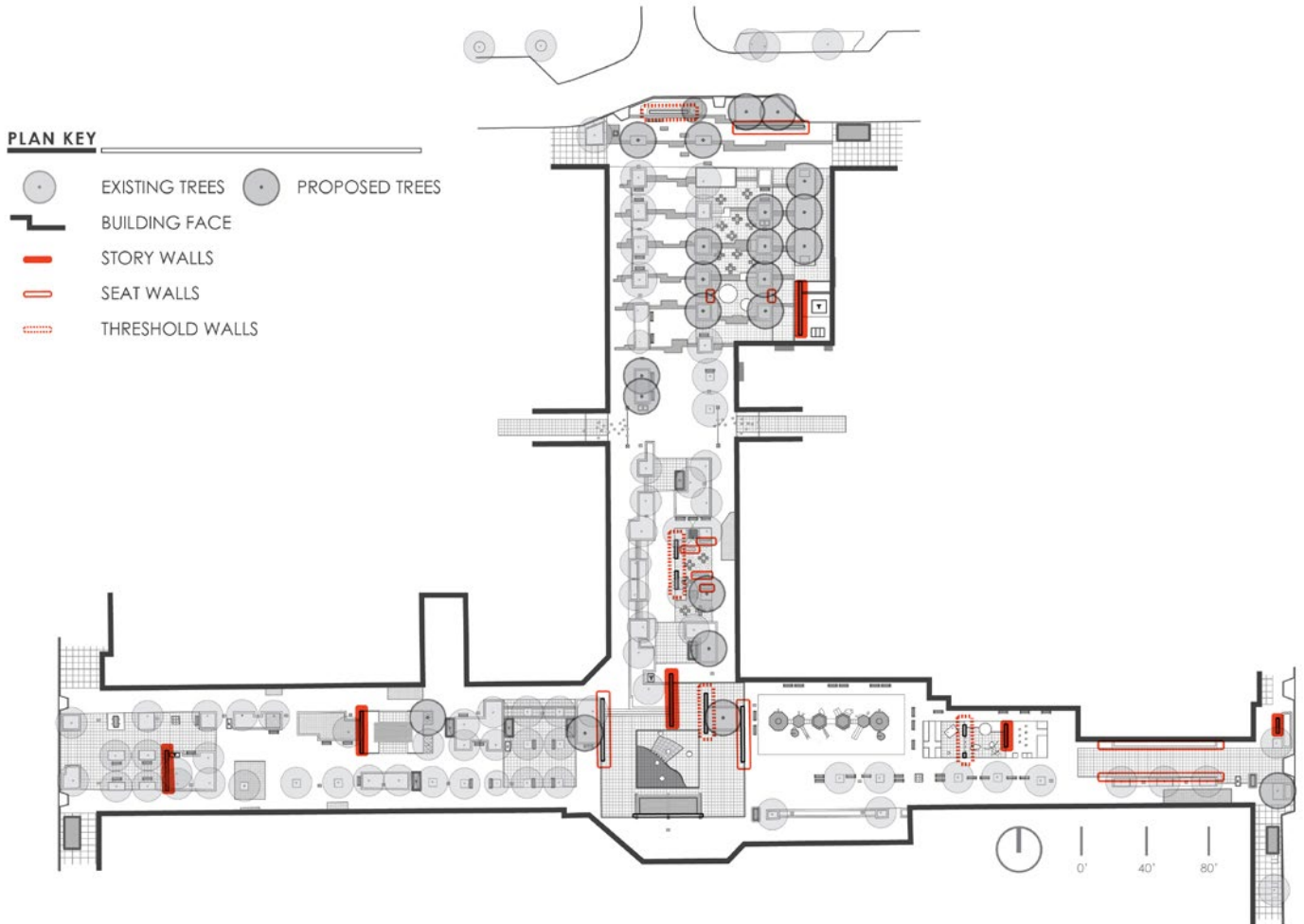
PUBLIC ART

The public art installations across the Ped Mall make the destination more memorable and unique. A broad range of installations can be seen including traditional bronze sculptures, ephemeral works featuring the works of local artists, and interactive public pianos. There are three ongoing Community Gallery projects at the Ped Mall: BenchMarks, public pianos and Tree Huggers. The majority of the existing public artwork is maintained in place. Relocation is proposed for four pieces so they become more of a feature to secondary destinations. Opportunities for new public art follow.

- The pedestrian mall planning concept proposes a significant public art piece to anchor the Black Hawk Mini Park and the north entry. The feature piece may be interactive public artwork, a memorable water feature, or a structure such as an arch or obelisk. It is imagined to be significant enough to be visible as visitors and guests approach the north end of the Ped Mall from Dubuque.
- 'Story Walls' organize the Ped Mall and become artistic features within the new secondary destinations. The 'story walls' may celebrate the people and events

that have shaped Iowa City. Their materiality, scale, and location will be studied during subsequent design phases.

- To recognize and celebrate technological advances and to engage a new generation of users, two new types of public artwork are proposed for the Ped Mall: sound and media. A state-of-the-art LED video wall anchors the Video Garden and can be used for both video arts and movies. At the Sound Garden, benches are equipped with speakers and share spoken word, the works of local authors, and all forms of music and sound art.
- Consider collaboration with the original Weather Dance fountain artists to improve definition of the performance space through the use of enhanced paving and the original art walls.
- Consider 'eco-art' at the proposed EcoLAB.
- To create focal points while strolling through the Ped Mall, install up-lighting at select artworks.
- Create a BenchMarks 'gallery' along the south side of the Ped Mall, east section.



SITE ORGANIZING ELEMENTS

Three categories of site organizing elements are introduced to the Ped Mall and include 'Story Walls', seat walls, and threshold walls. Their purpose is fourfold: to announce and define secondary destinations, to reinforce and complement the existing materials vocabulary, to provide additional seating opportunities, and to share the history of Iowa City. Their materiality, scale and location will be studied and refined during subsequent design phases.

- The 'Story Walls' celebrate the events and people that have shaped Iowa City. They celebrate the artists such as Greg Brown, Paul Engle, Grant Wood, and William Engert. They celebrate the women such as Helen Lemme, Gretchen Harshbarger, and Emma Harvat. They celebrate the African Americans such as Elizabeth Tate, Fred Penny / Bethel A.M.E. Church. And, they celebrate the many innovators such as James Van Allen and Moffit and Blakesley. During subsequent design phases, the public and stakeholders will contribute to this list.
- Seat walls are located near the Weather Dance Fountain performance space and at the Linn Street entry. At the Linn Street entry, the seat walls aid in the ad-

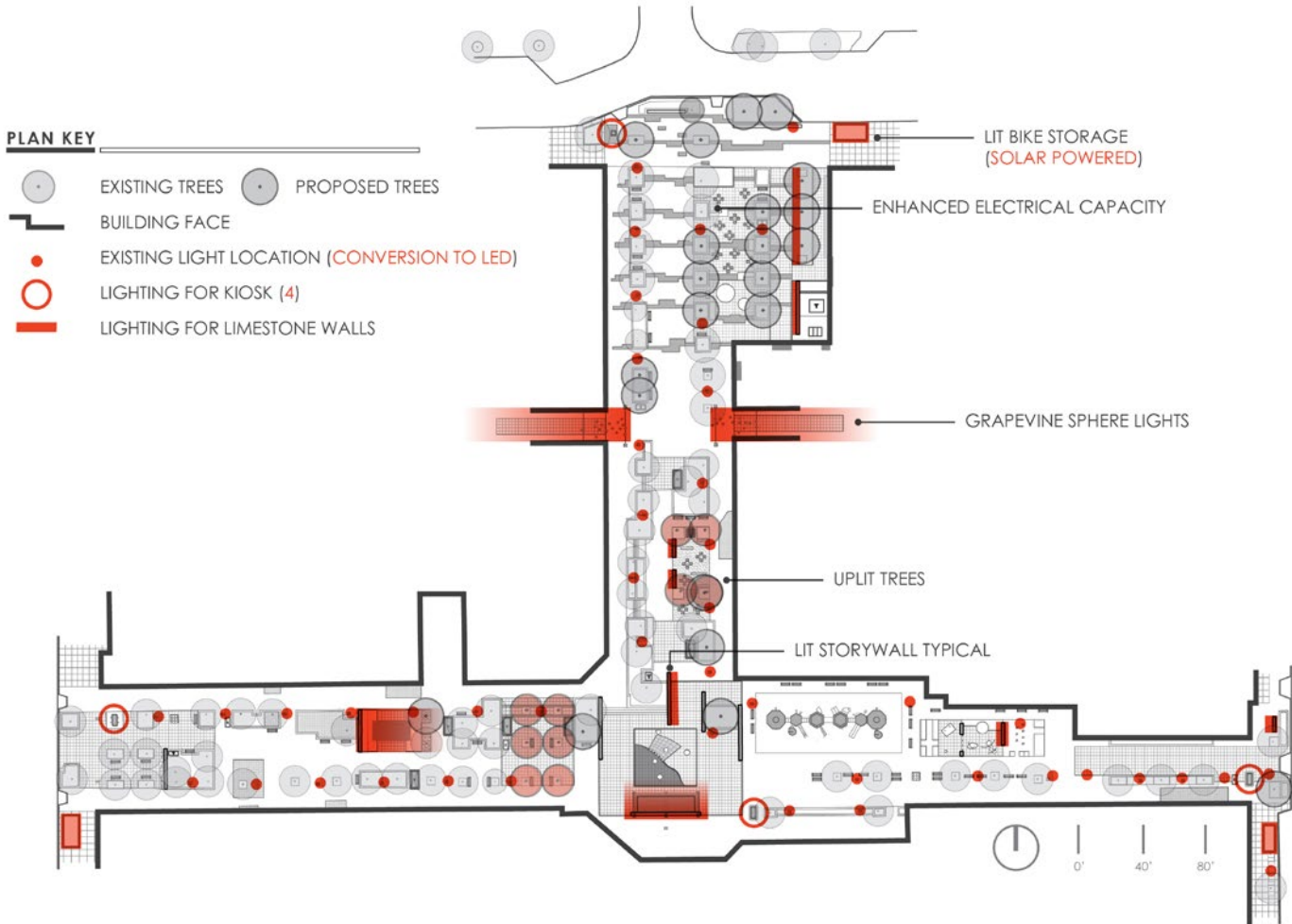
justment of finish grade to address drainage shortcomings and storm water areas of concern. Seat walls equipped with speakers are proposed at the Sound Garden. The seat walls are approximately 18" - 24" in height.

- Threshold walls announce and define secondary destinations. Threshold walls are approximately 36" in height.



'Story Wall' character

Quotations from celebrated Iowa City writers, artists and musicians events could be engraved on the stone story walls.



LIGHTING

Public feedback and stakeholder input consistently advocated for improved lighting and layers of accent lighting including seasonal lighting options. As determined during the site assessment phase, the current fixtures are reaching the end of their serviceable life and their illumination levels are impacted by the mature tree canopy.

The proposed multi-layered lighting framework attempts to create a sustainable, more memorable, and evocative destination with a range of lighting options. To meet safety and functional light levels, new pedestrian scale poles and luminaries are proposed at the same location as the existing lights. A direct one-for-one replacement was assumed. The proposed lights will offer better light quality and are equipped with the latest LED technology to improve energy efficiency. As an example, for the existing Ped Mall lighting system, total energy usage approximates 20,550 Watts (total decorative lighting usage approximates 17,010 Watts and the existing floodlights use approximately 3,540 Watts).

The conversion to LED would reduce the energy usage from 20,550 to 9,570 Watts (8,910 Watts for decorative

lighting and 660 Watts for replacement floodlighting), for a possible total estimated energy reduction of 53.4%.

- Up lighting at select trees
- Up-light story walls
- Enhanced water feature lighting at Weather Dance Fountain, including rolling color option
- Up lighting of significant pieces of public art to provide focal points
- Accent lighting at proposed public art piece at Black Hawk Mini Park
- Illumination of proposed structures including permanent stage, wayfinding kiosks, and sheltered bicycle accommodations



The up-lighting of select trees will help define the secondary destinations, create atmosphere, and will add a sense of depth to the Ped Mall.



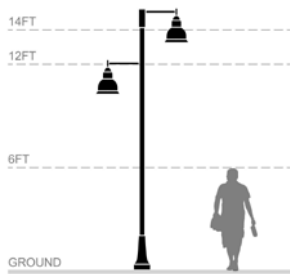
Up-lights proposed at the story walls will draw attention to their level of detailing and will enhance the experience of strolling through the Ped Mall.



Enhanced fountain lighting adds focus and energy to the popular Weather Dance Fountain during the night time hours.



The illumination of the canopy and architectural details will make the proposed stage an ideal focal point from numerous vantage points throughout the Ped Mall.



Architectural Area Light's 'Universe' medium, with 'Skirted Bell Hood' unifies the Ped Mall lighting with the larger downtown lighting framework.



Grapevine sphere lighting improves the sense of safety at the alleys.