



Glossary of Terms

Arterial Road – a high capacity urban road. The primary function of an arterial road is to deliver traffic from collector and local roads to freeways.

Auxiliary Lane – an extra lane constructed between on and off ramps which allows drivers a safe way to merge into traffic while also preventing bottlenecks caused by drivers attempting to enter or exit the freeway.

Bottleneck – section of road that experiences congestion at a specific point; it can be caused by curves, reduced number of lanes, merging traffic, or areas where the number of vehicles exceeds the capacity of the roadway.



Congestion along I-70 at the Jackson Curve

Environmental Impact Statement (EIS) – a document required by NEPA for certain actions “significantly affecting the quality of the human environment” that describes the positive and negative impacts of a proposed action.

First Tier EIS – covered a large corridor area and addressed overall corridor strategies that was divided into subsequent Second Tier environmental studies. The limits of this First Tier EIS were approximately 18 miles along I-70 just east of the Missouri/Kansas state line to east of the I-470 interchange.



Horizontal Curve

Geometrics – relates to the curves, hills, and valleys of a roadway. It also includes the number of lanes, median, and shoulders.

Improvement Alternative – a transportation alternative that addresses the needs along the I-70 corridor. These alternatives include roadway improvements, wider shoulders, interchange configuration improvements, interchange consolidations, etc.

Interchange Spacing – the distance between two grade-separated interchanges. Guidelines call for having them at least one mile apart within urban areas.

Kansas City Scout – a system used to monitor and respond to traffic incidents and provide roadway information to motorists in the metropolitan area. This is primarily done with changeable message boards that provide real-time information to the motorists along major facilities.



Changeable Message Board

Lane Balance – number of through lanes at an exit ramp is equal to the number of through lanes after the exit ramp.

Future of I-70



Glossary of Terms

Level-of-Service (LOS) – a qualitative measure of traffic operating on a roadway which takes into account number of vehicles compared to the capacity of the facility. Ratings range from A to F, where LOS A represents the best conditions and LOS E-F represents the worst.

Level-of-Service		
A 	Excellent Highest quality of service. Free flow conditions with minor traffic disruptions.	Free Flow Severe Congestion
B 	Good Traffic is stable and flows freely. The ability to maneuver in traffic is only slightly restricted.	
C 	Average Stable traffic flow. Freedom to maneuver is noticeably restricted.	
D 	Acceptable Speeds decline and density increases. Freedom to maneuver is severely limited.	
E 	Congested Vehicles are closely spaced with little room to maneuver. Travel demand approaching or at roadway capacity.	
F 	Severely Congested Very congested traffic with traffic jams. Travel demand exceeds roadway capacity.	

National Environmental Policy Act (NEPA) – a law that establishes requirements for evaluating and responding to environmental impacts of federal projects and projects using federal money or requiring federal action.

Operation Green Light – an ongoing study and associated projects to improve coordination of traffic signals on regional corridors which in turn could reduce the congestion at interchanges and the number of local trips on I-70.

Partial Access – one or more movements at an interchange is not available. For example, Truman Road access to I-70 is only available to and from the west.

Purpose and Need Statement – identifies the reasons that a proposed project is needed.

Record of Decision – Federal Highway Administration’s formal approval of a selected transportation improvement strategy.

Second Tier EIS – the focus of this study which evaluates the Selected Strategy for a 6.8 mile section along I-70 between The Paseo and Blue Ridge Cutoff interchanges.

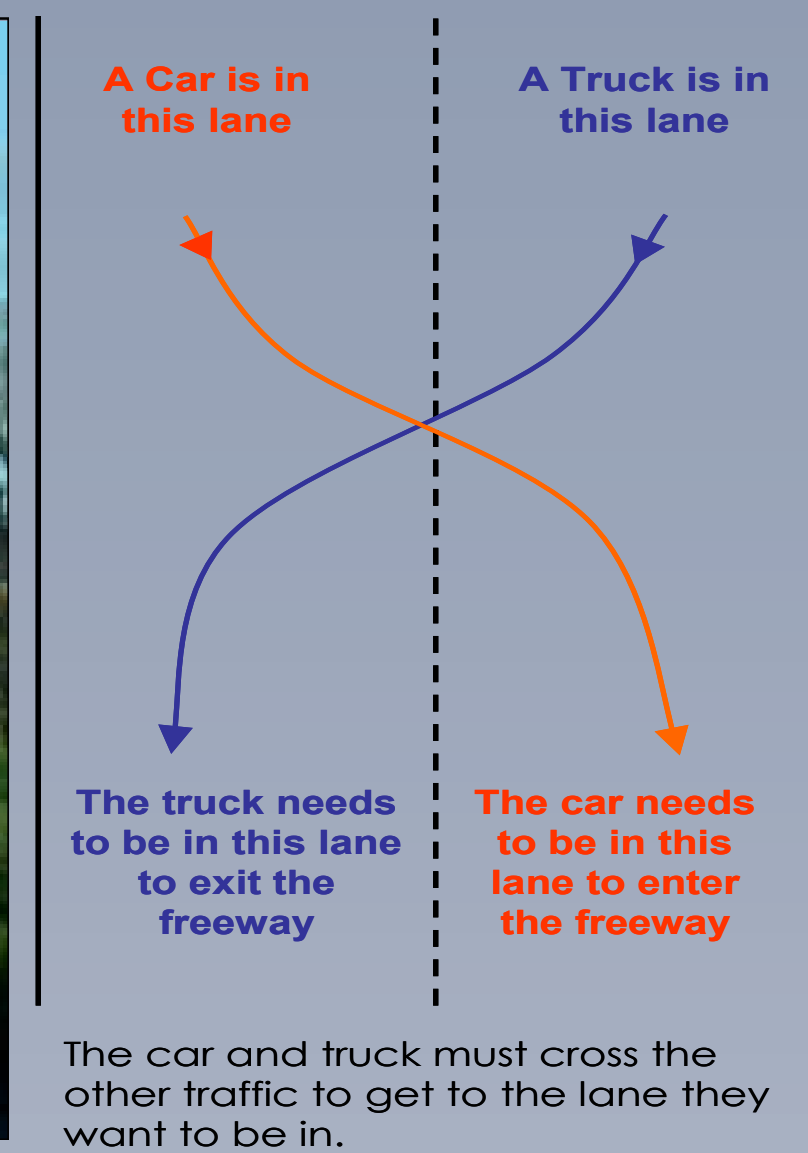
Section of Independent Utility (SIU) – a section of a larger project which can be implemented independently without constructing improvements to adjoining roadway sections.

Selected Strategy – result of the First Tier EIS which is to improve the key bottlenecks from The Paseo to Blue Ridge Cutoff interchanges.

Sight Distance – length of road ahead that is visible to the driver.

SmartMoves Regional Transit Vision – Kansas City’s regional plan which identifies public transit service in seven counties of the metropolitan area.

Weaving Section – where vehicles in different lanes need to cross each other to get to their desired lane.



Short Weave Areas

Future of I-70