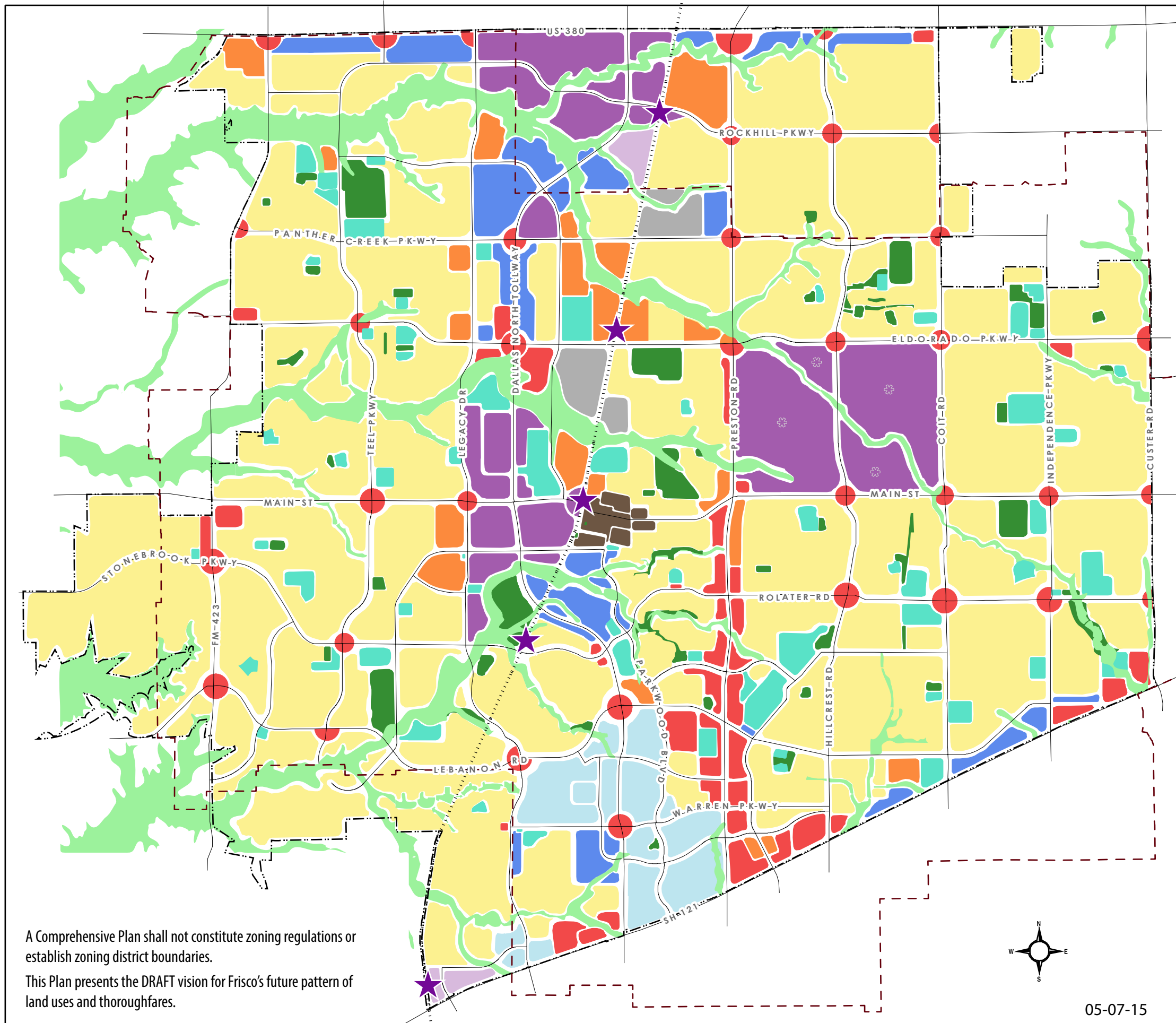




2015 Future Land Use Plan



Legend:

- Suburban Neighborhood
- Town Center
- Mixed-Use Neighborhood
- TOD
- Urban Center
- Suburban Regional Activity Center
- Commercial Node
- Business Park
- Industrial Park
- Public / Semi-Public
- Park
- Floodplain
- Future Rail Station
- Capped per Development Agreement
- Major Roads
- City
- FISD

A Comprehensive Plan shall not constitute zoning regulations or establish zoning district boundaries.

This Plan presents the DRAFT vision for Frisco's future pattern of land uses and thoroughfares.



05-07-15

NOTE: Public and Semi-Public uses include civic and institutional uses, such as schools, police and fire stations, libraries, etc. Areas shown are those known at the time of analysis for this update.

NOTE: Parks and open spaces are intended to be developed throughout the city, and may be part of any land use. Areas shown are those known at the time of analysis for this update.