

# **CANYON VIEW, ORCHARD & CASCADE NEIGHBORHOOD PLAN**

Open House #2 - Thursday, April 9, 2015

Orem City Council Chambers

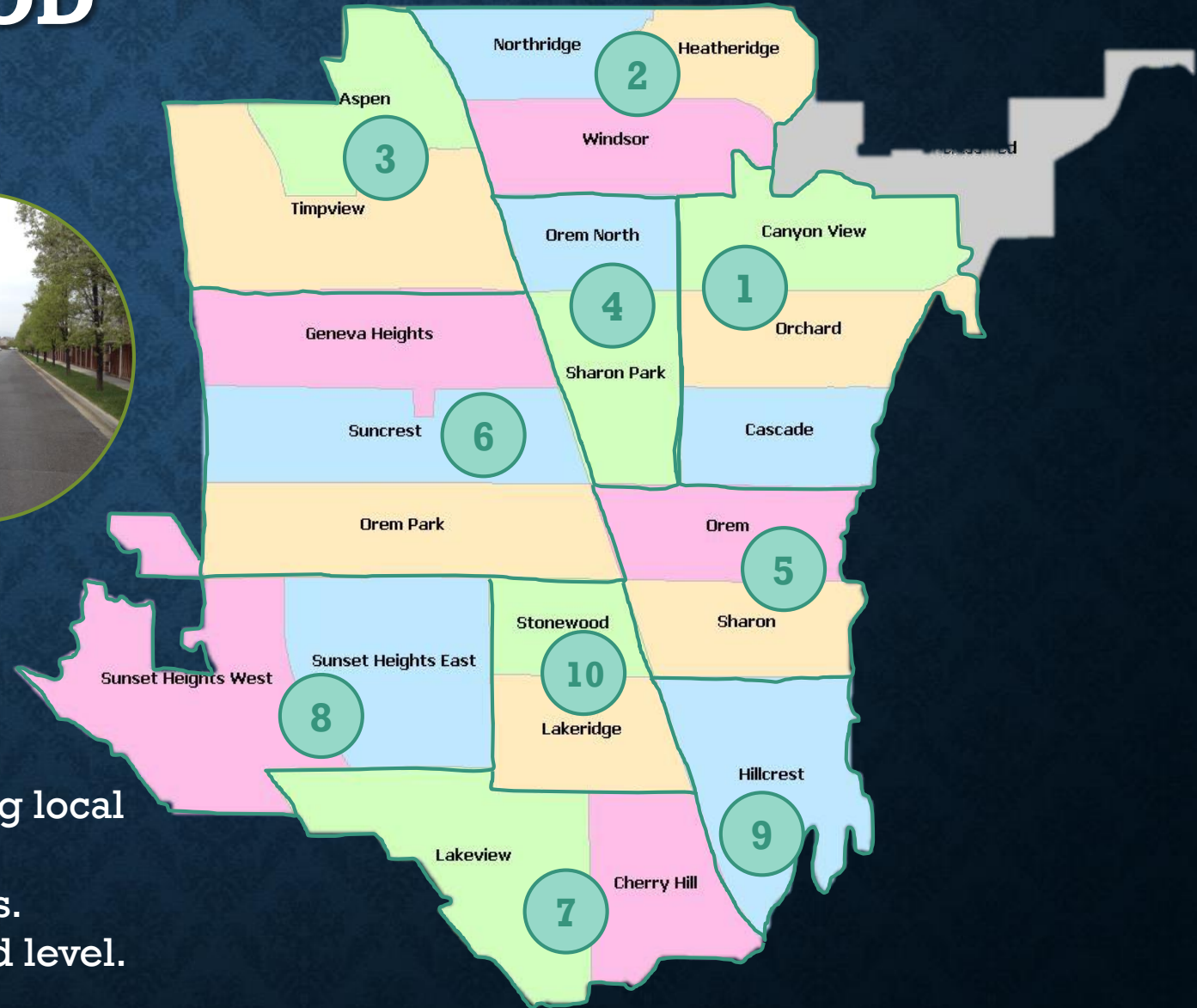


# OREM NEIGHBORHOOD PLANS PROGRAM



## PURPOSE

1. Support the City Council's Areas of Focus
2. Promote community planning by identifying local needs and concerns.
3. Improve City communication with residents.
4. Apply City-wide plans to the neighborhood level.





# PUBLIC OUTREACH

- Open House #1 January 2015: 120 people
- MindMixer: 137 surveys & ideas shared
- Advisory Committee Volunteers: 17

Neighborhood Plan: Canyon View, Orchard & Cascade Sidewalks

Posted Apr 6 19 Interactions 12 Days Remaining



How do you (or members of your household) use sidewalks around the Canyon View, Orchard, and Cascade neighborhoods?

Description

Topic Details

Help us understand pedestrian needs in your neighborhood. How do you use sidewalks? How can we improve the sidewalks in our neighborhoods? Are there places sidewalks are missing? Are there areas sidewalks are in disrepair or too small? Tell us in the comments!



To visit neighbors. 16

For recreation or exercise. 16

To get to shopping or recreational facilities. 5

10

12

Change Your Vote

To get to shopping or recreational





# NEIGHBORHOOD STRENGTHS

- Quiet streets with well maintained homes and yards.
- Close to schools, shopping, and city services.
- Access to open space, parks, and trails.
- Great neighbors and sense of community.





# NEIGHBORHOOD CONCERNS

- Neighborhood preservation, clean up, and beautification.
- Maintain low density nature of neighborhoods.
- Traffic congestion and speeds on neighborhood roads.
- Improving walkability and safety, particularly around schools and parks.
- Increase access to parks and trails while improving the quality of parks.
- Develop or beautify vacant lots throughout the neighborhoods.





# VISION STATEMENT

Enhance our quality of life by improving public safety and awareness; expanding transportation options through making streets safer for pedestrians, children, and bicyclists; increasing access to parks and open space; and making wise land use choices to consider future growth as we create homes that support the preservation and beautification of our neighborhoods.



# NEIGHBORHOOD PRESERVATION UNIT

- Sergeant Bill Crook
- Officer Travis Nye
- Officer Tanner Grow

<http://NPU.Orem.org/>

facebook

Email or Phone  Password

Keep me logged in  Forgot your password?

**Orem Neighborhood Preservation is on Facebook.**

To connect with Orem Neighborhood Preservation, sign up for Facebook today.

 **Orem Neighborhood Preservation**  
Community

Timeline About Likes Photos More ▾

PEOPLE

327 likes

ABOUT

- Orem Neighborhood Preservation Report Form → <http://goo.gl/eXGeVb>
- <http://goo.gl/eXGeVb>

UPCOMING EVENTS

 **OREM CITY POLICE AUCTION**  
Saturday, April 18, 2015 at 9:00am in MDT  
4 guests

 **Orem Neighborhood Preservation** shared a link.  
April 6 at 7:40pm · 



**Police seek man who robbed Orem bakery | KSL.com**  
Police are seeking the public's help in locating a man they say robbed a Orem



## Neighborhood Preservation Report Form

The City of Orem is committed to enforcing the codes that are essential to the peace, quality of life, health, and safety of the community. Enforcement of Orem City codes and ordinances ensures that the city remains safe, clean, and the property values are protected.

\* Required

**Name: \***

This information is for reporting purposes and is not released to the public.

**Email: \***

By providing an email address, we will be able to update you on progress of your report. This information is also confidential.

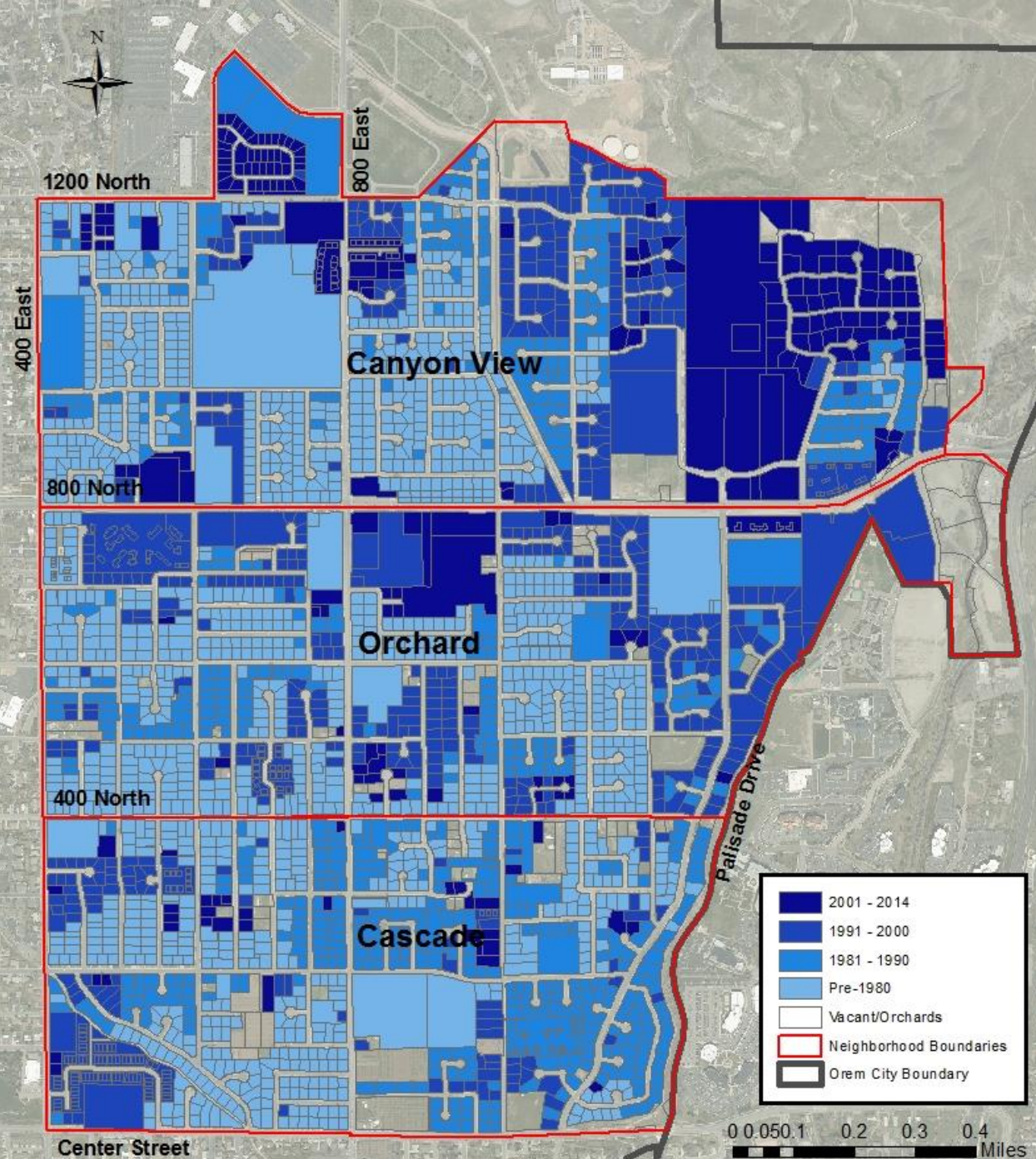
**Phone: \***

This information will allow NPU Officers to contact you, if you wish.



# DEVELOPMENT HISTORY

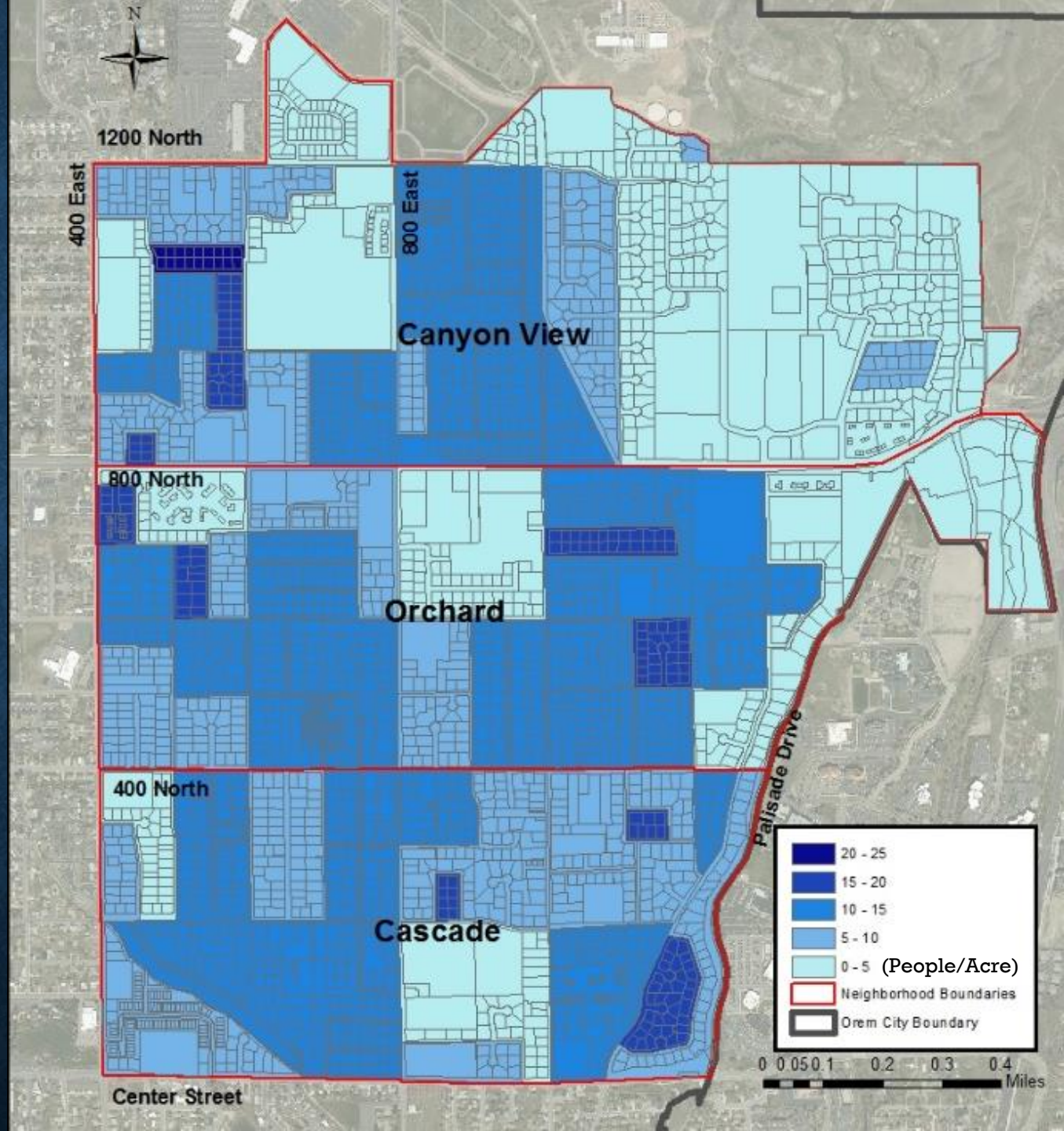
- Older development closer to city center
- Foothills areas continue to experience recent growth
- Infill development on remaining orchards and vacant lots





# POPULATION DENSITY

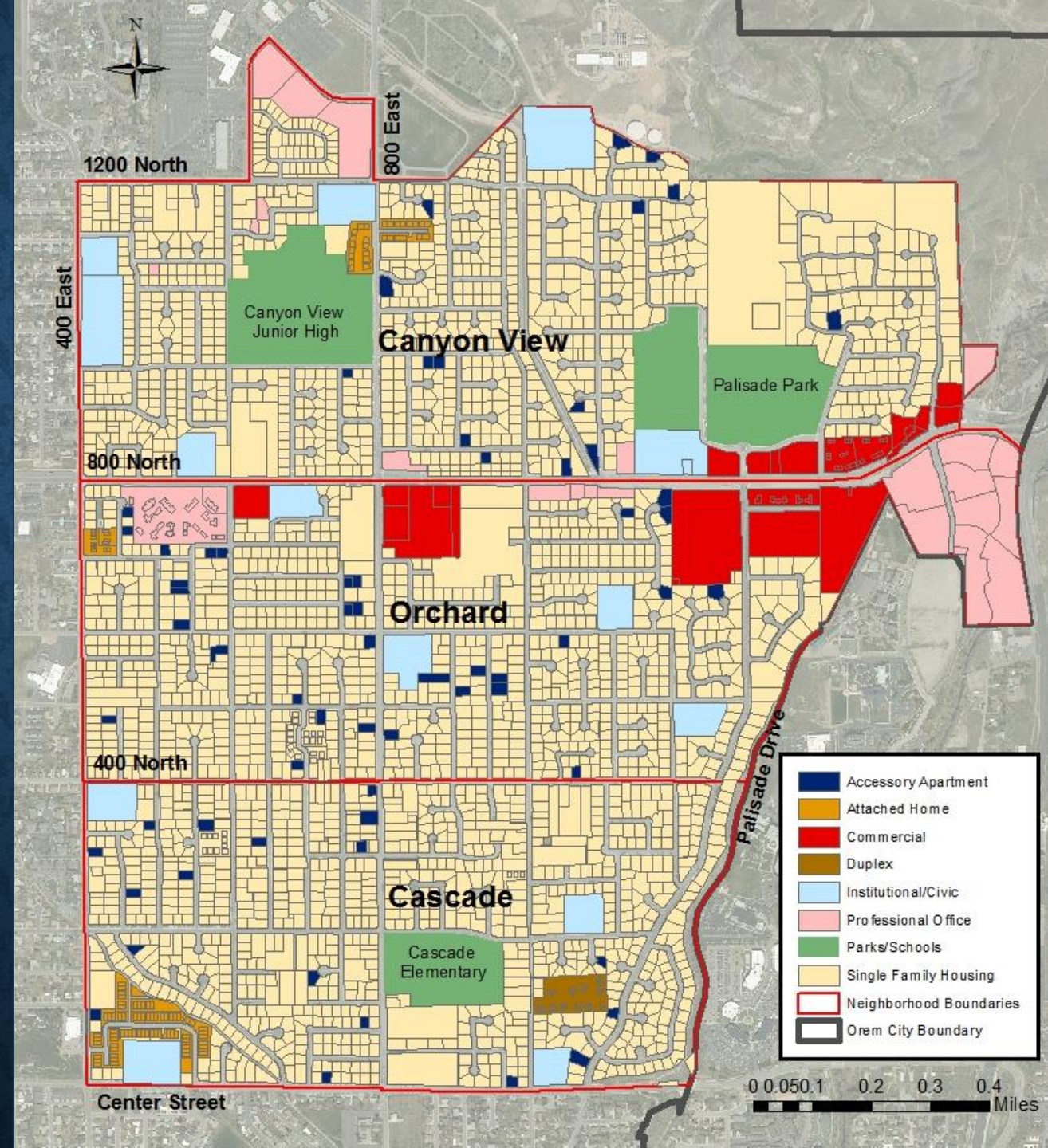
- Low population density on single family lots consistent with General Plan goals
- Schools and parks keep densities lower in neighborhoods





# LAND USE

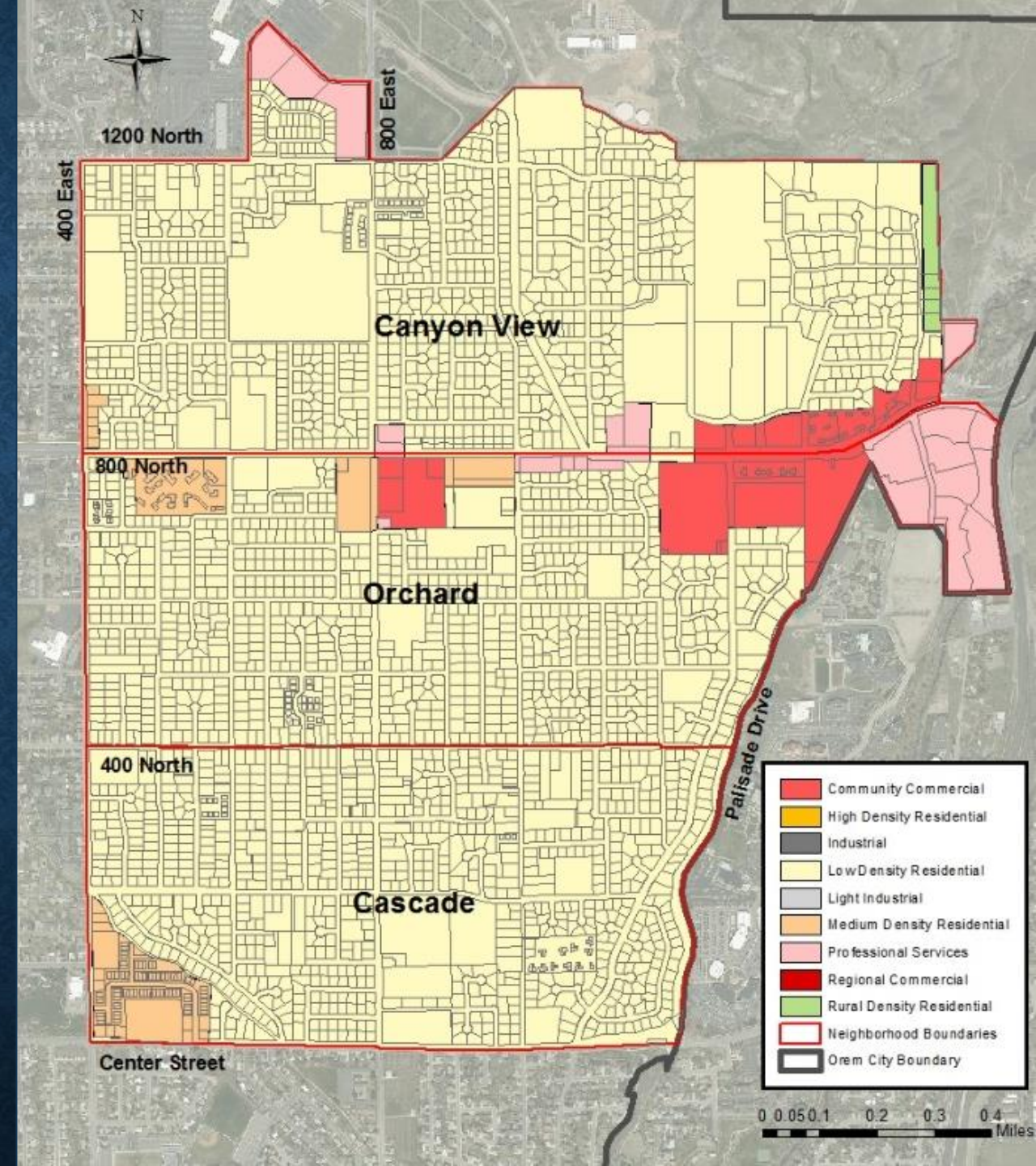
- Existing Conditions:
  - Largely Single Family Housing
  - Commercial/Office uses on 800 North
  - Parks built adjacent to schools
- Future Considerations:
  - Infill development on vacant lots and orchards
  - Balance access to open space and parks
  - Increased density through attached homes and accessory apartments
  - Development of churches on existing lots





# GENERAL PLAN

- Plans for predominately single family housing
- Designates 800 North corridor for retail and office uses





# TRANSPORTATION CONCERNS

- Speed limits on connector roads
- Intersection improvements in neighborhoods
- Improved bike facilities on roads
- Reduced congestion on 1200 N & 1600 N to the business park
- Traffic concerns on 800 East near schools (Canyon View J.H.S., Orchard & Cascade Elementary Schools)
- Parking at schools, parks, and trailheads





# NEIGHBORHOOD TRAFFIC CALMING TOOLS

- Reduce speeds on local roads while preserving traffic flow
- Enhance pedestrian and bicycle safety
- Improve crossings near schools



Bulb-out Crossings



Roundabouts



Raised Crosswalks

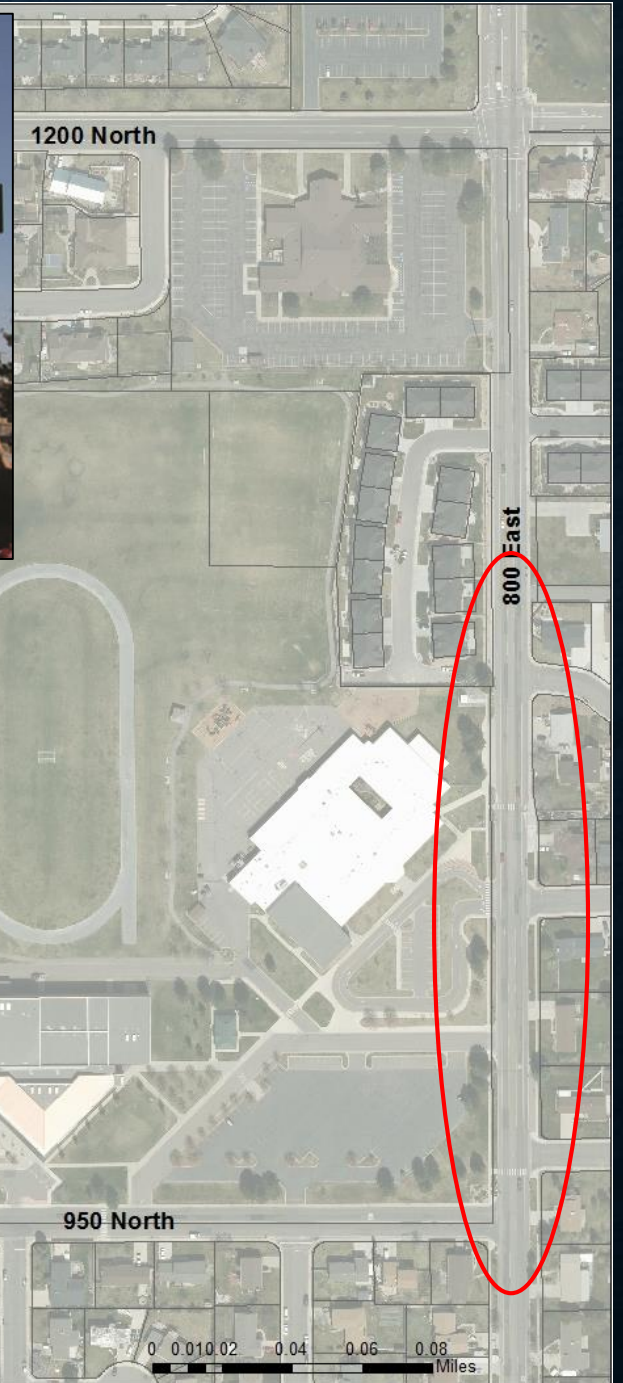


Island Medians



# HAWK SIGNALS

- Orem City working with Alpine School District to place HAWK signal on 800 East;
- Funding already secured;
- Promote safety during school times while preserving traffic capacity





# TRANSPORTATION PLANS

**OREM** TRANSPORTATION MASTER PLAN

HOME    FAQ    ROADWAY/TRAFFIC/SIGNALS    TRANSIT AND PARKING    BIKE & PEDESTRIAN ROUTES

## Purpose

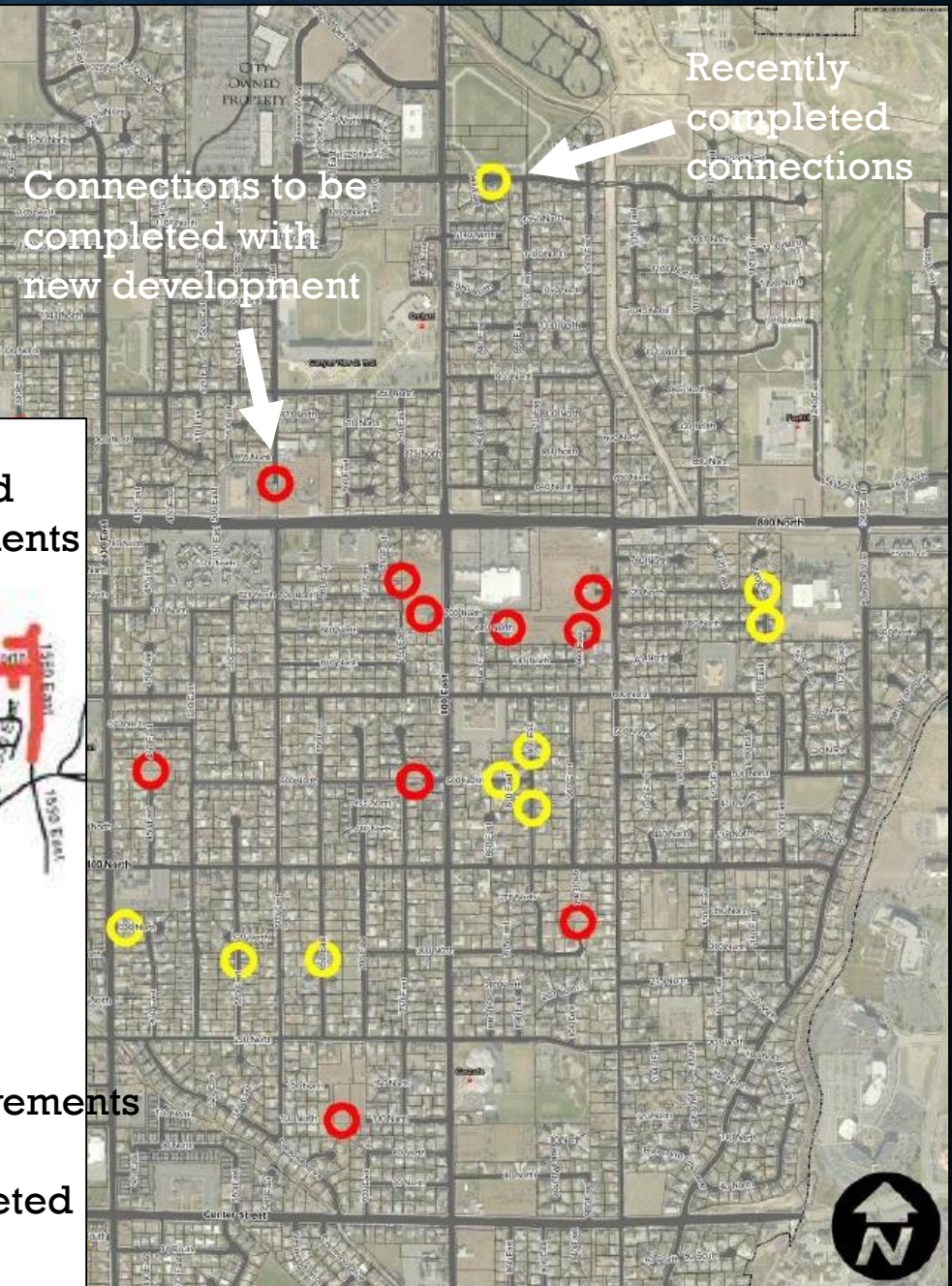
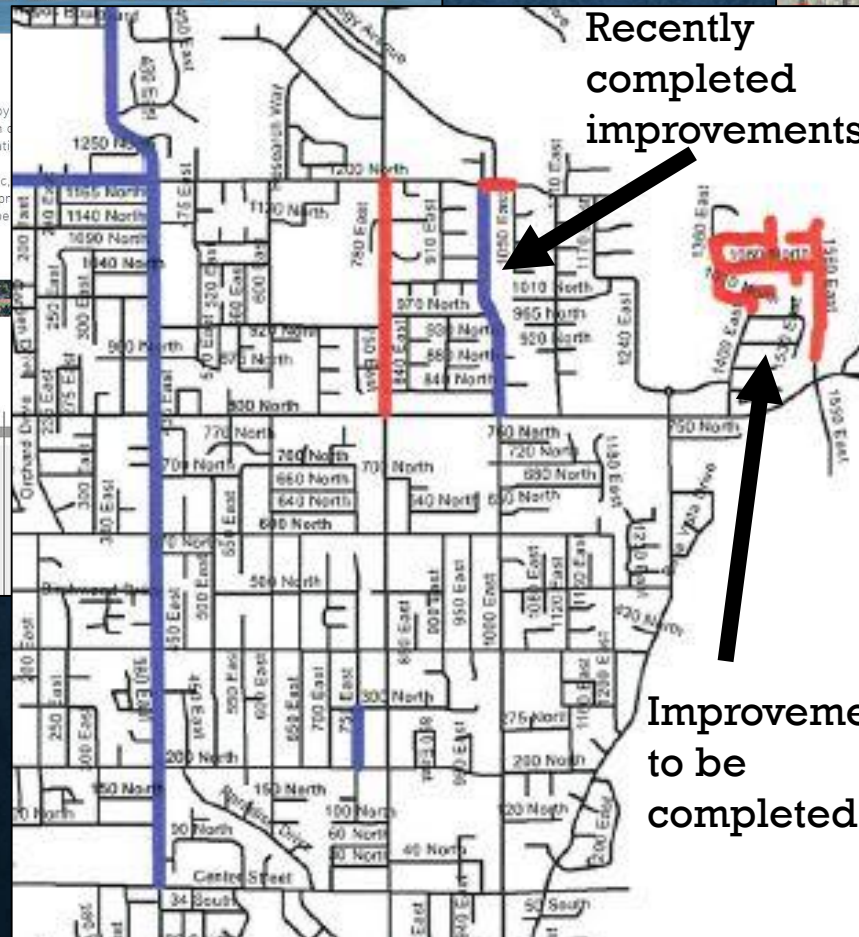
The population of Orem City will grow from 89,000 in the 2010 Census to 112,300 by 2030. With this continuous growth comes the need to plan, design, construct, and maintain a wide transportation master planning process to define existing and future transportation needs.

The City would like the public to comment on where conditions for roadway, traffic, routes, and safety can be improved or new projects implemented. As the planning process progresses, significant projects for public comment. Your comments are important and will be documented. *\*Numbers from the MAG 2013 Municipal Population Projections*

## Schedule



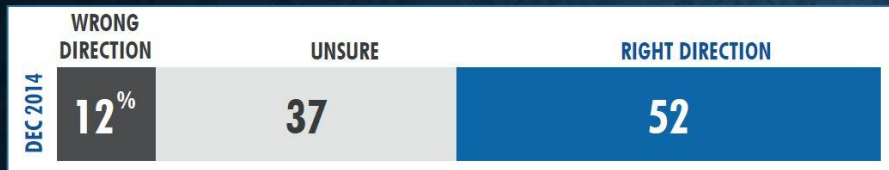
[www.OremTMP.com](http://www.OremTMP.com)



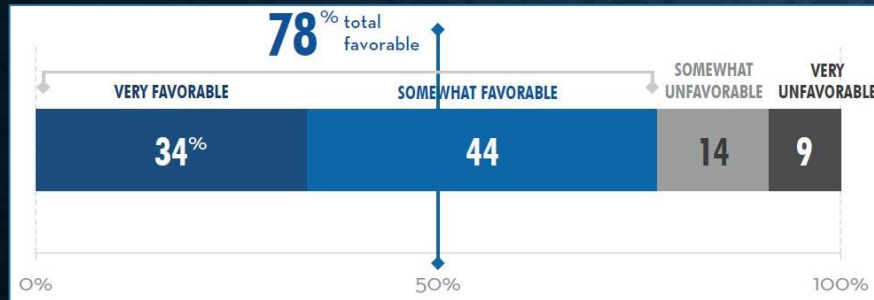


# PARKS & RECREATION FACILITIES: 2014 CARE TAX SURVEY

1

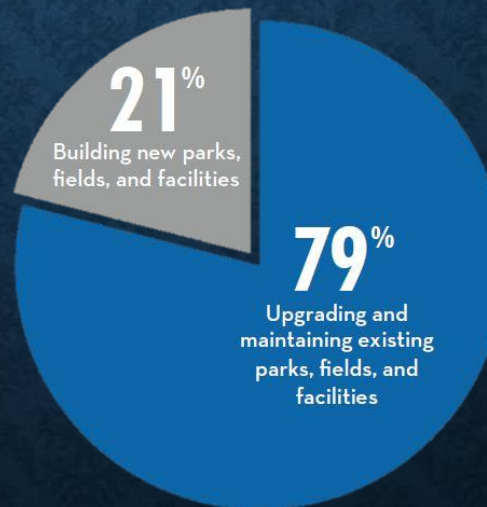


2



1. Orem moving in the right direction;
2. Residents approve of the CARE tax;
3. Preference for upgrades vs new facilities;
4. CARE money should be used to improve playgrounds, fitness centers, and bike lanes;
5. If new projects, Invest in small projects

3



4



5



# POCKET PARKS

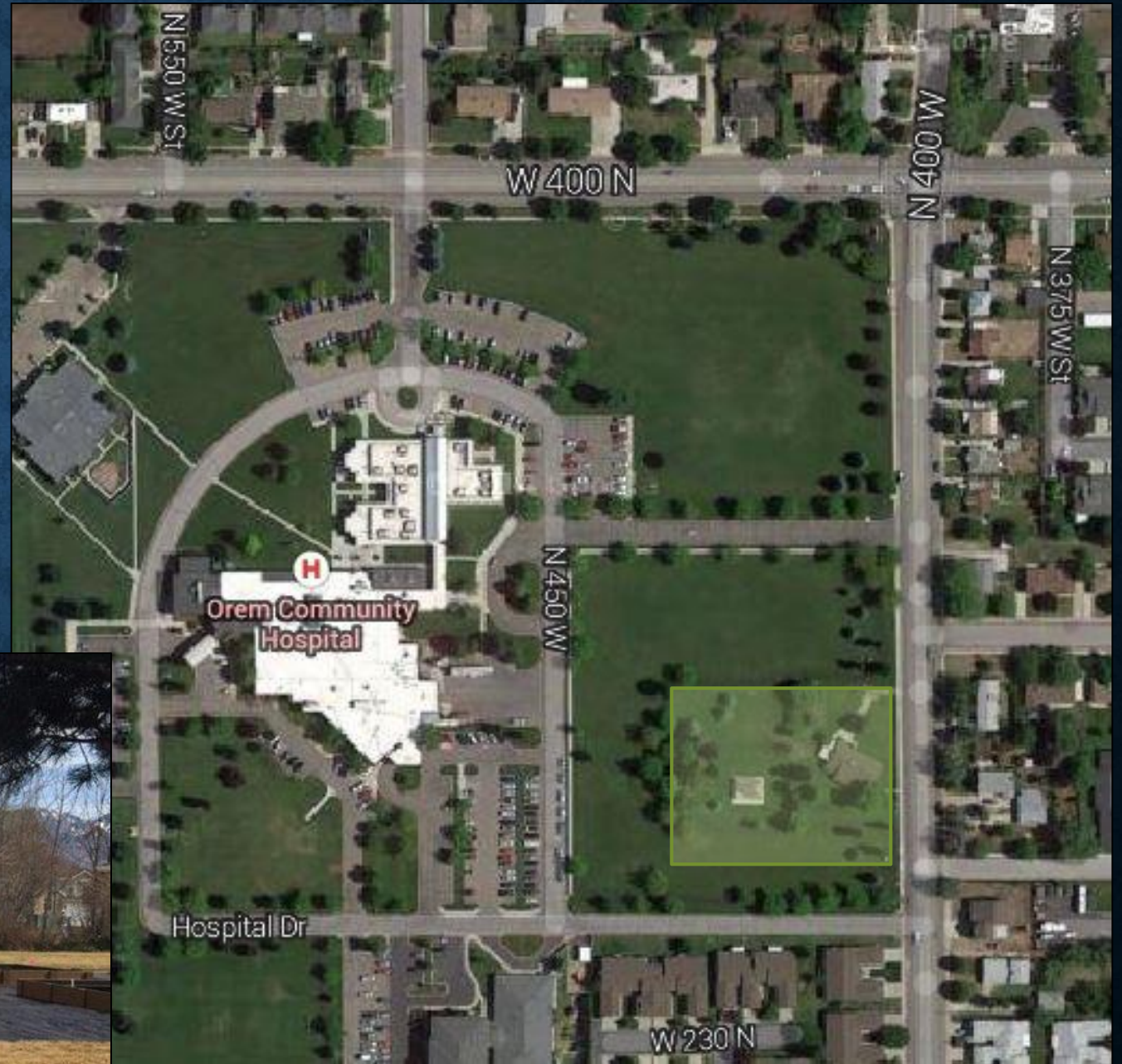
Good opportunities for small developments in neighborhoods because of lack of space for new large facilities.





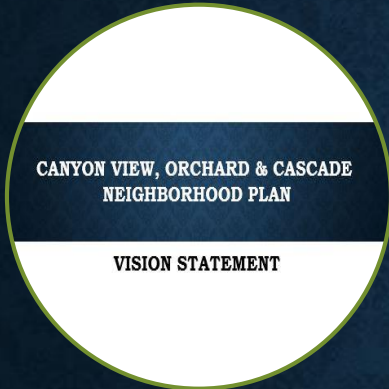
# COMMUNITY GARDENS

- Many residents would like to see one in their neighborhood;
- City does not have funds to support/organize facility;
- IHC Garden Open House May 15, 2015;
- Hospital-operated with volunteers





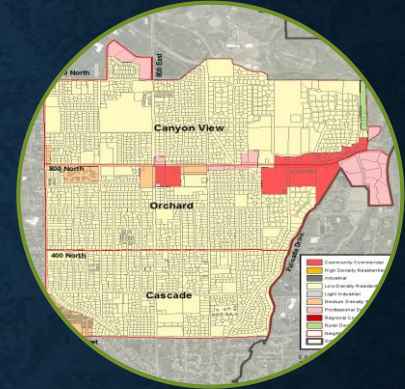
# QUESTIONS & WORK STATIONS



Vision Statement



Issue Identification



800 North Corridor



Historic Preservation



Beautification &  
Neighborhood Preservation



Urban Design