

From the Linear Park to the Central Park



1

From the Linear Park to the Central Park Overview



The New Central Park

The big idea is to expand the Central Park into the linear park as it was conceived by Frederick Law Olmstead Jr. in 1908. The aggregation of spaces in the new park add to a complete place, this is achieved by moving some pieces and by implementing the following key transformative concepts:



- No Habitable Buildings in Hazardous Areas
- One Integrated Park
- New Street Car Line
- Balanced Mix of Land Uses
- Improved Farmers' Market
- Integrated Transportation
- Sculpture Park
- Historic Continuity
- Improved Band Shell Area
- Amended High Hazard Area
- Replace lost uses and parking



Location: _____

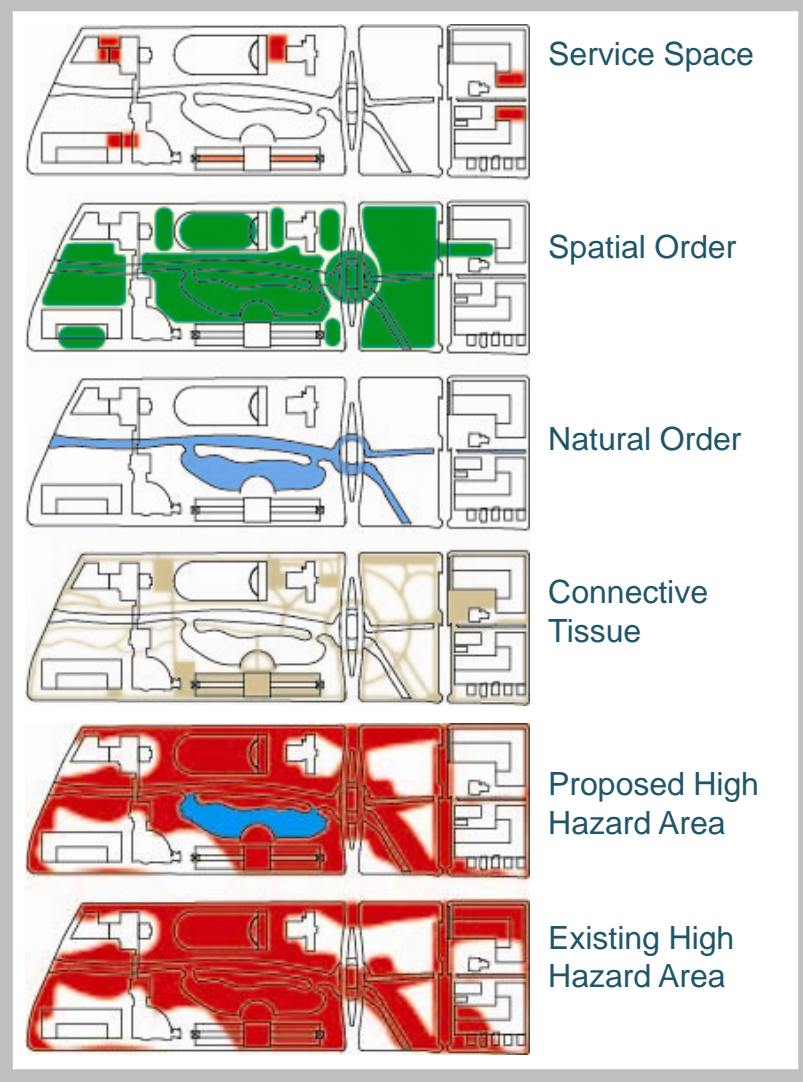
Submission No: _____ (Organizer Use Only)





2

From the Linear Park to the Central Park Approach



There are two key pieces to the approach: 1) an organizing concept that looks comprehensively at space, service areas, the natural setting and connectivity, and 2) an engineering principle to substantiate reclaiming land from the high hazard area.

- Service Space are the areas for deliveries and maintenance
- Spatial Order are the spaces that organize
- The nature al order organizes landscape
- Connective tissue is the pedestrian realm
- The high hazard area is amended to better manage floods and increase developable land



Location: _____

Submission No: _____ (Organizer Use Only)





3

From the Linear Park to the Central Park



A Place where People Want to Be

The Central Park is a multi-use urban and civic facility

- New streetcar and maintenance facility
- Net gain in all land uses
- Net gain in parking
- Historic buildings preserved
- Civic uses are consolidated
- Increased residential area
- Flood control improvements
- Fitting building masses
- Better connectivity

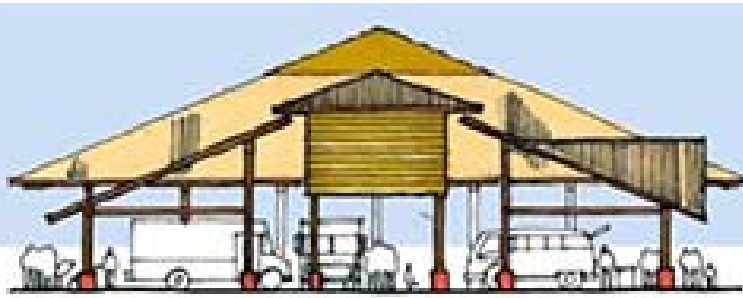
New Image

- Signature Bridge
- Sculpture Garden
- Improved band shell
- New farmers' market
- New 1.4 acre pond
- Expanded park land
- Increased riparian land



4

Required Principle: The Civic Heart of Boulder From the Linear Park to the Central Park



A Civic Heart is a Muscle Where...

- People live
- People work
- People interact
- People play
- People make music
- People go places
- People read
- People listen
- People eat
- People see art
- People make art
- People buy and sell

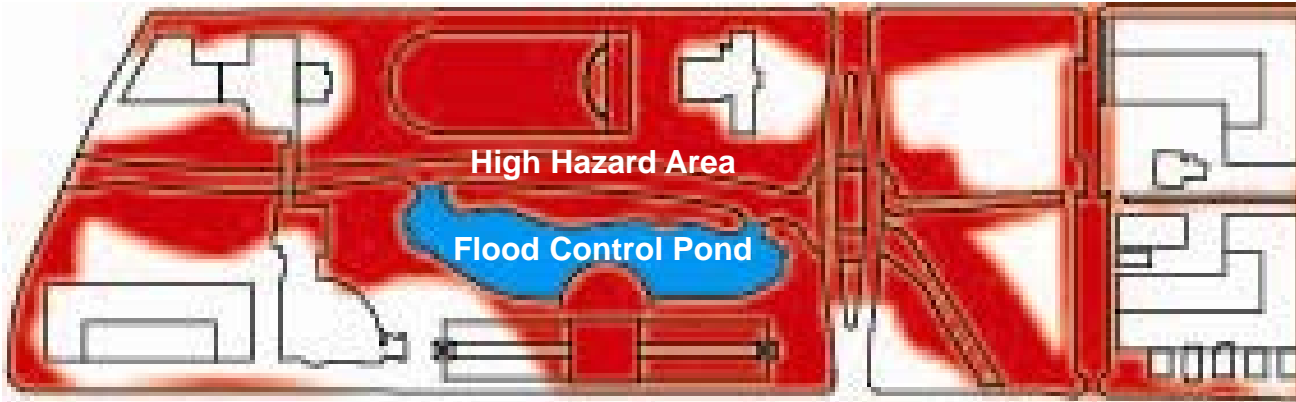


Submission No: _____ (Organizer Use Only)

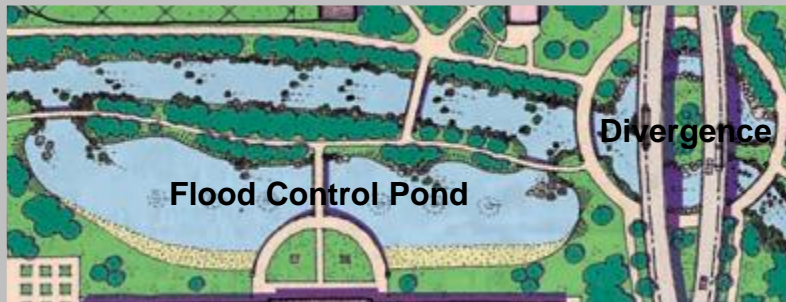


5

Required Principle: Life and Property Safety From the Linear Park to the Central Park



- A Flood control pond attenuates potential floods
- Amended high hazard area boundary will increase developable land



- The pond increases potential volume
- The re-engineered divergence helps control floods

Riparian Lands Expand

- Habitable buildings are removed from the hazard area
- Riparian lands are expanded to absorb potential floods
- The Farmer's Ditch divergence manages potential floods
- Boulder Creek bed is expanded to a natural configuration

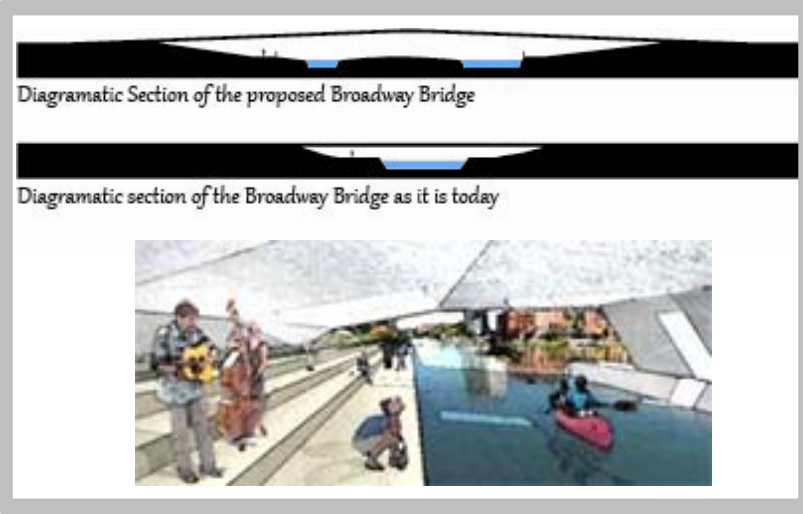


Submission No: _____ (Organizer Use Only)



6

Principle of Choice 1: Outdoor Culture and Nature From the Linear Park to the Central Park



- ### Integrating Nature and Culture
- Improved band shell
 - New sculpture garden
 - Increased pedestrian and bike paths
 - Maintain existing pedestrian bridges
 - Preserve 13th St.
 - Increased water front
 - Improved divergence place under the new bridge
 - Gain parkland at the Arapahoe/Broadway corner



Submission No: _____ (Organizer Use Only)





7

2: Celebration of History and Existing Assets From the Linear Park to the Central Park



Maximizing Historic Assets

- The Yocum Building is moved next to the BMoCA
- The Atrium Building Roof is re-purposed for the farmers' market
- The Glenn Huntington Band Shell is relocated
- The Denver & Rio Grand Western caboose remains
- Historic buildings on Arapahoe are protected



Submission No: _____ (Organizer Use Only)





8

Choice 3: Enhanced Access and Connections From the Linear Park to the Central Park



Multi-modal Connections

- Enhanced pedestrian and bicycle paths
- New street car will decrease parking need
- Replace parking 1 to 1
- Tighter land use requires less mobility
- Increased residential in downtown provides better access to Civic Center



Submission No: _____ (Organizer Use Only)



10

A Place for New Community Activity and Arts From the Linear Park to the Central Park



Art Makes Sense in a 24-hour Place

- The BMoCA complex increases in size with the Yocum Building
- 13th Street remains a cultural activity area
- Sculpture park is a permanent display
- The band shell increases capacity by four times



Submission No: _____ (Organizer Use Only)

