

Climate Action Plan

For

Western Riverside County



Western Riverside Council of Governments
4080 Lemon Street, 3rd Floor MS 1032
Riverside, CA 92501
(951) 955-7985

www.wrcog.cog.ca.us

Why Prepare a Climate Action Plan?

- Comply with state regulations and guidelines
- Provide a framework for many things we already do
 - land use
 - transportation
 - utility infrastructure
 - environmental stewardship
 - healthy lifestyles
- State law does not *require* a local agency to prepare a CAP, but does *incentivize* it

WRCOG's
Sustainability Framework Plan



A Climate Action Plan

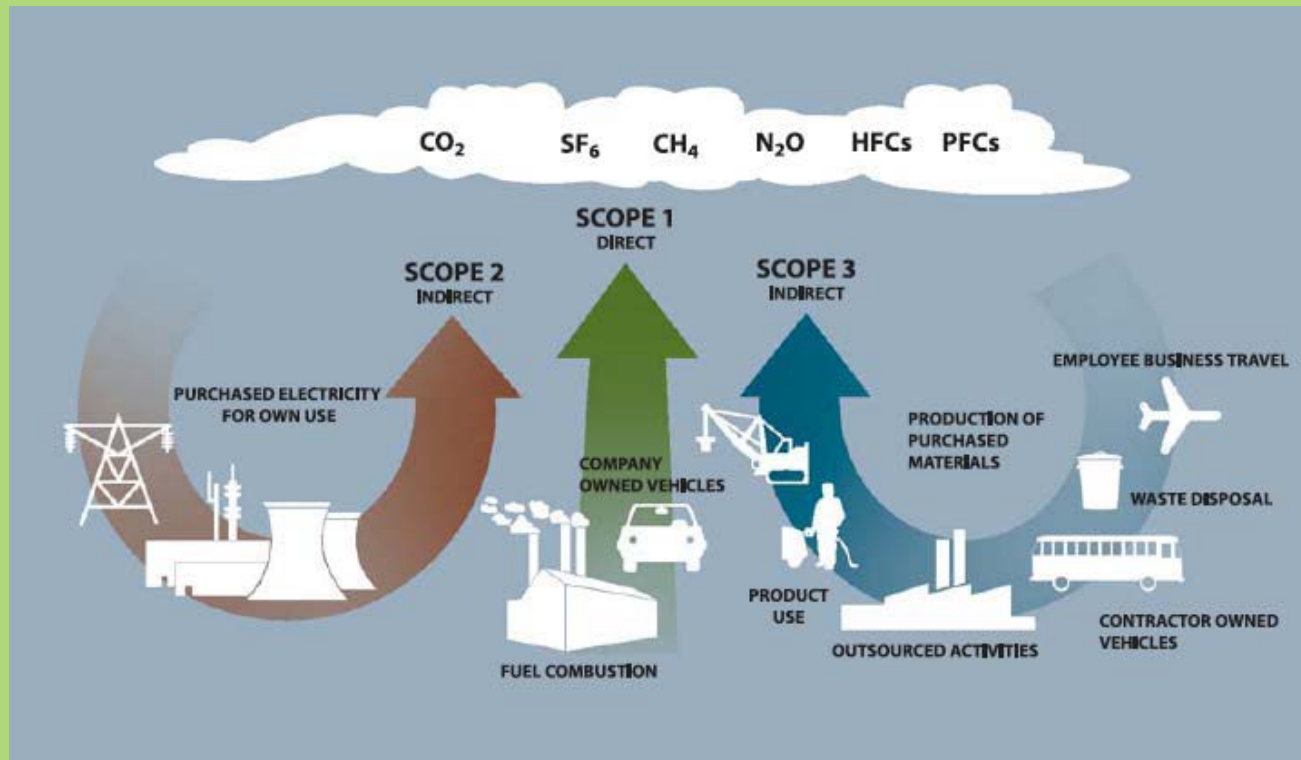
does NOT:

- Impose mandatory new requirements on existing homeowners and businesses
- Replace WRCOG/SCAG's SB 375 obligations
- Replace existing development regulations or policies affecting new development



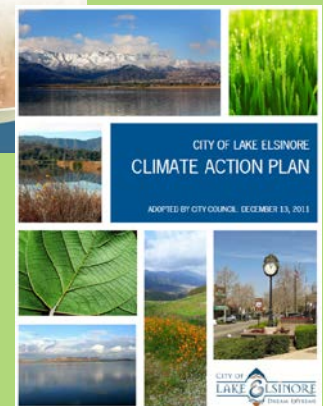
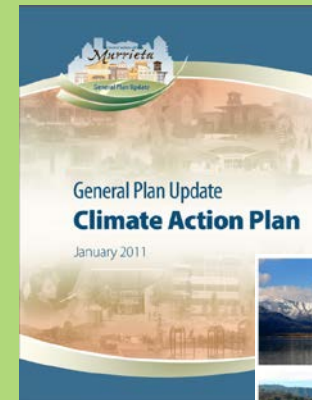
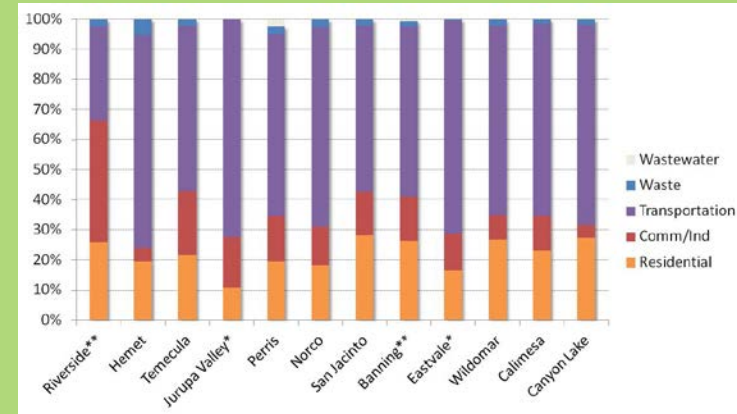
Greenhouse Gases as a Sustainability Metric

- Comply with state regulations and guidelines
- Easily measured and tracked
- Links to energy use and costs



Progress in Western Riverside County

- **Climate Action Plans:**
 - Corona, Lake Elsinore, Murrieta, Temecula, County of Riverside
- **Sustainability or Energy Action Plans:**
 - Riverside, Moreno Valley, Temecula
- **General Plan Updates:**
 - Calimesa, Canyon Lake, Hemet, Menifee, Murrieta
- **WRELP Energy Action Plans**
 - 11 jurisdictions participating

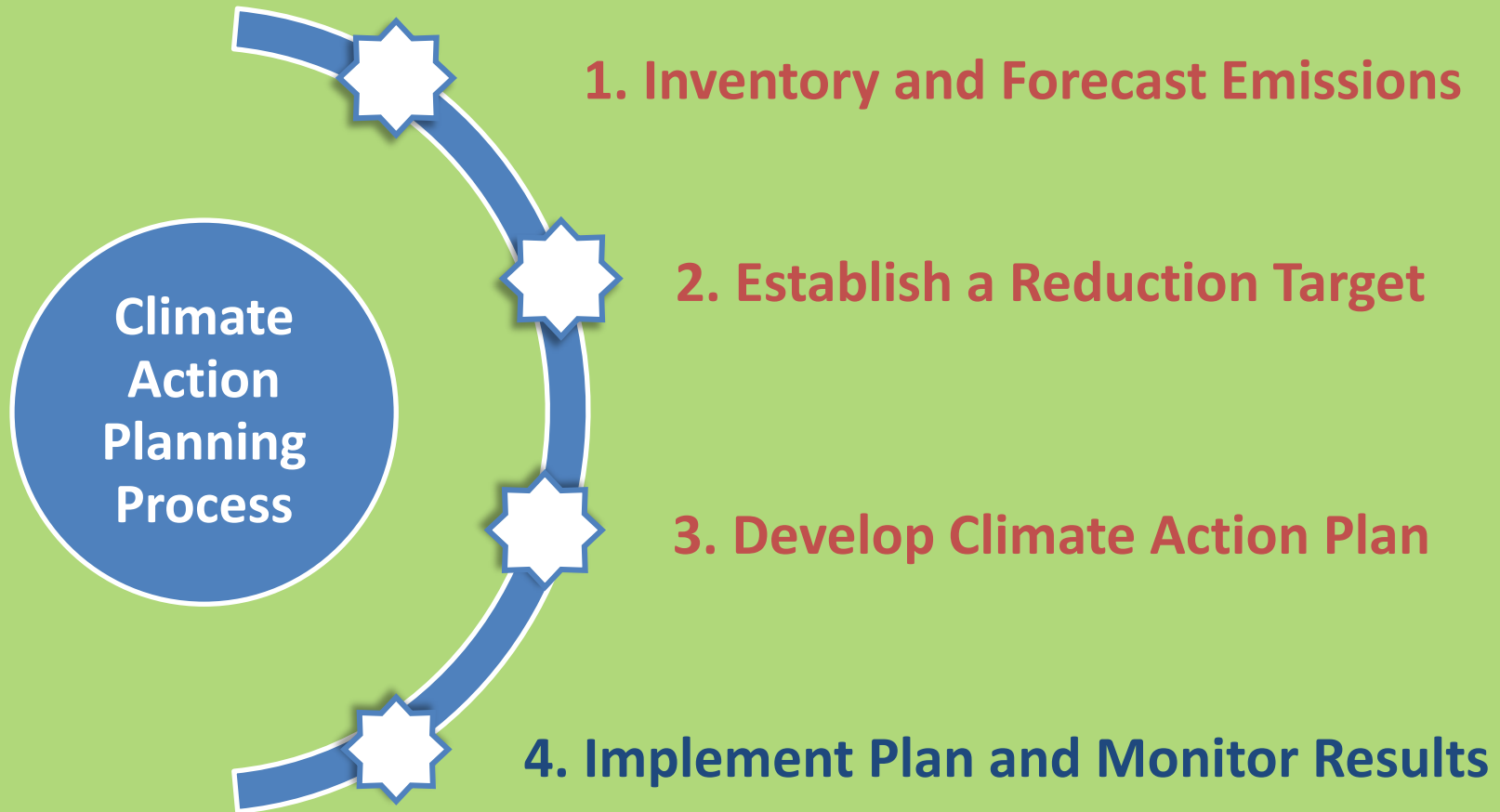


Subregional Climate Action Plan

Project Objectives

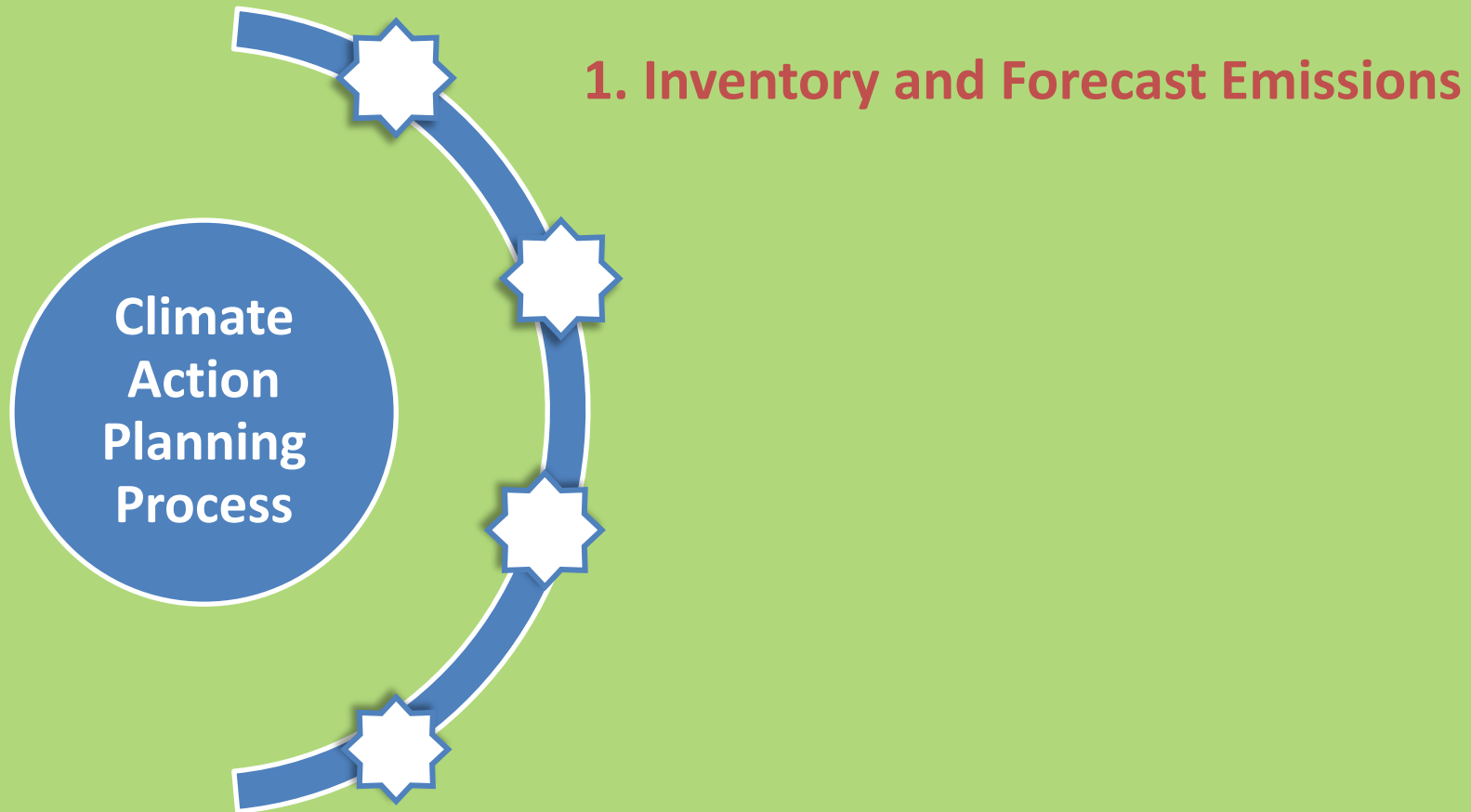
- Fulfill SGC planning grant for a subregional CAP
- Develop emissions inventory, projections, and reduction targets
- Propose broad reduction measures that can be uniformly applied or tailored to jurisdictions
- Engage key stakeholders using WRCOG structure
- Leverage existing ICLEI tools and resources
- Serve as a model for others throughout California
- Preserve ability to streamline future projects

Subregional Climate Action Plan Process



Subregional Climate Action Plan

Process



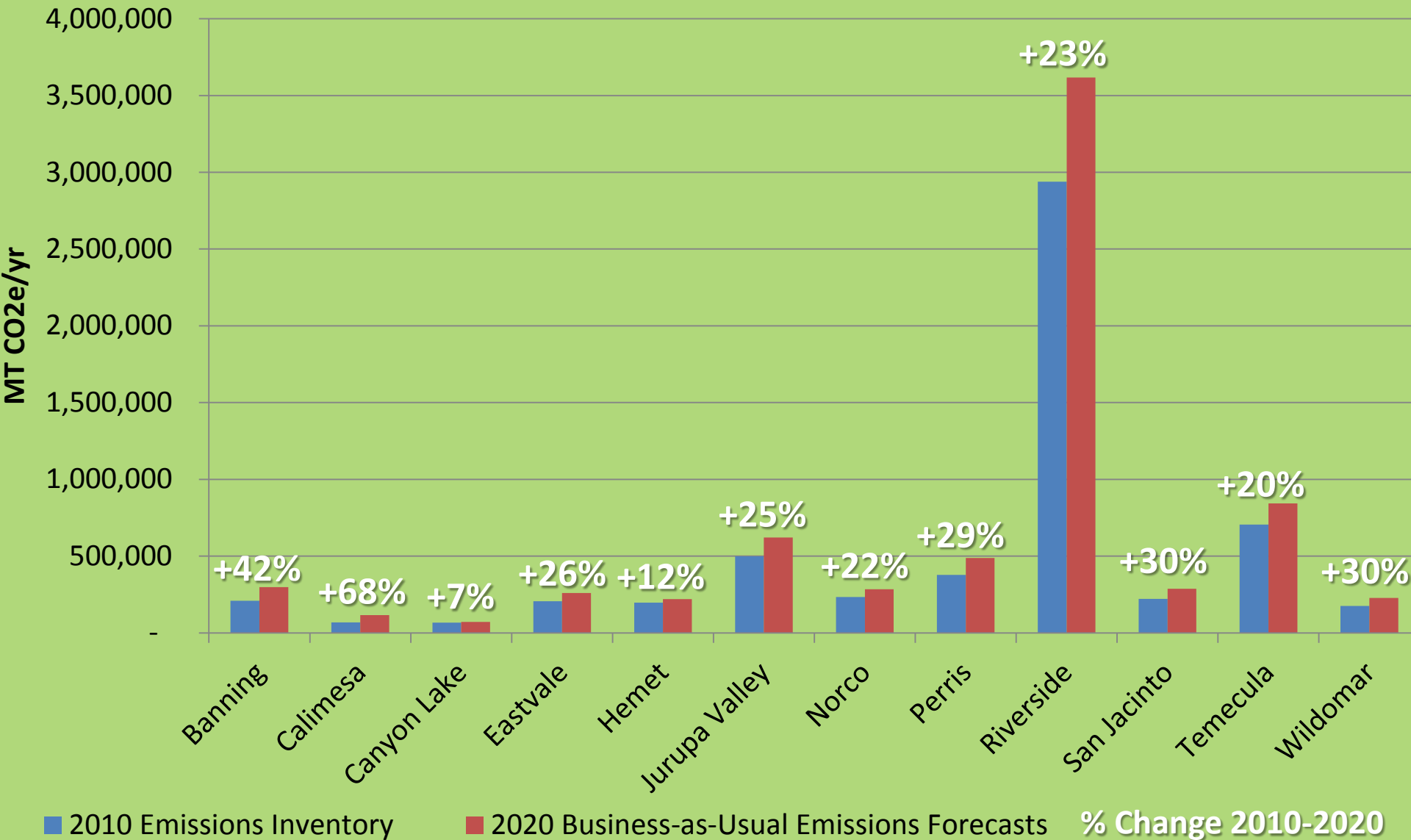
Emissions Inventory and Forecasts

Quick Facts

- 12 inventory cities

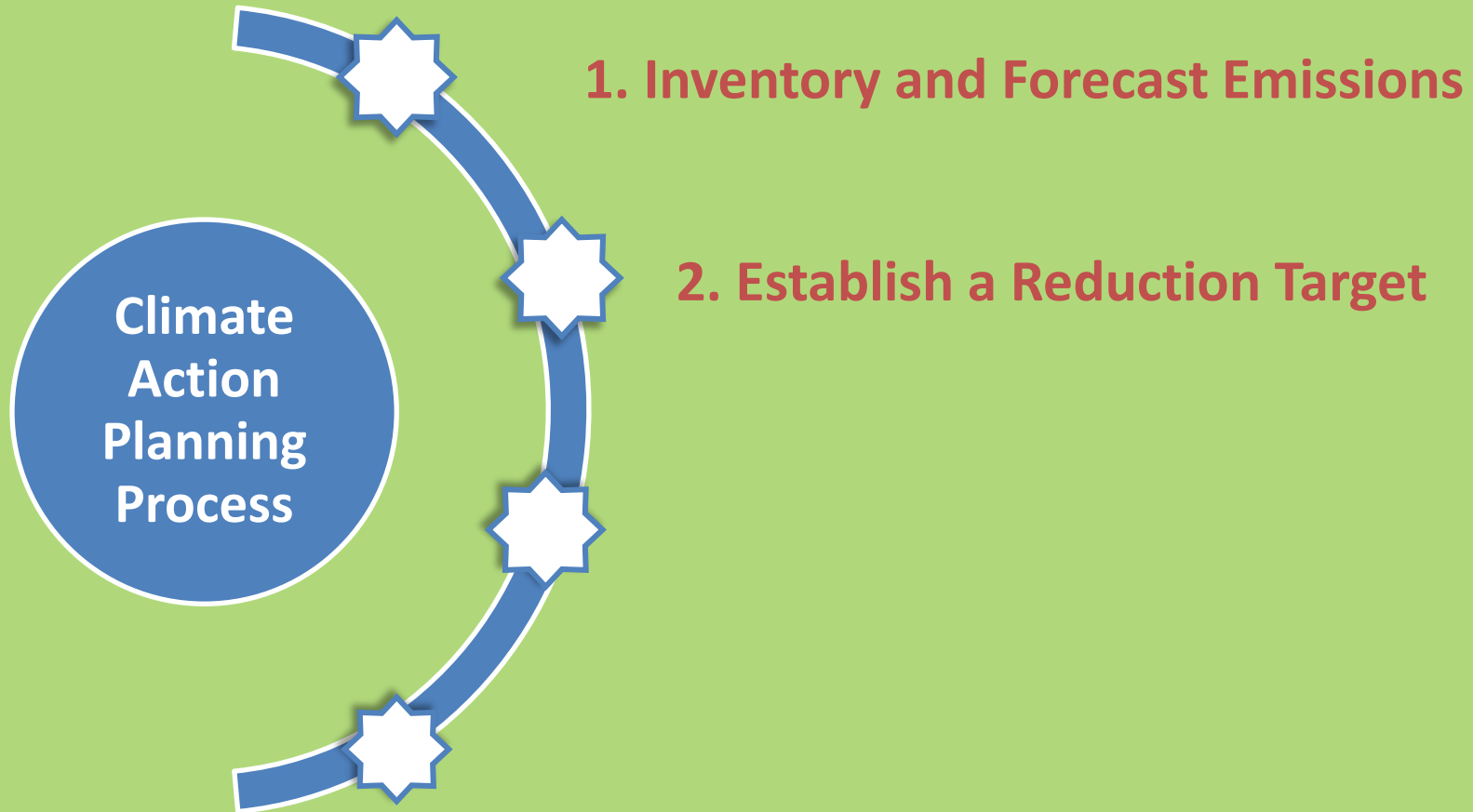
	~2010	2020
Subregional emissions (MTCO ₂ e/yr)	5,901,979	7,340,867
% Increase from baseline	--	+24%

2010 and 2020 Emissions



Subregional Climate Action Plan

Process



Setting Subregional Emissions Reduction Targets

- Corona, Lake Elsinore, Moreno Valley, Murrieta, Riverside County have established targets
 - Most have 15% below “current” emissions levels by 2020
- WRELP jurisdictions have established energy use reduction targets in community EAPs
 - Most are 15% energy use reductions by 2020
- Remaining jurisdictions will establish targets as part of the subregional CAP
 - Intent is for the *subregion* to achieve 15% by 2020
 - Some jurisdictions may go beyond

Approaches to Setting Emissions Reduction Targets

- 1990 levels by 2020
 - Difficult to measure without reliable data
- 15% below “current” emissions
 - Advocated in 2008 AB 32 Scoping Plan and SCAQMD, BAAQMD guidance documents
- Meet service population (housing+jobs) thresholds
 - SCAQMD working group has identified two targets (concepts, not adopted standards)
 - 6.6 MTCO₂e/SP/yr for 2020
 - 4.1 MTCO₂e/SP/yr for 2035
 - Not commonly supported or used
 - Does not reduce mass emissions in high-growth communities

Subregional Emissions

Reduction Targets

- Align with AB 32 (2020) and SB 375 (2035)
- Subregional reduction *targets*:
 - 15% below current (~2010) emissions by 2020
 - 49% below current (~2010) emissions by 2035



Emissions Reduction Targets

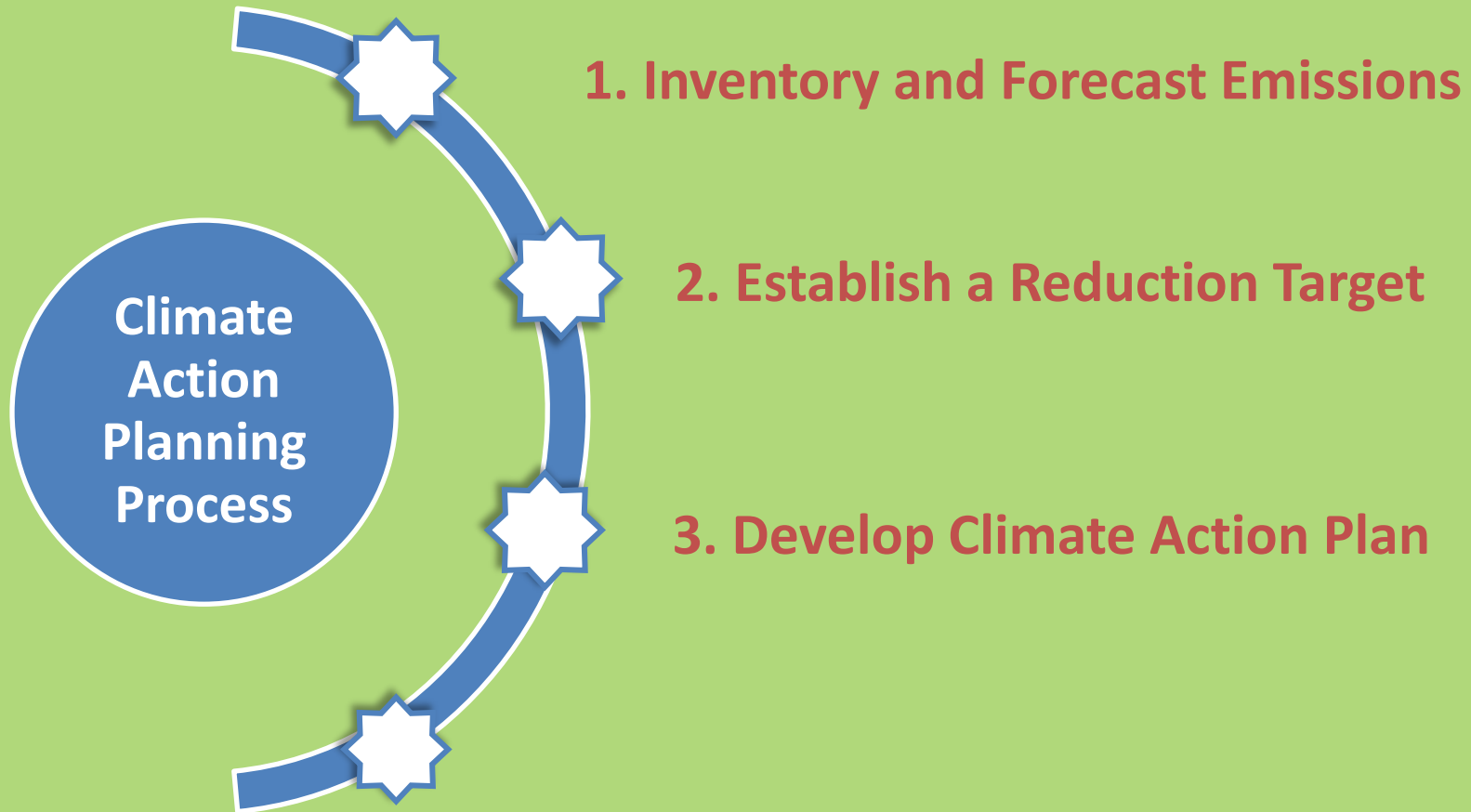
Quick Facts

- 12 inventory cities

	~2010	2020
Subregional emissions (MTCO ₂ e/yr)	5,901,979	7,340,867
% Increase from baseline	--	+24%
Recommended reduction target (below ~2010 baseline)	--	-15%
Target emissions level (MTCO ₂ e/yr)	--	5,016,682
Emissions reductions needed (MTCO ₂ e/yr)	--	-2,324,185
Relative to forecast	--	-32%

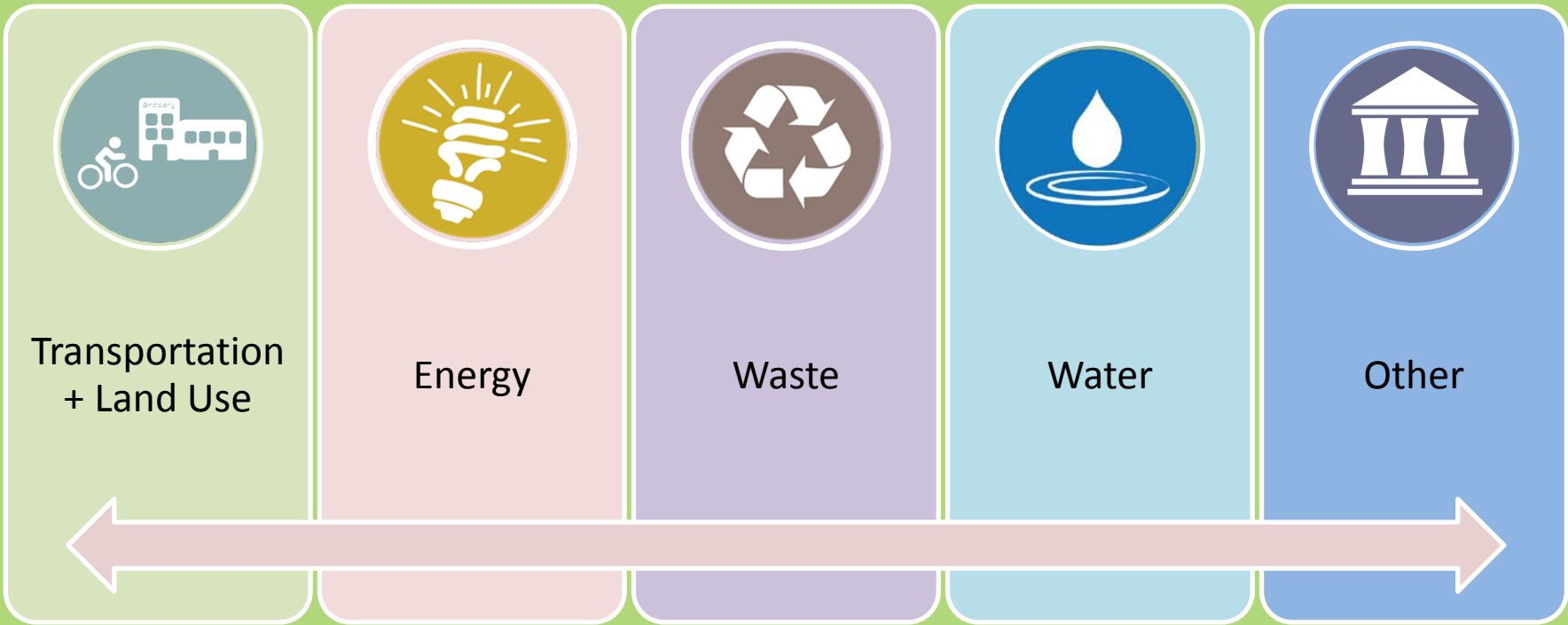
Subregional Climate Action Plan

Process



Developing Emissions

Reduction Measures



State measures | Regional measures | Local measures

Implementation Levels

Silver, Gold, or Platinum

- **Silver** levels encourage users to implement measures, without mandatory requirements
 - Ideal for cost-beneficial measures (e.g., lighting retrofits) or as demonstration projects
- **Gold** levels include some requirements, but are less costly to both the jurisdiction and user
 - Requires a step beyond the Silver requirement (e.g., retrofitting a building after a required energy audit)
 - Ensures some level of politically feasible GHG reductions
 - Can be a first-step to future, more stringent requirements
- **Platinum** levels rely on mandatory requirements to achieve certain reductions
 - Useful if jurisdiction seeks to reduce GHGs with fewer programs

Implementation Levels

Silver, Gold, or Platinum

Implementation Level	Silver	Gold	Platinum
Participation	Lowest	Mid-Range	Highest
Cost	Varies		
Potential co-benefits	Lowest	Mid-Range	Highest
Number of overall programs needed to achieve GHG reduction goals	Most	Mid-Range	Least
Certainty of GHG reductions	Lowest	Mid-Range	Highest

Emission Reduction Measure

Considerations

- Could this measure be effective within my community?
- Is this a measure that would be the best use of the jurisdiction's time and resources?
- Who will potentially benefit and who will potentially be burdened by the measure?
- Would the measure contribute to improving the quality of life in my community in other ways beyond reducing GHGs?



Improves
Public Health



Reduces
Household
Energy Costs



Promotes
Economic
Vitality



Fosters
Community
Leadership



Supports
Schools and
Youth



Increases
Community
Connectivity



Protects
Natural
Resources



Enhances
Neighborhood
Character

Reduction Measures

Energy Efficiency and Renewables

- State and regional
 - Renewables Portfolio Standard
 - CalGreen baseline
 - WRCOG HERO financing
- Local
 - SCE/Utility programs (Existing)
 - Traffic light programs
 - Shade trees
 - Cool pavements and cool roofs
 - Offsite solar photovoltaic or wind turbines
 - Beyond CalGreen baseline (Tier 1, Tier 2, Net zero)
 - Utility >33% renewable (Riverside, Banning only)
 - Residential and commercial conservation @ sale or alteration



Reduction Measures

Transportation and Land Use

- State and regional
 - Pavley I and II fuel efficiency standards
 - High Speed Rail
 - Transportation Uniform Mitigation Fee
 - Metrolink expansion
 - Express lanes
 - Congestion pricing
 - Goods movement
 - SANDBAG



Reduction Measures

Transportation and Land Use

- Local
 - E-Vehicle Plan + infrastructure (Existing)
 - Telecommuting (Existing)
 - Bike infrastructure and parking
 - End of trip facilities
 - Promotional TDM
 - Safe Routes to School
 - Transit service and frequency expansion
 - Density
 - Mixed-use
 - Design and site planning
 - Traffic calming
 - Pedestrian-only zones
 - Limiting parking for new development
 - Bus Rapid Transit
 - Vanpools
 - Voluntary TDM
 - Accelerated bike plan program
 - Subsidized transit



Reduction Measures

Waste Reduction

- State and regional
 - AB 341 75% waste diversion
 - SWCV Rule (DPM reductions for solid waste vehicles)
- Local
 - Decrease communitywide solid waste (Zero-waste plan)
 - Yard waste collection
 - Construction & demolition requirements
 - Waste reduction audits for large generators
 - Food scrap and paper diversion
 - Methane capture
 - Tiered rates



Reduction Measures

Water Conservation

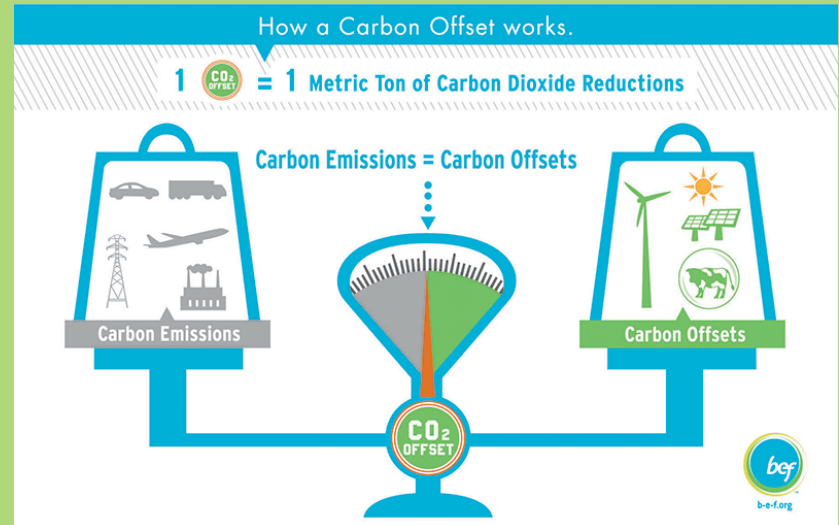
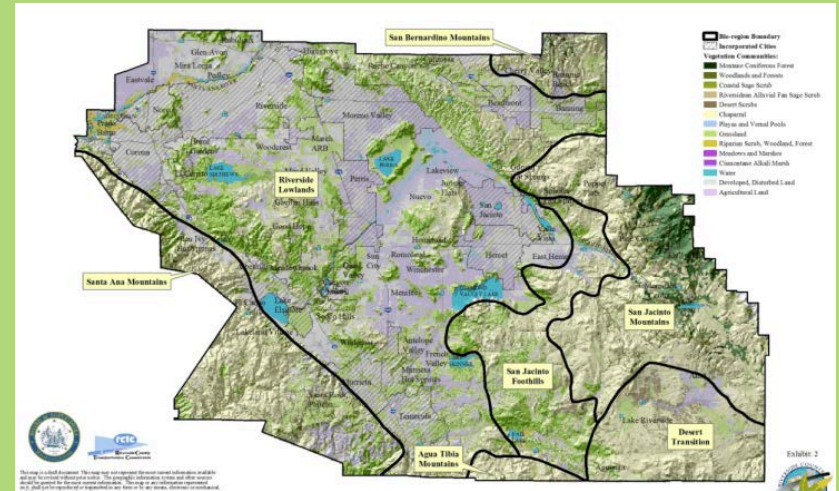
- State and regional
 - SB 7X 7 (20% reduction by 2020)
- Local
 - Water efficient landscaping (Existing)
 - Tiered rates



Reduction Measures

- State and Regional
 - Multi-Species Habitat Conservation Plan
- Local
 - Carbon offset program
 - Carbon offset purchase program

Other Programs



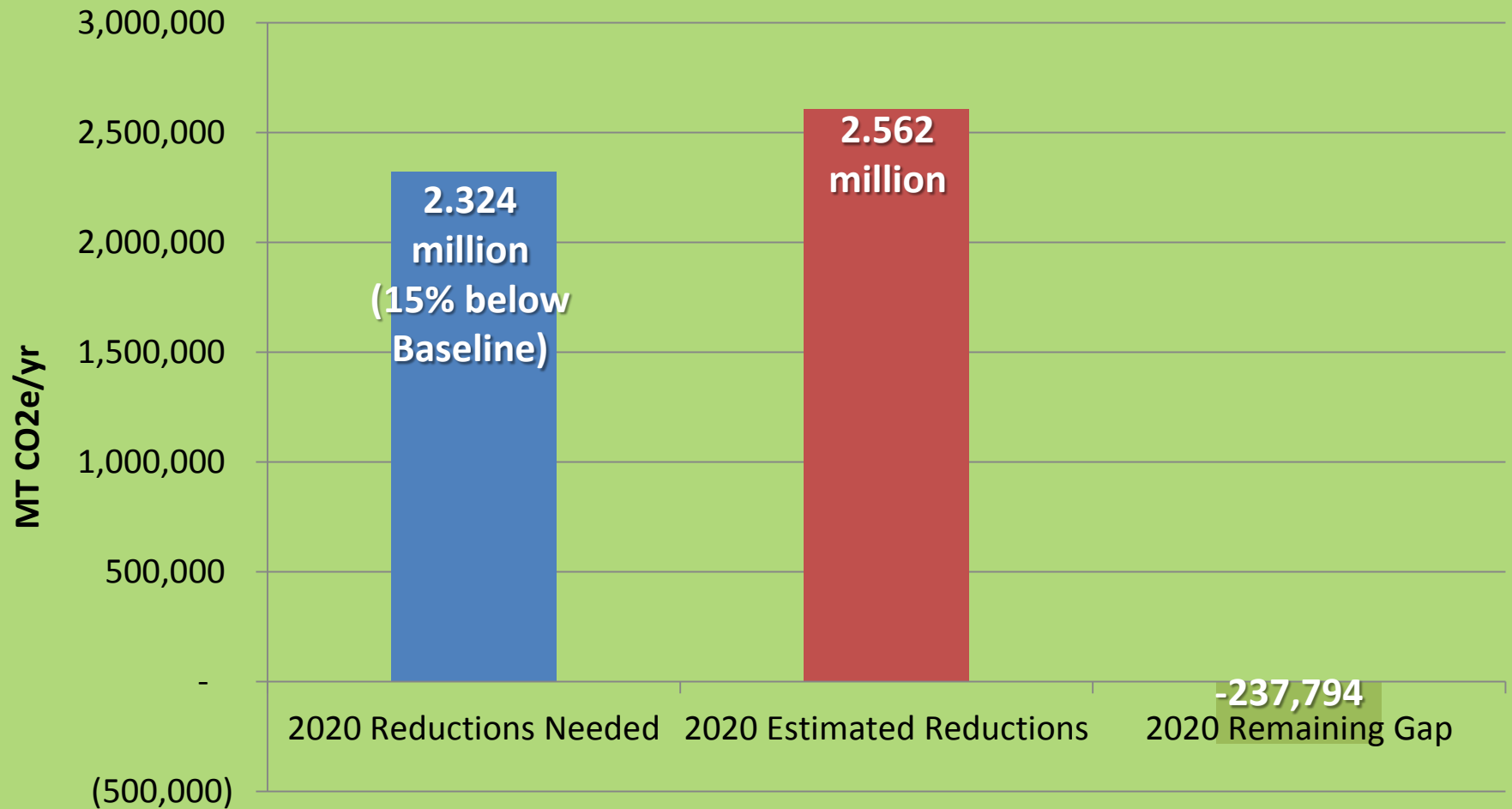
2020 Emissions Reductions

Quick Facts

- 12 inventory cities

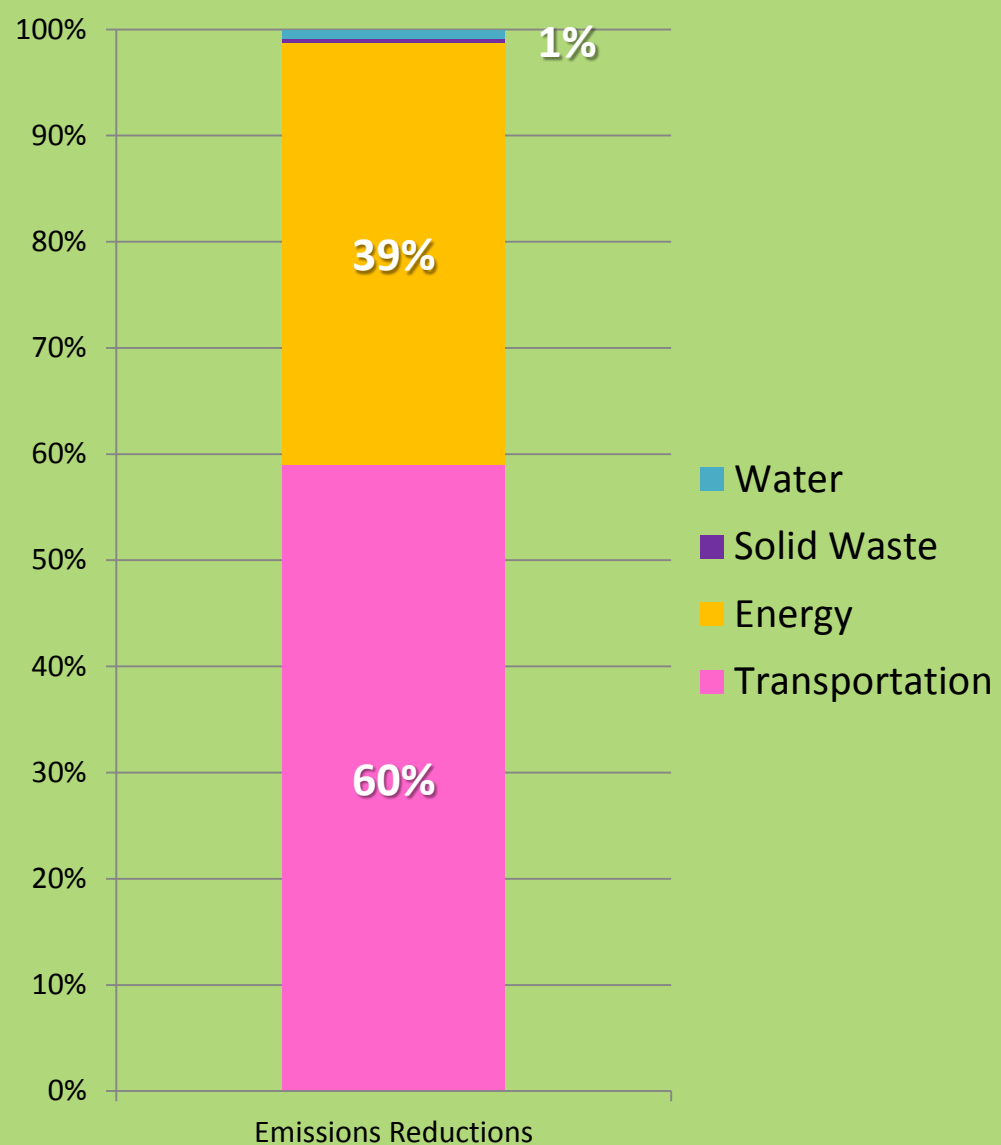
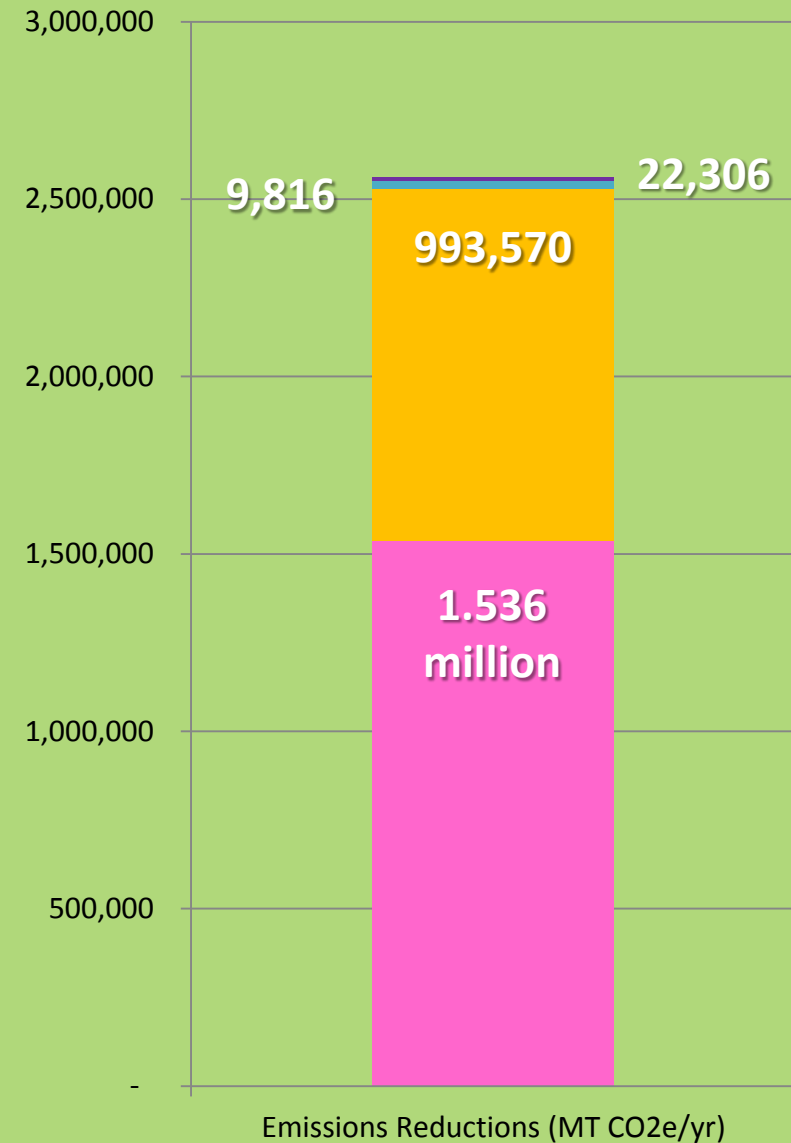
	~2010	2020
Subregional emissions (MTCO ₂ e/yr)	5,901,979	7,340,867
BAU % Increase from baseline	--	+24%
Recommended reduction target (below ~2010 baseline)	--	-15%
Target emissions level (MTCO ₂ e/yr)	--	5,016,682
Emissions reductions achieved (MTCO ₂ e/yr)	--	-2,561,979
Reductions achieved (below ~2010 baseline)	--	-19%

2020 Emissions Reductions

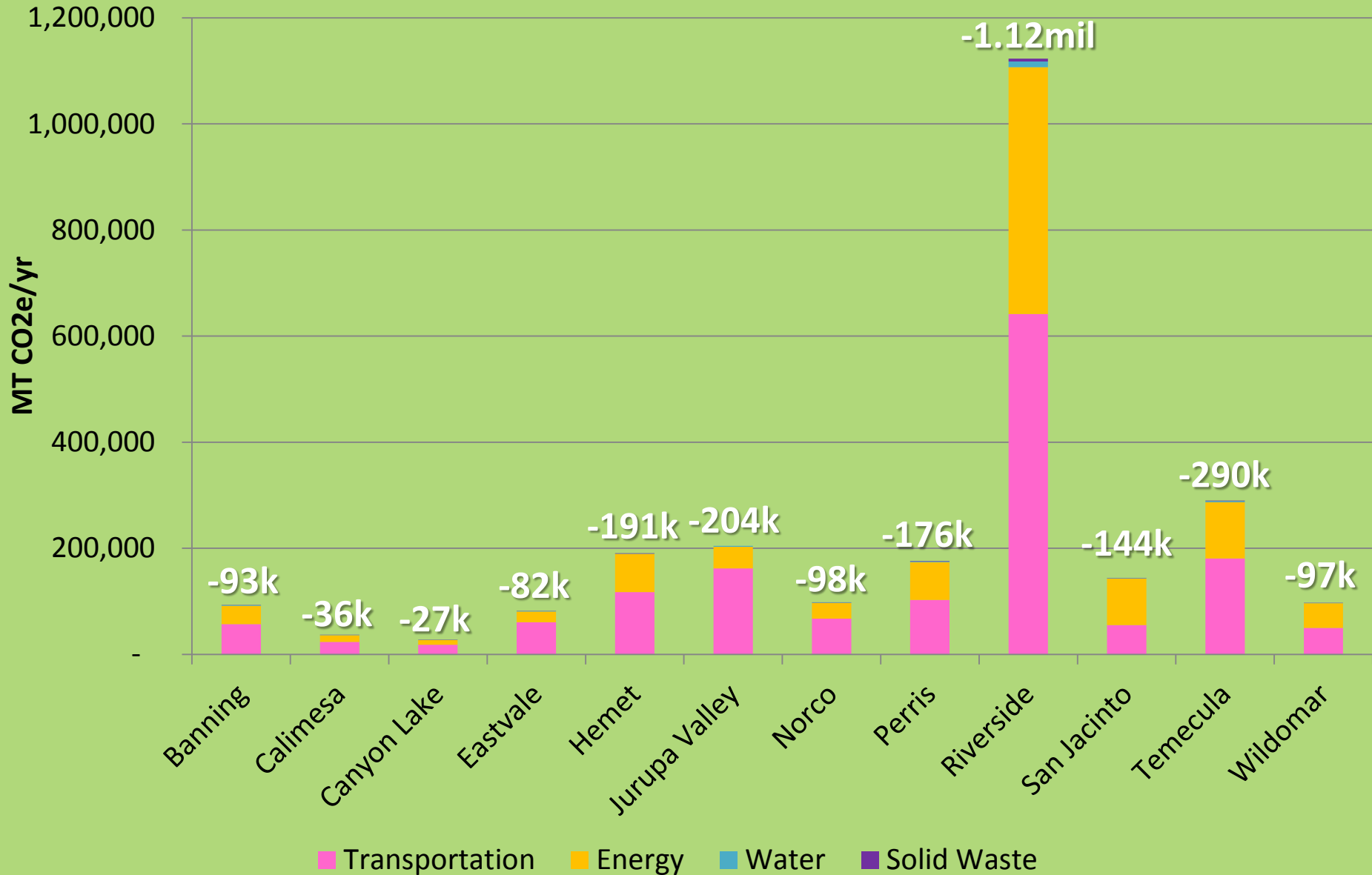


- Provides some wiggle-room in the event some measures aren't as effective as planned

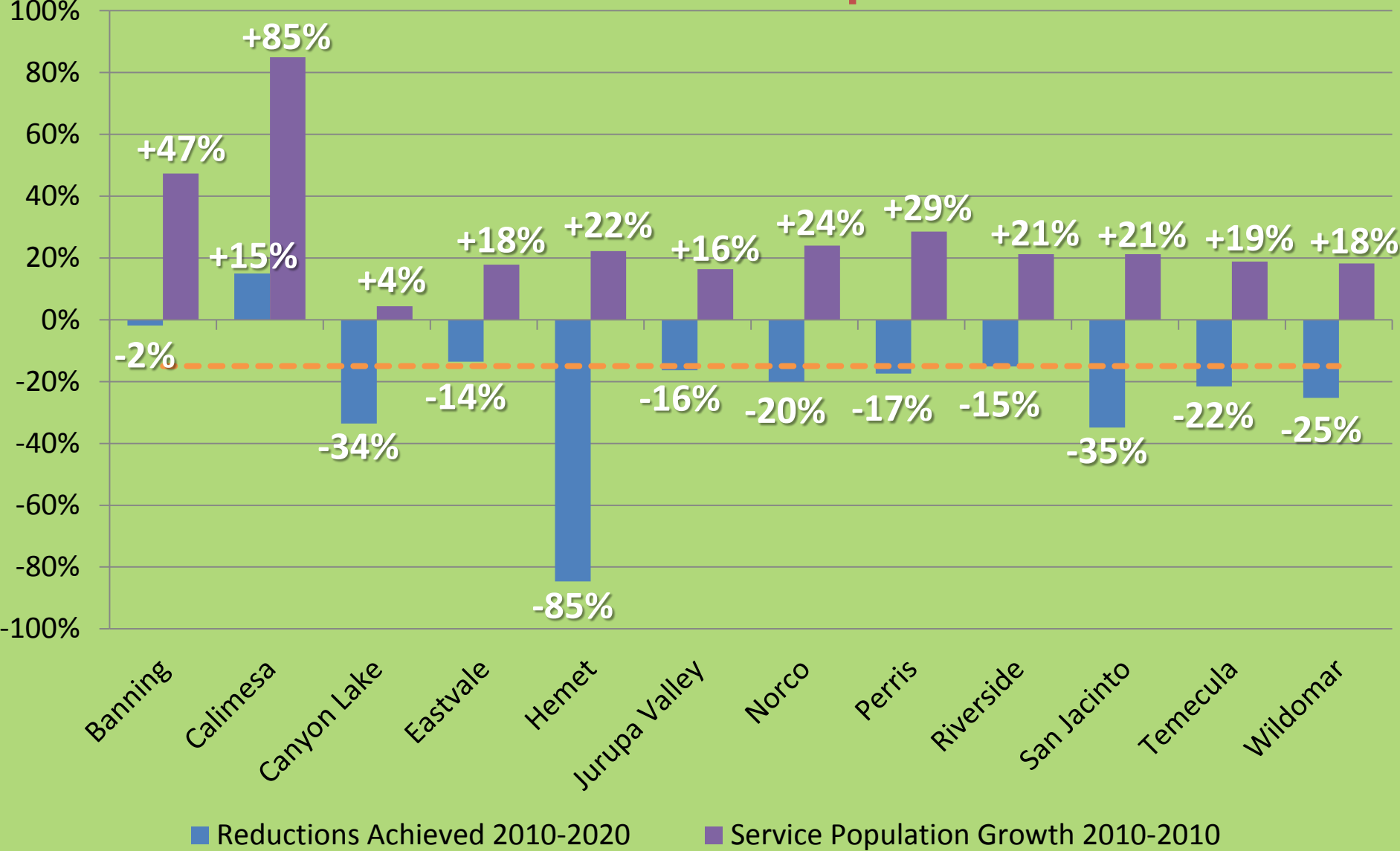
2020 Total Reductions Achieved



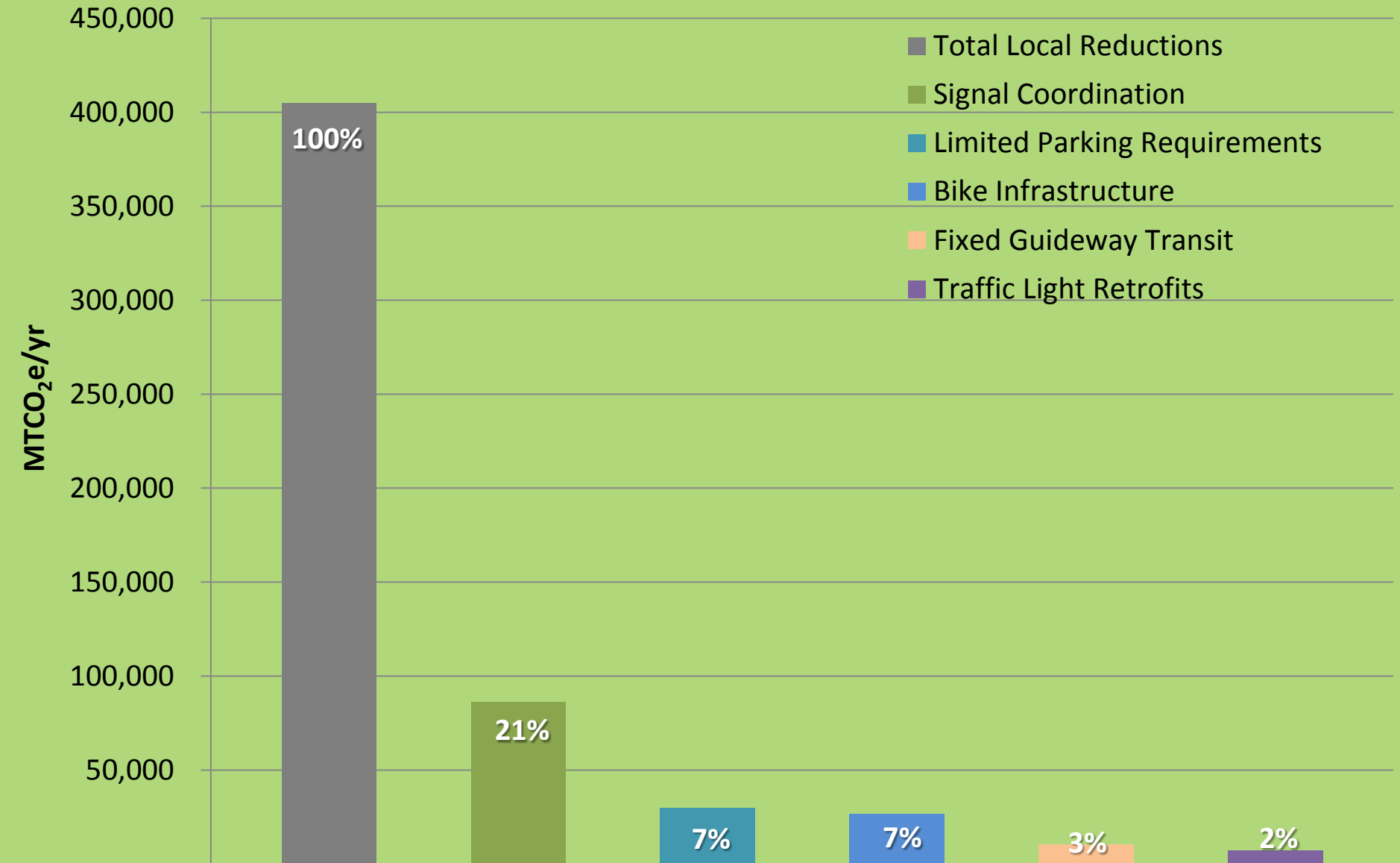
2020 Reductions Achieved by City



2010-2020 % Emissions Reductions and Service Population Growth



2020 Top 5 Local Measures



Local Reduction Measures

Most Popular (max 36.0)

- Bike parking (31)
- Water-efficient landscaping (30)
- Bike infrastructure (18)
- Traffic signal coordination (17)
- C&D waste reduction (17)
- End-of-trip travel facilities (15)
- Traffic light replacements (14)
- Shade trees (13)
- Increased density and mixed-use (13)



Climate Action Plan Sample Page



Platinum Level

Riverside, Temecula
-18,299 MT CO₂e/yr (2020)

Gold Level

Banning, Eastvale, Hemet,
Perris
-4,405 MT CO₂e/yr (2020)

Silver Level

Canyon Lake, Jurupa Valley,
Norco, Wildomar
-4,122 MT CO₂e/yr (2020)

Funding Sources

State of California, RCTC,
City Funds

Total Subregional GHG Reduction Potential

2020: -26,826 MT CO₂e/yr
(1% of total reductions)

2035: -34,592 MT CO₂e/yr
(1% of total reductions)

TRANSPORTATION

Bike Infrastructure Improvements

T-11 *Expand bicycle infrastructure within the City. Bicycle infrastructure includes both on-street and off-street facilities such as bicycle lanes and bicycle trails.*

Bicycling is a key element of an integrated and robust transportation network. One way to encourage the use of cycling is through the construction of dedicated bicycle facilities, which can increase the number of people bicycling. This measure calls for an increase in these bicycle facilities beyond what is already provided in cities. Planning and implementation of these improvements can occur through updates to General Plans, Specific Plans, Bicycle Master Plans, or through the project entitlement process.

Actions

Platinum Level

1. The City will expand existing bicycle facilities by 50%

Gold Level

1. The City will expand existing bicycle facilities by 25%

Silver Level

1. The City will expand existing bicycle facilities by 10%

Community Benefits

Beyond reducing emissions, this measure will also provide the following community benefits for residents and businesses in Western Riverside County.



Energy



Health



Economy

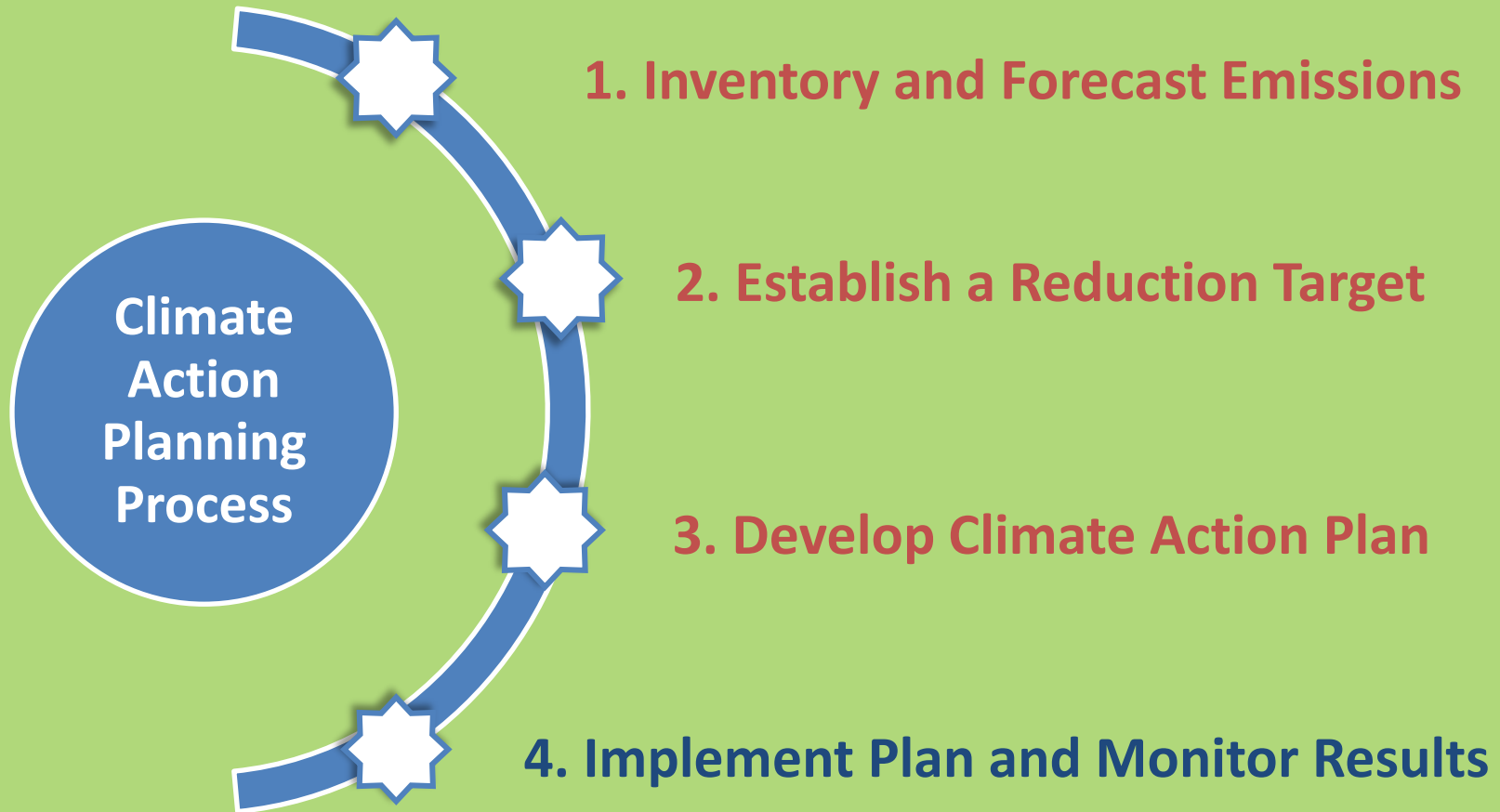


Resources



Mobility

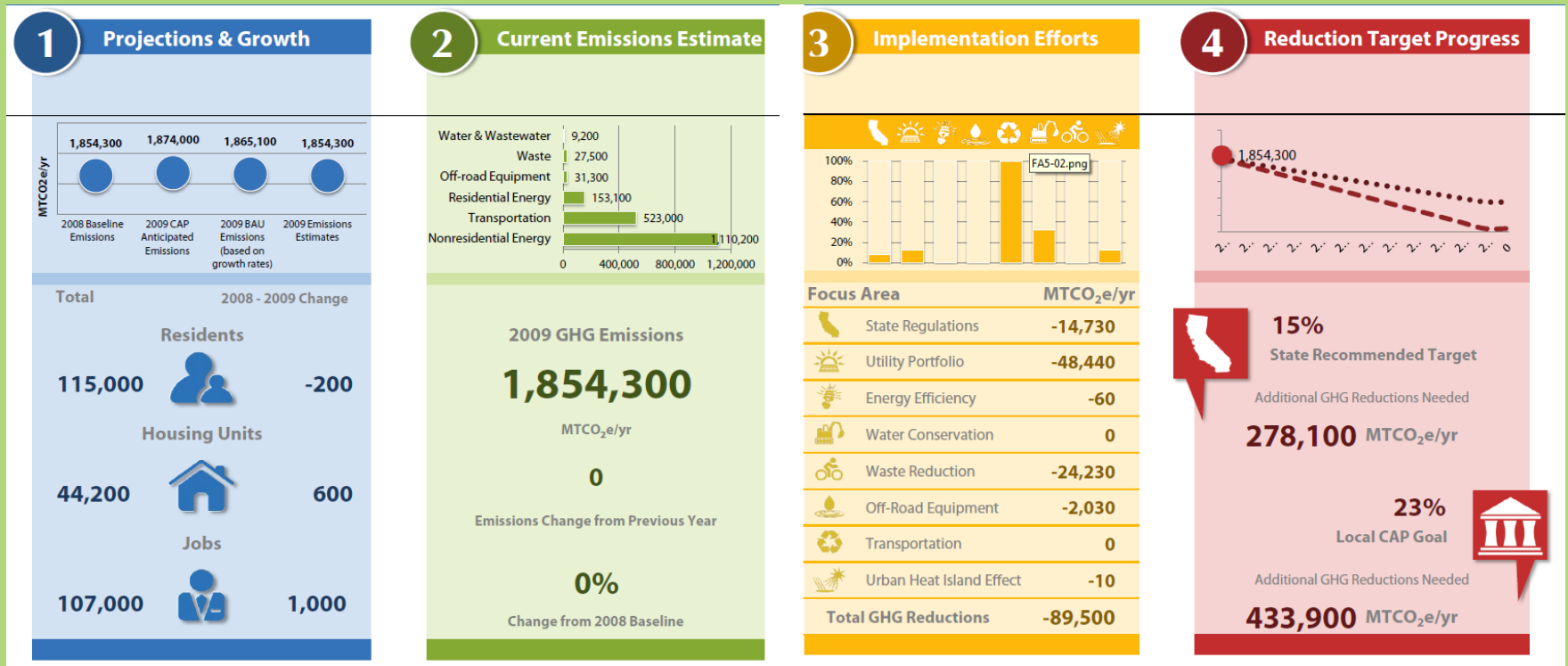
Subregional Climate Action Plan Process



Climate Action Plan

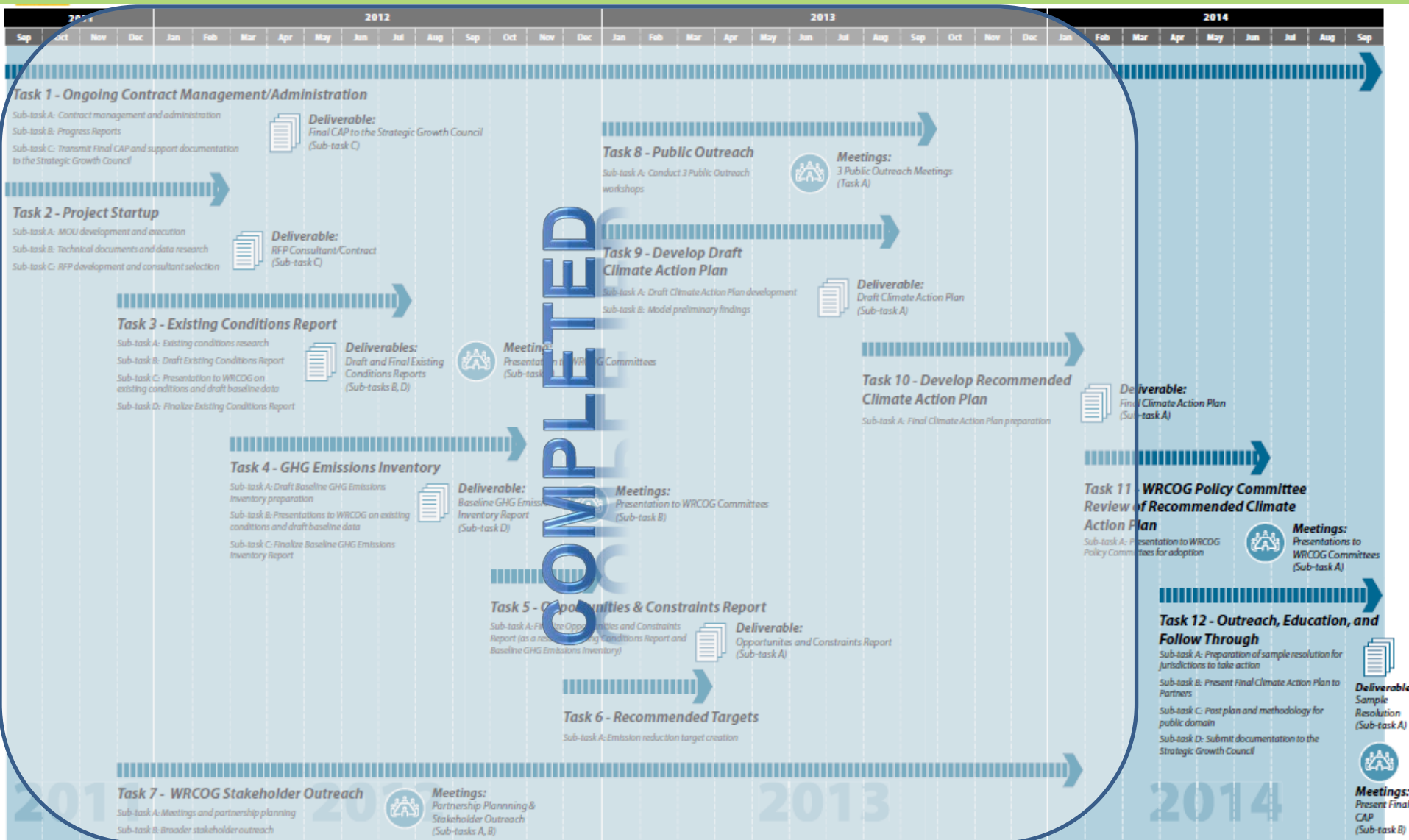
Implementation and Monitoring

- Ongoing monitoring of activity data and measure progress



- What should be local v. WRCOG roles in monitoring and implementation?

Schedule and Progress to Date



Community Outreach

- WRCOG Planning Directors' TAC serves as the main technical advisory committee
- CAP Stakeholders - participants from external agencies
- Broader community input sought through MindMixer site
- On-going community meetings and events
- Project to be completed in Summer 2014



For questions contact...



Alexa Washburn
washburn@wrcog.cog.ca.us
(949) 394-7996

Jennifer Ward
ward@wrcog.cog.ca.us
(951) 955-0186